

PRODUCT INFORMATION PACKET



Model No: C184C17DB19A

Catalog No: 131534.00

3HP..1740RPM.184.DP.115/230V.1PH.60HZ.CONT.NOT.40C.1.15SF.RIGID.GENERAL
PURPOSE.C184C17DB19A

Air Compressor



Regal and Leeson are trademarks of Regal Beloit Corporation or one of its affiliated companies.

©2018 Regal Beloit Corporation, All Rights Reserved. MC017097E



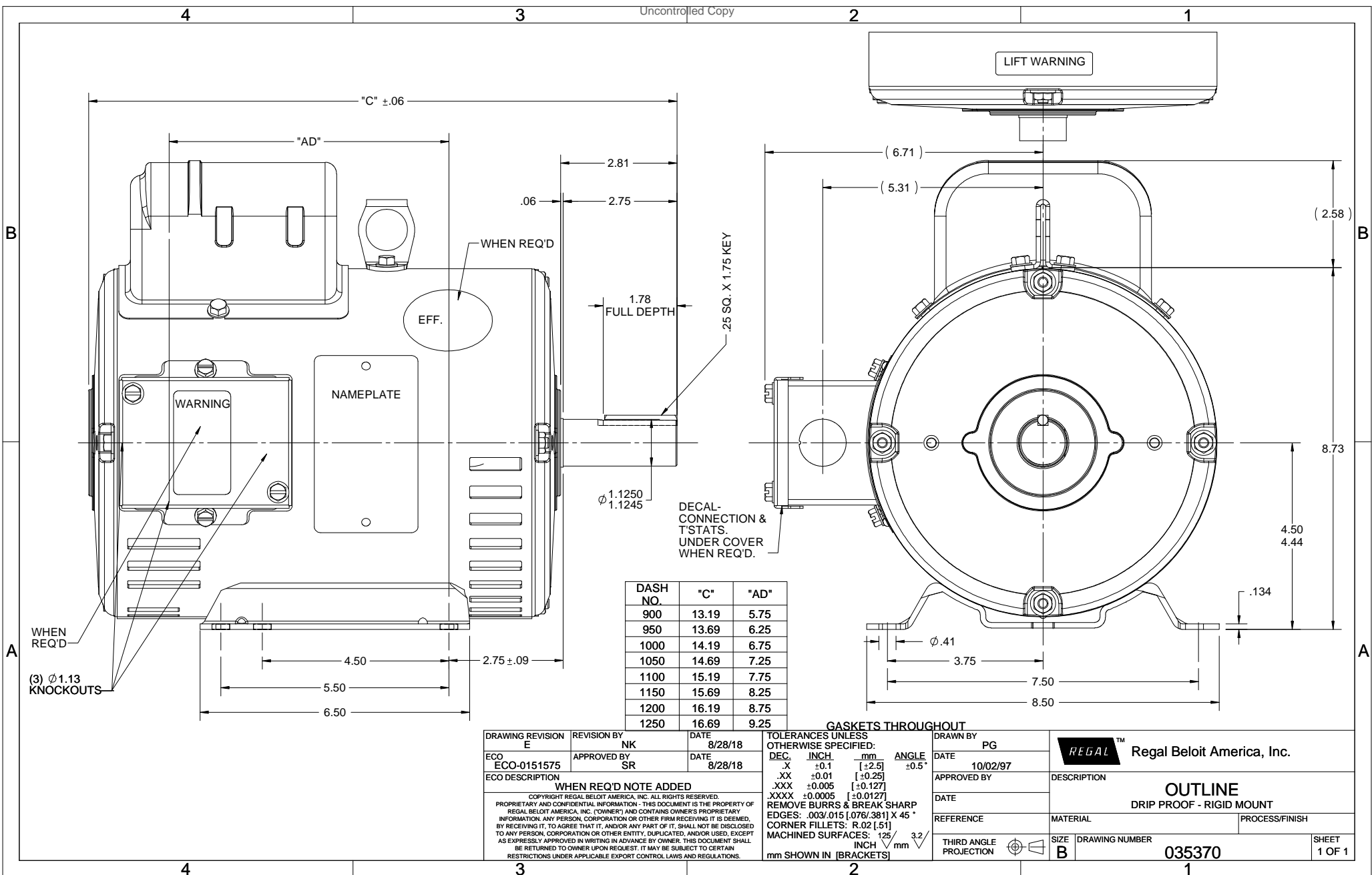


Nameplate Specifications

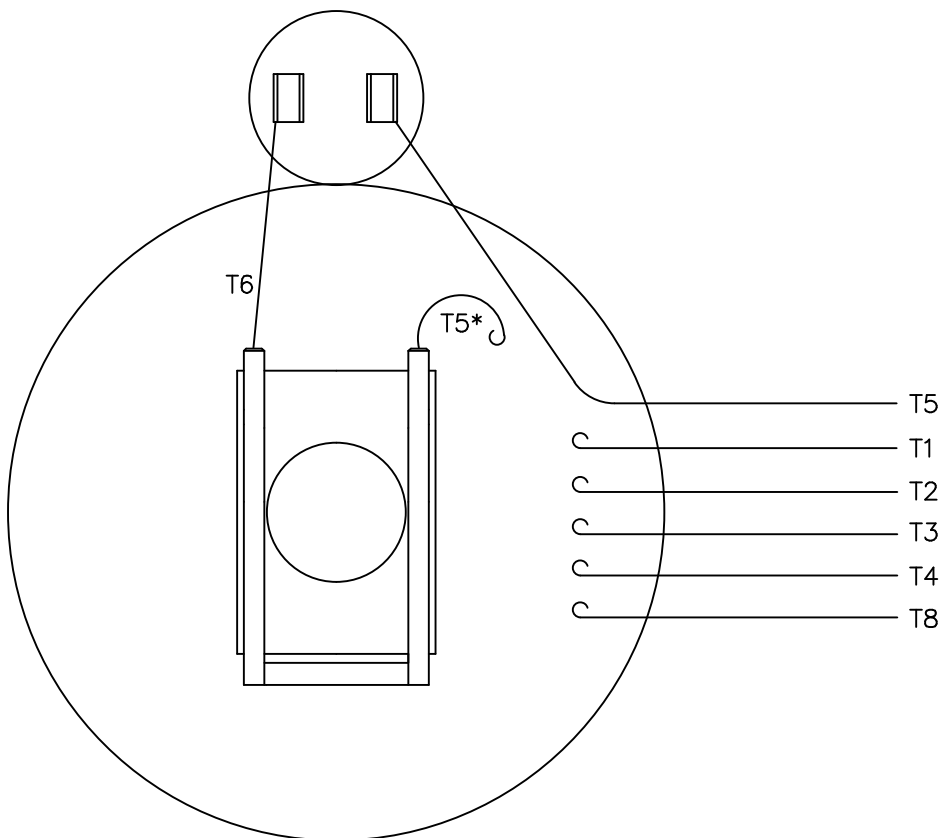
Output HP	3 Hp	Output KW	2.2 kW
Frequency	60 Hz	Voltage	115/230 V
Current	33.8/16.9 A	Speed	1740 rpm
Service Factor	1.15	Phase	1
Efficiency	75.5 %	Duty	Continuous
Insulation Class	F	Design Code	L
KVA Code	J	Frame	184T
Enclosure	Drip Proof	Overload Protector	No
Ambient Temperature	40 °C	Drive End Bearing Size	6206
Opp Drive End Bearing Size	6205	UL	Recognized
CSA	Y	CE	N
IP Code	22		

Technical Specifications

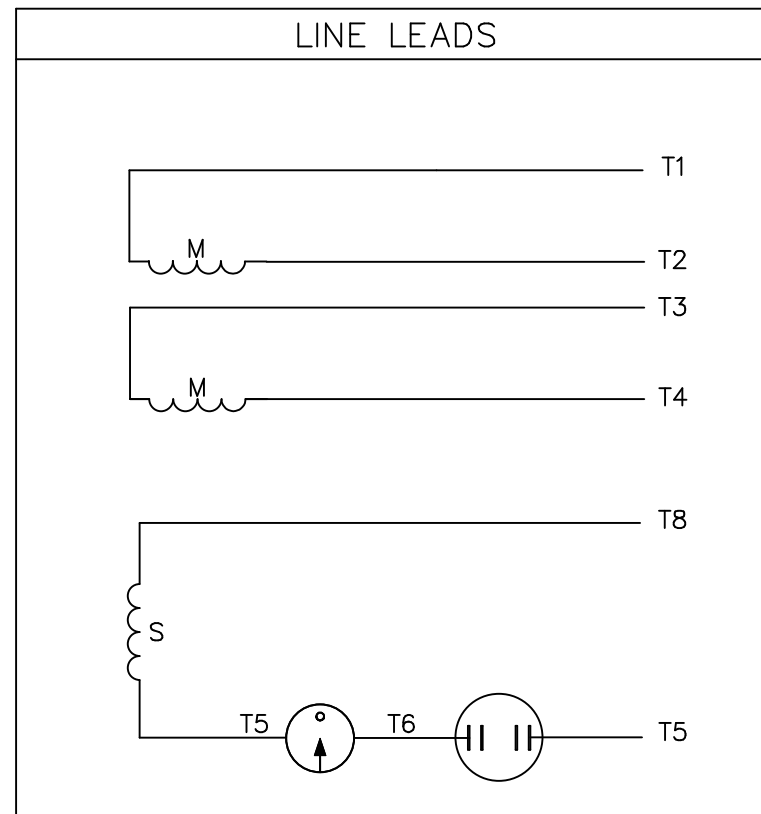
Electrical Type	Capacitor Start Induction Run	Starting Method	Across The Line
Poles	4	Rotation	Selective Counterclockwise
Mounting	Rigid base	Motor Orientation	HORIZONTAL
Drive End Bearing	BALL	Opp Drive End Bearing	BALL
Frame Material	Rolled Steel	Shaft Type	T
Overall Length	14.19 in	Frame Length	10.00 in
Shaft Diameter	1.125 in	Shaft Extension	2.75 in
Assembly/Box Mounting	F1 ONLY		
Outline Drawing	035370-1000	Connection Diagram	005062.01



VIEW FROM OUTSIDE OF MOTOR AT SWITCH END.



* THIS LEAD MAY BE WHITE



	ROTATION FACING LEAD END	L1	L2	JOIN
HIGH VOLT	C.C.W.	T1	T4 T5	T2, T3 T8
	C.W.	T1	T4 T8	T2, T3 T5
LOW VOLT	C.C.W.	T1, T3 T8	T2, T4 T5	---
	C.W.	T1, T3 T5	T2, T4 T8	---

		TOLERANCES UNLESS SPECIFIED			
		DEC.	INCHES		
		.X	±.1		
12	ALTERNATE T5 LEAD MARKING WAS RED	RLW	8/6/02	.XX	±.01
11	ADDED ALTERNATE T5 LEAD MARKING	RLW	5/31/02	KH	.XXX ±.005
10	UPDATED TO CURRENT STANDARDS	DBT	06/09/97		.XXXX ±.0005
NO.	REVISION	BY & DATE	CHK	ANG	±1/2"

		ELECTRIC MOTORS GEARMOTORS AND DRIVES		DRAWN JRW 12/05/74 CHK APPD T.E.M.	
		TITLE EXT. WIRING DIAGRAM TYPE "C" W/O PROTECTOR		SCALE 1=1 REF A-005061	
MAT'L. DECAL - 004012		FINISH		FMF PREV	
THIS DRAWING IN DESIGN AND DETAIL IS OUR PROPERTY AND MUST NOT BE USED EXCEPT IN CONNECTION WITH OUR WORK ALL RIGHTS OF DESIGN AND INVENTION ARE RESERVED THIS IS AN ELECTRONICALLY GENERATED DOCUMENT - DO NOT SCALE THIS PRINT		RFP DIST NLV	CAD FILE 00506201	SIZE A DRAWING NO. 005062-01	REV. 12



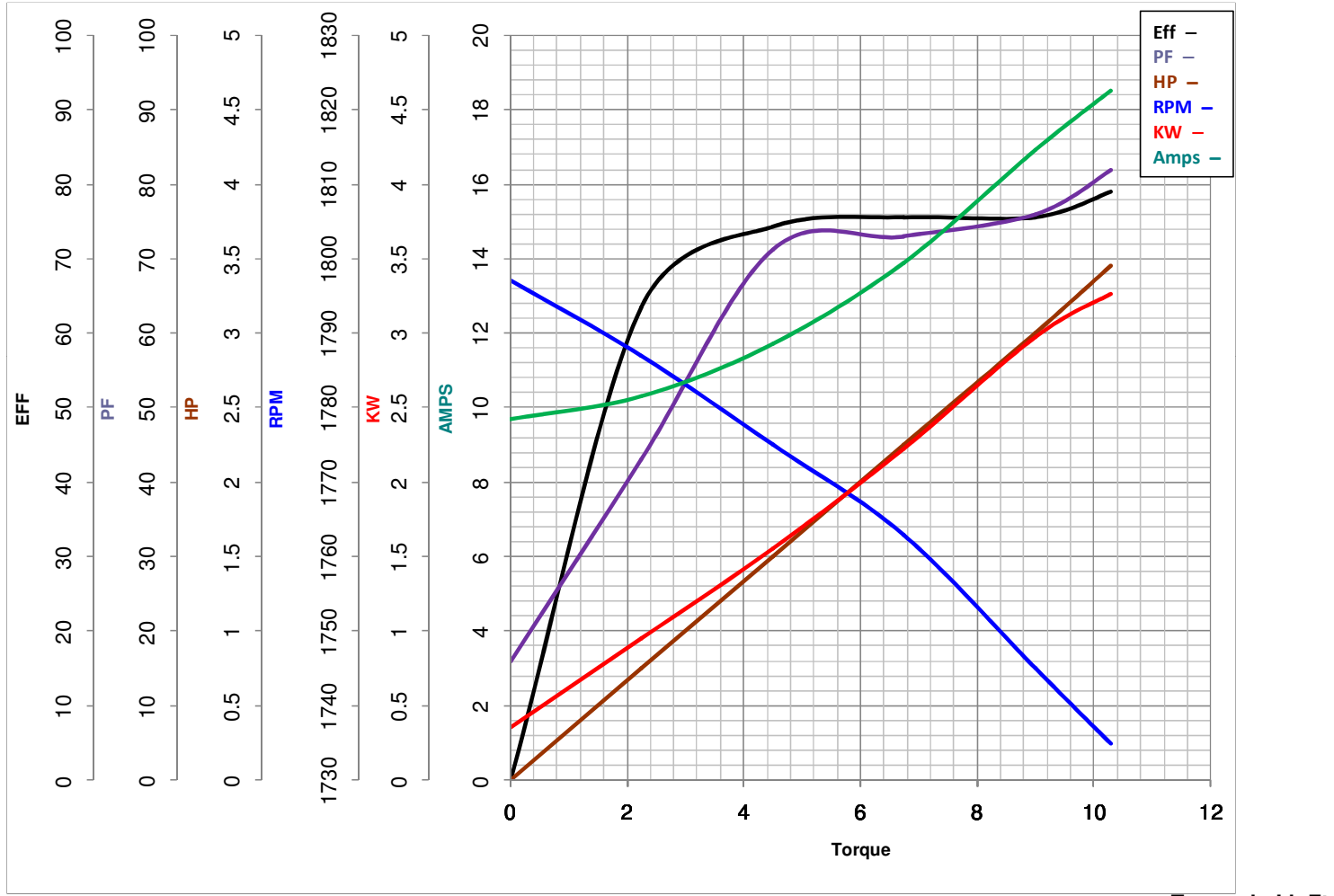
LEESON ELECTRIC CORPORATION
 TYPICAL PERFORMANCE CURVE for AC MOTOR

Model No 131534.00

Curve at 230 Volts HP 3.00 PHASE 1
60 HZ
3 HP VOLTS 115/230

Catalog No 131534.00

HZ 60 RPM 1740



Torque in Lb.Ft

FL TORQUE	<u>9</u>	Lb.Ft	FL AMPS	<u>33.8/16.9</u>
BD TORQUE	<u>18.4</u>	Lb.Ft	PU TORQUE	<u>17.5</u> Lb.Ft
LR TORQUE	<u>24.6</u>	Lb.Ft	LR AMPS	<u>90.6</u>
WINDING	C8428-3		Date	<u>3/27/2018</u>