

Hub City™ IndustriaLine™ Bearing Units

Series 100, 200 - Ratings

SHAFT SIZE (INCHES)	BASIC DYNAMIC RATING	BASIC STATIC RATING	BEARING RADIAL LOAD CAPACITY IN POUNDS BASED ON L-10 LIFE OF 500 HOURS AND STEADY LOAD CONDITIONS (2500 HOURS AVERAGE LIFE)							
			BEARING SPEED - REVOLUTIONS PER MINUTE (RPM)							
			100	500	1,000	1,500	2,000	2,500	3,000	3,500
1/2, 5/8	2,110	1,120	1,460	860	680	590	540	500	470	450
3/4	2,610	1,440	1,810	1,060	840	740	670	620	580	560
7/8, 15/16, 1	2,800	1,650	1,950	1,140	900	790	720	670	630	600
1-1/8, 1-3/16, 1-1/4S	4,380	2,570	3,040	1,780	1,410	1,230	1,120	1,040	980	930
1-1/4, 1-3/8, 1-7/16	5,780	3,490	4,010	2,350	1,860	1,630	1,480	1,360	1,290	—
1-1/2	7,340	4,470	5,100	2,980	2,370	2,070	1,880	1,750	1,650	—
1-5/8, 1-11/16, 1-3/4	7,900	5,140	5,480	3,210	2,540	2,220	2,020	1,880	—	—
1-15/16, 2S	7,890	5,220	5,480	3,200	2,540	2,220	2,020	1,870	—	—
2, 2-3/16	9,750	6,600	6,770	3,960	3,140	2,740	2,490	—	—	—
2-1/4, 2-7/16	11,790	8,150	8,190	4,790	3,800	3,320	3,020	—	—	—
2-15/16	14,840	11,220	10,300	6,020	4,780	4,170	—	—	—	—

Maximum Recommended Speeds:

1-7/16 and smaller	-	3,500 R.P.M.
1-1/2 – 1-3/4	-	3,000 R.P.M.
1-7/8 – 2-7/16	-	2,500 R.P.M.
2-15/16	-	1,800 R.P.M.

For ultimate life, snug fit or light press on shaft should be used.
Recommended operating temperature range: -25° to +225°F.

For Applications not covered in the table above, consult the factory.

TO MODIFY THE ABOVE RATINGS FOR OTHER L-10 LIFE REQUIREMENTS OR FOR SHOCK LOADS MULTIPLY THE ABOVE RATINGS BY THE FACTOR FROM THIS CHART														
LOAD CONDITIONS	MODIFICATION FACTORS FOR L-10 SERVICE LIFE AND LOAD CONDITIONS:													
	L-10 LIFE (HOURS)													
	500	700	1,000	1,500	2,000	3,000	4,000	5,000	7,000	10,000	15,000	20,000	30,000	50,000
Steady Load	1.00	.894	.794	.694	.630	.550	.500	.464	.415	.368	.322	.292	.255	.215
Light Shock	.90	.804	.715	.624	.567	.495	.450	.418	.373	.331	.290	.263	.230	.194
Moderate Shock	.70	.626	.556	.485	.441	.385	.350	.325	.290	.258	.225	.205	.179	.151

Dimensions shown are for reference only.

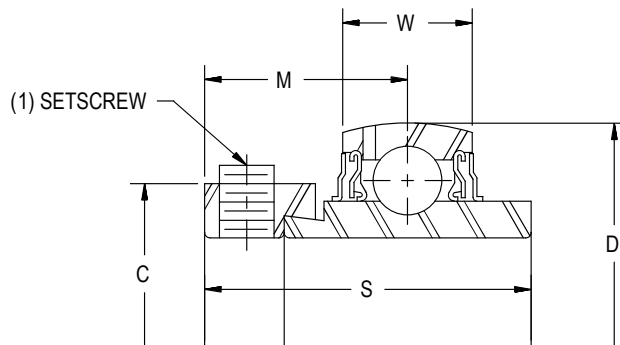
Hub City™ IndustriaLine™ Bearing Units

Bearing Inserts

Series YW220, YW250

YW220 Bearing Inserts

- Spherical outside diameter
- Relube type. Prelubricated at factory
- Molded glass fiber reinforced polyamide retainer
- Nitrile rubber seals with steel flingers
- Metal flingers
- Eccentric locking collar
- Wide inner race



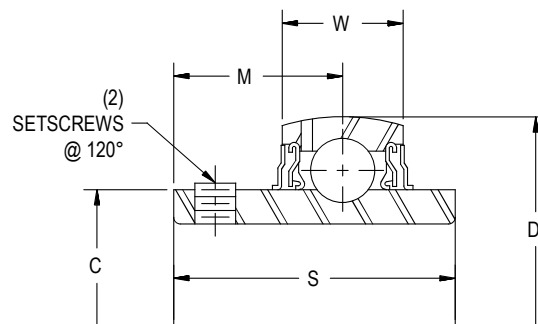
SHAFT SIZE	DIMENSIONS						WT. LBS.
	C	D	M	S	W	SETSCREW	
1	1.500	2.0472	1.062	1.750	0.591	1/4-28 UNF	0.6
1-3/16	1.750	2.4409	1.188	1.906	0.709	5/16-24 UNF	0.8
1-1/4, 1-3/8, 1-7/16	2.188	2.8346	1.281	2.016	0.748	3/8-24 UNF	1.4
1-1/2	2.375	3.1496	1.375	2.219	0.866	3/8-24 UNF	1.7
1-11/16, 1-3/4	2.500	3.3465	1.375	2.219	0.906	3/8-24 UNF	1.9
1-15/16	2.750	3.5433	1.500	2.469	1.063	3/8-24 UNF	2.1
2, 2-3/16	3.000	3.9370	1.719	2.812	0.984	7/16-20 UNF	3.1
2-7/16	3.375	4.3307	1.844	3.062	1.024	7/16-20 UNF	4.4

Part Numbers are specified by "YW220" and Bore Size. Example YW220 x 1-1/4.

Used in PB220W, PB221W, PB220HW, PB221HW pillow blocks; FB220HW, FB230HW flange blocks; and TU220W take-up units.

YW250 Bearing Inserts

- Spherical outside diameter
- Relube type. Prelubricated at factory
- Molded glass fiber reinforced polyamide retainer
- Nitrile rubber seals with steel flingers
- Metal flingers
- Setscrew locking
- Wide inner race



SHAFT SIZE	DIMENSIONS						WT. LBS.
	C	D	M	S	W	SETSCREW	
5/8	0.969	1.5748	0.625	1.031	0.512	1/4-28 UNF	0.2
3/4	1.188	1.8504	0.719	1.219	0.590	1/4-28 UNF	0.3
1	1.375	2.0472	0.812	1.375	0.590	1/4-28 UNF	0.5
1-3/16, 1-1/4S	1.594	2.4409	0.875	1.500	0.708	1/4-28 UNF	0.7
1-1/4, 1-7/16	1.859	2.8346	1.000	1.688	0.748	5/16-24 UNF	1.0
1-1/2	2.062	3.1496	1.187	1.937	0.866	5/16-24 UNF	1.3
1-3/4	2.297	3.3465	1.187	1.937	0.866	5/16-24 UNF	1.6
1-15/16	2.469	3.5433	1.281	2.031	0.906	3/8-24 UNF	1.6
2	2.719	3.9370	1.312	2.187	0.984	3/8-24 UNF	2.5
2-7/16	2.984	4.3307	1.562	2.562	1.063	3/8-24 UNF	3.8

Part Numbers are specified by "YW250" and Bore Size. Example YW250 x 1-1/4.

Used in PB250W, PB251W, PB250HW, PB251HW, TPB250W pillow blocks; FB250HW, FB260HW flange blocks; and TU250W take-up units.

DIMENSIONS SHOWN ARE FOR REFERENCE ONLY.

For Lubrication and Mounting Instructions, Refer to section M

DOWNLOAD AVAILABLE CAD MODELS AT: WWW.HUBCITYINC.COM

Certified prints are available upon request

CALL: (605) 225-0360 • FAX: (605) 225-0567