

# Hub City™ Worm Gear Drives

## Single Reduction

### PowerCubeX® Worm Speed Reducer Catalog Ratings

#### Series 180

SERIES	INPUT RPM	RATIO	OUTPUT RPM	CONVENTIONAL OIL					PAO SYNTHETIC OIL			PAG SYNTHETIC OIL		
				MECH. INPUT HP	EFF. %	MECH. OUTPUT TORQUE	THERMAL INPUT HP	THERMAL OUTPUT TORQUE	INPUT HP	EFF. %	OUTPUT TORQUE	INPUT HP	EFF. %	OUTPUT TORQUE
180	2500	5	500	3.00	86.8	328	2.11	231	3.00	92.0	348	3.00	94.8	358
		7.5	333	2.40	85.6	389	1.61	261	2.40	90.8	413	2.40	93.6	425
		10	250	1.96	84.7	418	1.42	304	1.96	89.8	443	1.96	92.6	457
		15	167	1.48	81.5	455	1.00	307	1.48	86.4	483	1.48	89.1	498
		20	125	1.16	79.8	465	1.04	416	1.16	84.6	493	1.16	87.2	509
		25	100	0.95	78.0	466	0.80	397	0.95	82.7	494	0.95	85.2	509
		30	83.3	0.84	74.0	471	0.68	383	0.84	78.4	499	0.84	80.8	515
		40	62.5	0.65	71.1	465	THERMAL EQUALS MECHANICAL	0.65	75.4	493	0.65	77.8	509	
		50	50.0	0.52	68.2	449		0.52	72.4	476	0.52	74.6	491	
		60	41.7	0.43	65.0	427		0.43	68.9	452	0.43	71.0	466	
	80	31.3	0.28	60.8	348	0.28		64.4	369	0.28	66.4	380		
	100	25.0	0.191	56.7	272	0.191		60.1	289	0.191	61.9	298		
	1750	5	350	2.57	85.9	397	2.04	315	2.57	91.1	421	2.57	93.9	434
		7.5	233	2.05	84.7	468	1.53	349	2.05	89.7	496	2.05	92.5	511
		10	175	1.63	83.6	491	1.34	404	1.63	88.6	520	1.63	91.4	536
		15	117	1.25	80.0	541	1.00	446	1.25	84.8	573	1.25	87.4	591
		20	87.5	1.00	78.0	541	0.90	510	1.00	82.7	574	1.00	85.3	591
		25	70.0	0.78	76.0	536	0.75	520	0.78	80.6	569	0.78	83.1	586
		30	58.3	0.75	71.5	557	0.64	495	0.75	75.8	590	0.75	78.1	609
		40	43.8	0.55	68.5	540	THERMAL EQUALS MECHANICAL	0.55	72.6	572	0.55	74.8	590	
		50	35.0	0.44	65.4	516		0.44	69.3	547	0.44	71.4	564	
		60	29.2	0.37	61.9	490		0.37	65.6	520	0.37	67.6	536	
	80	21.9	0.25	57.5	395	0.25		61.0	419	0.25	62.9	432		
	100	17.5	0.160	53.3	308	0.160		56.5	326	0.160	58.2	336		
	1170	5	234	2.02	84.9	461	1.84	419	2.02	90.0	489	2.02	92.8	504
		7.5	156	1.60	83.5	540	1.40	472	1.60	88.5	572	1.60	91.2	590
		10	117	1.25	82.3	555	THERMAL EQUALS MECHANICAL	1.25	87.2	589	1.25	89.9	607	
		15	78.0	1.00	78.1	617		1.00	82.8	654	1.00	85.3	675	
		20	58.5	0.75	76.0	608		0.75	80.6	644	0.75	83.1	664	
		25	46.8	0.60	73.8	598		0.60	78.2	634	0.60	80.6	654	
		30	39.0	0.57	68.7	634		0.57	72.8	672	0.57	75.0	693	
		40	29.3	0.43	65.5	606	0.43	69.4	642	0.43	71.5	662		
		50	23.4	0.34	62.2	575	0.34	65.9	610	0.34	68.0	629		
		60	19.5	0.29	58.5	546	0.29	62.0	579	0.29	63.9	597		
	80	14.6	0.187	54.0	436	0.187	57.3	462	0.187	59.0	476			
	100	11.7	0.126	49.7	338	0.126	52.7	358	0.126	54.3	369			
	100	5	20.0	0.244	79.1	607	THERMAL EQUALS MECHANICAL	0.244	83.8	644	0.244	86.4	664	
		7.5	13.3	0.194	76.6	702		0.194	81.2	744	0.194	83.8	767	
		10	10.0	0.147	75.2	697		0.147	79.7	739	0.147	82.2	762	
		15	6.7	0.122	68.3	788		0.122	72.4	836	0.122	74.7	861	
		20	5.0	0.091	65.8	754		0.091	69.8	799	0.091	71.9	824	
		25	4.0	0.074	63.0	731		0.074	66.8	775	0.074	68.8	799	
		30	3.3	0.077	55.3	806		0.077	58.7	854	0.077	60.5	881	
		40	2.5	0.057	52.0	748		0.057	55.2	793	0.057	56.9	818	
		50	2.0	0.046	48.5	702		0.046	51.4	744	0.046	53.0	767	
60		1.7	0.040	44.4	666	0.040		47.1	706	0.040	48.5	728		
80	1.3	0.026	40.2	521	0.026	42.7	553	0.026	44.0	570				
100	1.0	0.018	36.1	402	0.018	38.3	426	0.018	39.5	439				

ADDITIONAL RATINGS FOR OTHER INPUT SPEEDS ARE AVAILABLE AT [WWW.REGALBELOIT.COM](http://WWW.REGALBELOIT.COM)

#### OVERHUNG LOAD AND THRUST LOAD INFORMATION

OVERHUNG LOAD - LOW SPEED SHAFT.

MODELS 181 AND 184 550 LBS. AT CENTER POINT OF SHAFT EXTENSION. MODELS 182 AND 185 NOT APPLICABLE.

THRUST± UP OR DOWN 600 LBS.

±OHL AND THRUST VALUES SHOWN ARE INDEPENDENT FUNCTIONS AND CANNOT BE APPLIED SIMULTANEOUSLY.

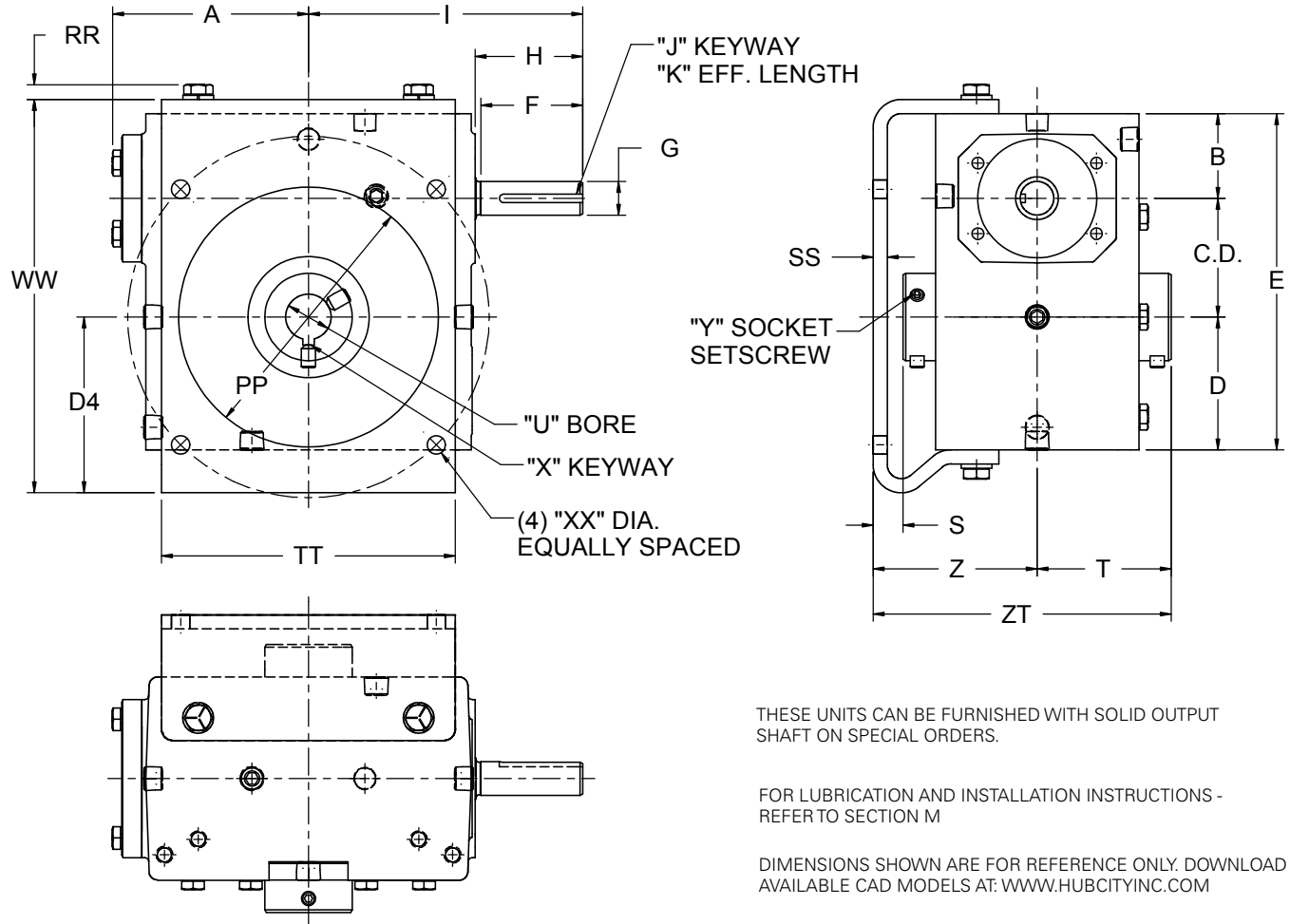
REFER APPLICATIONS WITH COMBINED OHL AND THRUST TO REGAL CUSTOMER SERVICE DEPARTMENT.

OUTPUT TORQUE VALUES SHOWN ARE INCH-POUNDS (IN-LB).

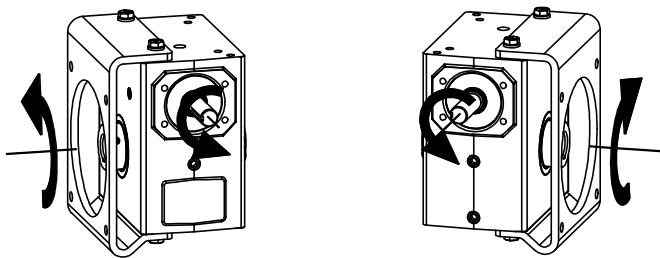
# Hub City™ Worm Gear Drives

## Single Reduction Models

133, 183, 213, 243, 263, 323, 383 (STEEL BRACKET)



### Standard Styles Available



STYLE "L"

STYLE "R"

CONSULT FACTORY FOR VERTICAL SHAFT LUBRICATION RECOMMENDATIONS.  
INPUT SHAFT CAN BE ROTATED IN EITHER DIRECTION.

# Hub City™ Worm Gear Drives

## Single Reduction Models

133, 183, 213, 243, 263, 323, 383 (STEEL BRACKET)

MODEL	C.D.	A	B	D	E	F	G	H	I	J	K
133	1.334	2.61	1.186	1.562	4.082	1.67	.500/.4985	1.76	3.82	1/8 X 1/16 P&W	1.44
183	1.751	3.23	1.374	1.875	5.000	N/A	.625/.6235	1.76	4.44	3/16 X 3/32 P&W	1.50
213	2.064	3.61	1.500	2.437	6.000	N/A	.625/.6235	1.76	4.82	3/16 X 3/32 P&W	1.50
243 *	2.376	3.77	2.061	2.500	6.937	2.38	.750/.7485	2.38	5.51	3/16 X 3/32 P&W	1.75
263	2.626	4.33	1.874	2.938	7.438	2.36	.750/.7485	2.38	6.07	3/16 X 3/32 P&W	1.75
323	3.251	5.28	2.124	3.250	8.625	N/A	.875/.8735	2.38	6.75	3/16 X 3/32 P&W	1.75
383	3.751	4.90	2.374	3.937	10.062	2.20	1.000/.999	2.48	7.38	1/4 X 1/8 P&W	1.91

\* Model 243 also available with cast F-flange as either an add-on kit (see page B-103) or as a special assembly (consult factory).

MODEL	D4	PP	RR	SS	TT	WW	XX	YY	Wt. Lbs.
133	2.50	3.62	0.22	0.19	4.25	5.22	11/32	5.000	18
183	3.13	4.25	0.22	0.25	4.88	6.50	11/32	5.875	18
213	3.75	4.75	0.33	0.31	5.75	7.63	13/32	7.000	29
243	3.61	5.00	0.33	0.25	6.00	8.30	13/32	7.500	43
263	3.89	5.75	0.33	0.31	6.75	8.70	13/32	8.000	43
323	4.45	6.88	0.44	0.31	7.50	10.14	13/32	9.000	74
383	5.09	7.50	0.44	0.31	8.25	11.53	9/16	10.000	92

### Stock Output Bores

MINIMUM AND MAXIMUM BORE DIMENSIONS SHOWN.  
FOR ADDITIONAL STOCK OUTPUT BORE SIZES  
AVAILABLE SEE PAGE B-96.

MODEL	U (MIN.)	U (MAX.)	S	T	Z	ZT
133	N/A	5/8	0.75	2.25	3.00	5.25
183	15/16	1	0.91	2.41	3.31	5.71
213	15/16	1-1/2	0.85	2.78	3.63	6.41
243	1	1-1/2	0.75	2.97	3.72	6.69
263	1	1-1/2	0.66	2.97	3.63	6.60
323	1-7/16	2-3/16	0.22	3.78	4.00	7.78
383	1-7/16	2-3/16	0.72	3.78	4.50	8.28

BORE TOLERANCE NOMINAL + .002



Select hollow output bore models in this product line are now available with the HubLoc® keyless bushing system. Refer to pages i and ii at front of this catalog for features, available sizes, and ordering information.