

Hub City™ Worm Gear Drives

Double Reduction

PowerCubeX® Worm Speed Reducer Catalog Ratings

1800 Series • 130 Primary • 180 Secondary

SERIES	INPUT RPM	UNIT RATIO	OUTPUT RPM	PRIM. RATIO	SEC. RATIO	ALL	CONVENTIONAL OIL		PAO SYNTHETIC OIL		PAG SYNTHETIC OIL	
						INPUT HP	EFF. %	OUTPUT TORQUE	EFF. %	OUTPUT TORQUE	EFF. %	OUTPUT TORQUE
1800	1750	50	35.0	5	10	0.551	66.6	661	74.9	743	79.6	790
		75	23.3	5	15	0.446	61.8	744	69.4	836	73.8	889
		100	17.5	5	20	0.333	59.8	717	67.1	806	71.4	857
		150	11.7	10	15	0.251	57.1	775	64.1	871	68.2	926
		200	8.75	10	20	0.187	55.0	742	61.8	834	65.7	886
		250	7.00	10	25	0.152	52.7	721	59.3	810	63.0	861
		300	5.83	20	15	0.143	50.9	788	57.2	885	60.8	941
		400	4.38	20	20	0.107	49.0	754	55.0	847	58.5	901
		500	3.50	25	20	0.091	45.9	754	51.6	847	54.9	901
		600	2.92	20	30	0.091	41.1	806	46.1	906	49.1	963
		750	2.33	25	30	0.078	38.3	806	43.0	906	45.8	963
		900	1.94	30	30	0.068	36.3	806	40.8	906	43.4	963
		1000	1.75	50	20	0.056	37.5	754	42.1	847	44.8	901
		1200	1.46	40	30	0.056	33.1	806	37.2	906	39.5	963
		1500	1.17	50	30	0.048	30.9	806	34.7	906	36.9	963
		1800	0.97	60	30	0.044	28.3	806	31.8	906	33.8	963
		2000	0.88	50	40	0.036	28.8	748	32.4	840	34.4	894
2400	0.73	60	40	0.033	26.4	748	29.7	840	31.6	894		
3000	0.58	60	50	0.027	24.5	702	27.5	789	29.2	839		
3600	0.49	60	60	0.023	22.2	666	24.9	748	26.5	796		

2100 Series • 130 Primary • 210 Secondary

SERIES	INPUT RPM	UNIT RATIO	OUTPUT RPM	PRIM. RATIO	SEC. RATIO	ALL	CONVENTIONAL OIL		PAO SYNTHETIC OIL		PAG SYNTHETIC OIL	
						INPUT HP	EFF. %	OUTPUT TORQUE	EFF. %	OUTPUT TORQUE	EFF. %	OUTPUT TORQUE
2100	1750	50	35.0	5	10	0.89	67.2	1071	75.4	1203	80.2	1279
		75	23.3	5	15	0.66	63.8	1141	71.6	1282	76.2	1363
		100	17.5	5	20	0.53	60.5	1163	68.0	1307	72.3	1389
		150	11.7	10	15	0.37	59.1	1190	66.4	1337	70.6	1422
		200	8.75	10	20	0.30	55.7	1211	62.6	1361	66.5	1447
		250	7.00	10	25	0.238	53.9	1157	60.5	1300	64.4	1382
		300	5.83	20	15	0.212	52.9	1211	59.4	1361	63.2	1447
		400	4.38	20	20	0.173	49.5	1233	55.6	1385	59.2	1473
		500	3.50	25	20	0.147	46.4	1233	52.2	1385	55.5	1473
		600	2.92	20	30	0.130	43.9	1238	49.3	1391	52.5	1479
		750	2.33	25	30	0.112	41.0	1238	46.1	1391	49.0	1479
		900	1.94	30	30	0.098	38.9	1238	43.7	1391	46.5	1479
		1000	1.75	50	20	0.090	38.0	1233	42.8	1385	45.5	1473
		1200	1.46	40	30	0.081	35.6	1238	40.0	1391	42.5	1479
		1500	1.17	50	30	0.069	33.2	1238	37.3	1391	39.7	1479
		1800	0.97	60	30	0.063	30.5	1238	34.2	1391	36.4	1479
		2000	0.88	50	40	0.058	29.4	1224	33.1	1375	35.2	1462
2400	0.73	60	40	0.053	26.9	1224	30.3	1375	32.2	1462		
3000	0.58	60	50	0.041	25.4	1128	28.5	1267	30.3	1348		
3600	0.49	60	60	0.040	21.8	1127	24.5	1266	26.1	1346		

ADDITIONAL RATINGS FOR OTHER INPUT SPEEDS ARE AVAILABLE AT: WWW.HUBCITYINC.COM

OVERHUNG LOAD AND THRUST LOAD INFORMATION

OVERHUNG LOAD - LOW SPEED SHAFT - MODELS 1801 AND 1804 550 LBS. AT CENTER POINT OF SHAFT EXTENSION. MODELS 1802, AND 1805 NOT APPLICABLE. THRUST± UP OR DOWN 600 LBS.

OVERHUNG LOAD - LOW SPEED SHAFT — MODELS 2101 AND 2104 550 LBS. AT CENTER POINT OF SHAFT EXTENSION. MODELS 2102 AND 2105 NOT APPLICABLE.

THRUST± UP OR DOWN 600 LBS.

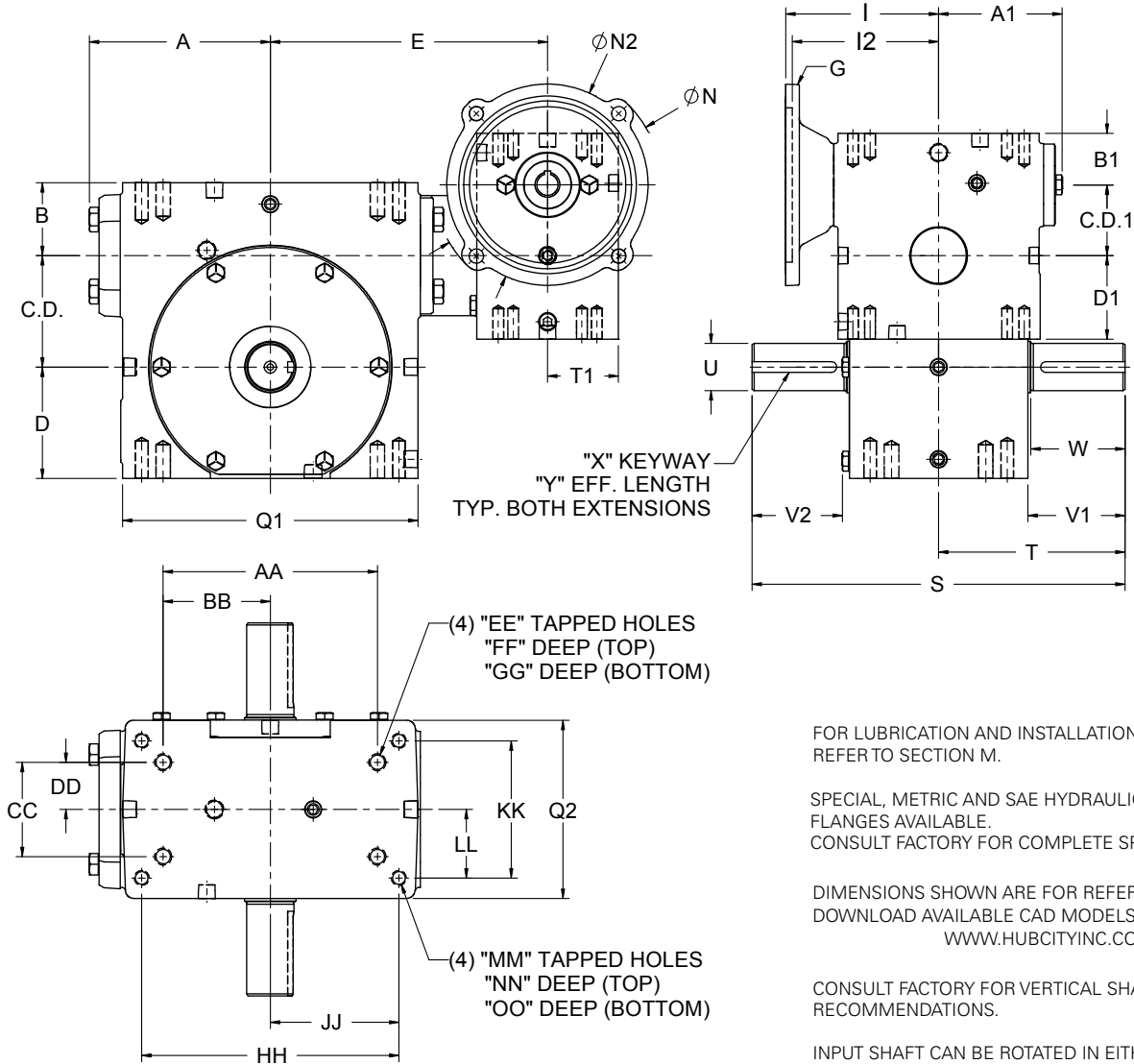
±OHL AND THRUST VALUES SHOWN ARE INDEPENDENT FUNCTIONS AND CANNOT BE APPLIED SIMULTANEOUSLY. REFER APPLICATIONS WITH COMBINED OHL AND THRUST TO REGAL CUSTOMER SERVICE DEPARTMENT.

OUTPUT TORQUE VALUES SHOWN ARE INCH-POUNDS (IN-LB).

Hub City™ Worm Gear Drives

Double Reduction Models

1304, 1504, 1804, 2104, 2404, 2604, 3004, 3204, 3804, 4204, 4504, 5204, GW6004, GW7004, GW8004, GW10004



FOR LUBRICATION AND INSTALLATION INSTRUCTIONS REFER TO SECTION M.

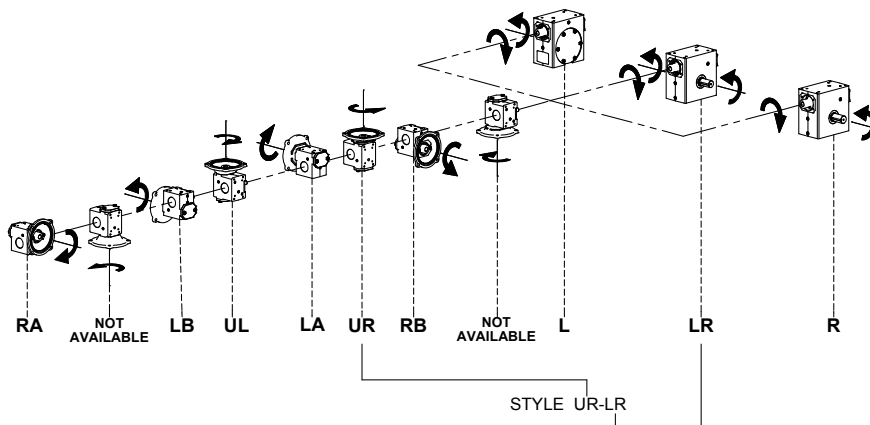
SPECIAL, METRIC AND SAE HYDRAULIC INPUT FLANGES AVAILABLE.
CONSULT FACTORY FOR COMPLETE SPECIFICATIONS.

DIMENSIONS SHOWN ARE FOR REFERENCE ONLY.
DOWNLOAD AVAILABLE CAD MODELS AT:
WWW.HUBCITYINC.COM

CONSULT FACTORY FOR VERTICAL SHAFT LUBRICATION RECOMMENDATIONS.

INPUT SHAFT CAN BE ROTATED IN EITHER DIRECTION.

Standard Styles Available



Hub City™ Worm Gear Drives

Double Reduction Models

1304, 1504, 1804, 2104, 2404, 2604, 3004, 3204, 3804, 4204, 4504, 5204, GW6004, GW7004, GW8004, GW10004

MODEL	PRIMARY	SECONDARY	C.D.	A	B	D	Q1	Q2	E	T1	C.D.1	A1	B1	D1	S	T
1304	134	134-56C	1.334	2.61	1.186	1.562	4.12	3.12	4.87	1.56	1.334	2.61	1.186	1.562	6.50	3.25
1504	GW134	154	1.541	3.14	1.928	1.906	4.88	3.44	5.85	1.84	1.334	2.61	1.610	1.720	8.62	4.31
1804	134	184-56C	1.751	3.23	1.374	1.875	5.16	3.44	5.50	1.56	1.334	2.61	1.186	1.562	7.00	3.50
2104	134	214-56C	2.064	3.61	1.500	2.437	5.88	4.12	5.87	1.56	1.334	2.61	1.186	1.562	8.50	4.25
2404	GW134	244	2.376	3.77	2.061	2.500	6.12	4.06	6.44	1.84	1.334	2.61	1.610	1.720	10.28	5.14
2604	134	264-56C	2.626	4.33	1.874	2.938	7.20	4.50	6.58	1.56	1.334	2.61	1.186	1.562	9.00	4.50
3004	GW184	304	3.001	4.84	2.624	3.250	8.12	5.25	7.86	1.78	1.750	3.24	1.940	2.060	13.50	6.75
3204	214	324-143TC	3.251	5.28	2.124	3.250	8.62	5.20	8.09	2.06	2.064	3.61	1.500	2.437	10.88	5.44
3804	214	384-143TC	3.751	4.90	2.374	3.937	9.60	5.62	8.61	2.06	2.064	3.61	1.500	2.437	13.38	6.69
4204	GW214	424	4.251	6.10	2.686	4.438	10.25	6.13	9.18	1.91	2.060	3.61	2.020	2.280	16.24	8.12
4504	324	454-213TC	4.501	5.23	2.499	4.625	9.25	4.63	9.14	2.60	3.251	5.28	2.124	3.250	14.50	7.25
5204	324	524-213TC	5.168	5.98	2.624	5.375	10.75	5.06	9.89	2.60	3.251	5.28	2.124	3.250	15.62	7.81
GW6004	GW324	GW601	6.000	N/A	4.000	6.500	14.25	8.13	13.30	2.88	3.250	5.02	2.630	3.500	20.00	10.00
GW7004	GW324	GW701	7.000	N/A	4.320	7.590	14.88	7.63	12.96	2.88	3.250	5.02	2.630	3.500	23.52	11.76
GW8004	GW424	GW801	8.000	N/A	4.100	8.860	17.00	8.63	13.94	3.07	4.250	6.10	2.690	4.440	24.50	12.25
GW10004	GW454	GW1001	10.000	N/A	5.110	10.360	20.88	9.53	17.05	3.60	5.250	7.50	3.630	5.120	29.50	14.75

MODEL	U	V1	V2	W	X	Y
1304	.625/.624	1.69	1.53	1.60	3/16 X 3/32	1.38
1504	.750/.7485	2.11	1.90	2.08	3/16 X 3/32	1.51
1804	.750/.749	1.78	1.57	1.54	3/16 X 3/32	1.41
2104	.875/.874	2.19	1.98	1.95	3/16 X 3/32	1.83
2404	1.125/1.1235	2.66	2.44	2.62	1/4 X 1/8	1.76
2604	1.250/1.249	2.25	2.04	N/A	1/4 X 1/8	1.85
3004	1.250/1.2485	3.60	3.36	3.57	1/4 X 1/8	2.26
3204	1.375/1.374	2.84	2.62	2.75	5/16 X 5/32	2.31
3804	1.500/1.499	3.88	N/A	N/A	3/8 X 3/16	3.16

MODEL	U	V1	V2	W	X	Y
4204	1.875/1.8735	4.50	4.21	4.47	1/2 X 1/4	3.06
4504**	1.625/1.624	4.18	N/A	3.90	3/8 X 3/16	3.28
5204***	1.750/1.749	4.47	N/A	4.17	3/8 X 3/16	3.50
GW6004	2.500	4.65	4.65	N/A	5/8 X 5/16 P&W	4.00
GW7004	2.750	5.65	5.65	N/A	5/8 X 5/16 P&W	4.00
GW8004	3.000	5.98	5.98	5.26	3/4 X 3/8 P&W	4.50
GW10004	3.750	6.76	6.76	6.39	7/8 X 7/16 P&W	5.00

** ALSO AVAILABLE WITH 1.750/1.749 (U) DIAMETER OUTPUT SHAFT. CONSULT FACTORY.
 *** ALSO AVAILABLE WITH 2.000/1.999 (U) DIAMETER OUTPUT SHAFT. CONSULT FACTORY.

MODEL	AA	BB	CC	DD	EE	FF	GG	HH	JJ	KK	LL	MM	NN	OO	WT. LBS.
1304	2.250	1.125	1.625	0.813	1/4 UNC	0.50	0.50	3.250	1.625	2.000	1.000	5/16 UNC	0.50	0.50	22
1504	4.188	2.094	2.750	1.375	5/16 UNC	0.63	0.63	N/A	N/A	N/A	N/A	N/A	N/A	N/A	26
1804	3.125	1.563	1.625	0.813	1/4 UNC	0.50	0.50	4.188	2.094	2.750	1.375	5/16 UNC	0.63	0.63	26
2104	4.000	2.000	2.000	1.000	3/8 UNC	0.50	0.70	5.000	2.500	2.875	1.438	3/8 UNC	0.70	0.70	36
2404	5.000	2.500	2.875	1.438	3/8 UNC	0.69	0.69	N/A	N/A	N/A	N/A	N/A	N/A	N/A	52
2604	4.875	2.438	2.688	1.344	3/8 UNC	0.70	0.70	6.375	3.188	3.375	1.688	3/8 UNC	0.70	0.70	48
3004	7.000	3.500	4.000	2.000	7/16 UNC	0.88	0.88	N/A	N/A	N/A	N/A	N/A	N/A	N/A	81
3204	6.250	3.125	2.750	1.375	1/2 UNC	0.75	0.75	7.500	3.750	4.000	2.000	7/16 UNC	0.88	0.88	85
3804	6.875	3.438	3.000	1.500	1/2 UNC	0.94	1.00	8.500	4.250	4.750	2.375	1/2 UNC	1.00	1.00	115
4204	8.500	4.250	5.000	2.500	5/8 UNC	1.00	1.00	N/A	N/A	N/A	N/A	N/A	N/A	N/A	135
4504	8.125	4.063	3.250	1.625	5/8 UNC	0.88	1.13	N/A	N/A	N/A	N/A	N/A	N/A	N/A	176
5204	9.500	4.750	3.750	1.875	5/8 UNC	1.00	1.25	N/A	N/A	N/A	N/A	N/A	N/A	N/A	202
GW6004	12.750	6.375	6.380	3.190	5/8 UNC	1.00	1.00	N/A	N/A	N/A	N/A	N/A	N/A	N/A	406
GW7004	12.500	6.250	5.500	2.750	1 UNC	1.56	1.56	N/A	N/A	N/A	N/A	N/A	N/A	N/A	482
GW8004	14.250	7.125	6.500	3.250	1 UNC	1.66	1.66	N/A	N/A	N/A	N/A	N/A	N/A	N/A	728
GW10004	17.750	8.875	6.875	3.438	1-1/4 UNC	2.04	2.04	N/A	N/A	N/A	N/A	N/A	N/A	N/A	1151

MODEL	G	I	I2	N	N2
1304	48CZ	3.46	N/A	4.36	3.87
	56C			6.63	6.50
1504	48CZ	3.46	N/A	4.36	3.87
	56C			6.63	6.50
1804	48CZ	3.46	N/A	4.36	3.87
	56C			6.63	6.50
2104	48CZ	3.46	N/A	4.36	3.87
	56C			6.63	6.50
2404	48CZ	3.46	N/A	4.36	3.87
	56C			6.63	6.50
2604	48CZ	3.46	N/A	4.36	3.87
	56C			6.63	6.50
3004	48CZ	4.09	N/A	4.36	3.87
	56C			6.63	6.50
	143TC			6.63	6.50

MODEL	G	I	I2	N	N2
3204	48CZ	4.46	N/A	4.36	3.87
	56C			6.63	6.50
3804	143TC				
	48CZ	4.46	N/A	4.36	3.87
56C	6.63			6.50	
4204	143TC				
	48CZ	4.46	N/A	4.36	3.87
56C	6.63			6.50	
4504	143TC				
	56C	6.14	N/A	6.50	6.50
143TC					
5204	182TC	N/A	6.34	9.00	9.00
	213TC			6.90	
5204	56C	6.14	N/A	6.50	6.50
	143TC				
5204	182TC	N/A	6.34	9.00	9.00
	213TC			6.90	

MODEL	G	I	I2	N	N2
GW6004	56C	6.14	N/A	6.50	6.50
	143TC				
	182TC	N/A	6.34	9.00	9.00
213TC	6.90				
GW7004	56C	6.14	N/A	6.50	6.50
	143TC				
	182TC	N/A	6.34	9.00	9.00
213TC	6.90				
GW8004	56C	6.45	N/A	6.50	6.50
	143TC				
	182TC	N/A	7.21	9.00	9.00
	213TC				
254TC					
GW10004	56C	7.85	N/A	6.50	6.50
	143TC				
	182TC	N/A	8.61	9.00	9.00
	213TC				
	254TC	N/A	9.17		