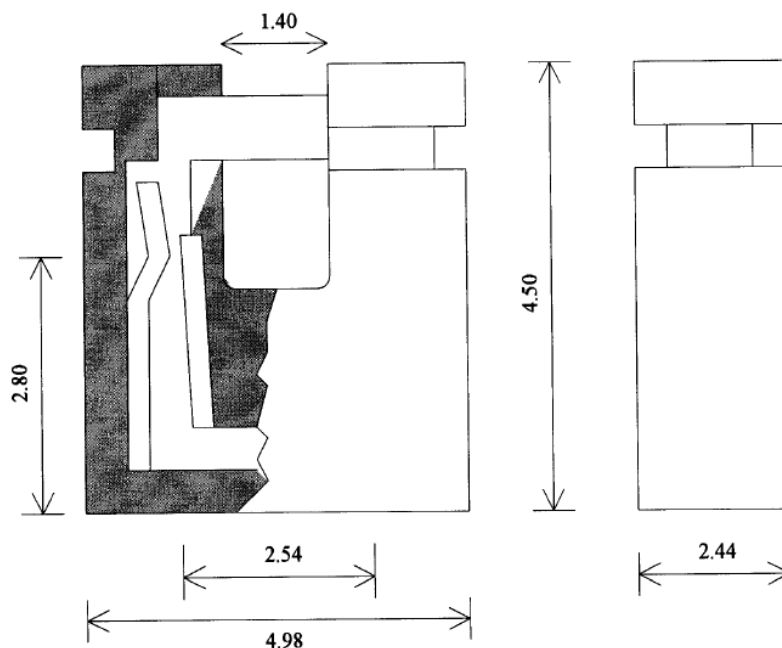


## Datasheet

### Female Straight Black Open Top 2 Way 1 Row 2.54mm Pitch

RS Stock number [251-8569](#)

#### Dimensions: mm



#### Specifications:

Insertion Force:	340 Grams Max.
Extraction Force:	50 Grams Min.
Current Rating:	1A Min.
Contact Resistance:	20m. Ohms Max.
Insulation Resistance:	1000m ohms Min.
Withstanding Voltage:	1000 Vrms Min.