

Miniature Limit Switch

D4CC-3060

Image

General-purpose Limit switches, General load, IP67, SPDT, Center roller lever, Front mounting

Shape/Structure	General-purpose Limit switches
Actuator	Center roller lever
Electrical ratings	1 A at 30 VDC
Contact form	SPDT
Degree of protection	IP67

Ratings / Performance

As of April 9, 2020

Shape/Structure	General-purpose Limit switches
Actuator	Center roller lever 17.5 dia. x 7 Stainless steel roller
Electrical ratings	1 A at 30 VDC
Contact form	SPDT
Load	General load
Ratings (DC): Non-Inductive load	Resistive load: 1 A at 30 VDC Lamp load: 1 A at 30 VDC Inductive load: 1 A at 30 VDC Motor load: 1 A at 30 VDC
Inrush current	NC: 5 A max. NO: 2.5 A max.
Ambient temperature	Operating: -10 to 70 °C (with no icing)
Ambient humidity	35 to 95% RH

Permissible operating frequency	Electrical: 30 operations / 1 minute max. Mechanical: 120 operations / 1 minute max.
Contact resistance (Initial value)	100 mΩ max.
Insulation resistance	100 MΩ min. (at 500 VDC)
Dielectric strength	Between each terminal of the same polarities: 1,000 VAC 50/60 Hz 1 min Between live-metallic part and ground: 1,500 VAC 50/60 Hz 1 min Between each terminal and non-live-metallic part: 1,500 VAC 50/60 Hz 1 min

Durability	Electrical: 200,000 operations min. (1 A at 125 VAC) Mechanical: 10 million operations min.
Vibration resistance	Malfunction: 10 to 55 Hz, 1.5 mm double amplitude
Shock resistance	Destruction: 1,000 m/s ² max. Malfunction: 500 m/s ² max.
Degree of protection	IP67

Operating Force (OF)	Standard value 6.67 N max.
Release Force (RF)	Standard value 1.47 N min.
Pre-Travel (PT)	Standard value 10±3 °
Movement Differential (MD)	Standard value 3 ° max.
Over-Travel (OT)	Standard value 50 ° min.

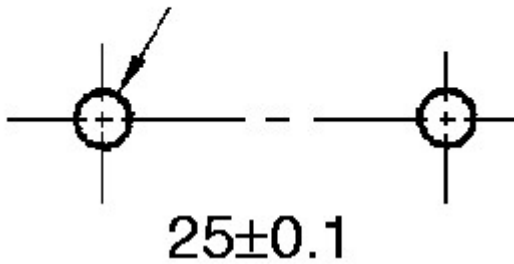
As of April 9, 2020

Dimensions

As of April 9, 2020

Mounting hole dimensions

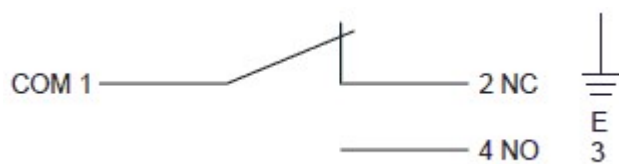
Two, 5.2-dia. or
M5 screw holes



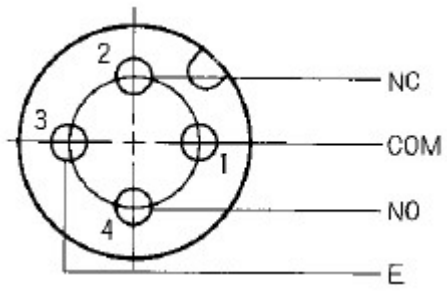
As of April 9, 2020

Circuits configuration

As of April 9, 2020



Connector pin arrangement



As of April 9, 2020