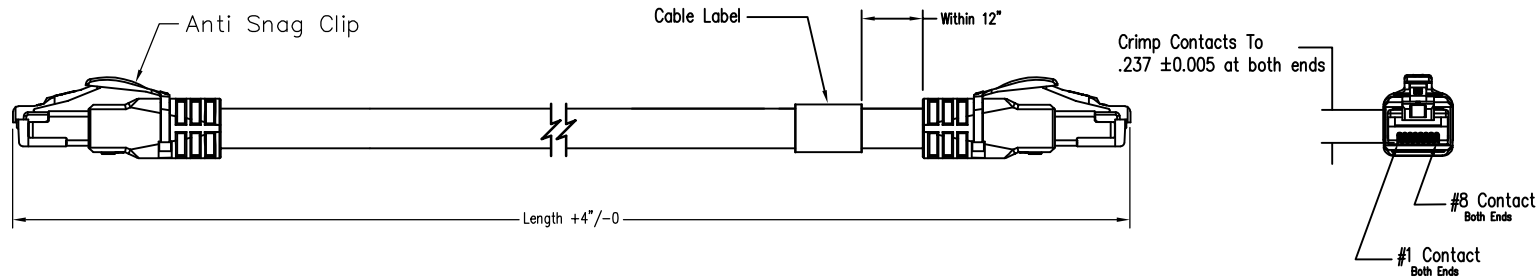


DATE	REV	ECN	APP'D. BY
05/21/19	A0	Released	OE
06/26/19	A1	11403	OE
09/25/19	A2	11450	ADB
11/07/19	A3	11473	BTS



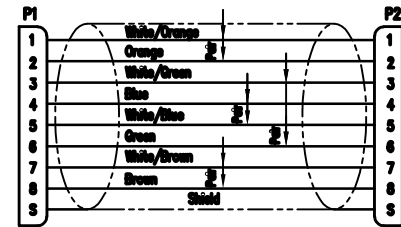
P/N Structure  
**BM-xSTxxxF-yy**

- 01 = TPE Jacket, Over molded boot, Latch Protector.
- UOM (See Part Numbers Reference Table)
- F = Feet
- M = Meters
- Length = xxx (001-100)
- T = Teal
- S = Shielded
- 5 = C5e
- 1 = C6a

LENGTH	Part Number
100 FT	BM-XST100F-01
10 FT	BM-XST010F-01
1 FT	BM-XST001F-01
10 M	BM-XST100M-01
1 M	BM-XST010M-01
0.5 M	BM-XST005M-01

Notes:

- 1) Each cable assembly to be individually bagged.
- 2) 50 $\mu$ m Gold plating on contacts
- 3) Cable Construction:
  - Stranded, Tin plated copper
  - 4Pr, SF/UTP.
  - Jacket Material: See Part Number
- 4) 100% Transmission Tested for Performance



**568B Standard Wiring Map**

ASSEMBLY FORMAT REV. 6/3/05



THIRD ANGLE PROJECTION			206 Van Vorst Street Jersey City, NJ 07302 +1 201 432 0463 <a href="http://www.belfuse.com">http://www.belfuse.com</a>	
DO NOT SCALE DRAWING DRAWING IS SUBJECT TO CHANGE WITHOUT NOTICE DIMENSIONS: INCHES [METRIC] UNLESS OTHERWISE SPECIFIED TOLERANCES ARE $\pm 0.05$ [0.13] ANGLES ARE $\pm 1^\circ$			<b>TITLE:</b> <b>IP20 Shielded Patchcord Assemblies, C5e &amp; C6a SF/UTP</b>	
SHEET NO. 1 OF 1		DRN BY: TLS      DATE 05/03/19 APPD BY: OE      DATE 05/21/19 DWG NO. CT999184      REV. A3		