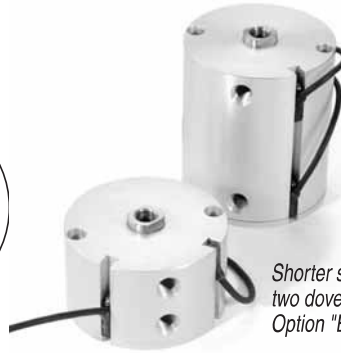
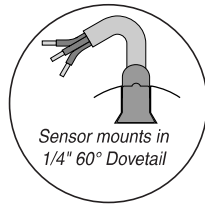


Magnetic Piston

Option -E

For 1-1/8" Bore and larger
Includes Dovetail Mounting Slots

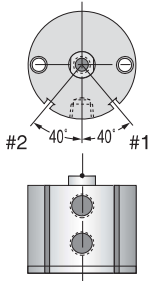
Order Sensors Separately



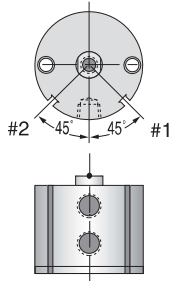
A single slot on longer stroke models has room to accommodate multiple sensors.

Shorter stroke cylinders are furnished with two dovetail mounting slots when Suffix Option "E" is specified.

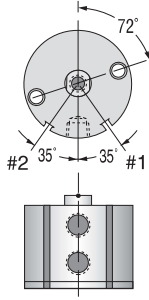
MK1-1/8



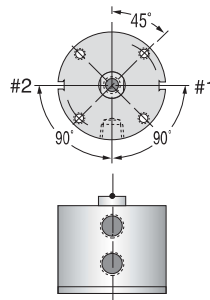
MK1-5/8



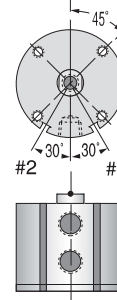
MK2



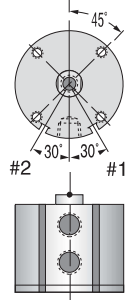
MK2-1/2



MK3



MK4

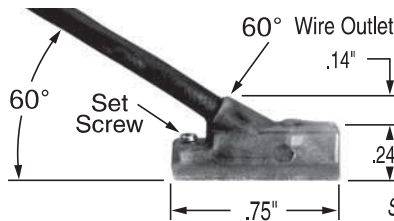


5

1/8" to 1" stroke models have 2 mounting slots. 1-1/2" stroke models have 1 slot at position #1. Ports are in-line for all Bores, all Strokes.

Low Profile, Solid State, Magnetic Piston Position Sensors

Temperature Range:
-20° to +80°C (-4° to +176°F)



Sensor housing rated NEMA 6/IP67. Encased in plastic housing, dovetail style sensors are corrosion resistant. 60° wire outlet allows close mounting. Profile shown here is typical.

Female Cordsets for Quick Disconnect	Length	Part No.
	1 Meter	CFC-1M
	2 Meters	CFC-2M
	5 Meters	CFC-5M

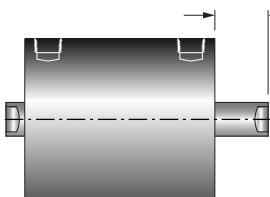
Ordering Guide – Dovetail Style Magnetic Sensors

Cylinder Model	Sensor Type	Prewired 9 ft. Part No.	Quick Disconnect Part No.*	LED	Electrical Characteristics
Series MK	Electronic	949-000-031	949-000-331	Yes	Sourcing, PNP, 5-28 VDC, 0.20 Amp Max current, 1.0 Voltage Drop Sinking, NPN, 5-28 VDC, 0.20 Amp Max current, 1.0 Voltage Drop
	Electronic	949-000-032	949-000-332	Yes	

Note: Quick disconnect style sensors are supplied with 6" pigtail. Order female cordsets separately.*

Double Rod

Option -DR G + stroke



Standard piston rod and rod bushing on both ends of the cylinder.

Bore	1/2"	3/4"	1-1/8"	1-5/8"	2"	2-1/2"	3"	4"
G	0.13	0.13	0.14	0.14	0.14	0.14	0.14	0.20

Viton Seals

Option -V

Use for elevated temperatures (-15° to + 400°F) or compatibility with exotic media. Consult engineering for compatibility information.