

# Pressure Gauge for General Purpose

# **G15/G27 Series**

RoHS



G15-10-01



G27-10-R1

- Be sure to read the precautions on page 891 for selection and mounting.

## Standard Specifications

Model		G15	G27
<b>Type</b>		Back side thread	
<b>Port size</b> <sup>(1)</sup>		R 1/8: M5 (Female thread)	R 1/16
<b>Fluid</b> <sup>(2) (3)</sup>		Air	
<b>Indication precision</b> <sup>(4)</sup>		±5% F.S. (Full span)	
<b>Material</b>	<b>Case (Surface treatment)</b>	Zinc die-casted (Black graphite coated)	
	<b>Clear cover</b>	Polycarbonate	
	<b>Stud (Surface treatment)</b>	Zinc die-casted (Black graphite coated)	
	<b>Bourdon tube</b>	Brass	
<b>Weight (kg)</b>		0.01	0.015

• Caution on handling: When drain or oil, etc. gets into the gauge, it may result in a malfunction.

Note 1) When mounting a pressure gauge, use caution not to tighten excessively. Excessive tightening will cause product to be damaged. Use a pipe tape for sealing.

Note 2) Water cannot be used as an operating fluid. Because the clearance gap of the air passage of the Bourdon tube is very small. Water will block the gap and cause a malfunction.

Similarly, when using other fluids, please consult with SMC for fluid compatibility information concerning possible corrosion and response delay, etc.

Note 3) Avoid freezing as this may cause a malfunction.

Note 4) The guaranteed temperature range is 23°C ±5°C.

## Model (Standard)

Model	Pressure range <sup>(1)</sup>		Indication unit	Connection thread
	MPa			
G15-10-01	0 to 1.0		MPa	R 1/8, M5 (Female thread)
G27-10-R1	0 to 1.0		MPa	R 1/16

Note 1) Do not apply more excessive pressure than max. pressure display. It will be a cause of malfunction.

## Model (Made to Order)

Other versions of this unit can be made on a Made-to-Order basis.

Please consult with SMC for details, as delivery times may be extended.

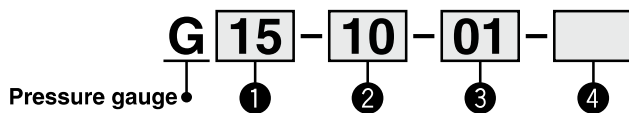
Model	Pressure range <sup>(1)</sup>		Indication unit	Connection thread
	MPa	psi		
G27-10-M5	0 to 1.0	—	MPa	M5 (Female thread)
G27-P10-R1-X30 <sup>(2)</sup>	0 to 1.0	0 to 150	MPa, psi	R 1/16

Note 1) Do not apply more excessive pressure than max. pressure display. It will be a cause of malfunction.

Note 2) Under the New Measurement Law, products for overseas use only (SI unit type for use in Japan)

# Pressure Gauge for General Purpose **G15/G27 Series**

## How to Order



	Symbol	Description	①	
			Size	
			G15	G27
+				
②	Max. display pressure	<b>10</b> <sup>(1)</sup>	●	●
		<b>P10</b> <sup>(1), (2)</sup>	—	○ <sup>(3)</sup>
+				
③	Connection thread	<b>01</b>	●	—
			—	●
		<b>R1</b>	—	●
+				
④	Special specification <small>Note 4)</small>	<b>Nil</b>	●	●
		<b>X30</b>	—	○ <sup>(3)</sup>

Note 1) Pressure other than 1.0 MPa is not available.

Note 2) This symbol must be used with Special specification "X30."

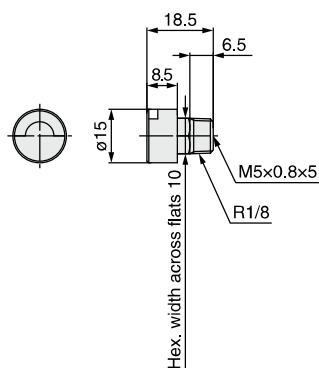
Note 3) Under the New Measurement Law, products for overseas use only (SI unit type for use in Japan)

Note 4) Wetted parts stainless steel specifications are not available.

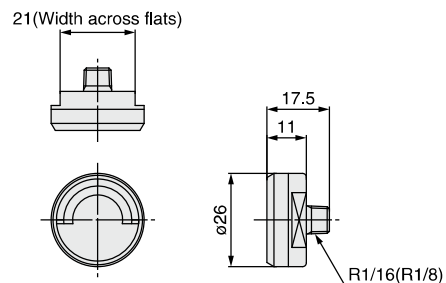
Note 5) Cover ring assembly is not available.

## Dimensions (Except Made-to-Order products)

**G15-10-01**



**G27-10-<sup>R1</sup><sub>01</sub>**



\* The dimensions in ( ): Connection thread R 1/8



# Pressure Gauge for General Purpose/ With Limit Indicator

# G36/GA36 Series RoHS



G36-10-01

- Be sure to read the precautions on page 891 for selection and mounting.

## Standard Specifications

Model		G36	GA36
<b>Type</b>		Back side thread	Vertical side thread
<b>Port size</b> <sup>(1)</sup>		R 1/8 (Option M: With M5 female thread)	R 1/8
<b>Fluid</b> <sup>(2) (4)</sup>		Air	
<b>Indication precision</b> <sup>(5)</sup>		±3% F.S. (Full span)	
<b>Material</b>	<b>Case (Surface treatment)</b>	Rolled steel (Electrodeposition coating black)	Stainless steel (Black melamine painted)
	<b>Clear cover</b> <sup>(3)</sup>	Polycarbonate (Part no.: G36-00-00-4)	Polycarbonate (Part no.: G36-00-00-3)
	<b>Stud (Surface treatment)</b>	Aluminum die-casted (Black disulfide molybdenum coat treated)	Brass
	<b>Bourdon tube</b>	Brass	
<b>Weight (kg)</b>		0.04	0.05

Note 1) When installing a pressure gauge, be careful not to fasten too tight. Excessive tightening will result in damage. Use a pipe tape for sealing.

Note 2) Not applicable to water as fluid because its stud is made from aluminum die-casted. Water may cause corrosion and block the air passage.

Note 3) Clear cover: G36-00-00-4 is not compatible with G36-00-00-3.

Note 4) Avoid freezing as this may cause a malfunction.

Note 5) The guaranteed temperature range is 23°C ±5°C.

## Model (Standard)

Model	Pressure range <sup>(1)</sup>		Indication unit	Connection thread	Note
	MPa				
G36-2-01	0 to 0.2		MPa	R 1/8	—
G36-4-01	0 to 0.4				
G36-7-01	0 to 0.7				
G36-10-01	0 to 1.0				
GA36-10-01	0 to 1.0				

Note 1) Do not apply pressure more than the maximum display pressure. This will cause a malfunction.

## Model (Made to Order)

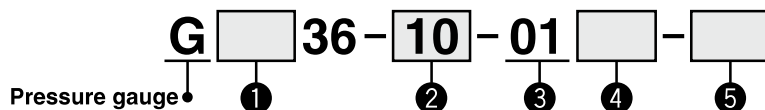
Other versions of this unit can be made on a Made-to-Order basis. Please consult with SMC for details, as delivery times may be extended.

Model	Pressure range <sup>(1)</sup>		Indication unit	Connection thread	Note
	MPa	psi			
G36-P2-01-X30 <sup>(2)</sup>	0 to 0.2	0 to 30	MPa, psi	R 1/8	—
G36-P10-01-X30 <sup>(2)</sup>	0 to 1.0	0 to 150			
G36-15-01	0 to 1.5	—	MPa		

Note 1) Do not apply pressure more than the maximum display pressure. This will cause a malfunction.

Note 2) Under the New Measurement Law, products for overseas use only (SI unit type for use in Japan).

**How to Order**



	Symbol	Description	①		
			Type		
			G36	GA36	
			Back side thread	Vertical side thread	
+					
②	Max. display pressure	2	0.2 MPa	●	●
		4	0.4 MPa	●	●
		7	0.7 MPa	●	●
		10	1.0 MPa	●	●
		15	1.5 MPa	●	●
		P2 <sup>(1)</sup>	0.2 MPa, 30 psi	○ <sup>(2)</sup>	○ <sup>(2)</sup>
		P4 <sup>(1)</sup>	0.4 MPa, 60 psi	○ <sup>(2)</sup>	○ <sup>(2)</sup>
		P7 <sup>(1)</sup>	0.7 MPa, 100 psi	○ <sup>(2)</sup>	○ <sup>(2)</sup>
		P10 <sup>(1)</sup>	1.0 MPa, 150 psi	○ <sup>(2)</sup>	○ <sup>(2)</sup>
P15 <sup>(1)</sup>	1.5 MPa, 220 psi	○ <sup>(2)</sup>	—		
+					
③	Connection thread	01	R 1/8	●	●
+					
④	Option	Nil	—	●	●
		M <sup>(3)</sup>	With M5 (Female thread)	●	—
+					
⑤	Special specification <sup>Note 4)</sup>	Nil	—	●	●
		X2	Stud parts nickel plated	— <sup>(6)</sup>	●
		X4	Oil-free (Wetted parts degrease washing)	●	●
		X30	Both MPa and psi	○ <sup>(2)</sup>	○ <sup>(2)</sup>

Note 1) This symbol must be used with Special specification "X30."

Note 2) Under the New Measurement Law, products for overseas use only (SI unit type for use in Japan)

Note 3) To use the pressure gauge with M5 (female thread), attach the joint when piping the tube. For combinations with the special specification products, please consult SMC separately.

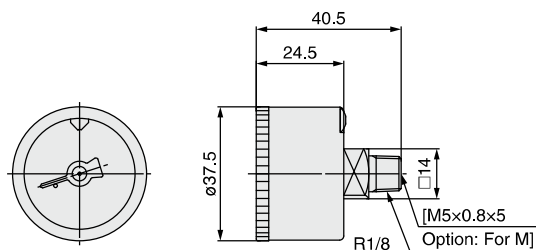
Note 4) Wetted parts stainless steel specifications are not available.

Note 5) Cover ring assembly is not available.

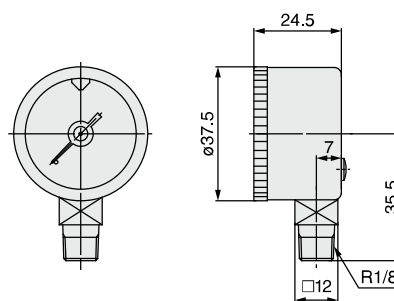
Note 6) When necessary, please contact SMC.

**Dimensions**

**G36-□□-01(M)**



**GA36-□□-01**



# Pressure Gauge for General Purpose/ With Limit Indicator

# G46/GA46 Series

RoHS



G46-10-02M-C

- Be sure to read the precautions on page 891 for selection and mounting.

## Standard Specifications

Model		G46	GA46
<b>Type</b>		Back side thread	Vertical side thread
<b>Port size</b> <sup>(1)</sup>		R 1/8, R 1/4 (Option M: with M5 female thread)	
<b>Fluid</b> <sup>(2) (4)</sup>		Air	
<b>Indication precision</b> <sup>(5)</sup>		±3% F.S. (Full span)	
<b>Material</b>	<b>Case (Surface treatment)</b>	Rolled steel (Electrodeposition coating black)	Stainless steel (Black melamine painted)
	<b>Clear cover</b> <sup>(3)</sup>	Polycarbonate Part no.: G46-00-00-4	Polycarbonate Part no.: G46-00-00-3
	<b>Stud (Surface treatment)</b>	Aluminum die-casted (Black disulfide molybdenum coated)	Brass
	<b>Bourdon tube</b>	Brass	
<b>Weight (kg)</b>		0.05	0.075
<b>Attachment: With cover ring assembly</b>	<b>C</b>	Part no.: 1305104-1A	—
	<b>C2</b>	Part no.: 1305104-9A	

Note 1) When mounting a pressure gauge, use caution not to tighten excessively. Excessive tightening will cause product to be damaged. Use a pipe tape for sealing.

Note 2) Not applicable to water as fluid because its stub is made from aluminum die-casting. Water may cause corrosion and block the air passage.

Note 3) Clear cover: G46-00-00-4 is not compatible with G46-00-00-3.

Note 4) Avoid freezing as this may cause a malfunction.

Note 5) The guaranteed temperature range is 23°C ±5°C.

## Model (Standard)

Model	Pressure range <sup>(1)</sup>		Indication unit	Connection thread	Note	
	MPa	psi				
G46-2-01/02	0 to 0.2	—	MPa	R 1/8, 1/4	—	
G46-4-01/02	0 to 0.4	—				
G46-7-01/02	0 to 0.7	—				
G46-10-01/02	0 to 1.0	—				
G46-2-01 to 02M	0 to 0.2	—		R 1/8, 1/4 M5 (Female thread)		
G46-4-01 to 02M	0 to 0.4	—				
G46-7-01 to 02M	0 to 0.7	—				
G46-10-01 to 02M	0 to 1.0	—				
GA46-10-01 to 02	0 to 1.0	—				R 1/8, 1/4

Note 1) Do not apply pressure more than the maximum display pressure. This will cause a malfunction.

## Model (Made to Order)

Other versions of this unit can be made on a Made-to-Order basis. Please consult with SMC for details, as delivery times may be extended.

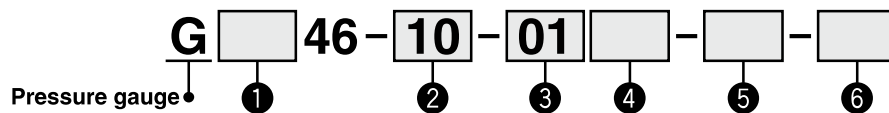
Model	Pressure range <sup>(1)</sup>		Indication unit	Connection thread	Note		
	MPa	psi					
G46-2-01 to 02-C/C2	0 to 0.2	—	MPa	R 1/8, 1/4	With cover ring assembly		
G46-4-01 to 02-C/C2	0 to 0.4	—					
G46-7-01 to 02-C/C2	0 to 0.7	—					
G46-10-01 to 02-C/C2	0 to 1.0	—					
G46-2-01 to 02M-C/C2	0 to 0.2	—		R 1/8, 1/4 M5 (Female thread)			
G46-4-01 to 02M-C/C2	0 to 0.4	—					
G46-7-01 to 02M-C/C2	0 to 0.7	—					
G46-10-01 to 02M-C/C2	0 to 1.0	—					
G46-P2-01 to 02-X30 <sup>(2)</sup>	0 to 0.2	0 to 30				MPa, psi	R 1/8, 1/4
G46-P10-01 to 02-X30 <sup>(2)</sup>	0 to 1.0	0 to 150					
G46-P2-01 to 02-C/C2-X30 <sup>(2)</sup>	0 to 0.2	0 to 30					
G46-P10-01 to 02-C/C2-X30 <sup>(2)</sup>	0 to 1.0	0 to 150					
G46-15-02	0 to 1.5	—	MPa	R 1/4	—		

Note 1) Do not apply pressure more than the maximum display pressure. This will cause a malfunction.

Note 2) Under the New Measurement Law, products for overseas use only (SI unit type for use in Japan).

# Pressure Gauge for General Purpose/With Limit Indicator **G46/GA46 Series**

## How to Order



		Symbol	Description	<b>1</b>	
				Type	
				<b>G46</b>	<b>GA46</b>
				Back side thread	Vertical side thread
		+			
<b>2</b>	Max. display pressure	<b>2</b>	0.2 MPa	●	●
		<b>4</b>	0.4 MPa	●	●
		<b>7</b>	0.7 MPa	●	●
		<b>10</b>	1.0 MPa	●	●
		<b>15</b>	1.5 MPa	●	●
		<b>P2</b> <sup>(1)</sup>	0.2 MPa, 30 psi	○ <sup>(2)</sup>	○ <sup>(2)</sup>
		<b>P4</b> <sup>(1)</sup>	0.4 MPa, 60 psi	○ <sup>(2)</sup>	○ <sup>(2)</sup>
		<b>P7</b> <sup>(1)</sup>	0.7 MPa, 100 psi	○ <sup>(2)</sup>	○ <sup>(2)</sup>
		<b>P10</b> <sup>(1)</sup>	1.0 MPa, 150 psi	○ <sup>(2)</sup>	○ <sup>(2)</sup>
<b>P15</b> <sup>(1)</sup>	1.5 MPa, 220 psi	○ <sup>(2)</sup>	○ <sup>(2)</sup>		
		+			
<b>3</b>	Connection thread	<b>01</b>	R 1/8	●	●
		<b>02</b>	R 1/4	●	●
		+			
<b>4</b>	Option	<b>Nil</b>	—	●	●
		<b>M</b> <sup>(3)</sup>	With M5 (Female thread)	●	—
		+			
<b>5</b>	Attachment	<b>Nil</b>	Without cover ring assembly	●	●
		<b>C</b>	Clear cover has no protrusion. (Clear cover is irremovable.)	●	—
		<b>C2</b>	Clear cover has protrusion. (Clear cover is removable.) The wrench flats protrude.	●	—
		+			
<b>6</b>	Special specification	<b>Nil</b>	—	●	●
		<b>X2</b>	Stud parts Nickel plated	— <sup>(5)</sup>	●
		<b>X30</b>	Both MPa and psi	○ <sup>(2)</sup>	○ <sup>(2)</sup>

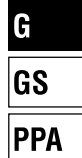
Note 1) This symbol must be used with Special specification "X30."

Note 2) ○: Under the New Measurement Law, products for overseas use only (SI unit type for use in Japan).

Note 3) To use the pressure gauge with M5 (female thread), attach the joint when piping the tube. For combinations with the special specification products, please consult SMC separately.

Note 4) When wetted parts with the stainless steel specifications are needed, use the G46-□-□-SRB.

Note 5) When necessary, please contact SMC.



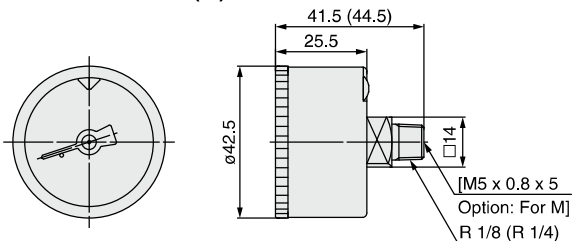


# Pressure Gauge for General Purpose/With Limit Indicator **G46/GA46 Series**

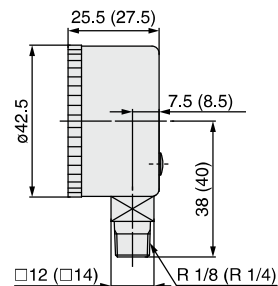
## Dimensions (Except Made-to-Order products)

\* The dimensions in ( ): Connecting thread R 1/4

### G46-□□-01 to 02 (M)



### GA46-□□-01 to 02

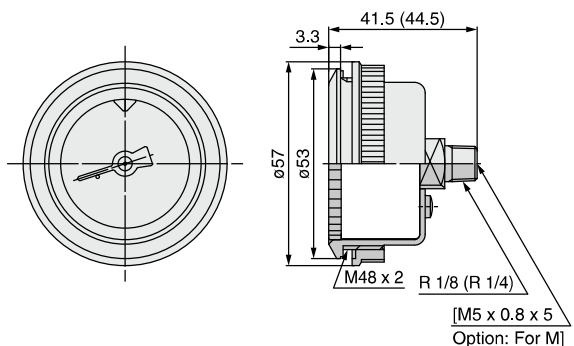


### G46-□□-01 to 02 (M)-C

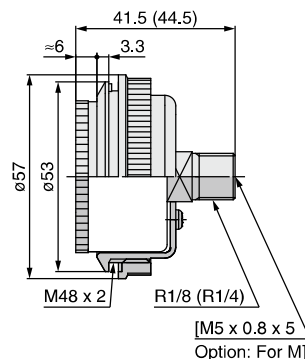
### G46-□□-01 to 02 (M)-C2

With cover ring assembly  
(For panel mount)

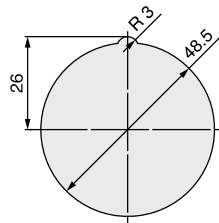
**Type C**  
(Clear cover is not removable.)



**Type C2**  
(Clear cover is removable. The wrench flats protrude.)



### Panel fitting dimensions Plate thickness Max. 3.5t





# Pressure Gauge for General Purpose

# **G33/GA33 Series**

RoHS



- Be sure to read the precautions on page 891 for selection and mounting.

## Standard Specifications

Model		G33	GA33
Type		Back side thread	Vertical side thread
Port size <sup>(1)</sup>		R 1/8	
Fluid <sup>(2,3)</sup>		Air	
Indication precision <sup>(4)</sup>		±3% F.S. (Full span)	
Material	Case	Stainless steel	
	Clear cover	Glass	
	Stud	Brass	
	Bourdon tube	Brass	
Weight [kg]	0.03	0.033	
Applicable model	IP5000, IR1000, IT1000	ARM2500, 3000	

Note 1) When mounting a pressure gauge, use caution not to tighten excessively. Excessive tightening will cause product to be damaged. Use a pipe tape for sealing.

Note 2) When using other fluids, please consult with SMC for fluid compatibility information concerning corrosive potential.

Note 3) Avoid freezing as this may cause a malfunction.

Note 4) The guaranteed temperature range is 23°C ±5°C.

## Model (Standard)

Model	Pressure range <sup>(1)</sup>		Indication unit	Connection thread	Note
	MPa				
G33-2-01	0 to 0.2		MPa	R 1/8	—
G33-3-01	0 to 0.3				
G33-4-01	0 to 0.4				
G33-6-01	0 to 0.6				
G33-10-01	0 to 1.0				
GA33-2-01	0 to 0.2				
GA33-4-01	0 to 0.4				
GA33-7-01	0 to 0.7				
GA33-10-01	0 to 1.0				

Note 1) Do not apply pressure more than the maximum display pressure. This will cause a malfunction.

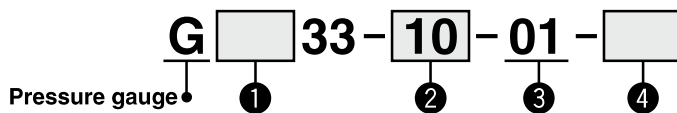
## Model (Made to Order)

Model	Pressure range <sup>(1)</sup>		Indication unit	Connection thread	Note
	MPa	psi			
G33-2-01-X2	0 to 0.2	—	MPa	R 1/8	X2: Stud parts electroless nickel plated
G33-4-01-X2	0 to 0.4	—			
G33-6-01-X2	0 to 0.6	—			
G33-10-01-X2	0 to 1.0	—			
GA33-2-01-X2	0 to 0.2	—			
GA33-4-01-X2	0 to 0.4	—			X2: Stud parts nickel plated
GA33-7-01-X2	0 to 0.7	—			
GA33-10-01-X2	0 to 1.0	—			
G33-10-01-X4	0 to 1.0	—			
GA33-P10-01-X30 <sup>(2)</sup>	0 to 1.0	0 to 150			

Note 1) Do not apply pressure more than the maximum display pressure. This will cause a malfunction.

Note 2) Under the New Measurement Law, products for overseas use only (SI unit type for use in Japan)

## How to Order



		Symbol	Description	①	
				Type	
				G33	GA33
				Back side thread	Vertical side thread
		+			
②	Max. display pressure	2	0.2 MPa	●	●
		3	0.3 MPa	●	—
		4	0.4 MPa	●	●
		6	0.6 MPa	●	—
		7	0.7 MPa	●	●
		10	1.0 MPa	●	●
		P2 <sup>(1)</sup>	0.2 MPa, 30 psi	○ <sup>(2)</sup>	—
		P3 <sup>(1)</sup>	0.3 MPa, 45 psi	○ <sup>(2)</sup>	—
		P4 <sup>(1)</sup>	0.4 MPa, 60 psi	○ <sup>(2)</sup>	—
		P7 <sup>(1)</sup>	0.7 MPa, 100 psi	○ <sup>(2)</sup>	—
P10 <sup>(1)</sup>	1.0 MPa, 150 psi	○ <sup>(2)</sup>	○ <sup>(2)</sup>		
		+			
③	Connection thread	01	R 1/8	●	●
		+			
④	Special specification <small>Note 3</small>	Nii	—	●	●
		X2	Stud parts nickel plated	●	●
		X4	Oil-free (Wetted parts degrease washing)	●	●
		X30	Both MPa and psi	○ <sup>(2)</sup>	○ <sup>(2)</sup>

Note 1) This symbol must be used with Special specification "X30."

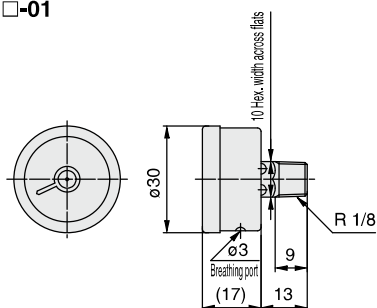
Note 2) Under the New Measurement Law, products for overseas use only (SI unit type for use in Japan)

Note 3) X3 (Wetted parts stainless steel) specifications are not available.

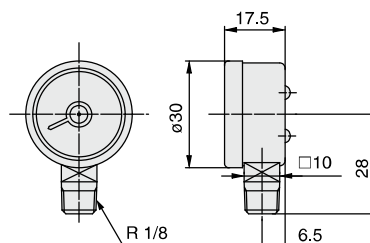
Note 4) Cover ring assembly is not available.

## Dimensions

**G33-□□-01**



**GA33-□□-01**



# Pressure Gauge for General Purpose (DT type)

# **G43 Series**

RoHS



G43-10-01

- Be sure to read the precautions on page 891 for selection and mounting.

## Standard Specifications

Model		G43
<b>Type</b>		Back side thread
<b>Port size</b> <sup>(1)</sup>		R 1/8, R 1/4
<b>Fluid</b> <sup>(2)</sup>		Air
<b>Indication precision</b> <sup>(3)</sup>		±3% F.S. (Full span)
<b>Material</b>	<b>Case</b>	Stainless steel
	<b>Clear cover</b>	Glass
	<b>Stud</b>	Brass
	<b>Bourdon tube</b>	Brass
<b>Weight [kg]</b>		0.07
<b>Applicable model</b>		IP200, IP8000, IR2000, IR3000, IT2000, IT4000

Note 1) When mounting a pressure gauge, use caution not to tighten excessively. Excessive tightening will cause product to be damaged. Use a pipe tape for sealing.

Note 2) Avoid freezing as this may cause a malfunction.

Note 3) The guaranteed temperature range is 23°C ±5°C.

## Model (Standard)

Model	Pressure range <sup>(1)</sup>	Indication unit	Connection thread	Note
	MPa			
G43-2-01 to 02	0 to 0.2	MPa	R 1/8, R 1/4	—
G43-4-01 to 02	0 to 0.4			
G43-6-01	0 to 0.6		R 1/8	
G43-7-01 to 02	0 to 0.7		R 1/8, R 1/4	
G43-10-01 to 02	0 to 1.0			

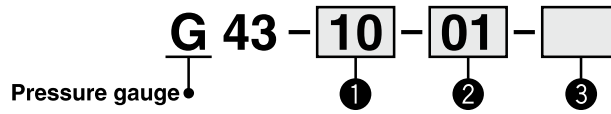
Note 1) Do not apply pressure more than the maximum display pressure. This will cause a malfunction.

## Model (Made to Order)

Model	Pressure range <sup>(1)</sup>	Indication unit	Connection thread	Note	
	MPa				
G43-2-01 to 02-X2	0 to 0.2	MPa	R 1/8, R 1/4	X2: Stud parts nickle plated	
G43-4-01 to 02-X2	0 to 0.4				
G43-6-01-X2	0 to 0.6		R 1/8		
G43-7-01 to 02-X2	0 to 0.7		R 1/8, R 1/4		
G43-10-01 to 02-X2	0 to 1.0				
G43-2-01 to 02-X3	0 to 0.2		R 1/8, R 1/4	X3: Wetted parts stainless steel	
G43-4-01 to 02-X3	0 to 0.4				
G43-6-01-X3	0 to 0.6				R 1/8
G43-7-01 to 02-X3	0 to 0.7				R 1/8, R 1/4
G43-10-01 to 02-X3	0 to 1.0				
G43-2-01-X4	0 to 0.2		R 1/8	X4: Oil-free (Wetted parts degreasing)	
G43-4-01 to 02-X4	0 to 0.4				
G43-7-01 to 02-X4	0 to 0.7	R 1/8, R 1/4			
G43-10-01 to 02-X4	0 to 1.0				

Note 1) Do not apply pressure more than the maximum display pressure. This will cause a malfunction.

## How to Order

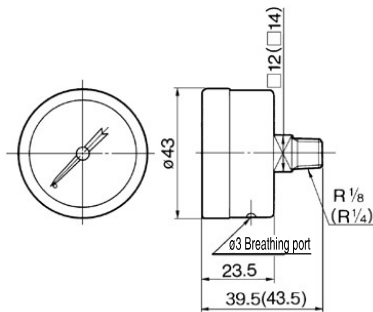


	Symbol	Description	G43
	+		
① Max. display pressure	<b>2</b>	0.2 MPa	●
	<b>3</b>	0.3 MPa	●
	<b>4</b>	0.4 MPa	●
	<b>6</b>	0.6 MPa	●
	<b>7</b>	0.7 MPa	●
	<b>10</b>	1.0 MPa	●
	<b>P2</b> <sup>(1)</sup>	0.2 MPa, 30 psi	○ <sup>(2)</sup>
	<b>P4</b> <sup>(1)</sup>	0.4 MPa, 60 psi	○ <sup>(2)</sup>
	<b>P6</b> <sup>(1)</sup>	0.6 MPa, 90 psi	○ <sup>(2)</sup>
	<b>P7</b> <sup>(1)</sup>	0.7 MPa, 100 psi	○ <sup>(2)</sup>
<b>P10</b> <sup>(1)</sup>	1.0 MPa, 150 psi	○ <sup>(2)</sup>	
	+		
② Connection thread	<b>01</b>	R 1/8	●
	<b>02</b>	R 1/4	●
	+		
③ Special specification	<b>Nil</b>	—	●
	<b>X2</b>	Stud parts nickel plated	●
	<b>X3</b> <sup>(3)</sup>	Wetted parts stainless steel	●
	<b>X4</b>	Oil-free (Wetted parts degrease washing)	●
	<b>X30</b>	Both MPa and psi	○ <sup>(2)</sup>

Note 1) This symbol must be used with Special specification "X30."  
 Note 2) Under the New Measurement Law, products for overseas use only (SI unit type for use in Japan)  
 Note 3) Movable parts (gear, etc.) inside pressure gauge are made of brass.  
 Note 4) Cover ring assembly is not available.

### Dimensions (Except Made-to-Order products)

G43-□-01 to 02



\* The dimensions in ( ): Connection thread R 1/4



# With Color Zone Limit Indicator

# G36-L/G46-L Series RoHS



G36-10-01-L

G46-10-02-L

## Standard Specifications

Model		G36-L	G46-L
<b>Type</b>		Back side thread	
<b>Port size</b> <sup>(1)</sup>		R 1/8	R 1/8, R 1/4
<b>Fluid</b> <sup>(2)</sup> <sup>(3)</sup>		Air	
<b>Indication precision</b> <sup>(4)</sup>		±3%F.S. (Full span)	
<b>Material</b>	<b>Case</b> (Surface treatment)	Stainless steel (Black melamine painted)	
	<b>Clear cover</b>	Polycarbonate (Part no.: G36-00-00-3) Nylon (Part no.: G36-00-00-3N)	Polycarbonate (Part no.: G46-00-00-3) Nylon (Part no.: G46-00-00-3N)
	<b>Stud</b>	Brass	
	<b>Bourdon tube</b>	Brass	
<b>Weight (kg)</b>		0.04	0.05
<b>Attachment: With cover ring assembly</b>	C	—	Part no.: 1305104-1A <sup>(5)</sup>
	C2	—	Part no.: 1305104-9A

Note 1) When mounting a pressure gauge, use caution not to tighten excessively. Excessive tightening will cause product to be damaged. Use a pipe tape for sealing.

Note 2) When using other fluids, please consult with SMC for fluid compatibility information concerning corrosive potential.

Note 3) Avoid freezing as this may cause a malfunction.

Note 4) The guaranteed temperature range is 23°C ±5°C.

Note 5) C only applies when the material of the clear cover is polycarbonate.

## Model (Standard)

Model	Pressure range <sup>(1)</sup>		Green zone setting range		Indication unit	Connection thread	Note
	MPa		Minimum setting range MPa	Maximum setting range MPa			
G36-2-01-L□	0 to 0.2		0.01	0.1	MPa	R 1/8	—
G36-4-01-L□	0 to 0.4		0.02	0.2			
G36-10-01-L□	0 to 1.0		0.05	0.5			
G46-2-01 to 02-L□	0 to 0.2		0.01	0.1		R 1/8 1/4	
G46-4-01 to 02-L□	0 to 0.4		0.02	0.2			
G46-10-01 to 02-L□	0 to 1.0		0.05	0.5			

Note 1) Do not apply pressure more than the maximum display pressure. This will cause a malfunction.

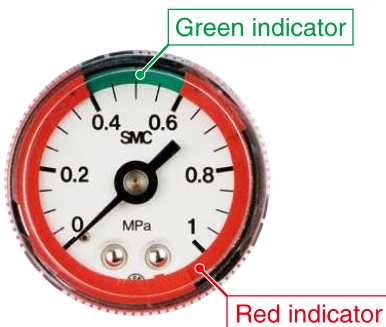
## Model (Made to Order)

Model	Pressure range <sup>(1)</sup>		Green zone setting range		Indication unit	Connection thread	Note
	MPa	psi	Minimum setting range MPa (psi)	Maximum setting range MPa (psi)			
G36-P2-01-L□-X30	0 to 0.2	0 to 30	0.01 (2)	0.1 (14)	MPa psi	R 1/8	—
G36-P4-01-L□-X30	0 to 0.4	0 to 60	0.02 (4)	0.2 (28)			
G36-P10-01-L□-X30	0 to 1.0	0 to 150	0.05 (10)	0.5 (70)			
G46-P2-01 to 02-L□-X30	0 to 0.2	0 to 30	0.01 (2)	0.1 (14)		R 1/8 1/4	
G46-P4-01 to 02-L□-X30	0 to 0.4	0 to 60	0.02 (4)	0.2 (28)			
G46-P10-01 to 02-L□-X30	0 to 1.0	0 to 150	0.05 (10)	0.5 (70)			

Note 1) Do not apply pressure more than the maximum display pressure. This will cause a malfunction.

Note 2) Under the New Measurement Law, products for overseas use only (SI unit type for use in Japan).

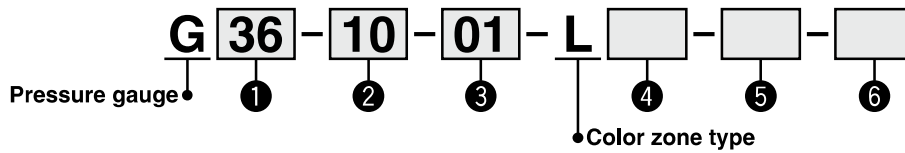
■ Red and green zones offer improved visibility of pressure control range.



Indicator adjusts to highlight preferred range.



**How to Order**



		Symbol	Description	<b>1</b>	
				Size	
				<b>G36</b>	<b>G46</b>
		+			
<b>2</b>	Max. display pressure	<b>2</b>	0.2 MPa	●	●
		<b>4</b>	0.4 MPa	●	●
		<b>10</b>	1.0 MPa	●	●
		<b>P2</b> <sup>(1)</sup>	0.2 MPa, 30 psi	○ <sup>(2)</sup>	○ <sup>(2)</sup>
		<b>P4</b> <sup>(1)</sup>	0.4 MPa, 60 psi	○ <sup>(2)</sup>	○ <sup>(2)</sup>
		<b>P10</b> <sup>(1)</sup>	1.0 MPa, 150 psi	○ <sup>(2)</sup>	○ <sup>(2)</sup>
		+			
<b>3</b>	Connection thread	<b>01</b>	R 1/8	●	●
		<b>02</b>	R 1/4	—	●
		+			
<b>4</b>	Clear cover material	<b>Nil</b>	Polycarbonate	●	●
		<b>N</b>	Nylon	●	●
		+			
<b>5</b>	Attachment	<b>Nil</b>	Without cover ring assembly	—	●
		<b>C</b>	Clear cover has no protrusion. (Clear cover is irremovable.)	—	△ <sup>(3)</sup>
		<b>C2</b>	Clear cover has protrusion. (Clear cover is removable.) The wrench flats protrude.	—	●
		+			
<b>6</b>	Special specification	<b>Nil</b>	—	●	●
		<b>X2</b>	Stud parts nickel plated	●	—
		<b>X30</b>	Both MPa and psi	○ <sup>(2)</sup>	○ <sup>(2)</sup>

Note 1) This symbol must be used with Special specification "X30."

Note 2) Under the New Measurement Law, products for overseas use only (SI unit type for use in Japan)

Note 3) △ only applies when the material of the clear cover is polycarbonate.

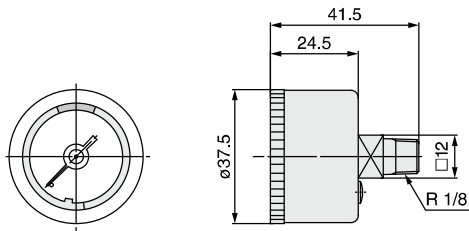




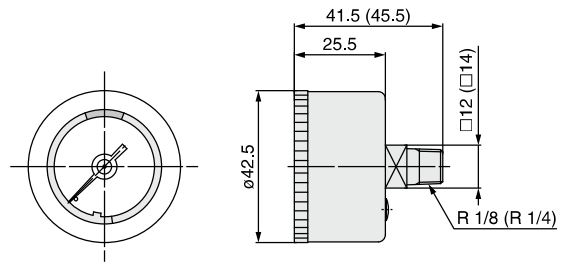
# With Color Zone Limit Indicator **G36-L/G46-L Series**

**Dimensions** \* The dimensions in ( ): Connection thread R 1/4

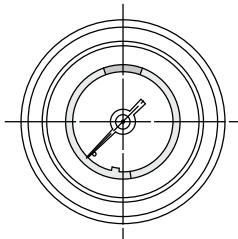
**G36-□□-01-L (N)**



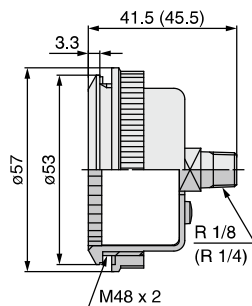
**G46-□□-01 to 02-L(N)**



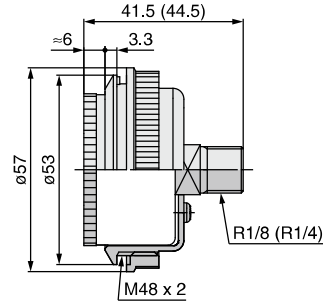
**G46-□□-01 to 02-L-C**  
**G46-□□-01 to 02-L(N)-C2**  
 With cover ring assembly  
 (For panel mount)



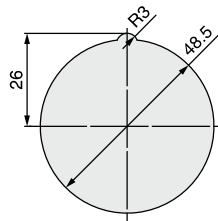
**Type C**  
 (Clear cover is not removable.)



**Type C2**  
 (Clear cover is removable. The wrench flats protrude.)



**Panel fitting dimensions**  
 Plate thickness Max. 3.5 t





# Pressure Gauge with Color Zone Limit Indicator **G53-L/G63-L**



G53-10-02

G63-10-02

## Standard Specifications

Model	G53-L	G63-L
Type	Back side thread	
Connection thread*1	R1/8, R1/4	
Fluid*2	Air	
Indication precision*3	±3%F.S.(Full span)	
Material	Case	Stainless steel
	Clear cover	Polycarbonate (Part no.: G53-00-00-3)   Polycarbonate (Part no.: G63-00-00-3)
	Stud	Brass
	Bourdon tube	Brass
Weight [kg]	0.093	0.107

• Caution for handling: Avoid freezing as this may cause a malfunction.

\*1 When mounting a pressure gauge, use caution not to tighten it excessively. Excessive tightening will damage the product.

Use sealant tape for sealing.

\*2 Before using with other fluids, please contact SMC for fluid compatibility information concerning corrosive potential.

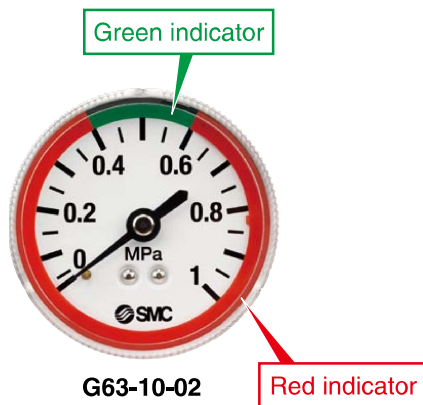
\*3 The guaranteed temperature range is 23°C ±5°C.

## Model (Standard)

Model	Pressure range*1	Green zone setting range		Indication unit	Connection thread
	MPa	Minimum setting range [MPa]	Maximum setting range [MPa]		
G53-2-01 to 02-L	0 to 0.2	0.01	0.1	MPa	R1/8, R1/4
G53-4-01 to 02-L	0 to 0.4	0.02	0.2		
G53-7-01 to 02-L	0 to 0.7	0.05	0.35		
G53-10-01 to 02-L	0 to 1.0	0.05	0.5		
G63-10-01 to 02-L	0 to 1.0	0.05	0.5		

\*1 Do not apply any amount of pressure that exceeds the maximum display pressure. This will cause a malfunction.

■ Red and green zones offer improved visibility of pressure control range.

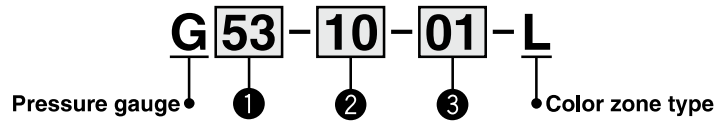


Indicator can be adjusted to highlight preferred range



# Pressure Gauge with Color Zone Limit Indicator **G53-L/G63-L Series**

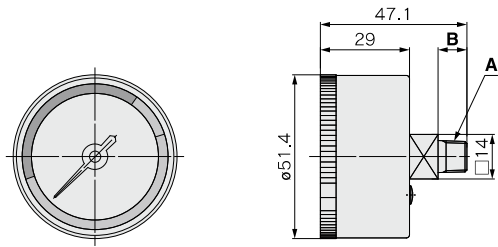
## How to Order



	Symbol	Description	①	
			Size	
			G53	G63
		+		
②	Max. display pressure	2	●	—
		4	●	—
		7	●	—
		10	●	●
		+		
③	Connection thread	01	●	●
		02	●	●

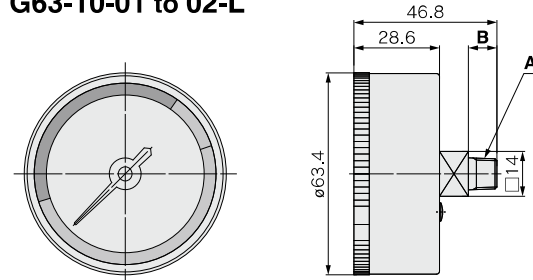
## Dimensions

### G53-□-01 to 02-L



Part no.	A	B
<b>G53-□-01-L</b>	R1/8	9
<b>G53-□-02-L</b>	R1/4	11

### G63-10-01 to 02-L



Part no.	A	B
<b>G63-10-01-L</b>	R1/8	9
<b>G63-10-02-L</b>	R1/4	11



# Oil-free/External Parts Copper-free Pressure Gauge/With Limit Indicator

## G46E Series

RoHS



G46E-10-02M



G46E-10-02M-C

- Be sure to read the precautions on page 891 for selection and mounting.

### Standard Specifications

Model		G46E
<b>Type</b>		Back side thread
<b>Port size</b> <sup>(1)</sup>		R 1/8, R 1/4 (Option M: with M5 female thread)
<b>Fluid</b> <sup>(3)</sup>		Air
<b>Indication precision</b> <sup>(4)</sup>		±3% F.S. (Full span)
<b>Fluid contact part cleaning</b>		Wetted parts degrease washing
<b>Material</b>	<b>Case (Surface treatment)</b>	Rolled steel (Black melamine painted)
	<b>Clear cover (Surface treatment)</b>	Polycarbonate (Hard coated) Part no.: G46-00-00-2
	<b>Stud (Surface treatment)</b>	Brass (Electroless nickel plated)
	<b>Bourdon tube</b>	Brass <sup>(2)</sup>
<b>Weight (kg)</b>		0.08
<b>Attachment: With cover ring assembly</b>	<b>C</b>	Part no.: 1305104-1A
	<b>C2</b>	Part no.: 1305104-9A

Note 1) When mounting a pressure gauge, use caution not to tighten excessively. Excessive tightening will cause product failure. Use a pipe tape for sealing.

Note 2) Bourdon tube and internal movable parts (gear, etc.) are made of brass and are not electrolessly nickel plated. This is not an internally copper-free product.

Note 3) Avoid freezing as this may cause a malfunction.

Note 4) The guaranteed temperature range is 23°C ±5°C.

### Model (Standard)

Model	Pressure range <sup>(1)</sup>		Indication unit	Connection thread	Note
	MPa	psi			
G46E-2-01 to 02M	0 to 0.2	—	MPa	R 1/8 R 1/4 M5 (Female thread)	—
G46E-4-01 to 02M	0 to 0.4	—			
G46E-7-01 to 02M	0 to 0.7	—			
G46E-10-01 to 02M	0 to 1.0	—			

Note 1) Do not apply pressure more than the maximum display pressure. This will cause a malfunction.

### Model (Made to Order)

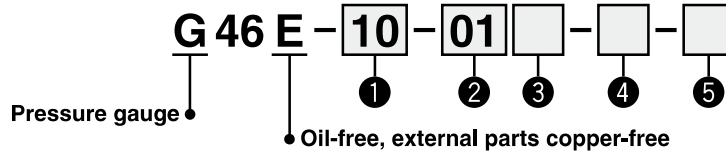
Other versions of this unit can be made on a Made-to-Order basis. Please consult SMC for details, as delivery times may be extended.

Model	Pressure range <sup>(1)</sup>		Indication unit	Connection thread	Note
	MPa	psi			
G46E-2-02M-C/C2	0 to 0.2	—	MPa	R 1/8 R 1/4 M5 (Female thread)	With cover ring assembly
G46E-4-02M-C/C2	0 to 0.4	—			
G46E-7-02M-C/C2	0 to 0.7	—			
G46E-10-02M-C/C2	0 to 1.0	—			
G46E-P2-01 to 02M-C/C2-X30 <sup>(2)</sup>	0 to 0.2	0 to 30	MPa, psi	R 1/4 M5 (Female thread)	
G46E-P10-01 to 02M-C/C2-X30 <sup>(2)</sup>	0 to 1.0	0 to 150		R 1/8, 1/4 M5 (Female thread)	

Note 1) Do not apply pressure more than the maximum display pressure. This will cause a malfunction.

Note 2) Under the New Measurement Law, products for overseas use only (SI unit type for use in Japan)

How to Order



	Symbol	Description	G46E
		+	
① Max. display pressure	2	0.2 MPa	●
	4	0.4 MPa	●
	7	0.7 MPa	●
	10	1.0 MPa	●
	15	1.5 MPa	●
	P2 <sup>(1)</sup>	0.2 MPa, 30 psi	○ <sup>(2)</sup>
	P7 <sup>(1)</sup>	0.7 MPa, 100 psi	○ <sup>(2)</sup>
		+	
② Connection thread	01	R 1/8	●
	02	R 1/4	●
		+	
③ Option	Nil	—	●
	M <sup>(3)</sup>	With M5 (Female thread)	●
		+	
④ Attachment	Nil	Without cover ring assembly	●
	C	Clear cover has no protrusion. (Clear cover is irremovable.)	●
	C2	Clear cover has protrusion. (Clear cover is removable.) The wrench flats protrude.	●
		+	
⑤ Special specification	Nil	—	●
	X30	Both MPa and psi	○ <sup>(2)</sup>

Note 1) This symbol must be used with Special specification "X30."

Note 2) Under the New Measurement Law, products for overseas use only (SI unit type for use in Japan)

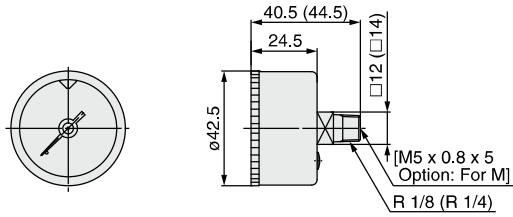
Note 3) To use the pressure gauge with M5 (female thread), attach the joint when piping the tube.





**Dimensions** \* The dimensions in ( ): Connection thread R 1/4

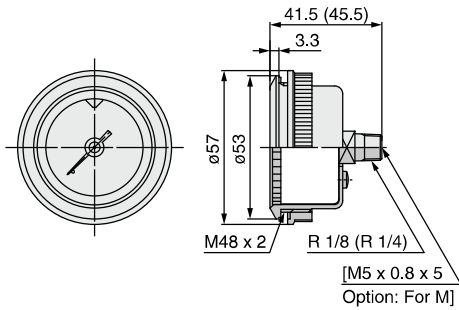
**G46E-□□-01 to 02 (M)**



**With cover ring assembly (For panel mount)**

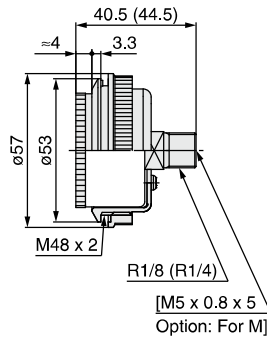
**G46E-□□-01 to 02 (M)-C**

Type C (Clear cover is not removable.)

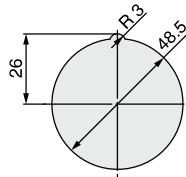


**G46E-□□-01 to 02 (M)-C2**

Type C2  
(Clear cover is removable. The wrench flats protrude.)



Panel fitting dimensions  
Plate thickness Max. 3.5 t



Refer to page 890 for mounting method.

# Pressure Gauge for Clean Series (10-series) **G49 Series**



- Be sure to read the precautions on page 891 for selection and mounting.

## Standard Specifications

Installation of a filter on the breathing hole (filtration 3 μm) enables an unit to curb particle generation from the pressure gauge inside.

Model		G49
<b>Type</b>		Back side thread
<b>Port size</b> <sup>(1)</sup>		R 1/8, R 1/4
<b>Fluid</b> <sup>(2) (4)</sup>		Air
<b>Indication precision</b> <sup>(5)</sup>		±3% F.S. (Full span)
<b>Material</b>	<b>Case (Surface treatment)</b>	Zinc die-casted (Chromate plated)
	<b>Clear cover</b>	Glass
	<b>Stud (Surface treatment)</b>	Brass (Nickel plated for external parts only)
	<b>Bourdon tube</b>	Brass <sup>(3)</sup>
<b>Weight (kg)</b>		0.095

Note 1) When mounting a pressure gauge, use caution not to tighten excessively. Excessive tightening will cause product failure. Use a pipe tape for sealing. Recommended tightening torque: R1/8: Set between 7 to 9 N·m, R1/4: 12 to 14 N·m respectively.

Note 2) When fluid is water, use G49-□-X3. Wetted parts of G49-□-X3 are made of Stainless steel. Use caution as some corrosion may be caused by water. Standard G49 pressure gauge contact area is made of brass. When using water, use caution not to apply water hammer. Similarly, when using other fluids, consult SMC for fluid compatibility information concerning corrosive potential.

Note 3) Bourdon tube and internal movable parts (gear, etc.) are made of brass, and are not nickel plated.

Note 4) Avoid freezing as this may cause a malfunction.

Note 5) The guaranteed temperature range is 23°C ±5°C.

## Model (Standard)

Model	Pressure range <sup>(1)</sup>		Indication unit	Connection thread	Note
	MPa				
G49-2-02	0 to 0.2		MPa	R 1/4	—
G49-7-02	0 to 0.7				
G49-10-02	0 to 1.0				

Note 1) Do not apply pressure more than the maximum display pressure. This will cause a malfunction.

## Model (Made to Order)

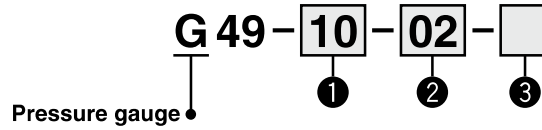
Other versions of this unit can be made on a Made-to-Order basis. Please consult with SMC for details, as delivery times may be extended.

Model	Pressure range <sup>(1)</sup>		Indication unit	Connection thread	Note
	MPa	psi			
G49-P2-02-X30 <sup>(2)</sup>	0 to 0.2	0 to 30	MPa, psi	R 1/4	—
G49-P10-02-X30 <sup>(2)</sup>	0 to 1.0	0 to 150			

Note 1) Do not apply pressure more than the maximum display pressure. This will cause a malfunction.

Note 2) Under the New Measurement Law, products for overseas use only (SI unit type for use in Japan)

**How to Order**



		Symbol	Description	G49
		+		
①	Max. display pressure	2	0.2 MPa	●
		4	0.4 MPa	●
		7	0.7 MPa	●
		10	1.0 MPa	●
		P2 <sup>(1)</sup>	0.2 MPa, 30 psi	○ <sup>(2)</sup>
		P10 <sup>(1)</sup>	1.0 MPa, 150 psi	○ <sup>(2)</sup>
		+		
②	Connection thread	01	R 1/8	●
		02	R 1/4	●
		+		
③	Special specification	Nil	—	●
		X3 <sup>(3)</sup>	Wetted parts stainless steel	●
		X30	Both MPa and psi	○ <sup>(2)</sup>

Note 1) This symbol must be used with Special specification "X30."

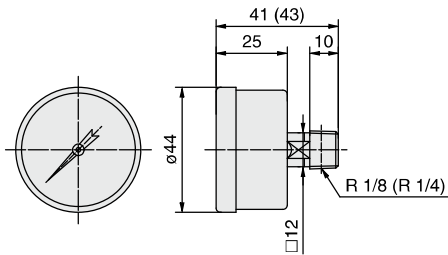
Note 2) Under the New Measurement Law, products for overseas use only (SI unit type for use in Japan)

Note 3) Movable parts (gear, etc.) inside pressure gauge are made of brass. In addition, this specification is only available for connection thread "02".

Note 4) Cover ring assembly is not available.

**Dimensions** \* The dimensions in ( ): Connection thread R 1/4

**G49-□-01 to 02**





# Pressure Gauge for Clean Regulator/ With Limit Indicator

# G46-SRA/B Series RoHS



G46-10-02-SRA,B

- Be sure to read the precautions on page 891 for selection and mounting.

## Standard Specifications

Model		G46-□-SRA	G46-□-SRB
<b>Type</b>		Back side thread	
<b>Port size</b> <sup>(1)</sup>		R 1/8, R 1/4	
<b>Fluid</b> <sup>(4)</sup>		Air, Water	Air, Water
<b>Indication precision</b> <sup>(5)</sup>		±3% F.S. (Full span)	
<b>Fluid contact part cleaning (Wetted part)</b>		Precision cleaning	General degreasing
<b>Assembly/environment</b>		Clean room M5.5 (Class 10000)	General production line
<b>Oil/Water free</b>		Oil/Water-free <sup>(2)</sup>	
<b>Material</b> <sup>(3)</sup>	<b>Case</b>	Stainless steel 304 (Black melamine painted)	
	<b>Clear cover (Surface treatment)</b>	Polycarbonate (Hard coated) Part no.: G46-00-00-2	
	<b>Stud</b>	Stainless steel 316	
	<b>Bourdon tube</b>	Stainless steel 316	
<b>Attachment: cover ring assembly</b>	<b>C</b>	Part no.: 1305104-6A	
	<b>C2</b>	Part no.: 1305104-12A	
<b>Packaging</b>		<ul style="list-style-type: none"> <li>• Polyethylene cap for stud parts.</li> <li>• Airtight polyethylene bag</li> </ul>	<ul style="list-style-type: none"> <li>• Polyethylene cap for stud parts.</li> <li>• Polyethylene bag</li> </ul>
<b>Weight (kg)</b>		0.085	0.085

Note 1) When mounting a pressure gauge, use caution not to tighten excessively. Excessive tightening will cause product failure. Use a pipe tape for sealing.

Note 2) When manufacturing pressure gauge, SMC uses caution not to allow water to remain in the wetted parts.

Note 3) Movable parts (gear, etc) inside pressure gauge are made of brass.

Note 4) Excludes corrosive fluids. Be sure to avoid freezing as this may cause a malfunction.

Also, if using water as the fluid, make sure that water hammer is not being applied.

Note 5) The guaranteed temperature range is 23°C ±5°C.

## Model (Standard)

Model	Pressure range <sup>(1)</sup>		Indication unit	Connection thread	Note
	MPa	psi			
G46-2-01 to 02-SRA	0 to 0.2		MPa	R 1/8 R 1/4	—
G46-2-01 to 02-SRB					
G46-4-01 to 02-SRA	0 to 0.4				
G46-4-01 to 02-SRB					
G46-7-02-SRA	0 to 0.7			R 1/4	
G46-7-02-SRB					
G46-10-02-SRA			0 to 1.0		
G46-10-02-SRB					

Note 1) Do not apply pressure more than the maximum display pressure. This will cause a malfunction.

## Model (Made to Order)

Other versions of this unit can be made on a Made-to-Order basis.

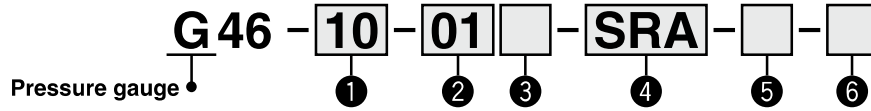
Please consult with SMC for details, as delivery times may be extended.

Model	Pressure range <sup>(1)</sup>		Indication unit	Connection thread	Note
	MPa	psi			
G46-P10-01 to 02-SRB-X30 <sup>(2)</sup>	0 to 1.0	0 to 150	MPa, psi	R 1/8, 1/4	—

Note 1) Do not apply pressure more than the maximum display pressure. This will cause a malfunction.

Note 2) Under the New Measurement Law, products for overseas use only (SI unit type for use in Japan)

How to Order



	Symbol	Description	G46
	+		
① Max. display pressure	<b>2</b>	0.2 MPa	●
	<b>4</b>	0.4 MPa	●
	<b>7</b>	0.7 MPa	●
	<b>10</b>	1.0 MPa	●
	<b>P2</b> <sup>(1)</sup>	0.2 MPa, 30 psi	○ <sup>(2)</sup>
	<b>P10</b> <sup>(1)</sup>	1.0 MPa, 150 psi	○ <sup>(2)</sup>
	+		
② Connection thread	<b>01</b>	R 1/8	●
	<b>02</b>	R 1/4	●
	+		
③ Option	<b>Nil</b>	—	●
	<b>M</b> <sup>(3)</sup>	With M5 (Female thread)	●
	+		
④ Grade	<b>SRA</b>	Component parts: Precision cleaning Assembly: Clean room M5.5 (Class 10000)	●
	<b>SRB</b>	Component parts: General degreasing Assembly: General production line	●
	+		
⑤ Attachment	<b>Nil</b>	Without cover ring assembly	●
	<b>C</b>	Clear cover has no protrusion. (Clear cover is irremovable.)	●
	<b>C2</b>	Clear cover has protrusion. (Clear cover is removable.) The wrench flats protrude.	●
	+		
⑥ Special specification	<b>Nil</b>	—	●
	<b>X30</b>	Both MPa and psi	○ <sup>(2)</sup>

Note 1) This symbol must be used with Special specification "X30."

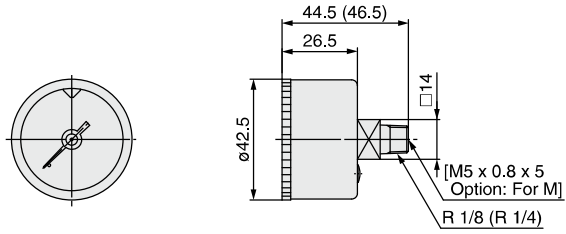
Note 2) Under the New Measurement Law, products for overseas use only (SI unit type for use in Japan)

Note 3) To use the pressure gauge with M5 (female thread), attach the joint when piping the tube.  
For combinations with the special specification products, please consult SMC separately.



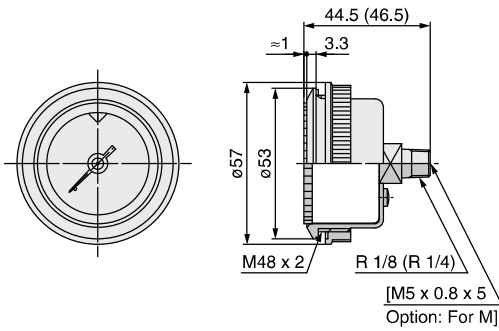
**Dimensions** \* The dimensions in ( ): Connection thread R 1/4

**G46-□□-01 to 02 (M)-SRA/SRB**



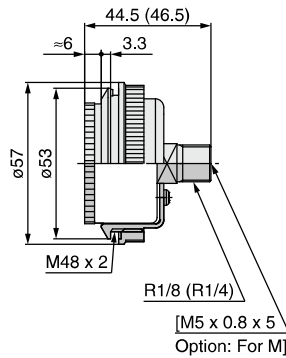
**With cover ring assembly (For panel mount)**

**G46-□□-01 to 02 (M)-SRA/SRB-C**  
Type C (Clear cover is not removable.)

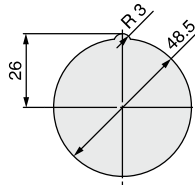


**G46-□□-01 to 02 (M)-SRA/SRB-C2**

Type C2  
(Clear cover is removable. The wrench flats protrude.)



**Panel fitting dimensions**  
Plate thickness Max. 3.5 t



# Pressure Gauge with Switch

## GP46 Series

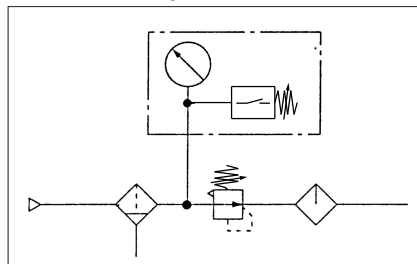


RoHS



- A pressure switch function has been added to the gauge.
- The pressure switch is equipped with a light for verifying operation.
- The pressure gauge is equipped with a limit indicator.
- To be used for verifying the supply pressure.

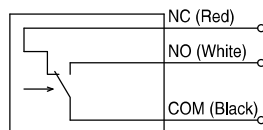
### Circuit Example



- Be sure to read the precautions for selection and mounting.

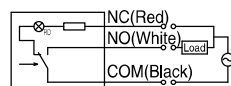
### Circuit Diagram

#### Without indicator light

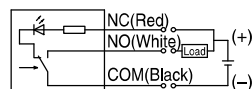


#### With indicator light

110, 220 VAC



24 VDC



The arrow in the diagram indicates the direction of the pressure increase. The light turns OFF when the pressure becomes higher than the set pressure and turns ON when the pressure becomes lower than the set pressure.

### Standard Specifications

Model		GP46	
Gauge	Type	Back side thread	
	Ambient and fluid temperature	-5 to 60°C (No freezing)	
	Indicated pressure rang	0 to 1.0 MPa	
	Port size <sup>(1)</sup>	R 1/8, R 1/4 (Option M: with M5 female thread)	
	Fluid <sup>(2) (6)</sup>	Air	
Pressure switch	Indication precision <sup>(7)</sup>	±0.03 MPa	
	Setting range <sup>(3) (4)</sup>	0.1 to 0.8 MPa	
	Hysteresis	0.07 MPa	
	Pointer error <sup>(5)</sup>	±0.05 MPa (5 to 40°C) ±0.08 MPa (-5 to 60°C) No freezing	
	Contact	With light: 1a (Normally open) Without light: 1ab (Normally open/ Normally closed)	
	Wiring	Lead wire (Length: 300 mm)	
	Indicator light	AC	Neon light
		DC	Light emitting diode (LED)
Clear cover		Part no.: G46-00-00-3	
Attachment:		C	
With cover ring assembly		C2	
Weight (kg)		0.12	

Note 1) When mounting a pressure gauge, use caution not to tighten excessively. Excessive tightening will cause product to be damaged. Use a pipe tape for sealing.

Note 2) Water is not an acceptable fluid. When using the other fluids, please consult with SMC for compatibility information concerning corrosion.

Note 3) Set value of pressure switch is indicated by pointer (green). It is the point where the circuit between N.O. (white) and COM (black) is turned off during pressure decrease. To set the value, turn needle in clockwise position to the correct value. When setting; if desired set position has been passed, turn needle in a counterclockwise direction back again beyond the desired value and then once again return needle in a clockwise direction stopping at the desired value. Value must be set while needle is traveling in a clockwise direction.

Note 4) Make sure to provide a minimum difference of 0.1 MPa between the set pressure and the operating pressure (including the pressure drop). If the difference is smaller, it could lead to improper operation. Refer to page 890 for details on how to set the setting needle. Use caution: Operating pressure should be the sum of the pressure of the setting needle error (±0.03 MPa), the hysteresis (0.07 MPa), and the display accuracy (±0.05 MPa) on the set pressure value, or the circuit between N.O. (white) and COM (black) may not turn ON while pressure is increasing.

Note 5) Maximum error value: Add the pressure gauge indicator error of 0.03 MPa to the setting needle error.

Note 6) Avoid freezing as this may cause a malfunction.

Note 7) The guaranteed temperature range is 23°C ±5°C.

### Model (Standard)

Model	Pressure range <sup>(1)</sup>	Indication unit	Connection thread	Note
	MPa			
GP46-10-01 to 02 (-Q)	0 to 1.0	MPa	R 1/8 R 1/4	—
GP46-10-01 to 02L2				
GP46-10-01 to 02L5 (-Q)				

Note 1) Do not apply pressure more than the maximum display pressure. This will cause a malfunction.

### Model (Made to Order)

Other versions of this unit can be made on a Made-to-Order basis. Please consult with SMC for details, as delivery times may be extended.

Model	Pressure range <sup>(1)</sup>		Indication unit	Connection thread	Note
	MPa	psi			
GP46-10-01 to 02-X201	0 to 1.0	—	MPa	R 1/8 R 1/4	Lead wire length 3 m
GP46-10-01 to 02L2-X201					
GP46-10-01 to 02L5-X201					
GP46-P10-01 to 02-X30 <sup>(2)</sup>	0 to 1.0	0 to 140	MPa, psi		—
GP46-P10-01 to 02L5-X30 <sup>(2)</sup>					

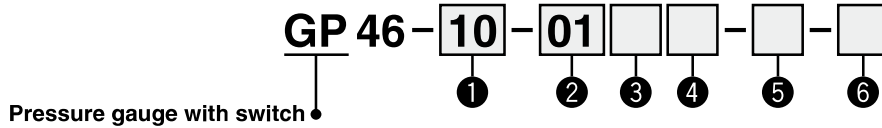
Note 1) Do not apply pressure more than the maximum display pressure. This will cause a malfunction.

Note 2) Under the New Measurement Law, products for overseas use only (SI unit type for use in Japan)

### Micro-switch Rated Voltage

Load	Load resistant		
Rated voltage	30 VDC	125 VAC	250 VAC
Operating current range	0.01 to 0.5 A	0.01 to 0.3 A	0.01 to 0.2 A

### How to Order



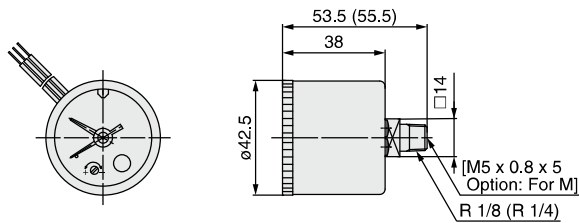
	Symbol	Description	GP46
	+		
① Max. display pressure	<b>10</b>	1.0 MPa	●
	<b>P10</b> <sup>(1)</sup>	1.0 MPa, 150 psi	○ <sup>(2)</sup>
	+		
② Connection thread	<b>01</b>	R 1/8	●
	<b>02</b>	R 1/4	●
	+		
③ Option	<b>Nil</b>	—	●
	<b>M</b> <sup>(3)</sup>	With M5 (Female thread)	●
	+		
④ Suffix for indicator light <sup>Note 4)</sup>	<b>Nil</b>	Without indicator light	●
	<b>L2</b>	Neon light (100 VAC/220 VAC)	●
	<b>L5</b>	LED/24 VDC	●
	+		
⑤ Attachment <sup>Note 5)</sup>	<b>Nil</b>	Without cover ring assembly	●
	<b>C</b>	Clear cover has no protrusion. (Clear cover is irremovable.)	●
	<b>C2</b>	Clear cover has protrusion. (Clear cover is removable.) The wrench flats protrude.	●
	+		
⑥ Special specification	<b>Nil</b>	—	●
	<b>X30</b>	Both MPa and psi	○ <sup>(2)</sup>
	<b>X201</b>	Lead wire length 3 m	●
	<b>Q</b> <sup>(6)</sup>	Compliant with CE marking	●

Note 1) This symbol must be used with Special specification "X30."  
 Note 2) Under the New Measurement Law, products for overseas use only (SI unit type for use in Japan)  
 Note 3) To use the pressure gauge with M5 (female thread), attach the joint when piping the tube. For combinations with the special specification products, please consult SMC separately.  
 Note 4) Please consult with SMC for X30. 220 VAC is not available for -Q.  
 Note 5) For pressure gauges with the cover ring assembly, it is recommended to select the option M so as to perform the piping.  
 Note 6) The rated micro switch for CE marked products is under the following conditions.

Load	Load resistant	
Rated voltage	30 VDC	125 VAC
Operating current range	0.01 to 0.5 A	0.01 to 0.3 A

### Dimensions (-Q: With ground terminal on back side) \* The dimensions in ( ): Connection thread R 1/4

#### GP46-10-01 to 02 (M) (L2,5)

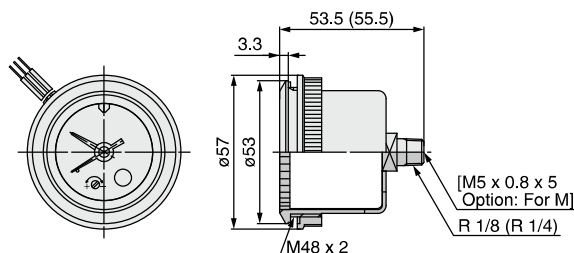


\* The dimensions in ( ): Connection thread R 1/4

#### With cover ring assembly (For panel mount)

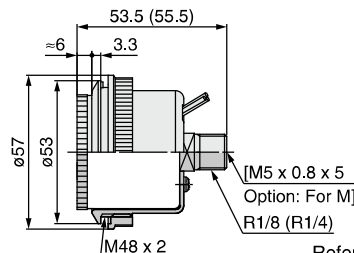
#### GP46-10-01 to 02 (M) (L2,5)-C

Type C (Clear cover is not removable.)

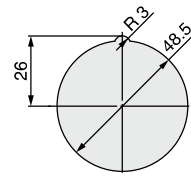


#### GP46-10-01 to 02 (M) (L2,5)-C2

Type C2 (Clear cover is removable. The wrench flats protrude.)



Panel fitting dimensions  
Plate thickness Max. 3.5 t



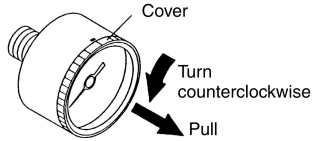
Refer to page 890 for mounting method.

# Pressure Gauge Guide

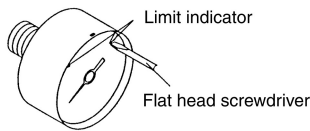
## Procedures for Setting and Assembling

### Procedure for Setting the Limit Gauge Indicator

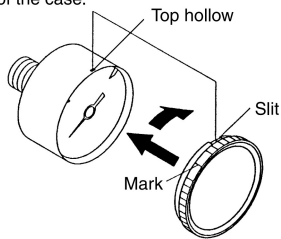
- (1) Before setting the (green) limit indicator, turn the cover counterclockwise (approximately 6 to 7 mm) until it stops. Then, remove by pulling it towards you.



- (2) Use a flat head screwdriver (with a 2.9 mm blade width) to set the (green) limit indicator. Be careful not to bend the other needle or damage the dial plate.

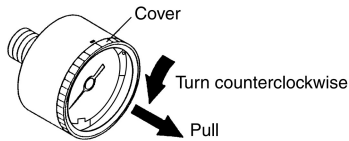


- (3) After completing the setting, replace the cover. Fit the cover by aligning the cutout in the cover to the groove on the top of the black case. Turn the cover clockwise (approximately 6 to 7 mm) until it stops. Make sure that the matching mark on the cover is aligned with the groove on the top of the case.

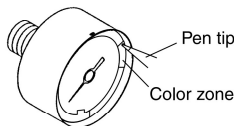


### Procedure for Setting the Limit Gauge Indicator (Color Zone Type)

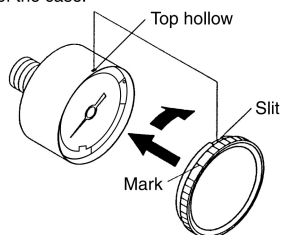
- (1) Before setting the color zone (red), turn the cover counterclockwise (approximately 6 to 7 mm) until it stops. Then remove by pulling it towards you.



- (2) Use a pen tip to set the color zone (red). Be careful not to bend the other needle or damage the dial plate.

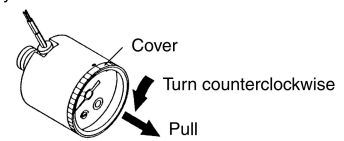


- (3) After completing the setting, replace the cover. Fit the cover by aligning the cutout in the cover to the groove on the top of the black case. Turn the cover clockwise (approximately 6 to 7 mm) until it stops. Make sure that the matching mark on the cover is aligned with the groove on the top of the case.

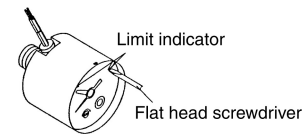


### Procedure for Setting the Limit Gauge Indicator and the Setting Needle

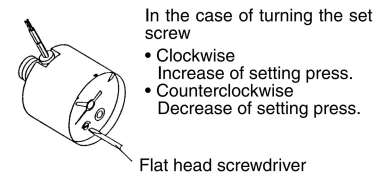
- (1) Before setting the limit indicator and the (green) setting needle, turn the cover counterclockwise (approximately 6 to 7 mm) until it stops. Then, remove by pulling it towards you.



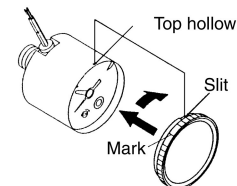
- (2) Use a flat head screwdriver (with a 2.9 mm blade width) to set the (green) limit indicator. Be careful not to bend the other needle or damage the dial plate.



- (3) Before setting the setting needle, use a flat head screwdriver (with a 2.9 mm blade width) to turn the setting screw and set the setting needle to the set pressure.

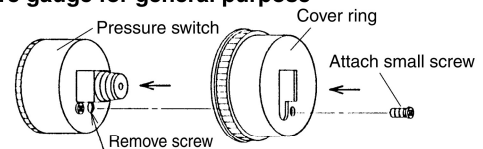


- (4) After completing the setting, replace the cover. Fit the cover by aligning the cutout in the cover to the groove on the top of the black case. Turn the cover clockwise (approximately 6 to 7 mm) until it stops. Make sure that the matching mark on the cover is aligned with the groove on the top of the case.

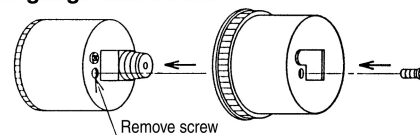


### Procedure for Assembling the Cover Ring Assembly

#### ● Pressure gauge for general purpose



#### ● Pressure gauge with switch



1. Remove the small screw (1 position) from the pressure gauge.
2. Place the cover ring on the pressure gauge.
3. Using the small screw that is provided with the cover ring, install the cover ring. The installation torque is 0.3 to 0.5 N·m.



# Pressure Gauge Guide Specific Product Precautions

Be sure to read this before handling the products.  
Refer to back page 50 for safety instructions.

## Selection

### Caution

1. Do not apply high load voltage (current) or surge current as this can cause the switch to malfunction.
2. Make sure that no direct impact or vibrations are applied to the body.
3. If operating under pressure pulsations or in high frequency operations, please contact SMC.

## Mounting

### Caution

1. During transport and installation, do not apply shock to the product, such as by dropping doing so will affect its precision.
2. Regarding the installation posture, place it perpendicular to the ground, with the zero point on the reading of a pressure gauge facing down.
3. Do not install it in an area that is exposed to high temperature or humidity, because doing so will lead to improper operation.
4. To screw in the pressure gauge, make sure to turn the gauge by placing a wrench over the square wrench flats.

If the pressure gauge is screwed in by holding it on some other area, air leakage or damage may result.

G

GS

PPA