



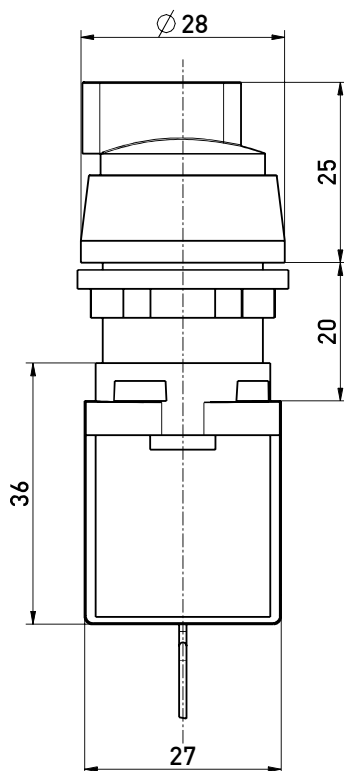
## Wireless command device RF BF 74 RWA 0-I SW915 Material number: 1329199

### Features/Options:

- sWave® wireless technology
- No power supply, no wiring and pipe laying required
- Easy programming of receiver
- Output signal can be individually configured at the receiver

- Actuator: Selector RWA with rest position
- Degree of protection IP 65
- Actuator made of plastic

### Dimensions



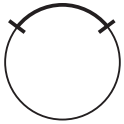
### Technical data

Standards	EN 60947-5-1; EN 61000-6-2, -6-3; EN 61000-4-2, -4-20; EN 301 489-1; EN 301 489-3; EN 300 220-1; EN 300 220-2
Enclosure	glass-fibre reinforced, shock-proof thermoplastic (PA 66), self-extinguishing UL 94-V0
Degree of protection	Use only with enclosure for command devices
Protocol	sWave®
Ambient temperature	-20 °C ... +65 °C
Operation cycles	approx. 12000 telegrams at repetitions/h
Voltage supply	Electrodynamic energy generator
Frequency	915 MHz (USA, Canada and Mexico)
Transmission power	< 10 mW
Data rate	66 kbps
Channel bandwidth	550 kHz
Wireless range	max. 450 m outside, max. 40 m inside
Mechanical life	800 000 operations
Actuating time	min. 80 ms
Actuating speed V	min. 0.03 m/s; max. 0.25 m/s
Actuating force	17 N
Note	no status signal available
Approvals	USA: FCC - XK5-RF95SW915LR; Canada: IC - 5158A-RF95SW915LR Mexico: IFT - RCPSTRF17-1884



Wireless command device  
RF BF 74 RWA 0-I SW915  
Material number: 1329199

Switching position RWA



2 switching positions  
Switching angle 90°  
0 - I