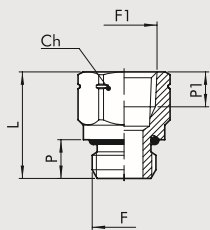


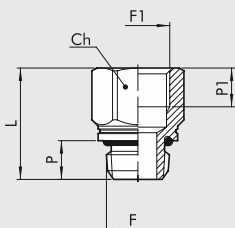
# FITTINGS SERIES A

## AU5/G - NPT FEMALE BSP MALE ADAPTORS



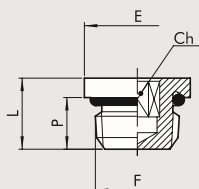
Code	Ref	F	F1	Ch		P	P1	L
				Inc	mm			
2105100U	AU5/G	M5	10/32 UNF	5/16	8	0.16	0.18	0.46
2105101U	AU5/G	BSP 1/8	1/8 NPT	0.551	14	0.24	0.28	0.73
2105103U	AU5/G	BSP 1/4	1/4 NPT	0.669	17	0.31	0.28	0.87
2105105U	AU5/G	BSP 3/8	3/8 NPT	0.866	22	0.35	0.37	1.03
2105107U	AU5/G	BSP 1/2	1/2 NPT	0.984	25	0.43	0.37	1.16

## AU5/N - NPT MALE BSP FEMALE ADAPTORS



Code	Ref	F	F1	Ch		P	P1	L
				Inc	mm			
2105200U	AU5/N	10/32 UNF	M5	5/16	8	0.16	0.18	0.46
2105201U	AU5/N	1/8 NPT	BSP 1/8	0.551	14	0.24	0.26	0.73
2105203U	AU5/N	1/4 NPT	BSP 1/4	0.669	17	0.31	0.31	0.91
2105205U	AU5/N	3/8 NPT	BSP 3/8	0.866	22	0.35	0.39	1.05
2105207U	AU5/N	1/2 NPT	BSP 1/2	0.984	25	0.43	0.43	1.23

## AU7 - BLANKING PLUGS



Code	Ref	F	Inc	Ch		P	L	E
				mm				
2107000U	AU7	10/32 UNF	0.079	2		0.16	0.26	0.31
2107001U	AU7	1/8 NPT	0.118	3		0.24	0.33	0.51
2107002U	AU7	1/4 NPT	0.236	6		0.31	0.43	0.65
2107003U	AU7	3/8 NPT	5/16	8		0.35	0.49	0.79
2107004U	AU7	1/2 NPT	0.394	10		0.43	0.57	0.96

## IDENTIFICATION MARK FOR AU5

An identification mark near the NPT thread is used to distinguish it from the BSP thread.

