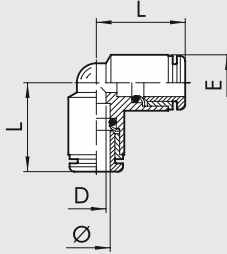
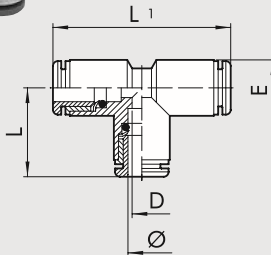


RU4 - UNION ELBOWS



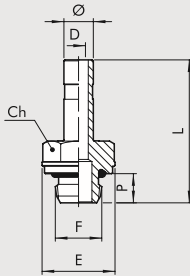
Code	Ref.	Ø	L	D	E
2004A01	R4	1/8	0.41	0.08	0.25
2L04001	RL4	5/32	0.63	0.10	0.37
2U04003	RU4	1/4	0.76	0.18	0.45
2L04004	RL4	5/16	0.81	0.26	0.53
2U04005	RU4	3/8	0.94	0.31	0.61
2U04006	RU4	1/2	1.07	0.43	0.81

RU5 - UNION TEES



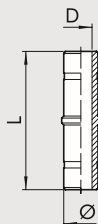
Code	Ref.	Ø	L	L1	D	E
2005A01	R5	1/8	0.41	0.82	0.08	0.25
2L05001	RL5	5/32	0.63	1.26	0.10	0.37
2U05003	RU5	1/4	0.76	1.52	0.18	0.45
2L05004	RL5	5/16	0.81	1.62	0.26	0.53
2U05005	RU5	3/8	0.94	1.88	0.31	0.61
2U05006	RU5	1/2	1.07	2.14	0.43	0.81

RU6 - STEM ADAPTORS



Code	Ref.	Ø	F	Ch		P	L	D	E
				Inc	mm				
2U06A01	RU6	1/8	10/32 UNF	0.197	5	0.14	0.73	0.08	0.23
2U06A02	RU6	1/8	1/8 NPT	0.472	12	0.24	0.89	0.08	0.51
2U06001	RU6	5/32	10/32 UNF	5/16	8	0.16	0.99	0.08	0.35
2U06002	RU6	5/32	1/8 NPT	0.472	12	0.24	1.09	0.10	0.51
2U06003	RU6	5/32	1/4 NPT	0.551	14	0.31	1.19	0.10	0.65
2U06000	RU6	1/4	10/32 UNF	5/16	8	0.16	1.01	0.08	0.35
2U06007	RU6	1/4	1/8 NPT	0.472	12	0.24	1.11	0.16	0.51
2U06008	RU6	1/4	1/4 NPT	0.551	14	0.31	1.20	0.16	0.65
2U06020	RU6	1/4	3/8 NPT	0.669	17	0.35	1.31	0.16	0.79
2U06009	RU6	5/16	1/8 NPT	0.472	12	0.24	1.15	0.22	0.51
2U06010	RU6	5/16	1/4 NPT	0.551	14	0.31	1.24	0.24	0.65
2U06011	RU6	5/16	3/8 NPT	0.669	17	0.35	1.35	0.24	0.79
2U06012	RU6	3/8	1/4 NPT	0.551	14	0.31	1.37	0.29	0.65
2U06013	RU6	3/8	3/8 NPT	0.669	17	0.35	1.48	0.29	0.79
2U06022	RU6	3/8	1/2 NPT	0.748	19	0.43	1.62	0.29	0.96
2U06014	RU6	1/2	3/8 NPT	0.669	17	0.35	1.55	0.41	0.79
2U06015	RU6	1/2	1/2 NPT	0.748	19	0.43	1.72	0.41	0.96

RU7 - STRAIGHT CONNECTORS



Code	Ref.	Ø	L	D
2007001	R7	5/32	1.34	0.08
2U07003	RU7	1/4	1.40	0.16
2L07004	RL7	5/16	1.48	0.24
2U07005	RU7	3/8	1.73	0.29
2U07006	RU7	1/2	2	0.41