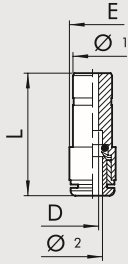
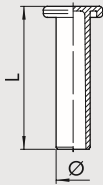


RU8 - PLUG IN REDUCERS



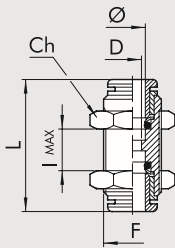
Code	Ref.	Ø 1	Ø 2	L	D	E
2008A02	R8	5/32	1/8	1.02	0.08	0.25
2U08002	RU8	1/4	5/32	1.18	0.10	0.39
2L08004	RL8	5/16	5/32	1.10	0.10	0.37
2U08006	RU8	5/16	1/4	1.27	0.18	0.46
2U08007	RU8	3/8	1/4	1.40	0.20	0.46
2U08010	RU8	1/2	1/4	1.54	0.20	0.51
2U08011	RU8	1/2	5/16	1.41	0.28	0.57
2U08015	RU8	1/2	3/8	1.63	0.31	0.63

RU9 BLANKING PLUGS IN PLASTIC



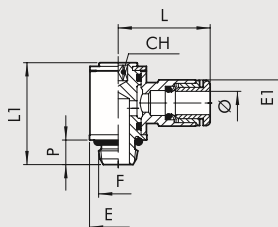
Code	Rif.	Ø	L
2L10A01	RL9T	1/8	0.77
2L10001	RL9T	5/32	1.06
2U10003	RU9	1/4	1.17
2L10004	RL9T	5/16	1.32
2U10005	RU9	3/8	1.45
2L10A01	RU9	1/2	1.54

RU10 - BULKHEAD UNIONS



Code	Ref	Ø	F	Ch		L	D	lmax
				Inc	mm			
2011A01	R10	1/8	M8X0.75	0.394	10	0.72	0.08	0.20
2L11001	RL10	5/32	M11X1	0.512	13	1.13	0.10	0.43
2U11003	RU10	1/4	M13X1	5/8	16	1.32	0.18	0.47
2L11004	RL10	5/16	M15X1	0.669	17	1.33	0.26	0.53
2U11005	RU10	3/8	M17X1	0.787	20	1.58	0.31	0.67
2U11006	RU10	1/2	M22X1	0.984	25	1.7	0.39	0.74

RU15 - ROTARY FITTINGS SINGLE



Code	Ref	Ø	F	Ch		P	L	L1	E	E1
				Inc	mm					
2U14104	RU15	1/8	10/32 UNF	5/64	2	0.16	0.50	0.55	0.23	0.28
2U14001	RU15	5/32	10/32 UNF	5/64	2	0.16	0.76	0.74	0.31	0.37
2U14002	RU15	5/32	1/8 NPT	0.118	3	0.24	0.80	1.01	0.51	0.37
2U14106	RU15	1/4	10/32 UNF	5/64	2	0.16	0.94	0.74	0.31	0.46
2U14005	RU15	1/4	1/8 NPT	0.118	3	0.24	0.92	1.01	0.51	0.46
2U14007	RU15	1/4	1/4 NPT	5/32	4	0.31	0.98	1.17	0.65	0.46
2U14006	RU15	5/16	1/8 NPT	0.118	3	0.24	0.97	1.01	0.51	0.54
2U14008	RU15	5/16	1/4 NPT	5/32	4	0.31	1.03	1.17	0.65	0.54
2U14013	RU15	5/16	3/8 NPT	0.197	5	0.35	1.11	1.40	0.79	0.54
2U14009	RU15	3/8	1/4 NPT	5/32	4	0.31	1.25	1.17	0.65	0.65
2U14014	RU15	3/8	3/8 NPT	0.197	5	0.35	1.31	1.40	0.79	0.63
2U14011	RU15	1/2	3/8 NPT	0.197	5	0.35	1.44	1.4	0.79	0.79
2U14012	RU15	1/2	1/2 NPT	0.315	8	0.43	1.5	1.6	0.96	0.8