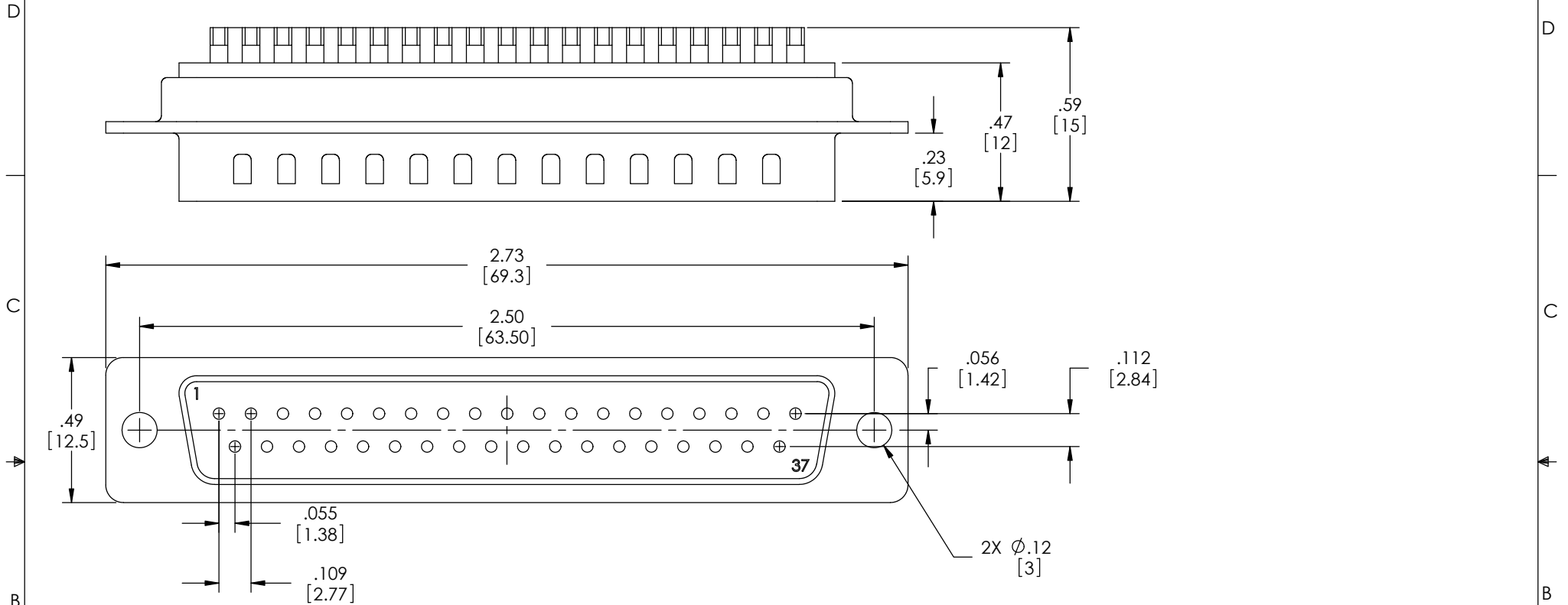


THE INFORMATION CONTAINED IN THIS DRAWING IS THE SOLE PROPERTY OF L-COM, INC. ANY REPRODUCTION IN PART OR WHOLE WITHOUT THE WRITTEN PERMISSION OF L-COM, INC. IS PROHIBITED.

REVISIONS			
REV	DESCRIPTION	DATE	APPROVED
A	INITIAL RELEASE	12/09/03	B.MAZEJKA
B	ECN 1682 - CHG'D COMP SPEC TABLE, GOLD FLASH PLATED	02/27/04	B.MAZEJKA
C	ECN#3680, ADDED PACKAGING TABLE AND UPDATED FORMAT	2008.10.30	E. STAUBLE
D	ECN 4944: ADDED FRONT & BACK SHELL FINISH, ADDED PKG NOTE, DEL. CURRENT RATING	8/3/10	D. CASTRO



NOTES:

MATERIAL:
 CONNECTOR SHELL: STEEL
 CONNECTOR INSULATOR: THERMOPLASTIC, UL94V-0 RATED
 CONTACTS: COPPER ALLOY

CATALOG #	PACKAGING
SD37P	1/BAG
SD37P-TRAY	40/TRAY

FINISH:
 FRONT SHELL: NICKEL PLATED
 BACK SHELL: TIN PLATED
 CONTACTS: GOLD FLASH IN CONTACT AREA OVER NICKEL PLATE
 SOLDER CUPS: TIN PLATED

ELECTRICAL:
 DIELECTRIC WITHSTANDING VOLTAGE: 1000 VAC rms
 INSULATION RESISTANCE: 5000MΩ @ 500VDC

MISCELLANEOUS:
 OPERATING TEMPERATURE: -55°C TO +105°C
 CONNECTOR SHALL BE PACKAGED IN ACCORDANCE WITH L-COM SPEC. PS-0031.

REGULATORY COMPLIANCE:
 CE2011/65/EU (RoHS DIRECTIVE)

UNLESS OTHERWISE SPECIFIED, DIMENSIONS ARE IN INCHES [mm] OVERALL CABLE LENGTH TOLERANCE: ≤12 [305] = +1 [25] / -0 >12 [305] ≤60 [1524] = +2 [51] / -0 >60 [1524] ≤120 [3048] = +4 [102] / -0 >120 [3048] ≤300 [7620] = +6 [152] / -0 >300 [7620] = +5% / -0% ALL OTHER DIMENSIONAL TOLERANCES: .X = ±.2 [5.08] .XX = ±.02 [1.51] .XXX = ±.005 [1.13]	APPROVALS	DATE
	DRAWN BY B.MAZEJKA	11/10/2003
	CHECKED BY C.McCORMICK	12/08/2003
	APPROVED BY D.PARHAM	12/08/2003
PROJECTION 	CONFIGURATION DETAILS OF UNDIMENSIONED FEATURES MAY VARY	
	COLOR VARIATIONS MAY OCCUR	

L-com Global Connectivity		45 BEECHWOOD DRIVE NORTH ANDOVER, MA 01845	
CATEGORY		D-SUBMINIATURE	
PRODUCT DESCRIPTION DB37M SOLDER CUP CONNECTOR			
SIZE A	FSCM NO. 43321	DWG. NO. SD37P	REV. D
SCALE: NONE		CAD FILE: SD37P.SLDDRW	
			SHEET 1 OF 1