

Datasheet

Stock No: 267-3997

ENGLISH

RS Pro Butt Wire Splice Connector, Red, Insulated 22 → 16 AWG

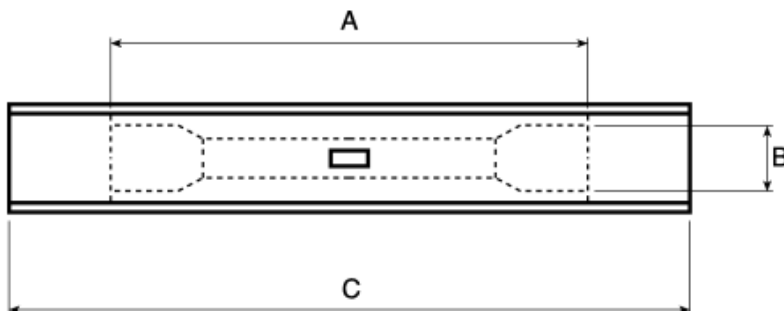


Product Details:

RS Pro Nylon Insulated Tubular Butt Splice

Nylon insulated tubular copper butt splices with a window or sight-hole. These insulated butt splices are colour coded for use with different wire ranges. For suitable crimp tool see stock number 267-3133.

- Red 0.5 - 1.5 mm²
- Blue 1 - 2.6 mm²
- Yellow 4.0 - 6.5 mm²



| Type | A | B | C |
|--------|------|-----|------|
| Red | 22.0 | 3.2 | 31.0 |
| Blue | 22.0 | 3.8 | 31.0 |
| Yellow | 29.0 | 5.5 | 41.0 |

Specifications:

| | |
|----------------------|-------------|
| Splice Type: | Butt |
| Wire Size: | 22 → 16 AWG |
| Overall Length: | 31mm |
| Diameter: | 4mm |
| Insulation: | Insulated |
| Colour: | Red |
| Insulation Material: | Nylon |
| Contact Material: | Copper |

| | |
|-----------------------------|-------------------|
| Temperature rating: | -55°C to 105°C |
| Terminal Material: | |
| Receptacles | High grade brass |
| Other terminals | High grade copper |
| Voltage rating | |
| Brass | 300V |
| Copper | 600V |
| Additional Sleeve Material: | High grade copper |

