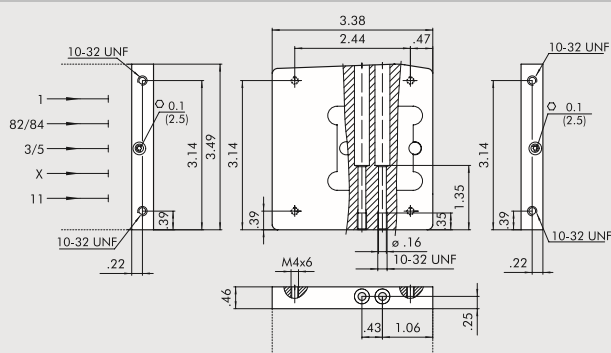


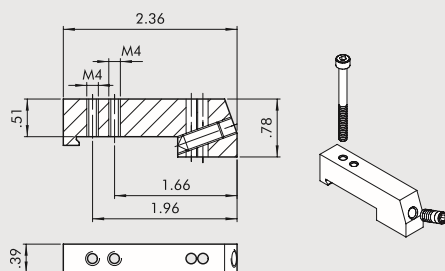
5 BLIND END-PLATE



Code	Description	Weight [lb]
0227301500	Blind end-plate HDM	0.507

ACCESSORIES

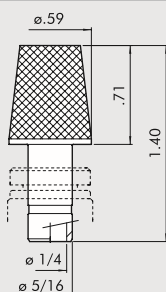
16 CONNECTION BRACKETS ON DIN BAR



Code	Description	Weight [lb]
0227301600	Connection brackets on din bar HDM/CM	0.066

Supplied complete with one M4x45 screws and one M6 grub screw
Individually packed

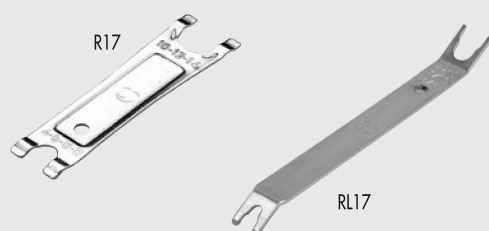
SILENCER FOR FITTING, Ø 5/16



Code	Description	Weight [lb]
W0970530084	Silencer for fitting, Ø 5/16	0.033

At the 3/5-exhaust port of the intermediate throughreference 6
and of the exhaust switch reference 20

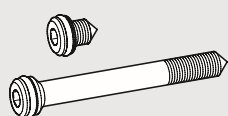
R17 - PIPE RELEASE SPANNER



Code	Rif.	Length [in]	Ø Tube
2L17001	RL17	5.51	from Ø 1/8 to Ø 3/8
2017001	R17	95	from Ø 5/32 to Ø 1/2

SPARES

GRUB SCREW KIT



Code	Description
0227301800	Grub screw for Multimach HDM/CM

Comes in 1 + 1 pc. packs