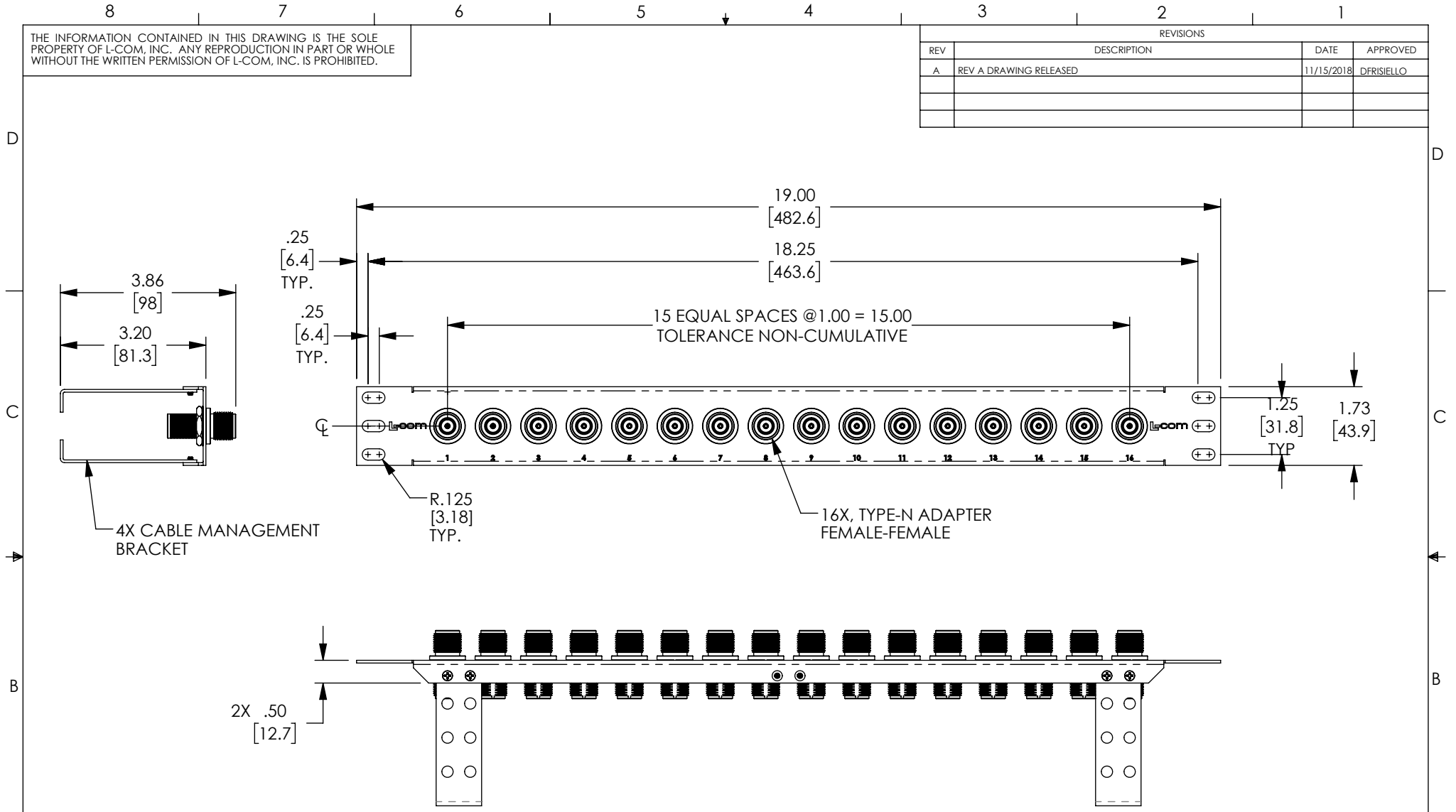


THE INFORMATION CONTAINED IN THIS DRAWING IS THE SOLE PROPERTY OF L-COM, INC. ANY REPRODUCTION IN PART OR WHOLE WITHOUT THE WRITTEN PERMISSION OF L-COM, INC. IS PROHIBITED.

REVISIONS			
REV	DESCRIPTION	DATE	APPROVED
A	REV A DRAWING RELEASED	11/15/2018	DFRISIELLO



- NOTES:
1. MATERIAL: .06 THICK COLD ROLLED STEEL.
  2. PANEL FINISH: FLAT BLACK POWDER COAT.
  3. SILKSCREEN COLOR: WHITE.
  4. PANEL SHALL BE PACKAGED IN ACCORDANCE WITH L-COM SPECIFICATION PS-0014.

UNLESS OTHERWISE SPECIFIED, DIMENSIONS ARE IN INCHES [mm] OVERALL CABLE LENGTH TOLERANCE: ≤12 [305] = +1 [25] / -0 >12 [305] ≤60 [1524] = +2 [51] / -0 >60 [1524] ≤120 [3048] = +4 [102] / -0 >120 [3048] ≤300 [7620] = +6 [152] / -0 >300 [7620] = +5% / -0% ALL OTHER DIMENSIONAL TOLERANCES: .X = ± .2 [5.08] .XX = ± .02 [5.1] .XXX = ±.005 [1.13]	APPROVALS DRAWN BY DFRISIELLO CHECKED BY MMARTINEZ APPROVED BY MMARTINEZ	DATE 11/08/2018 11/08/2018 11/08/2018	50 HIGH STREET NORTH ANDOVER, MA 01845	
	CONFIGURATION DETAILS OF UNDIMENSIONED FEATURES MAY VARY			CATEGORY <b>RACK PANELS</b>
	PROJECTION 	COLOR VARIATIONS MAY OCCUR	SIZE <b>A</b>	FSCM NO. <b>43321</b>
	DWG. NO. <b>PR175N16CMB</b>		SCALE: NONE	CAD FILE: PR175N16CMB.SLDDRW
SHEET 1 OF 1			REV. <b>A</b>	