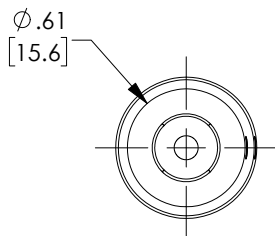
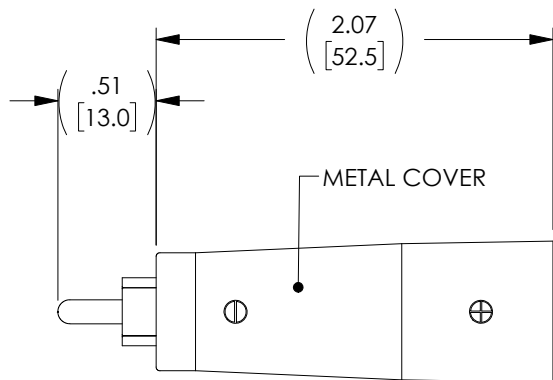


THE INFORMATION CONTAINED IN THIS DRAWING IS THE SOLE PROPERTY OF L-COM, INC. ANY REPRODUCTION IN PART OR WHOLE WITHOUT THE WRITTEN PERMISSION OF L-COM, INC. IS PROHIBITED.

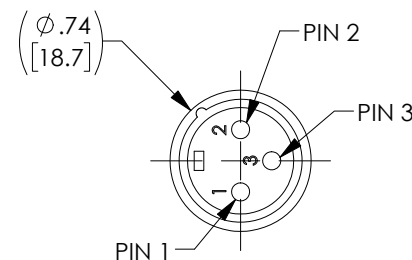
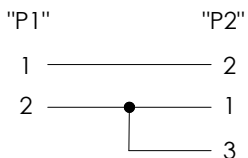
REVISIONS			
REV	DESCRIPTION	DATE	APPROVED
A	REV A DRAWING RELEASED	09/20/2018	DFRISIELLO



"P1"
RCA MALE
CONNECTOR



WIRING MAP



"P2"
XLR 3-PIN MALE
CONNECTOR

NOTES:

ELECTRICAL:

1. ADAPTER SHALL BE TESTED FOR CONTINUITY
2. VOLTAGE TEST: DC 300V 10MS
3. INSULATION RESISTANCE: 5.0M OHM/MIN.
4. CONDUCTOR RESISTANCE: 5.0 OHM/MAX.

PACKAGING:

1. ADAPTER SHALL BE INDIVIDUALLY PACKAGED IN ACCORDANCE WITH L-COM SPECIFICATION LSP-010-2.

REGULATORY COMPLIANCE:

CE2011/65/EU (RoHS DIRECTIVE)
UL CERTIFIED

UNLESS OTHERWISE SPECIFIED, DIMENSIONS ARE IN INCHES [mm] OVERALL CABLE LENGTH TOLERANCE: ≤12 [305] = +1 [25] / -0 >12 [305] ≤60 [1524] = +2 [51] / -0 >60 [1524] ≤120 [3048] = +4 [102] / -0 >120 [3048] ≤300 [7620] = +6 [152] / -0 >300 [7620] = +5% / -0%	APPROVALS	DATE			50 HIGH STREET NORTH ANDOVER, MA 01845	
	DRAWN BY DFRISIELLO	09/19/2018			CATEGORY	
ALL OTHER DIMENSIONAL TOLERANCES: .X = ± .2 [5.08] .XX = ± .02 [1.51] .XXX = ± .005 [1.13]	CHECKED BY ELAMOTT	09/20/2018	PRODUCT DESCRIPTION		XLR M to RCA M convertor	
	APPROVED BY BGATES	09/20/2018	SIZE A	FSCM NO. 43321	DWG. NO. VMC00001	REV. A
PROJECTION 	COLOR VARIATIONS MAY OCCUR		SCALE: NONE		CAD FILE: VMC00001.SLDDRW	SHEET 1 OF 1