

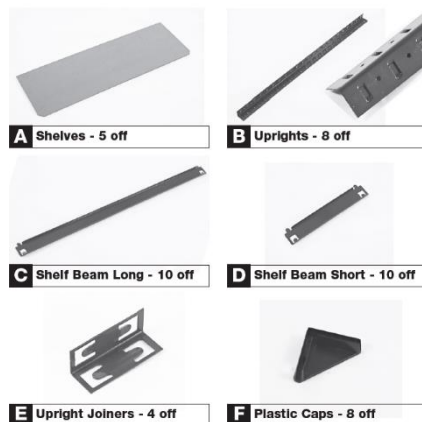


ENGLISH

Datasheet

RS Pro Starter Bay Shelving, 1800 mm x 900 mm x 450 mm

RS Stock No : 113-4512



Each boxed bay includes:

Features and Benefits:

Easy self-assembly

Steel frame

Particle board shelving

Interchange between full height or dual mid-height benches

Easy access to the stored items from all directions.

Load Capacity: 150 kg

Three bay sizes available (H x W xD)

1800 mm x 900 mm x 300 mm: stock no. 113-4511

1800 mm x 900 mm x 450 mm: stock no. 113-4512

1800 mm x 900 mm x 600 mm: stock no. 113-4513

UDSWL Per Shelf 150Kg

Attention: Never exceed the maximum shelf load of 150Kg