

## Data Surge Protector SPD TSJ Indoor Gigabit Ethernet/ PoE+ Shielded RJ45 GDT, UL 497B



### 1101-994 TSJ GbE PoE

#### Features

- Gigabit Ethernet/PoE+
- RJ-45 Connectivity
- Dedicated Ground Lug
- Wall Mount

#### Applications

- Gigabit Ethernet/PoE+ Networks
- Telecommunications Base Stations
- WISP/ISP
- IT & Data Centers
- Point-to-Point Links
- Control Lines and Sense Loops
- Oil & Gas

#### Description

Data surge protector (also known as SPD or lightning protector) 1101-994 from Transtector is an indoor style SPD that utilizes state of the art GDT technology to protect critical equipment in Gigabit Ethernet/PoE+ protocol data networks while remaining transparent to data throughput. This surge protector provides effective protection against electrical transient surges that are generated both by external lightning events and by internal switching events and supports long-term system reliability by absorbing high amounts of transient energy while maintaining a very low clamping voltage. Transtector Data Signal surge protectors are available in stock with same day shipping.

#### Electrical Specifications

Description	Minimum	Typical	Maximum	Units
Connectors		Shielded RJ45		
Compatible Cables		Cat5/5e UTP/STP, Cat6/6A STP		
Data Protocols		Gigabit Ethernet/PoE+		
Data Rate			1,000	Mb/s
Series Impedance (Data)			1	Ohms
Capacitance (Differential)			2	pF
Capacitance (Common)			2	pF
Power over Ethernet Protocols		PoE		
Vdc Rating (Data)		80	150	Vdc

#### Surge Protection Specification

Description	Minimum	Typical	Maximum	Units
Surge Protection Technology		GDT		

Click the following link (or enter part number in "SEARCH" on website) to obtain additional part information including price, inventory and certifications:  
[Data Surge Protector SPD TSJ Indoor Gigabit Ethernet/PoE+ Shielded RJ45 GDT, UL 497B 1101-994](#)

Data Surge Protector SPD TSJ Indoor Gigabit Ethernet/  
 PoE+ Shielded RJ45 GDT, UL 497B



**1101-994**  
 TSJ GbE PoE

Protected Pins	[1,2], [3,6], [4,5], [7,8]		
Protection Modes	L-G, L-L		
10/1000µs Surge Current			
L-G		1	kA
L-L		1	kA
8/20µs Surge Current			
L-G		20	kA
L-L		20	kA
Response Time		75	ns

**Mechanical Specifications**

**Size**

Height	2.2 in	[55.88 mm]
Width	3.16 in	[80.26 mm]
Depth	1.64 in	[41.66 mm]
Weight	0.2 lbs	[90.72 g]

**Environmental Specifications**

Operating Temperature	-40 to +85 deg C
Storage Temperature	-40 to +85 deg C

**Installation**

Mount Type	Wall
Grounding	1/4-20 Stud

**Compliance Certifications**

UL Compliant Certifications	Yes UL 497B
-----------------------------	----------------

Click the following link (or enter part number in "SEARCH" on website) to obtain additional part information including price, inventory and certifications:  
[Data Surge Protector SPD TSJ Indoor Gigabit Ethernet/PoE+ Shielded RJ45 GDT, UL 497B 1101-994](#)

Data Surge Protector SPD TSJ Indoor Gigabit Ethernet/  
PoE+ Shielded RJ45 GDT, UL 497B

**1101-994**  
TSJ GbE PoE



---

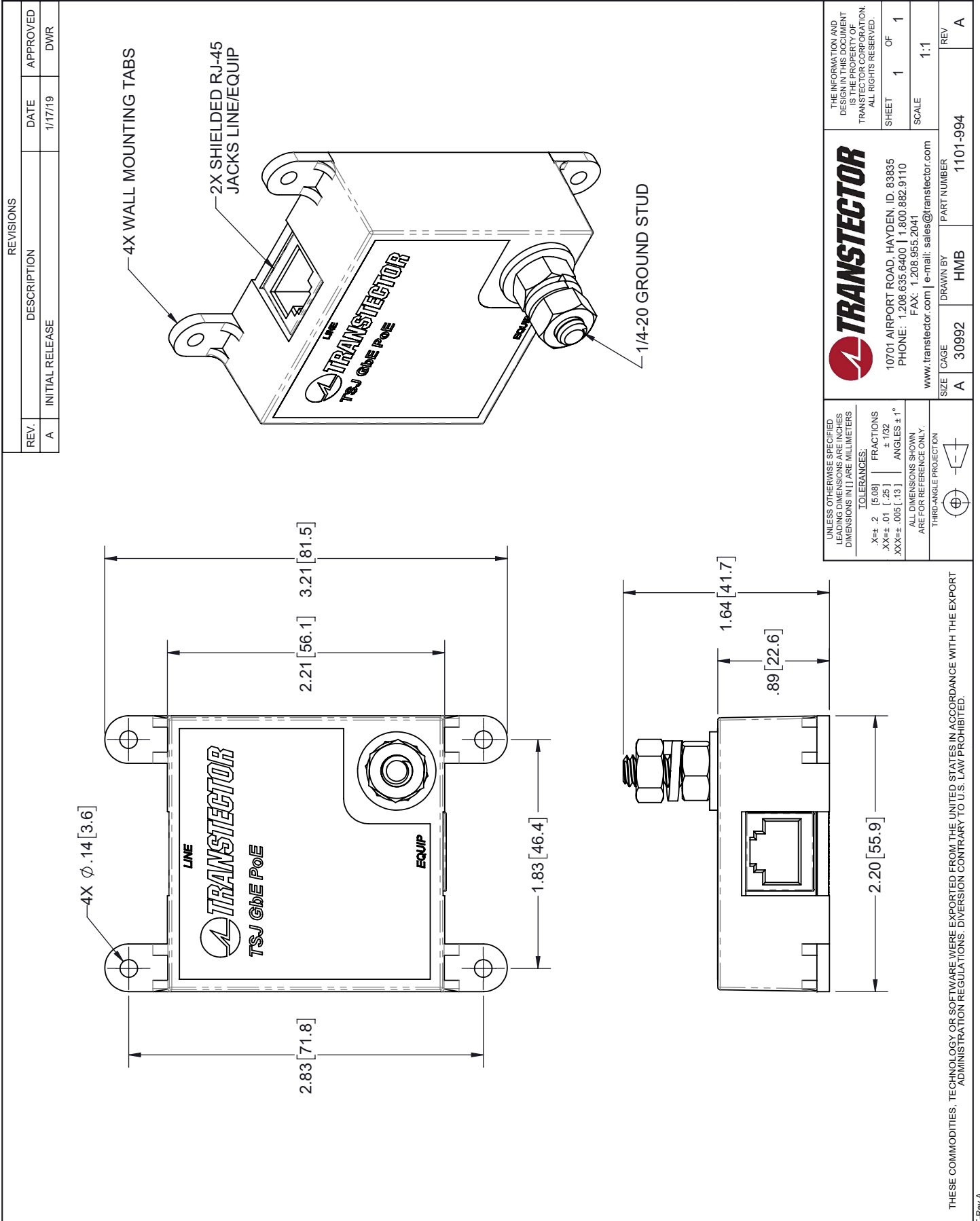
Transtector Systems specializes in protection of highly sensitive, low voltage equipment through its patented, non-degrading silicon diode technology and custom filters. Our power quality expertise translates into a diverse product offering including AC, DC, and signal applications as well as integrated cabinets, power distribution panels and EMP hardened devices.

Click the following link (or enter part number in "SEARCH" on website) to obtain additional part information including price, inventory and certifications: [Data Surge Protector SPD TSJ Indoor Gigabit Ethernet/PoE+ Shielded RJ45 GDT, UL 497B 1101-994](#)

URL: <https://www.transtector.com/data-surge-protector-spd-tsj-indoor-gigabit-1101-994-p.aspx>

The information contained in this document is accurate to the best of our knowledge and representative of the part described herein. It may be necessary to make modifications to the part and/or the documentation of the part, in order to implement improvements. Transtector reserves the right to make such changes as required. Unless otherwise stated, all specifications are nominal. Transtector does not make any representation or warranty regarding the suitability of the part described herein for any particular purpose, and Transtector does not assume any liability arising out of the use of any part or documentation.

1101-994 CAD Drawing



REVISIONS			
REV.	DESCRIPTION	DATE	APPROVED
A	INITIAL RELEASE	1/17/19	DWR

UNLESS OTHERWISE SPECIFIED LEADING DIMENSIONS ARE INCHES DIMENSIONS IN [ ] ARE MILLIMETERS

TOLERANCES:  
 .X±.2 [5.08] FRACTIONS ±.102  
 .XX±.01 [.25] ±.102  
 XXX±.005 [.13] ANGLES ±1°

ALL DIMENSIONS SHOWN ARE FOR REFERENCE ONLY.  
 THIRD-ANGLE PROJECTION

THE INFORMATION AND DESIGN IN THIS DOCUMENT IS THE PROPERTY OF TRANSTECTOR CORPORATION. ALL RIGHTS RESERVED.

**TRANSTECTOR**  
 10701 AIRPORT ROAD, HAYDEN, ID, 83835  
 PHONE: 1.208.635.6400 | 1.800.882.9110  
 FAX: 1.208.955.2041  
 www.transistor.com | e-mail: sales@transistor.com

SIZE: A CAGE: 30992 DRAWN BY: HMB PART NUMBER: 1101-994 SHEET: 1 OF 1 SCALE: 1:1 REV: A

THESE COMMODITIES, TECHNOLOGY OR SOFTWARE WERE EXPORTED FROM THE UNITED STATES IN ACCORDANCE WITH THE EXPORT ADMINISTRATION REGULATIONS. DIVERSION CONTRARY TO U.S. LAW PROHIBITED.