

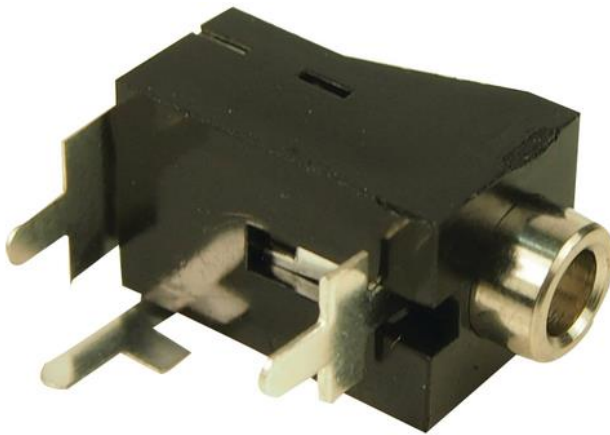


Datasheet

ENGLISH

Stock No: 125-1076

RS Pro DC Socket 3.5 mm, PCB Mount



Specifications:

From RS Pro, this PCB-mounted socket couples with Push Fit DC electric plugs. It is perfect for powering small appliances such as portable radios. This particular power jack socket includes a threadless nose, making it perfect for your application. All models are highly reliable and excellent quality.

Specifications	
Mounting Type:	PCB
Number of Poles:	2
Contact Gender:	Female
Width:	10 mm
Length:	10 mm
Pin Diameter:	3.5 mm
Body Orientation:	Right Angle