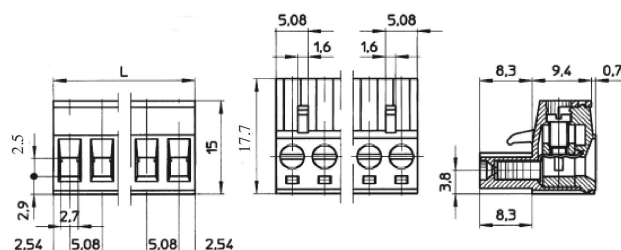


Datasheet

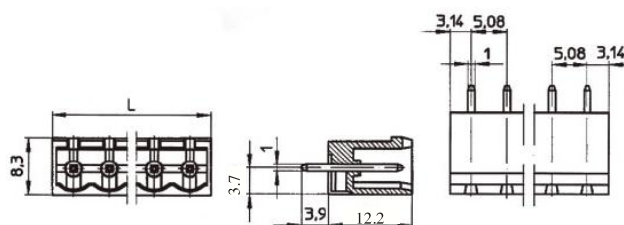
5.08mm Pitch Pluggable Rising Clamp Terminal

ENGLISH



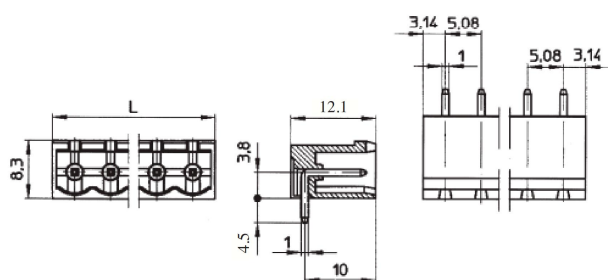
Female connector

| TYPE NO. | POLES | LENGTH |
|----------|-------|--------|
| 8971219 | 2 | 10.2mm |
| 8971212 | 3 | 15.2mm |
| 8971216 | 4 | 20.3mm |
| 8971225 | 5 | 25.4mm |
| 8971228 | 6 | 30.5mm |
| 8971222 | 7 | 35.6mm |
| 8971231 | 8 | 40.6mm |
| 8971234 | 9 | 45.7mm |



PCB mounting male vertical (closed end)

| TYPE NO. | POLES | LENGTH |
|----------|-------|---------|
| 8971238 | 2 | 11.4mm |
| 8971247 | 3 | 16.4mm |
| 8971240 | 4 | 21.5mm |
| 8971244 | 5 | 26.6mm |
| 8971253 | 6 | 31.7mm |
| 8971256 | 7 | 36.78mm |
| 8971250 | 8 | 41.8mm |
| 8971269 | 9 | 46.9mm |



PCB mounting male horizontal (closed end)

| TYPE NO. | POLES | LENGTH |
|----------|-------|---------|
| 8971262 | 2 | 11.4mm |
| 8971266 | 3 | 16.4mm |
| 8971275 | 4 | 21.5mm |
| 8971278 | 5 | 26.6mm |
| 8971272 | 6 | 31.7mm |
| 8971281 | 7 | 36.78mm |
| 8971284 | 8 | 41.8mm |
| 8971288 | 9 | 46.9mm |

- 2-24 pole solid block
- Pluggable male-female connectors
- Open & closed headers
- Horizontal & vertical female plug styles
- Polarised mouldings
- Moulded in green UL94-V0 flame retardant PA66
- Professional rising clamp terminals
- 0.33-2mm² (22-14AWG) solid & stranded cable
- Captive screws
- Guided pin alignment
- approved

SPECIFICATION

| | |
|---------------------------|---------------------------------|
| Rating | 15A 300V |
| Insulation resistance | 1000MΩ/1000V |
| Withstand Voltage | AC1500V/1min |
| Contact Resistance | 20mΩ |
| Working Temperature | -40°C to +105°C |
| Mouldings | UL94-V0 flame retardant PA66 |
| Pin/Terminal | Tin plated brass |
| Screw/Torque | M2.5 Steel, Nickel Plated 0.4Nm |
| Recommended PCB hole size | ø1.7mm |