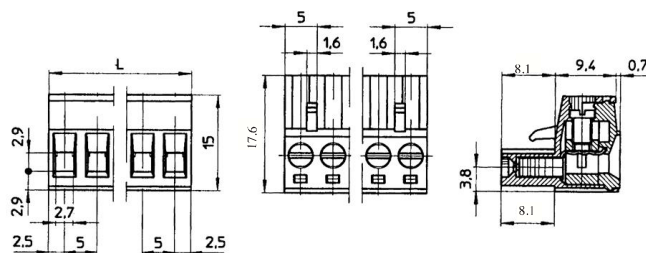


# Datasheet

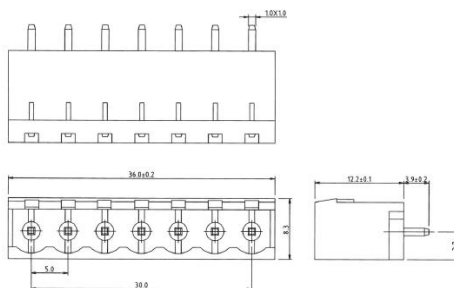
## 5mm Pitch Pluggable Rising Clamp Terminal

ENGLISH



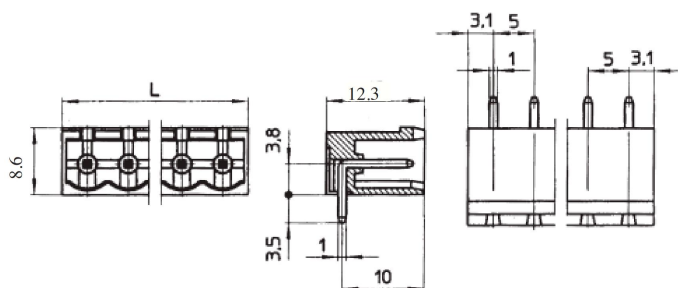
### Female connector

TYPE NO.	POLES	LENGTH
8971159	2	10mm
8971168	3	15mm
8971161	4	20mm
8971165	5	25mm
8971174	6	30mm
8971177	7	35mm
8971171	8	40mm
8971180	9	45mm



### PCB mounting male vertical (closed ended)

TYPE NO.	POLES	LENGTH
8971367	2	11.2mm
8971376	3	16.2mm
8971379	4	21.2mm
8971373	5	26.2mm
8971382	6	31.2mm
8971385	7	36.2mm
8971389	8	41.2mm
8971398	9	46.2mm



### PCB mounting male horizontal (closed ended)

TYPE NO.	POLES	LENGTH
8971183	2	11.2mm
8971187	3	16.2mm
8971196	4	21.2mm
8971199	5	26.2mm
8971193	6	31.2mm
8971203	7	36.2mm
8971206	8	41.2mm
8971200	9	46.2mm

- 2-24 pole solid block
- Pluggable male-female connectors
- Open & closed headers
- Horizontal & vertical female plug styles
- Polarised mouldings
- Moulded in green UL94-V0 flame retardant PA66
- Professional rising clamp terminals
- 0.2-3.3mm<sup>2</sup> (14-22 AWG) solid & stranded cable
- Captive screws
- Guided pin alignment
- approved

### SPECIFICATION

Rating	15A 250V
Insulation resistance	1000MΩ/1000V
Withstand Voltage	AC1000V/1min
Contact Resistance	20mΩ
Working Temperature	-40°C to +105°C
Mouldings	UL94-V0 flame retardant PA66
Wire Protector	Tin plated, phosphor bronze
Screw/Torque	M3 Steel, Tin Plated 0.4Nm
Recommended PCB hole size	ø1.4mm