

# FUSE BLOCKS

SCREW TERMINAL BLOCKS

FUSE BLOCKS, 5 x 20 and 5 x 25 mm

## HIGHLIGHTS

### FEATURES

- CF4U Series accepts 5x20mm/ 5x25mm fuse types
- Completely enclosed, no endplates
- CF4U(L) version with LED for blown fuse indication
- Large marking area
- No polarity required
- Blocks can be used for AC & DC Voltages

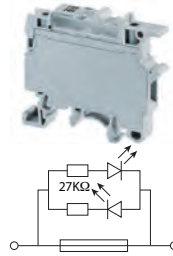
### APPLICATIONS

- Control systems with fuse protection

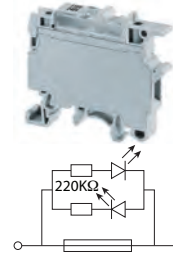
### CF4U



### CF4U(L)/6-60V



### CF4U(L)/110-240V



### Dimensions & Weight

|                   | CF4U                      | CF4U(L)/6-60V      | CF4U(L)/110-240V   |
|-------------------|---------------------------|--------------------|--------------------|
| Width             | 8 mm                      | 8 mm               | 8 mm               |
| Length            | 57.0 mm                   | 57.0 mm            | 57.0 mm            |
| Height w DIN Rail | 35 x 7.5 mm<br>35 x 15 mm | 50.3 mm<br>57.6 mm | 50.3 mm<br>57.6 mm |
| Weight per piece  | 14.8 g                    | 15.4 g             | 15.4 g             |

### Technical Data/Ratings

| Approvals                    | CF4U         |                       | CF4U(L)/6-60V |                       | CF4U(L)/110-240V |                       |
|------------------------------|--------------|-----------------------|---------------|-----------------------|------------------|-----------------------|
|                              | CE           | UL E220514            | UL E220514    | UL E220514            | UL E220514       | UL E220514            |
| Wire Size (solid / stranded) | 22-10 AWG    | 0.2-4 mm <sup>2</sup> | 22-10 AWG     | 0.2-4 mm <sup>2</sup> | 22-10 AWG        | 0.2-4 mm <sup>2</sup> |
| Voltage Rating               | 600 V        | 800 V AC/DC           | 600 V         | 800 V AC/DC           | 600 V            | 800 V AC/DC           |
| Current Rating               | 10 A         | 6.3 A                 | 10 A          | 6.3 A                 | 10 A             | 6.3 A                 |
| Torque                       | 7 lb-in      | 0.5 Nm                | 7 lb-in       | 0.5 Nm                | 7 lb-in          | 0.5 Nm                |
| Insulation Material          | Polyamide 66 |                       |               |                       |                  |                       |

### Fuse Specifications

|                       | CF4U                | CF4U(L)/6-60V       | CF4U(L)/110-240V    |
|-----------------------|---------------------|---------------------|---------------------|
| Fuse Type             | 5x20 mm / 5 x 25 mm | 5x20 mm / 5 x 25 mm | 5x20 mm / 5 x 25 mm |
| LED Indicator Voltage | -                   | 6-60V AC/DC         | 110-240V AC/DC      |

### Installation Instructions

|                       | CF4U                   | CF4U(L)/6-60V          | CF4U(L)/110-240V       |
|-----------------------|------------------------|------------------------|------------------------|
| Wire Stripping Length | 9.5 mm                 | 9.5 mm                 | 9.5 mm                 |
| Screwdriver           | Flat Head 0.6 x 3.5 mm | Flat Head 0.6 x 3.5 mm | Flat Head 0.6 x 3.5 mm |

### Terminal Blocks

|                        | Cat. No.    | Std. Pk. | Cat. No.             | Std. Pk. | Cat. No.                | Std. Pk. |
|------------------------|-------------|----------|----------------------|----------|-------------------------|----------|
| <b>Grey (standard)</b> | <b>CF4U</b> | 50       | <b>CF4U(L)/6-60V</b> | 50       | <b>CF4U(L)/110-240V</b> | 50       |
| Blue BU                | CF4U/BU     | 50       | CF4U(L)/6-60V/BU     | 50       | CF4U(L)/110-240V/BU     | 50       |
| Black BL               | CF4U/BL     | 50       | CF4U(L)/6-60V/BL     | 50       | CF4U(L)/110-240V/BL     | 50       |

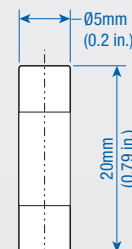
### Accessories

|                 | Cat. No.   | Std. Pk.         | Cat. No.   | Std. Pk.         | Cat. No.   | Std. Pk.         |
|-----------------|------------|------------------|------------|------------------|------------|------------------|
| DIN Rail        | 2511120    | 20               | 2511120    | 20               | 2511120    | 20               |
|                 | CA701-15/S | 20               | CA701-15/S | 20               | CA701-15/S | 20               |
|                 | 2511160    | 10               | 2511160    | 10               | 2511160    | 10               |
| External Jumper | CA711/2    | 100              | CA711/2    | 100              | CA711/2    | 100              |
|                 | CA711/3    | 50               | CA711/3    | 50               | CA711/3    | 50               |
|                 | CA711/4    | 50               | CA711/4    | 50               | CA711/4    | 50               |
|                 | CA711/10   | 20               | CA711/10   | 20               | CA711/10   | 20               |
|                 | CA711/10   | 20               | CA711/10   | 20               | CA711/10   | 20               |
| Marking Tag     | MT8        | 1 Pk. (100 tags) | MT8        | 1 Pk. (100 tags) | MT8        | 1 Pk. (100 tags) |
|                 | MT6        | 1 Pk. (100 tags) | MT6        | 1 Pk. (100 tags) | MT6        | 1 Pk. (100 tags) |

### Fuses 5 x 20 mm



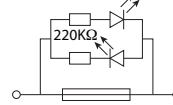
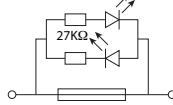
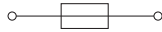
| Current Rating | Slow Blow Cat. No | Fast Blow Cat. No |
|----------------|-------------------|-------------------|
| 0.1A           | 0.1M5x20T         | 0.1M5x20F         |
| 0.2A           | 0.2M5x20T         | 0.2M5x20F         |
| 0.5A           | 0.5M5x20T         | 0.5M5x20F         |
| 1.0A           | 1.0M5x20T         | 1.0M5x20F         |
| 2.0A           | 2.0M5x20T         | 2.0M5x20F         |
| 4.0A           | 4.0M5x20T         | 4.0M5x20F         |
| 5.0A           | 5.0M5x20T         | 5.0M5x20F         |
| 6.3A           | 6.3M5x20T         | 6.3M5x20F         |
| 8.0A           | 8.0M5x20T         | 8.0M5x20F         |
| 10.0A          | 10.0M5x20T        | 10.0M5x20F        |



**CF4SP**

**CF4SP(L)/6-60V**

**CF4SP(L)/110-240V**



**Dimensions & Weight**

|                    |             |            |
|--------------------|-------------|------------|
| Width              | 6 mm        |            |
| Length             | 58.5 mm     |            |
| Height w/ DIN Rail | 35 x 7.5 mm | 35 x 15 mm |
|                    | 70.0 mm     | 77.5 mm    |
| Weight per piece   | 16.9 g      | 17.4 g     |

**Technical Data/Ratings**

|                              |              |                       |
|------------------------------|--------------|-----------------------|
| Approvals                    |              |                       |
| Wire Size (solid / stranded) | 24-10 AWG    | 0.2-4 mm <sup>2</sup> |
| Voltage Rating               | 600 V        | 1000 V AC/DC          |
| Current Rating               | 10 A         | 10 A                  |
| Torque                       | 4.5 lb-in    | 0.5 Nm                |
| Insulation Material          | Polyamide 66 |                       |

**Fuse Specifications**

|                       |                     |
|-----------------------|---------------------|
| Fuse Type             | 5x20 mm / 5 x 25 mm |
| LED Indicator Voltage | -                   |

**Installation Instructions**

|                       |                        |
|-----------------------|------------------------|
| Wire Stripping Length | 8 mm                   |
| Screwdriver           | Flat Head 0.6 x 3.5 mm |

**Terminal Blocks**

|                        |              |          |                       |          |                          |          |
|------------------------|--------------|----------|-----------------------|----------|--------------------------|----------|
| <b>Grey (standard)</b> | Cat. No.     | Std. Pk. | Cat. No.              | Std. Pk. | Cat. No.                 | Std. Pk. |
| Blue BU                | <b>CF4SP</b> | 50       | <b>CF4SP(L)/6-60V</b> | 50       | <b>CF4SP(L)/110-240V</b> | 50       |
| Black BL               | CF4SP/BU     | 50       | CF4SP(L)/6-60V/BU     | 50       | CF4SP(L)/110-240V/BU50   |          |
|                        | CF4SP/BL     | 50       | CF4SP(L)/6-60V/BL     | 50       | CF4SP(L)/110-240V/BL50   |          |

**Accessories**

|                           |                 |          |                  |          |                  |          |
|---------------------------|-----------------|----------|------------------|----------|------------------|----------|
| DIN Rail                  | Cat. No.        | Std. Pk. | Cat. No.         | Std. Pk. | Cat. No.         | Std. Pk. |
|                           | 2511120         | 20       | 2511120          | 20       | 2511120          | 20       |
|                           | CA701-15/S      | 20       | CA701-15/S       | 20       | CA701-15/S       | 20       |
|                           | 2511160         | 10       | 2511160          | 10       | 2511160          | 10       |
| Internal Jumper           | CA722/2         | 100      | CA722/2          | 100      | CA722/2          | 100      |
|                           | CA722/3         | 100      | CA722/3          | 100      | CA722/3          | 100      |
|                           | CA722/4         | 100      | CA722/4          | 100      | CA722/4          | 100      |
|                           | CA722/10        | 10       | CA722/10         | 10       | CA722/10         | 10       |
|                           | CA722/100       | 10       | CA722/100        | 10       | CA722/100        | 10       |
| Insulated Internal Jumper | CA742/2         | 100      | CA742/2          | 100      | CA742/2          | 100      |
|                           | CA742/3         | 100      | CA742/3          | 100      | CA742/3          | 100      |
|                           | CA742/4         | 100      | CA742/4          | 100      | CA742/4          | 100      |
|                           | CA742/10        | 10       | CA742/10         | 10       | CA742/10         | 10       |
|                           | CA742/100       | 10       | CA742/100        | 10       | CA742/100        | 10       |
| External Jumper           | CA714/2         | 100      | CA714/2          | 100      | CA714/2          | 100      |
|                           | CA714/3         | 100      | CA714/3          | 100      | CA714/3          | 100      |
|                           | CA714/4         | 100      | CA714/4          | 100      | CA714/4          | 100      |
|                           | CA714/10        | 20       | CA714/10         | 20       | CA714/10         | 20       |
| Marking Tag               | On Terminal     | MT6      | 1 Pk. (100 tags) | MT6      | 1 Pk. (100 tags) | MT6      |
|                           | On Fuse Carrier | MT6      | 1 Pk. (100 tags) | MT6      | 1 Pk. (100 tags) | MT6      |

**HIGHLIGHTS**

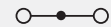
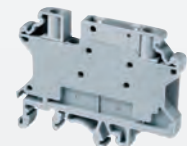
**FEATURES**

- CF4SP Series accepts 5x20mm fuse types
- 6mm wide, compact design
- Internal shorting channel
- Completely enclosed, no endplates
- CF4SP(L) version with LED for blown fuse indication
- No polarity required

**APPLICATIONS**

- Control systems with fuse protection
- Control Circuits with alternating configuration with (CF4SPFT, CKT4SP, etc...)

**CF4SPFT**



Feed Through Terminal  
Same Profile as CF4SP

**Technical Data/Ratings**

|              |                       |
|--------------|-----------------------|
|              |                       |
| 24-10 AWG    | 0.2-4 mm <sup>2</sup> |
| 600 V        | 1000 V                |
| 30 A         | 32 A                  |
| 4.5 lb-in    | 0.5 Nm                |
| Polyamide 66 |                       |