



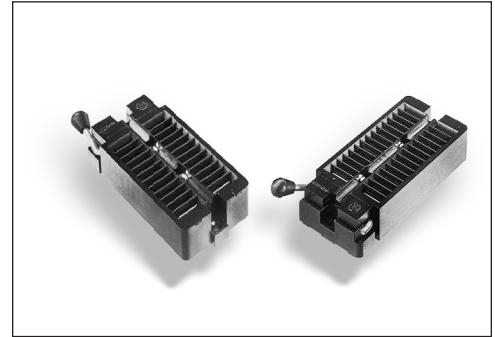
# Series X55X Universal Zero-Insertion-Force DIP Test Socket

## FEATURES

- Aries Universal Test Socket accepts devices on 0.300 to 0.600 [7.62 to 15.24] centers.
- All pin count sockets go into PCB with either 0.300 or 0.600 [7.62 to 15.24] centers.
- Contacts are normally closed to eliminate dependence on plastic to sustain contact.
- Socket handle can be configured with closed contacts (on) when in the UP or DOWN position, and can be mounted on either the right or left side.
- Sockets can be soldered into PCBs or plugged into any socket. Socket fits into Aries' or any competitive test socket receptacle.

## GENERAL SPECIFICATIONS

- SOCKET BODY: black UL 94V-0 glass-filled Polyphenylene Sulfide (PPS)
- HANDLE: Stainless Steel
- HANDLE KNOB: Brass 360, 1/2-hard
- CONTACTS: BeCu 172 per QQ-C-533 or NiB (Spinodal)
- CONTACT PLATING: 50μ [1.27μ] min. Ni under-plate per QQ-N-290, over-plated with either 200μ [5.08μ] min. matte Sn per ASTM B545-97 or 200μ [5.08μ] 90/10 Sn/Pb per MIL-T-10727 or 10μ [0.254μ] min. Au per MIL-G-45204
- SPINODAL CONTACT PLATING: 50μ [1.27μ] min. NiB
- CONTACT CURRENT RATING: 1 amp
- INSULATION RESISTANCE: 1000 mΩ min.
- DIELECTRIC WITHSTANDING VOLTAGE: 1000 VAC
- LIFE CYCLE: 25,000 to 50,000 cycles
- OPERATING TEMPERATURE: -67°F [-55°C] min.; 221°F [105°C] max. for Sn plating; 302°F [150°C] for Au plating; 392°F [200°C] for NiB plating
- RETENTION FORCE (closed): 55g/pin based on a 0.020 [0.51] dia. test lead
- ACCEPTS LEADS: 0.015-0.045 [0.38-1.14] wide, 0.110-0.280 [2.79-7.11] long



**CUSTOMIZATION:** In addition to the standard products shown on this page, Aries specializes in custom design and production. Special materials, platings, sizes, and configurations can be furnished, depending on the quantity. **NOTE:** Aries reserves the right to change product general specifications without notice.

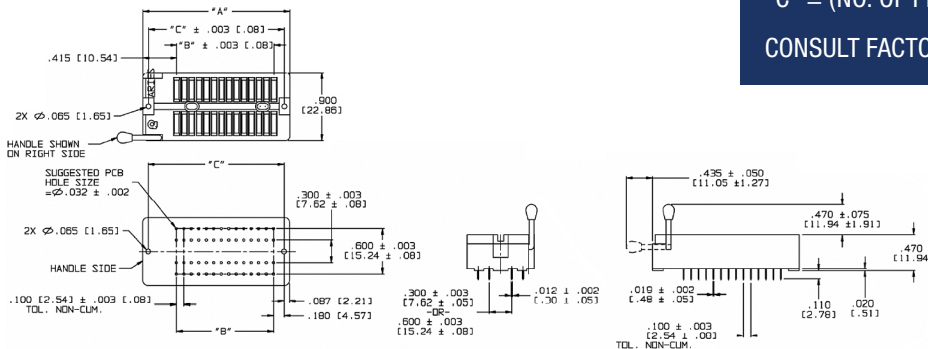
## ORDERING INFORMATION

### XX-X55X-1 X

- Pins**
    - 24, 28, 32, 36, 40, 42, 44, 48
  - Row-to-Row Spacing (btm)**
    - 3 = 0.300 [7.62]
    - 6 = 0.600 [15.24]
  - Plating**
    - 0 = Sn over Ni
    - OTL = Sn/Pb over Ni
    - 1 = Au over Ni
    - 6 = NiB (Spinodal)
  - Solder Pin Tail**
  - Handle Options**
    - 1 = Left, up is on
    - 2 = Right, up is on
    - 3 = Left, down is on
    - 4 = Right, down is on (std)
- NOTE:** "on" = closed contacts

## MOUNTING CONSIDERATIONS

- See Socket Footprint below



ALL DIMENSIONS: INCHES [MILLIMETERS]

ALL TOLERANCES:  $\pm 0.005$  [0.13] UNLESS OTHERWISE SPECIFIED

"A" = (NO. OF PINS PER ROW  $\times$  0.100 [2.54]) + 0.590 [14.99]

"B" = (NO. OF PINS PER ROW - 1)  $\times$  0.100 [2.54]

"C" = (NO. OF PINS PER ROW  $\times$  0.100 [2.54]) + 0.415 [10.54]

CONSULT FACTORY FOR OTHER SIZES AND CONFIGURATIONS



Bristol, PA 19007-6810 USA  
 TEL (215) 781-9956 • FAX (215) 781-9845  
 WWW.ARIESELEC.COM • INFO@ARIESELEC.COM

