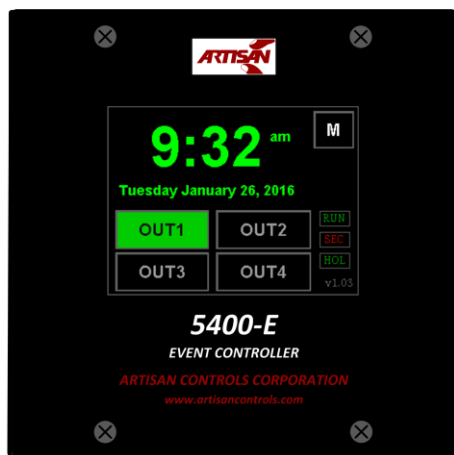




Artisan Controls Corporation
Solid State Timers and Controllers Since 1965



5400-E

7 Day Event Controller

The Model 5400-E is Artisan's newest event controller designed for any application which requires time-of-day and/or day-of-week control. This unique design provides two 10 ampere relay outputs, two 5VDC outputs for driving solid state relays, and two low voltage switch inputs which can be configured for securing the controller or enabling and disabling the outputs. The user interface is a state of the art color LCD display with resistive touchscreen protected with an overlay for maximum reliability in any environment. This one controller can schedule outputs to operate in an event control or bell control scheme with easy to understand screens for configuring the output schedules and overall controller configuration.

Artisan Controls has been manufacturing event and bell controllers for over 20 years. We have taken the unique features we have developed in our 4950 event controller products, the 5400-E combines and enhances them for maximum flexibility:

Events – The 4950 controllers had a capacity of 56 events which could be divided equally over a seven day week or used all in one day. The 5400-E controller can store up to 128 events which can be assigned to one of the outputs for any or all of the days of the week, *effectively increasing the programmability of the capacity of the controller by a factor of 16.*

Programming – With its color LCD and touchscreen the process of creating and editing events is as simple as can be, events are added to any output's schedule and the 5400-E *automatically sorts them by time and displays the event in a scrollable list.*

From the list of events the user can add a totally new event, edit an existing event, copy an event to a new event which eases creation of multiple similar events, or simply delete an event. As events are edited the controller sorts and redisplay them in the list.

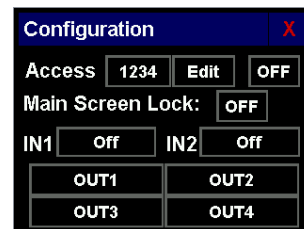
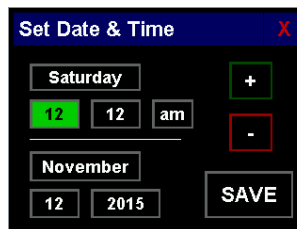
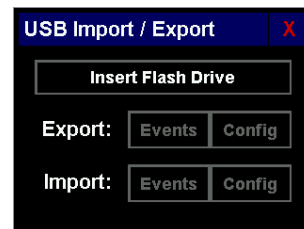
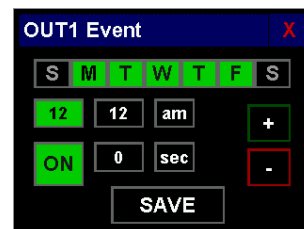
The user can also delete the entire schedule of events for an output, delete all events in the controller, or copy them from one output to another

The 5400-E has the capacity to have up to 15 holidays on which none of the events are activated, all outputs are off.

Once your controller has been programmed, the integral USB port can be used to save the events and controller configuration to a USB flash drive for long term storage or they can be used to configure another controller.

Setting the current date and time is done by touching the time on the main screen and touching the appropriate buttons to set the day of the week, hour, minute, am/pm, and the current calendar date.

The 5400-E can be configured to secure the events and configuration from unauthorized changes through use of a four digit access code or thru the activation of one of the switch inputs. The front screen can also be locked to prevent time and output state changes. The outputs can be named for easy understanding of the state of the outputs, and either of the switch inputs can be configured to disable all outputs.



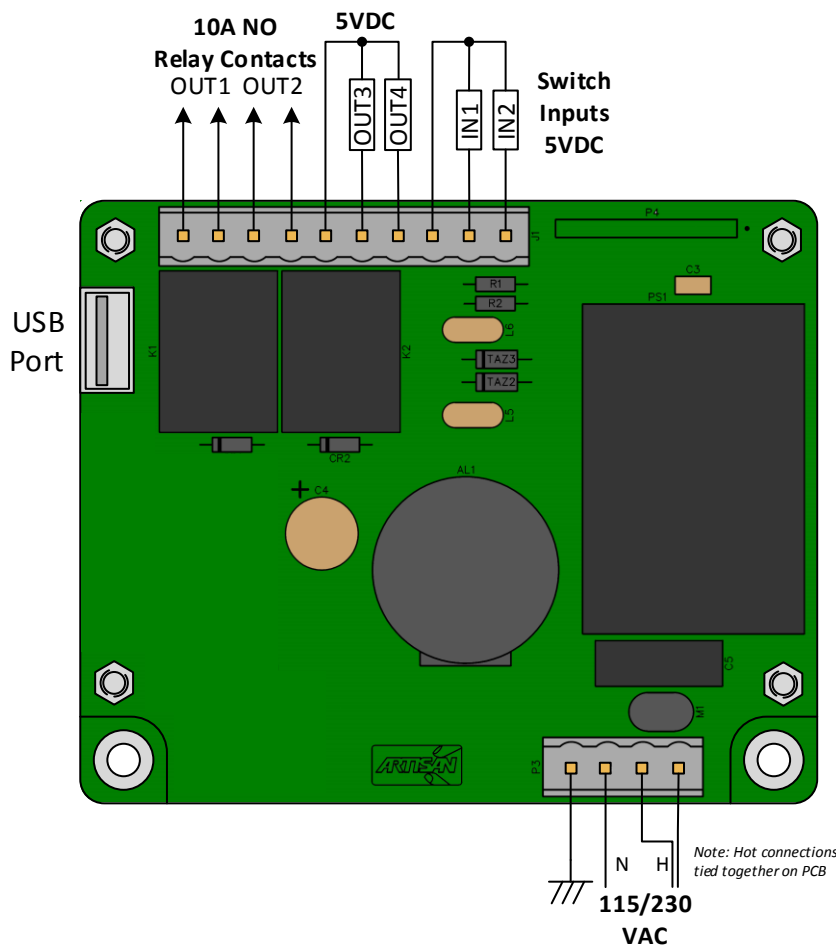
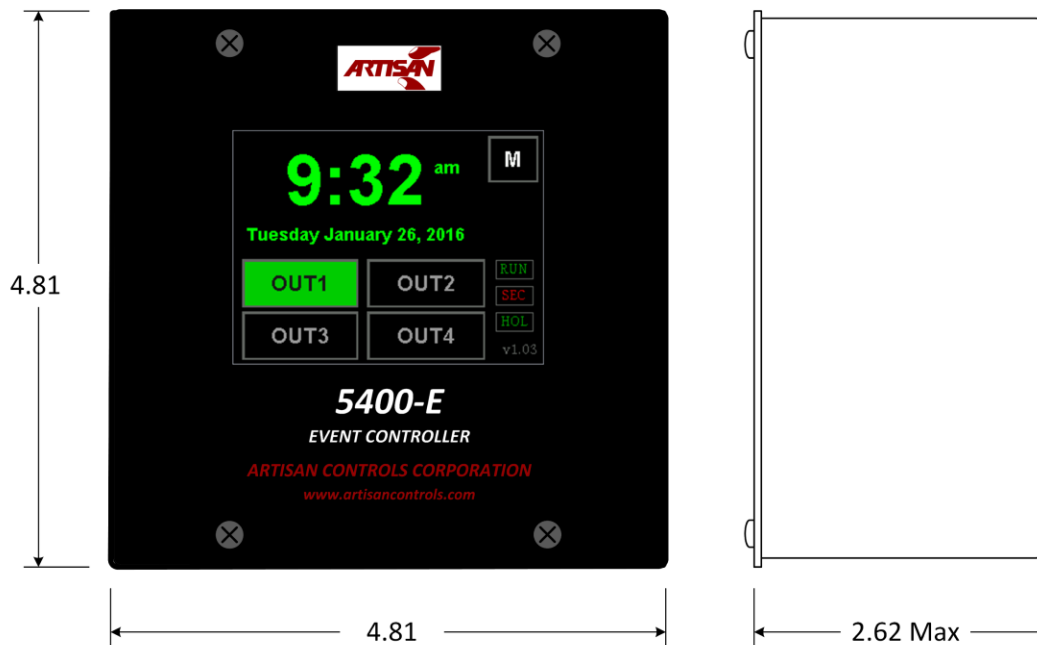
Visit our website at: www.artisancontrols.com

Notice: Artisan Controls Corporation assumes no responsibility for customers applications or product design. The information and data contained herein is the sole and exclusive property of Artisan Controls Corporation. Any duplication, misuse, or conversion of this information without the express written consent of Artisan Controls Corporation is illegal and will result in damages including court costs and attorney fees being assessed against the party misusing this property

Tel: 973-598-9400 Fax: 973-598-9410 Toll Free: 800-457-4950
Artisan Controls Corporation, 111 Canfield Ave., Bldg B15-18, Randolph, NJ 07869



Artisan Controls Corporation
Solid State Timers and Controllers Since 1965



Visit our website at: www.artisancontrols.com

Notice: Artisan Controls Corporation assumes no responsibility for customers applications or product design. The information and data contained herein is the sole and exclusive property of Artisan Controls Corporation. Any duplication, misuse, or conversion of this information without the express written consent of Artisan Controls Corporation is illegal and will result in damages including court costs and attorney fees being assessed against the party misusing this property

Tel: 973-598-9400 Fax: 973-598-9410 Toll Free: 800-457-4950
Artisan Controls Corporation, 111 Canfield Ave., Bldg B15-18, Randolph, NJ 07869



Artisan Controls Corporation
Solid State Timers and Controllers Since 1965

SPECIFICATIONS:

LCD DISPLAY: Color 3.5" diagonal TFT display, 320 x 240 pixels, 16 bit color, resistive touchscreen, 300 nits minimum.

INPUTS:

SW1 & SW2: Low voltage dry contact inputs, <5mA @ 5VDC

OUTPUTS:

OUT1 & OUT2: SPNO relay contacts rated 10A @ 125V, 7A @ 250V.

OUT3 & OUT4: 5VDC @ 50mA maximum².

FUNCTIONALITY:

Up to 128 events usable for any output, configurable for any number of days of the week.

REAL TIME CLOCK:

Accurate to ± 2 minutes/month. Active for up to 5 days without power without batteries.

ARCHITECTURE:

Microcontroller: 32 bit processor, 80MHz, w/floating point.

Graphics: Epson graphics controller, 60 fps refresh rate

USB PORT:

Flash drive interface for importing & exporting output schedules and controller configuration.

CONNECTIONS:

Supply: Wago 231-134/001-000

Input/Output: Wago 231-140/001-000

ENVIRONMENTAL:

Operating Temperature: 0°C to +70°C

AC POWER: 90-265VAC, 50/60Hz, 5W maximum

RECOGNITIONS:

Conforms to UL STDS 60730-1 & 60730-2-9

Certified to CSA STDS E60730-1 & E60730-2-9



²- Total external 5VDC current draw = 80mA maximum.

Visit our website at: www.artisancontrols.com

Notice: Artisan Controls Corporation assumes no responsibility for customers applications or product design. The information and data contained herein is the sole and exclusive property of Artisan Controls Corporation. Any duplication, misuse, or conversion of this information without the express written consent of Artisan Controls Corporation is illegal and will result in damages including court costs and attorney fees being assessed against the party misusing this property

Tel: 973-598-9400 Fax: 973-598-9410 Toll Free: 800-457-4950
Artisan Controls Corporation, 111 Canfield Ave., Bldg B15-18, Randolph, NJ 07869