

Datasheet

320W Enclosed Power Supply Range

**Features:**

- High efficiency, long life and high reliability
- 3 Year Warranty
- Universal Input
- Wide Operating Ambient Temperature Range
- Operating Altitude of up to 5000m on many of the range
- UL & CE Approved

The 320W enclosed power supply range has been specially designed to offer high efficiency, long life and high reliability for use in a variety of applications. This range comprises of 3 models with outputs of either 12v, 24v or 48v. Each model is approved to CE, CB, UL and come with a three year warranty.



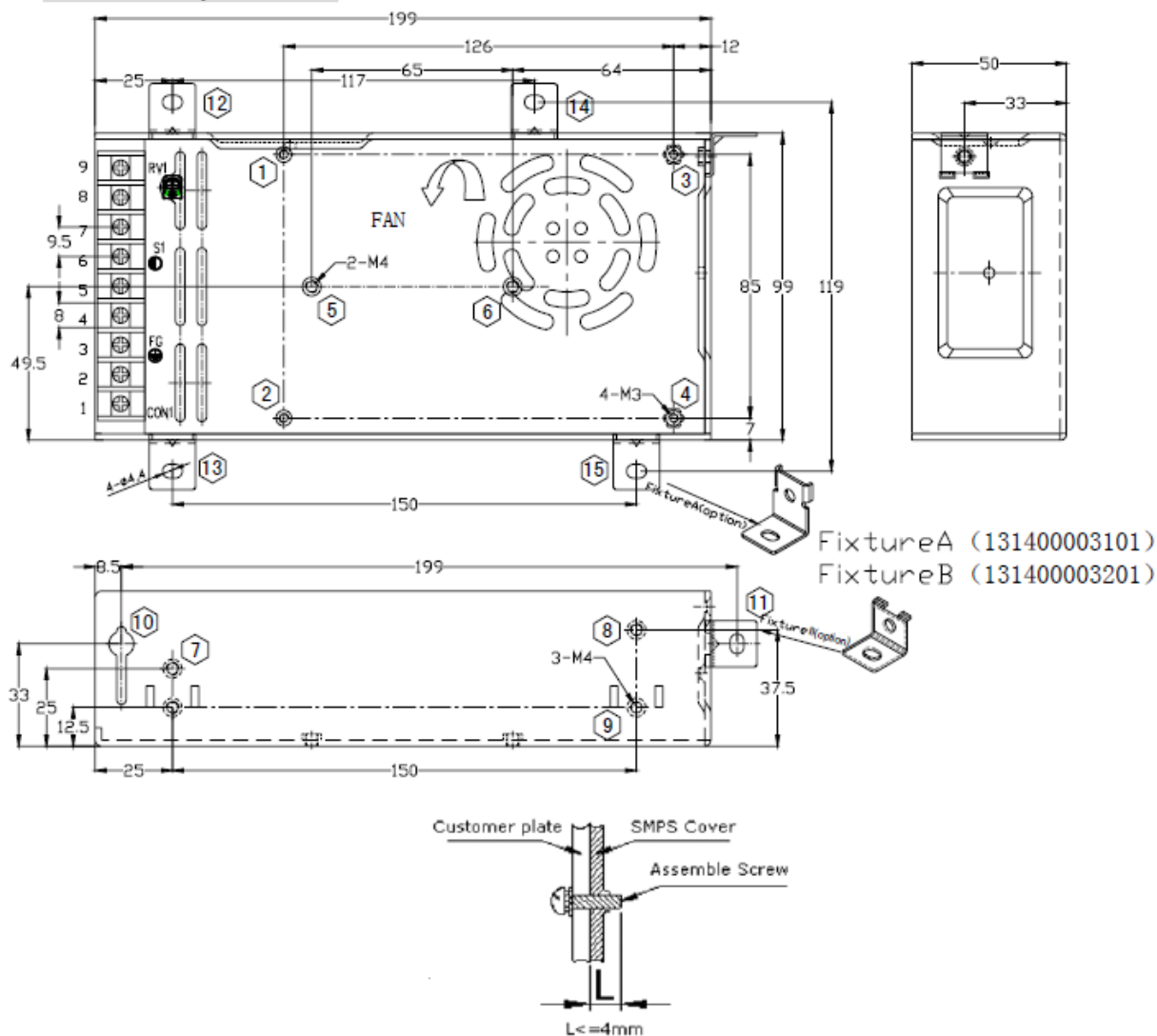


ENGLISH

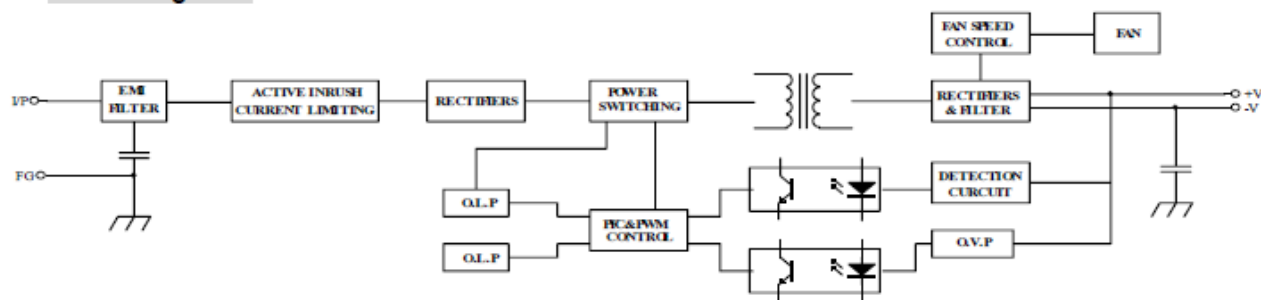
RS Stock Code		1618228	1618229	1618230
Output	DC Voltage	12V	24V	48V
	Rated Current	25A	13A	6.7A
	Current Range	0~25A	0~13A	0~6.7A
	Ripple & Noise	<150mVp-p	<200mVp-p	<200mVp-p
	Voltage Adjustment Range	5%~10% of Rated Output Voltage		
	Voltage Accuracy	+/- 1.0%		
	Line Regulation	+/- 0.5%		
	Load Regulation	+/- 1.0%		
	Overshoot & Undershoot	<5.0%		
	Rise Time	<2 Seconds - 230Vac at 100% Load		
	Hold Up Time	>10mS - 230Vac at 100% Load		
Input	Full Input Voltage Range	85~264Vac		
	Full Frequency Range	47-63Hz		
	AC Current	< 4.5A		
	In Rush Current	<50A@230Vac <30A@115Vac		
	Leakage Current	Input-Output:<0.25mA Input-PG:<1.0mA		
Protection	Over Load	105~150% rated output current		
	Short Circuit	Long Term Mode, auto-recovery		
Environment	Working Temp	-25°C ~ +70°C (230Vac) (Refer to output derating curve)		
	Working Humidity	20~90%RH non-condensing		
	Storage Temp	-40°C ~ +85°C		
	Storage Humidity	10 ~ 95%RH non-condensing		
	Vibration Resistance	10 ~ 500Hz, 2G, 10 minute cycle, X, Y,Z 60 minute in each direction		
Safety	Safety Standards	UL60950-1, EN60950-1: 2006 IEC60950-1:2005		
	Withstand Voltage	I/P-O/P: 3KVac I/P-FG: 1.5KVac O/P-FG: 0.5KVac		
	Isolation Resistance	> 100M Ohms		
	EMC Emission	Compliance to EN55022 Class B		
	EMC Immunity	Compliance to EN61000-4-2, 3, 4, 5, 6, 8, 11		
Others	Lifetime	200,000 Hours (25°C)		
	Size	199mm x 99mm x 50mm		
	Package	12pcs/ctn, 11.6KG		
Notes	1)All parameters NOT specially mentioned are measured at 230Vac input, rated load and 25°C of ambient temperature. 2)Measured at 20MHz of bandwidth by using a 12" twisted pair-wire terminated with a 0.1 uF & 47uF parallel capacitor. 3)The power supply is considered a component which must be installed into final equipment. The final equipment must be re- confirmed that it meets all applicable directives.			

■ Mechanical Specification

unit:mm



■ **Block Diagram**



■ **Derating Curve**

