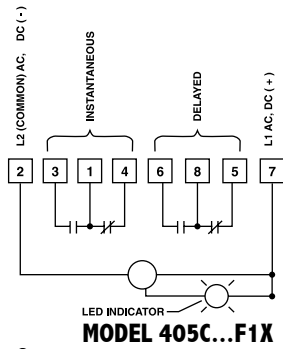
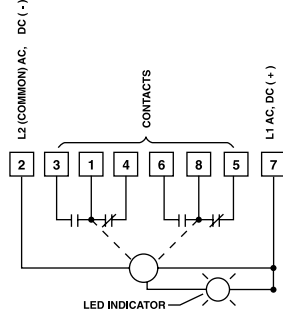
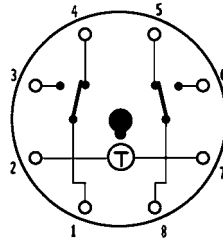


WIRING

WIRING



TERMINAL WIRING



MODEL NUMBER

MODEL NUMBER	405C				
RANGE					
Six dial-selected ranges (1 or 10 SEC/MIN/HRS)	100				
Six dial-selected ranges (5 or 50 SEC/MIN/HRS)	500				
VOLTAGE & FREQUENCY					
12 VDC		E			
24 to 240 VAC (50/60 Hz) and 24 VDC		F			
24 VDC (low inrush current for short-circuit protected sensors)		N			
ARRANGEMENT					
8-Pin ON-Delay (with instantaneous contacts) Timing Mode	1				
8-pin ON-Delay, Interval Timing Modes	2				
FEATURES					
Standard					X
Special					K

ACCESSORIES

8-Pin surface/DIN rail socket	000-825-85-00
Hold down for above socket (Requires 2 per unit)	407-025-13-00
Panel mounting bracket	405-320-02-00
Plug-in socket kit (8-pin)	319-261-45-00
8-Pin panel socket w/rear facing terminals	000-825-90-00

SPECIFICATIONS

MODELS	405C100F1X ON-Delay w/instantaneous & delayed relays (1 or 10 SEC/MIN/HRS)
	405C500F1X ON-Delay w/instantaneous & delayed relays (5 or 50 SEC/MIN/HRS)
	405C100F2X ON-Delay/Interval with (1) DPDT relay (1 or 10 SEC/MIN/HRS)
	405C500F2X ON-Delay/Interval with (1) DPDT relay (5 or 50 SEC/MIN/HRS)
	Both models available in 6 ranges from 1 SEC to 10 HRS or 5 SEC to 50 HRS
CONTACT RATING	Rated 10 AMPS resistive at 30 VDC or 250 VAC (or less) 1/8 HP @120 VAC 1/4 HP @ 240 VAC 240 VA @ 240 VAC LIFE: 10 million operation with no load 100,000 operations with: 10 AMPS at 30 VDC (or less) or 10 AMPS at 250 VAC (or less)
CONTACT MATERIAL	Silver Nickel
TEMPERATURE RATING	0 to 122°F (-18 C to 50 C)
MOUNTING	Plug-in octal base; mounts in any position w/ retaining clip Options: Surface mounting socket DIN rail mounting socket Panel-mounting adapter kit Plug-on socket kit
POWER REQUIREMENTS	Universal power supply - reverse polarity protected Unit will accept power from 24 to 240 VAC, 50 or 60 Hz, (+10%, - 20%) AC Inrush - 1.5 Amps Power required - 1.2 watts DC Maximum ripple @100 Hz - 5% Current required - 50mA Power required - 1.2 watts F option Peak inrush current = 2 AMPS @ 24 VDC N option Peak inrush current = 150 mA @ 24 VDC
REPEAT ACCURACY	Varies as a function of temperature. Any voltage (constant temperature): ±0.5%* Any voltage (0°F to 140°F): ±2.0%* *Variation from average actual time.
MINIMUM SETTING	2% of range, with the exception of 50 mSEC on the 1 second range
SETTING ACCURACY	± 5% of range
RESET	a 0 to 20 mSEC power interruption: guaranteed no reset. b 20 to 65 mSEC; it may reset (40 mSEC typical reset). c Over 65 mSEC guaranteed to reset. The TDR will reset properly and not start timing when subjected to an open start switch leakage of 1.5 mA or less. (Prox switch and Triac drive applications)
WEIGHT	5 oz. (140 g)

1/16 DIN TIMER ACCESSORIES—8 PIN ACCESSORIES

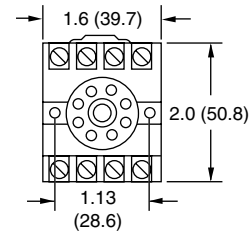
000-825-85-00

8-Pin surface DIN rail socket.

Recommended for use with all 8-pin octal plug-in devices when surface mounting or DIN rail mounting.

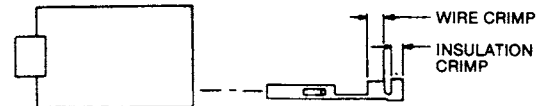
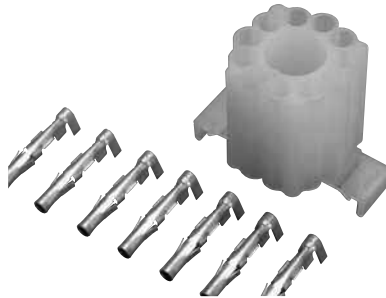
UL #E72711

US & CAN.



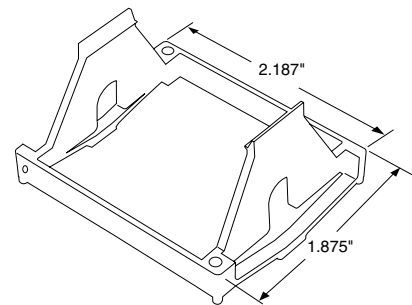
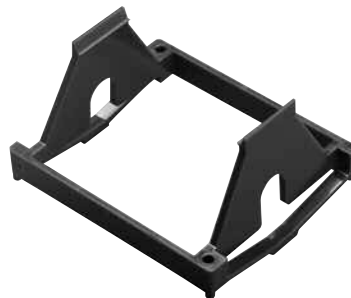
319-261-45-00

Plug-on socket kit (8 pin). Recommended for use with all 8-pin octal plug-in devices. Panel mounting only. Attach the wires to the solderless connector with a crimping tool.



405-320-02-00

Panel Mounting bracket. Recommended for use with all 1/16 DIN timers when panel mounting. Use in conjunction with the 8-pin or 11-pin panel socket with rear facing terminals.



407-025-13-00

Hold-down for part #000-825-85-00.

Two (2) needed for proper installation.

