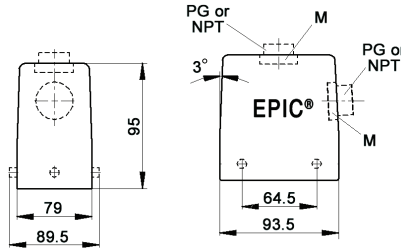


EPIC® HA 48 standard hood

Hood with double lever bolts



all dimensions are in mm

Technical data

IP Protection class: NEMA 4, NEMA 12
IP65

Complete the installation

HA dust covers
page 429

Approvals

PG

PG hood		SKINTOP® gland	
size	part number	plastic	metal
Top entry			
PG 29	106318	53015060	52015760
Side entry			
PG 29	106308	53015060	52015760

PG hood provided with EPIC® SM/SP gland

NPT

NPT hood		SKINTOP® gland	
size	part number	plastic	metal
Top entry			
1"	106318NP	S1101	53112044
Side entry			
1"	106308NP	S1101	53112044

NPT hood provided with NPT fitting

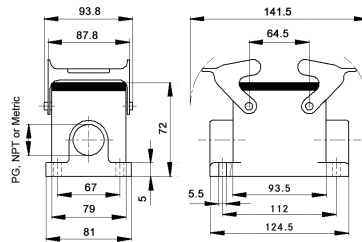
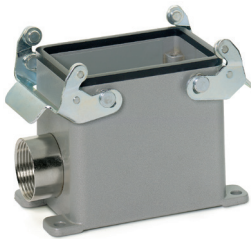
metric

Metric hood*		SKINTOP® gland	
size	part number	plastic	metal
Top entry			
M32	19631800	53111040	53112040
M40	19636600	53111050	53112050
Side entry			
M32	19630800	53111040	53112040
M40	19635600	53111050	53112050

* Metric hoods do not come with a neck

EPIC® HA 48 surface mount base

Surface mount base with double levers



all dimensions are in mm

Technical data

IP Protection class: NEMA 4, NEMA 12
IP65

Complete the installation

HA dust covers
page 429

Approvals

PG

PG base		SKINTOP® gland	
size	part number	plastic	metal
One entry			
PG 29	106338	53015060	52015760

PG base provided with EPIC® SM/SP gland

NPT

NPT base		SKINTOP® gland	
size	part number	plastic	metal
One entry			
1"	106338NP	S1101	53112044

NPT base provided with NPT fitting

metric

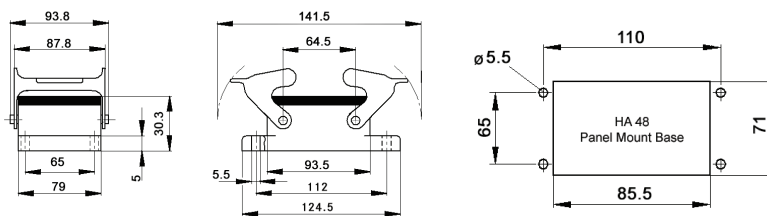
Metric base*		SKINTOP® gland	
size	part number	plastic	metal
One entry			
M32	19633800	53111040	53112040
M40	19638600	53111050	53112050
Two entries			
M40	19639600	53111050	53112050

* Metric bases do not come with a neck

If not otherwise specified, all values relating to the product are nominal values.
Photographs are not to scale and are not true representations of the products in question.

EPIC® HA 48 panel mount base

Panel mount base with double levers



all dimensions are in mm

Technical data

IP Protection class: NEMA 4, NEMA 12
IP65

Complete the installation

HA dust covers
page 429

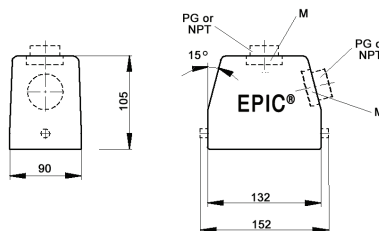
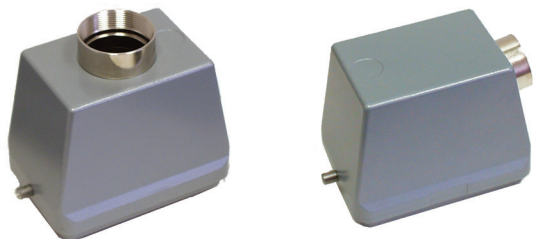
Approvals



Dust cover included	Part number
no	106255C0

EPIC® HA 64 standard hood

Hood with single lever bolts



all dimensions are in mm

Technical data

IP Protection class: NEMA 4, NEMA 12
IP65

Complete the installation

HA dust covers
page 429

Approvals



PG

size	PG hood		SKINTOP® gland	
	part number	plastic	plastic	metal
Top entry				
PG 29	101550HA	53015060	53015060	52015760
PG 36	101560HA	53015070	53015070	52015765
PG 42	101570HA	53015080	53015080	52015766
Side entry				
PG 29	101580HA	53015060	53015060	52015760
PG 36	101590HA	53015070	53015070	52015765
PG 42	101600HA	53015080	53015080	52015766

PG hood provided with EPIC® SM/SP gland

NPT

size	NPT hood		SKINTOP® gland	
	part number	plastic	plastic	metal
Top entry				
1"	101550NP-HA	S 1101	53112044	53112044
1 1/4"	101560NP-HA	—	53112054	53112054
Side entry				
1"	101580NP-HA	S 1101	53112044	53112044
1 1/4"	101590NP-HA	—	53112054	53112054

NPT hood provided with NPT fitting

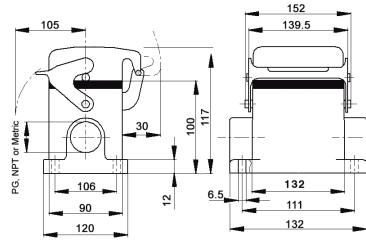
metric

size	Metric hood*		SKINTOP® gland	
	part number	plastic	plastic	metal
Top entry				
M32	191550HA	53111040	53111040	53112040
M40	191560HA	53111050	53111050	53112050
M50	191570HA	53111060	53111060	53112060
Side entry				
M32	191580HA	53111040	53111040	53112040
M40	191590HA	53111050	53111050	53112050
M50	191600HA	53111060	53111060	53112060

* Metric hoods do not come with a neck

EPIC® HA 64 surface mount base

Surface mount base with single lever



all dimensions are in mm

Technical data

IP Protection class: NEMA 4, NEMA 12
IP65

Complete the installation

 HA dust covers
page 429

Approvals

PG

PG base size	PG base part number	Dust cover	SKINTOP® gland	
			plastic	metal
One entry				
29	101650HA	no	53015060	52015760
29	101670HA	yes	53015060	52015760
36	101651HA	no	53015070	52105765
36	101671HA	yes	53015070	52015765
Two entries				
29	101660HA	no	53015060	52015760
29	101680HA	yes	53015060	52015760
36	101661HA	no	53015070	52105765
36	101681HA	yes	53015070	52015765

PG base provided with EPIC® SM/SP gland

NPT

NPT base size	NPT base part number	Dust cover	SKINTOP® gland	
			plastic	metal
One entry				
1"	101650NP-HA	no	S 1101	53112044
1"	101670NP-HA	yes	S 1101	53112044
1¼"	101651NP-HA	no	—	53112054
1¼"	101671NP-HA	yes	—	53112054
Two entries				
1"	101660NP-HA	no	S 1101	53112044
1"	101680NP-HA	yes	S 1101	53112044
1¼"	101661NP-HA	no	—	53112054
1¼"	101681NP-HA	yes	—	53112054

NPT base provided with NPT fitting

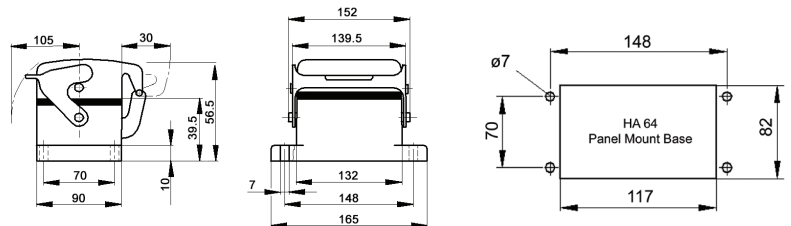
metric

Metric base* size	Metric base* part number	Dust cover	SKINTOP® gland	
			plastic	metal
One entry				
32	191650HA	no	53111040	53112040
32	191670HA	yes	53111040	53112040
40	191651HA	no	53111050	53112050
40	191671HA	yes	53111050	53112050
Two entries				
32	191660HA	no	53111040	53112040
32	191680HA	yes	53111040	53112040
40	191661HA	no	53111050	53112050
40	191681HA	yes	53111050	53112050

* Metric bases do not come with a neck

EPIC® HA 64 panel mount base

Panel mount base with single lever



all dimensions are in mm

Technical data

IP Protection class: NEMA 4, NEMA 12
IP65

Complete the installation

 HA dust covers
page 429

Approvals

Dust cover included	Hardware	Part number
no	—	101610HA
yes	dust cover bolts & hold down screw	101525HA
yes	hold down screw	101520HA

If not otherwise specified, all values relating to the product are nominal values. Photographs are not to scale and are not true representations of the products in question.