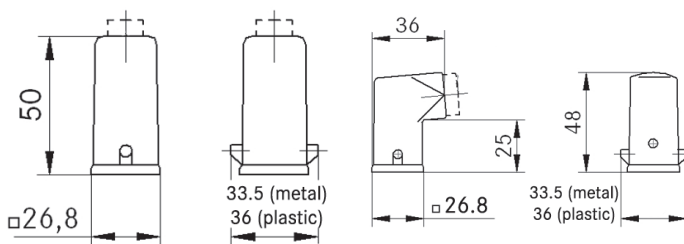


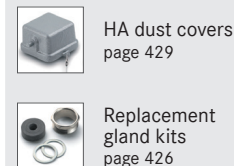
EPIC® HA 3/4 hood

Hood with single lever bolts



all dimensions are in mm

Complete the installation



Technical data	
IP Protection class:	UL 50E Type 4, 12 IP65



PG

Size	Material	Part number	
		with gland	without gland
Top entry			
PG 11	die-cast zinc	10426500	10512100
PG 11	black plastic	10426700	10425500
PG 11	gray plastic	10426400	10426000
Side entry			
PG 11	die-cast zinc	10427500	10512300
PG 11	black plastic	10620600	10427300
PG 11	gray plastic	10427100	10427000

NPT

Size	Material	Part number
		without gland
Top entry		
1/2"	die-cast zinc	105121NP
1/2"	black plastic	104255NP
1/2"	gray plastic	104260NP
Side entry		
1/2"	die-cast zinc	105123NP
1/2"	black plastic	104273NP
1/2"	gray plastic	104270NP

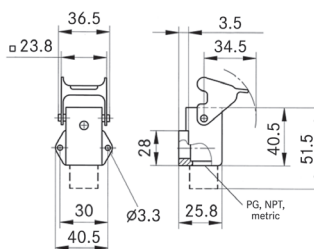
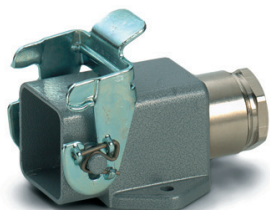
metric

Size	Material	Part number	
		with gland	without gland
Top entry			
M20	die-cast zinc	19426500	19512100
M20	black plastic	—	19425500
M20	gray plastic	—	19426000
Side entry			
M20	die-cast zinc	19427500	19512300
M20	black plastic	—	19427300
M20	gray plastic	—	19427000

NPT hood provided with NPT fitting

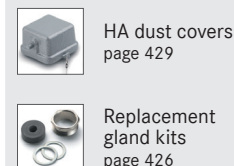
EPIC® HA 3/4 surface mount base

Surface mount base with single lever



all dimensions are in mm

Complete the installation



Technical data	
IP Protection class:	UL 50E Type 4, 12 IP65



PG

Size	Material	Part number	
		with gland	without gland
PG 11	die-cast zinc	10424500	10512700
PG 11	gray plastic	10424200	10424000

NPT

Size	Material	Part number
		without gland
1/2"	die-cast zinc	105127NP
1/2"	gray plastic	104240NP

metric

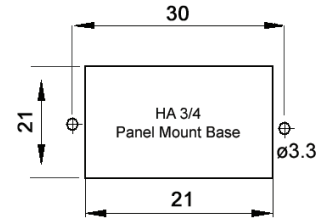
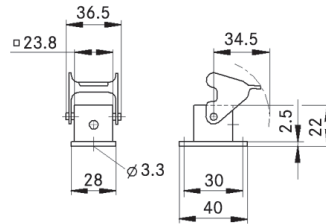
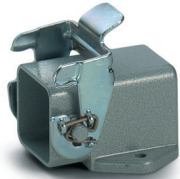
Size	Material	Part number	
		with gland	without gland
M20	die-cast zinc	19424500	19512700
M20	gray plastic	19421900	—

NPT base provided with NPT fitting

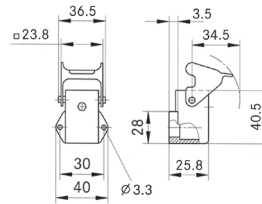
If not otherwise specified, all values relating to the product are nominal values. Photographs are not to scale and are not true representations of the products in question.

EPIC® HA 3/4 panel mount base

Panel mount base with single lever



all dimensions are in mm



Technical data

IP Protection class: UL 50E Type 4, 12
IP65

Description	Dust cover included	Part number		
		die-cast zinc	black plastic	gray plastic
standard base	no	10422500	10422200	10422000
standard base	yes	44429015	—	—
right-angle base	no	10423500	10423100	10423000

Complete the installation



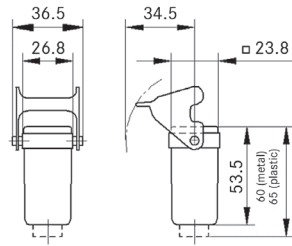
HA dust covers
page 429

Approvals



EPIC® HA 3/4 cable coupler hood

Cable coupler with single lever



all dimensions are in mm

Complete the installation



HA dust covers
page 429



Replacement
gland kits
page 426

Technical data

IP Protection class: UL 50E Type 4, 12
IP65

Approvals



PG

Size	Material	Part number	
		with gland	without gland
PG 11	die-cast zinc	10429500	10512900
PG 11	black plastic	10620300	10429200
PG 11	gray plastic	10429100	10429000

NPT

Size	Material	Part number
		without gland
1/2"	die-cast zinc	105129NP
1/2"	black plastic	104292NP
1/2"	gray plastic	104290NP

NPT coupler provided with NPT fitting

metric

Size	Material	Part number
		without gland
M20	die-cast zinc	19512900
M20	black plastic	19429200
M20	gray plastic	19429000