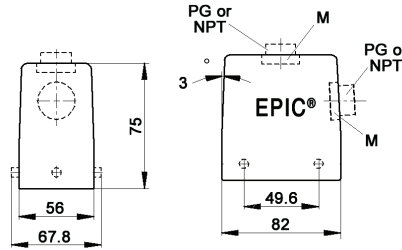


EPIC® HA 32 standard hood

Hood with double lever bolts



all dimensions are in mm

Technical data

IP Protection class: NEMA 4, NEMA 12
IP65

Complete the installation

 HA dust covers
page 429

Approvals

PG

PG hood		SKINTOP® gland	
size	part number	plastic	metal
Top entry			
PG 21	105820	53015050	52015750
PG 29	105830	53015060	52015760
Side entry			
PG 21	105760	53015050	52015750
PG 29	105770	53015060	52015760

PG hood provided with EPIC® SM/SP gland

NPT

NPT hood		SKINTOP® gland	
size	part number	plastic	metal
Top entry			
¾"	105820NP	S1134	53112034
1"	105830NP	S1101	53112044
Side entry			
¾"	105760NP	S1134	53112034
1"	105770NP	S1101	53112044

NPT hood provided with NPT fitting

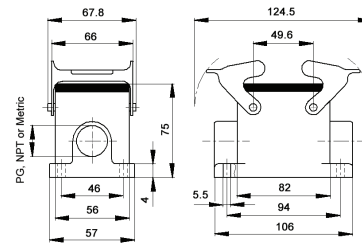
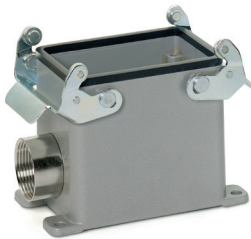
metric

Metric hood*		SKINTOP® gland	
size	part number	plastic	metal
Top entry			
M25	19582000	53111030	53112030
M32	19583000	53111040	53112040
M40	79520600	53111050	53112050
Side entry			
M25	19576000	53111030	53112030
M32	19577000	53111040	53112040
M40	19577500	53111050	53112050

* Metric hoods do not come with a neck

EPIC® HA 32 surface mount base

Surface mount base with double levers



all dimensions are in mm

Technical data

IP Protection class: NEMA 4, NEMA 12
IP65

Complete the installation

 HA dust covers
page 429

Approvals

PG

PG base		SKINTOP® gland	
size	part number	plastic	metal
One entry			
PG 21	104740	53015050	52015750
PG 29	104741	53015060	52015760
Two entries			
PG 21	104820	53015050	52015750
PG 29	104821	53015060	52015760

PG base provided with EPIC® SM/SP gland

NPT

NPT base		SKINTOP® gland	
size	part number	plastic	metal
One entry			
¾"	104740NP	S1134	53112034
1"	104741NP	S1101	53112044
Two entries			
¾"	104820NP	S1134	53112034
1"	104821NP	S1101	53112044

NPT base provided with NPT fitting

metric

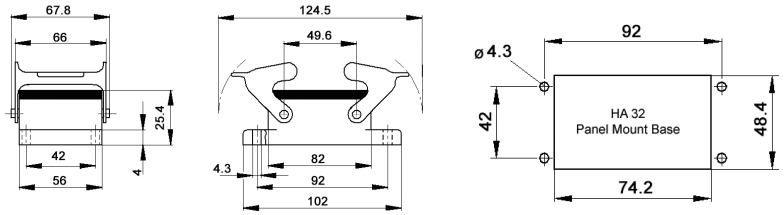
Metric base*		SKINTOP® gland	
size	part number	plastic	metal
One entry			
M25	19474000	53111030	53112030
M32	19474100	53111040	53112040
Two entries			
M25	19482000	53111030	53112030
M32	19482100	53111040	53112040
M40	79506800	53111050	53112050

* Metric bases do not come with a neck

If not otherwise specified, all values relating to the product are nominal values.
Photographs are not to scale and are not true representations of the products in question.

EPIC® HA 32 panel mount base

Panel mount base with double levers



all dimensions are in mm

Technical data

IP Protection class: NEMA 4, NEMA 12
IP65

Complete the installation



HA dust covers
page 429

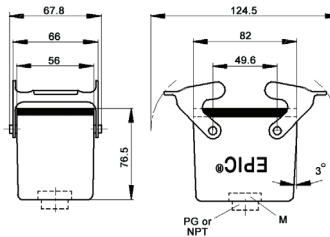
Approvals



Dust cover included	Part number
no	104720C0

EPIC® HA 32 cable coupler hoods

Cable coupler with double levers



all dimensions are in mm

Technical data

IP Protection class: NEMA 4, NEMA 12
IP65

Complete the installation



HA dust covers
page 429

Approvals



PG

PG coupler		SKINTOP® gland	
size	part number	plastic	metal
Standard profile			
PG 21	105880	53015050	52015750
PG 29	105885	53015060	52015760

PG coupler provided with EPIC® SM/SP gland

NPT

NPT coupler		SKINTOP® gland	
size	part number	plastic	metal
Standard profile			
¾"	105880NP	S 1134	53112034
1"	105885NP	S 1101	53112044

NPT coupler provided with NPT fitting

metric

Metric coupler*		SKINTOP® gland	
size	part number	plastic	metal
Standard profile			
M25	19588000	53111030	53112030
M32	19588500	53112030	53112040

* Metric couplers do not come with a neck