

## M 12 CAT.6A field wireable connectors



### Application advantage

- Easy on-site assembly
- For 10 Gbit/sec data transmission acc. to CAT.6A
- Can be used for Power over Ethernet applications
- Robust and vibration resistant

### Technical data

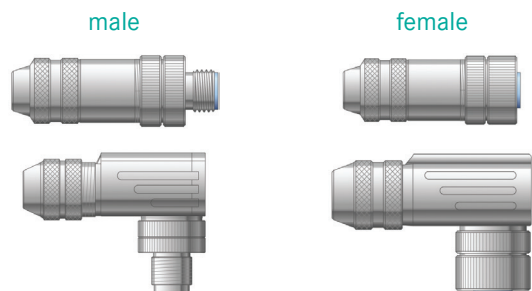
🌡️ Temperature range:	-40°C to +85°C
⚡ Nominal voltage:	48V
📶 Nominal current:	0.5A
Ω Contact resistance:	100 mΩ

Part number	Connector	Number of positions	Coding	Fast connect	Conductor size		Cable outer diameter	
					stranded	solid	in	mm
21700602	male M12	8	X-coded	yes	27 - 22 AWG (7 wire)	24 - 22 AWG	0.197 - 0.382	5.0 - 9.7

### Approvals



## M 12 field wireable connectors for PROFINET®



### Technical data

🌡️ Temperature range:	-40°C to +85°C
⚡ Nominal voltage:	250V
📶 Nominal current:	4A
☺ Coding:	D-coded

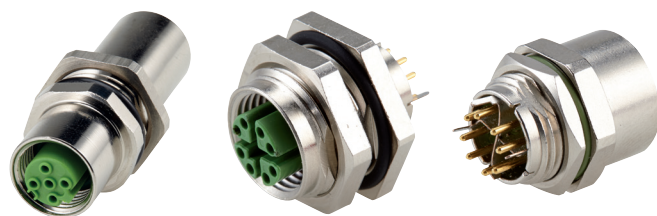
Part number		Connector design	Number of positions	Thread size	Fast connect
male	female				
C5E203C	C5E202C	straight	4	PG 9	yes
C5E205C	C5E204C	90°	4	PG 9	yes

## M 12 FT IE

22262022

21700617

21700618



### Application advantage

- Designs for front and rear wall mounting
- Die-cast zinc housing
- IP67 protection

### Approvals



Part number	Description	Number of positions	Coding
22262022	feed through connector	4	D-coded
21700617	front panel mount connector	8	X-coded
21700618	rear panel mount connector	8	X-coded

PROFINET® is a registered trademark of the PNO (PROFIBUS User Organization).  
 If not otherwise specified, all values relating to the product are nominal values.  
 Photographs are not to scale and are not true representations of the products in question.