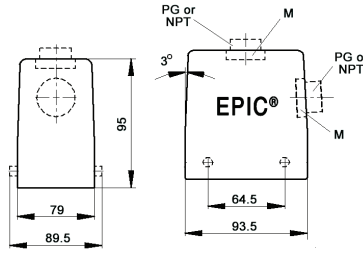


# EPIC® HB 32 standard hood

Hood with double lever bolts



all dimensions are in mm

### Technical data

**IP Protection class:** NEMA 4, NEMA 12  
IP65

### Complete the installation



HB dust covers  
page 429

### Approvals



### PG

PG hood		SKINTOP® gland	
size	part number	plastic	metal
<b>Top entry</b>			
PG 21	101330	53015050	52015750
PG 29	101340	53015060	52015760
<b>Side entry</b>			
PG 21	101350	53015050	52015750
PG 29	101360	53015060	52015760

PG hood provided with EPIC® SM/SP gland

### NPT

NPT hood		SKINTOP® gland	
size	part number	plastic	metal
<b>Top entry</b>			
3/4"	101330NP	S 1134	53112034
1"	101340NP	S 1101	53112044
1 1/4"	101343NP	—	53112054
<b>Side entry</b>			
3/4"	101350NP	S 1134	53112034
1"	101360NP	S 1101	53112044

NPT hood provided with NPT fitting

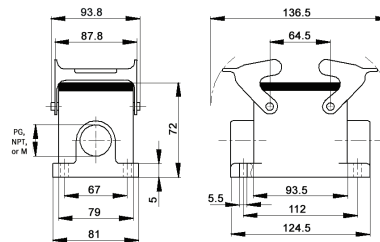
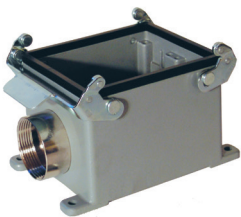
### metric

Metric hood		SKINTOP® gland	
size	part number	plastic	metal
<b>Top entry*</b>			
M25x2	44422022	53111030	53112030
M32	19134000	53111040	53112040
M32x2	44422023	53111040	53112040
M40	19134400	53111050	53112050
<b>Side entry</b>			
M25	19135000	53111030	53112030
M32	19136000	53111040	53112040
M40	19136200	53111050	53112050

\* Metric top-entry hoods do not come with a neck

# EPIC® HB 32 surface mount base

Surface mount base with double levers



all dimensions are in mm

### Technical data

**IP Protection class:** NEMA 4, NEMA 12  
IP65

### Complete the installation



HB dust covers  
page 429

### Approvals



### PG

PG base		SKINTOP® gland	
size	part number	plastic	metal
<b>One entry</b>			
PG 29	101370	53015060	52015760
<b>Two entries</b>			
PG 29	101380	53015060	52015760

PG base provided with EPIC® SM/SP gland

### NPT

NPT base		SKINTOP® gland	
size	part number	plastic	metal
<b>One entry</b>			
1"	101370NP	S 1101	53112044
<b>Two entries</b>			
1"	101380NP	S 1101	53112044

NPT base provided with NPT fitting

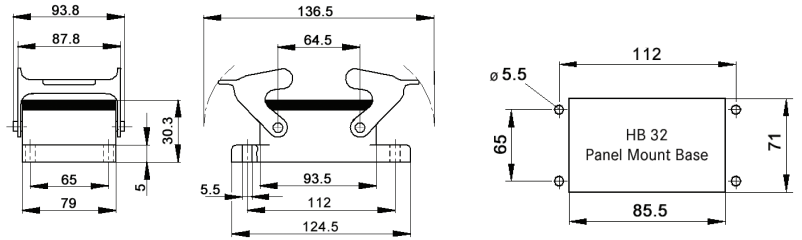
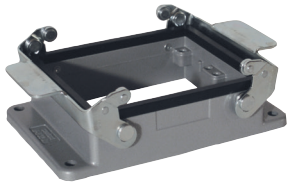
### metric

Metric base		SKINTOP® gland	
size	part number	plastic	metal
<b>One entry</b>			
M32	19137000	53111040	53112040
M40	19145400	53111050	53112050
<b>Two entries</b>			
M32	19138000	53111040	53112040
M40	19146400	53111050	53112050

Recommended SKINTOP® assumes minimal OD variance. Additional configurations are available; please see our SKINTOP® section.  
If not otherwise specified, all values relating to the product are nominal values.  
Photographs are not to scale and are not true representations of the products in question.

## EPIC® HB 32 panel mount base

Panel mount base with double levers



all dimensions are in mm

Technical data	
<b>IP Protection class:</b>	NEMA 4, NEMA 12 IP65

**Complete the installation**

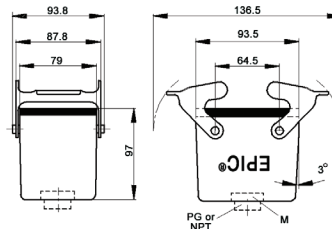
HB dust covers  
page 429

**Approvals**

Dust cover included	Part number
no	101320C0

## EPIC® HB 32 cable coupler hood

Cable coupler with double levers



all dimensions are in mm

Technical data	
<b>IP Protection class:</b>	NEMA 4, NEMA 12 IP65

**Complete the installation**

HB dust covers  
page 429

**Approvals**

**PG**

PG coupler size	PG coupler part number	SKINTOP® gland	
		plastic	metal
PG 21	101390	53015050	52015750
PG 29	101395	53015060	52015760

PG coupler provided with EPIC® SM/SP gland

**NPT**

NPT coupler size	NPT coupler part number	SKINTOP® gland	
		plastic	metal
3/4"	101390NP	S1134	53112034
1"	101395NP	S1101	53112044

NPT coupler provided with NPT fitting

**metric**

Metric coupler size	Metric coupler part number	SKINTOP® gland	
		plastic	metal
M32	19139500	53111040	53112040

Metric couplers do not come with a neck

Recommended SKINTOP® assumes minimal OD variance. Additional configurations are available; please see our SKINTOP® section. If not otherwise specified, all values relating to the product are nominal values. Photographs are not to scale and are not true representations of the products in question.