

Product Datasheet

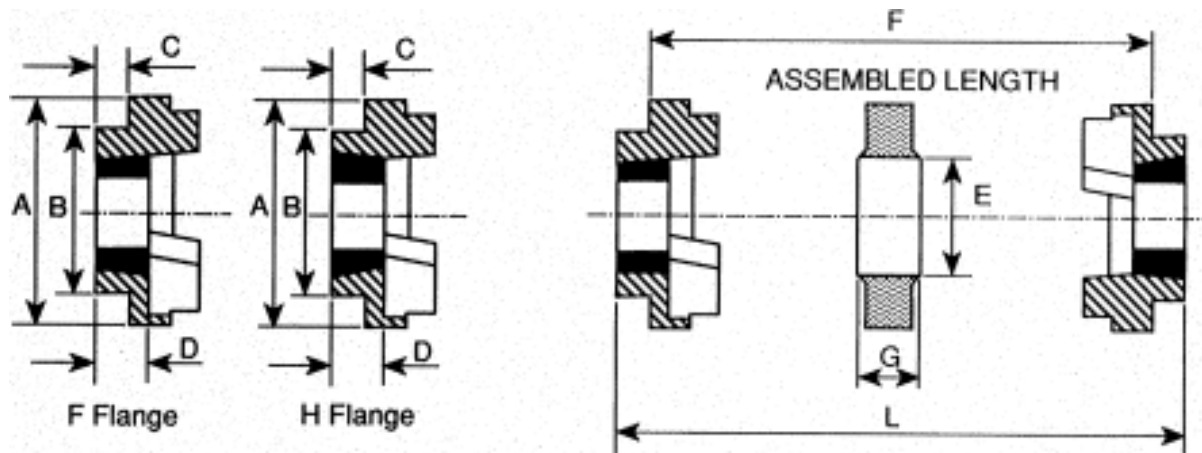
RS- HRC Coupling Inserts, F and H Flange Type



RS Coupling Inserts

HRC semi elastic couplings for general purpose use and available as F flange type, bush mounted from inside, and H flange bush, inserted from outside face. Taper bush fixing allows quick and easy assembly and alignment can be checked easily using a straightedge. Inserts are made from standard nitrile rubber. HRC couplings can accommodate minor misalignment.

Technical data:



RS Stock	Size (mm)	Max Bore Size (mm)	A (mm)	B (mm)	C (mm)	D (mm)	Bush Type	E (mm)	F (mm)	G (mm)	L (mm)
183186	70	25	69	60	20	23.5	1008	-	25	-	65
183192	90	28	85	70	19.5	23.5	1108	-	30.5	-	69.5
183209	110	42	112	100	18.5	26.5	1610	-	45	-	82
184763	130	42	130	105	19	26.5	1610	-	53	-	89
184785	70	25	69	60	20	23.5	1008	-	25	-	65
184735	90	28	85	70	19.5	23.5	1108	-	30.5	-	69.5
184779	110	42	112	100	18.5	26.5	1610	-	45	-	82
184684	130	42	130	105	19	26.5	1610	-	53	-	89
183782	70	25	-	-	-	-	1008	31	25	18	65
183798	90	28	-	-	-	-	1108	32	30.5	22.5	69.5
183805	110	42	-	-	-	-	1610	45	45	29	82
183811	130	42	-	-	-	-	1610	50	53	36	89