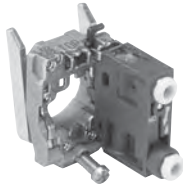
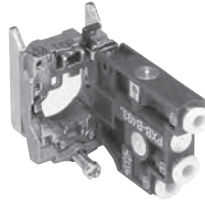


For Use With 22mm (7/8") Metal Operating Heads 5/32" Instant Connections
3/2 Valve Bodies with Mounting Ring



PXBB3111B



PXBB4131B

Part Number	Connections	Function	Type of Switching*
PXBB3111B	5/32" Instant	3/2	NNP
PXBB3121B	5/32" Instant	3/2	NP
PXBB4131B	5/32" Instant	3/2	Universal 3-Way

Note: • Mount up to 3 valves on mounting ring for push buttons.
 • Mount up to 2 valves on mounting ring for selector switches,
 Valves **cannot** be mounted in center position.

Specifications

Air Quality –
 Standard Shop Air, Lubricated or Dry 40 µm Filtration

Flow –
 PXBB3• Cv=.08
 PXBB4• Cv=.18

Materials –
 Body Polyamide
 Operating Head Zinc Alloy & Plastic

Operating Positions..... All Positions

Operating Pressure –
 PXBB3• 15 to 115 PSIG (1 to 9 bar)
 PXBB4• 15 to 145 PSIG (1 to 10 bar)

Ports5/32" Instant for Semi-Rigid Nylon or Polyurethane Tube

Temperature –
 Operating5°F to 140°F (-15°C to + 60°C)

Additional Valve Bodies



PXBB3911



PXBB4932



PXBB4931

Part Number	Connections	Function	Type of Switching*
PXBB3911	5/32" Instant Straight	3/2	NNP
PXBB3912	5/32" Instant Swivel		
PXBB3921	5/32" Instant Straight	3/2	NP
PXBB3922	5/32" Instant Swivel		
PXBB4931	5/32" Instant Straight	3/2	Universal 3-Way
PXBB4932	5/32" Instant Swivel		

BOLD ITEMS ARE MOST POPULAR.

