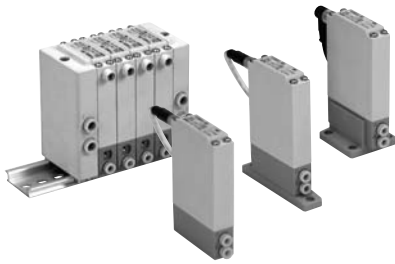


## Specifications



Model		ITV001□	ITV003□	ITV005□
<b>Minimum supply pressure</b>		Set pressure +0.1 MPa		
<b>Maximum supply pressure</b>		0.2 MPa	1.0 MPa	
<b>Set pressure range</b>		0.001 to 0.1 MPa	0.001 to 0.5 MPa	0.001 to 0.9 MPa
<b>Power supply</b>	<b>Voltage</b>	24 VDC ±10%, 12 to 15 VDC		
	<b>Current consumption</b>	Power supply voltage 24 VDC type: 0.12 A or less Power supply voltage 12 to 15 VDC type: 0.18 A or less		
<b>Input signal</b>	<b>Voltage type</b>	0 to 5 VDC, 0 to 10 VDC		
	<b>Current type</b>	4 to 20 mA DC, 0 to 20 mA DC		
<b>Input impedance</b>	<b>Voltage type</b>	Approximately 10 kΩ		
	<b>Current type</b>	Approximately 250 Ω		
<b>Output signal</b>	<b>Analogue output</b>	1 to 5 VDC (Output impedance: Approximately 1 kΩ) Output accuracy: Within ±6% (Full span)		
<b>Linearity</b>		Within ±1% (Full span)		
<b>Hysteresis</b>		Within 0.5% (Full span)		
<b>Repeatability</b>		Within ±0.5% (Full span)		
<b>Sensitivity</b>		Within 0.2% (Full span)		
<b>Temperature characteristics</b>		Within ±0.12% (Full span)/°C		
<b>Operating temperature range</b>		0 to 50°C (No condensation)		
<b>Enclosure</b>		Equivalent to IP65 *		
<b>Connection type</b>		Built-in One-touch fittings		
<b>Connection size</b>	<b>For single unit</b>	Metric size	①, ②, ③: ø4	
		Inch size	①, ②, ③: ø5/32"	
	<b>Manifold</b>	Metric size	①, ③: ø6, ②: ø4	
		Inch size	①, ③: ø1/4", ②: ø5/32"	
<b>Weight</b> <sup>Note 1)</sup>		100 g or less (without option)		

Note 1) Indicates the weight of a single unit.

For IITV00-n

Total weight (g) Stations (n) x 100 + 130 (Weight of end block A, B assembly) + Weight (g) of DIN rail

Note 2) When there is a downstream flow consumption, pressure may become unstable depending on piping conditions.

Note 3) When the power is turned on, a noise may be generated. This noise is normal and does not indicate a fault.

\* When using under the conditions equivalent to IP65, connect the fitting or tube to the breathing hole prior to use. (For details, refer to "Specific Product Precautions 1" on page 41)

## Accessories (Option)

### Bracket

Flat bracket assembly (includes 2 mounting screws)  
P39800022



L-bracket assembly (includes 2 mounting screws)  
P39800023



Tightening torque when assembling is 0.3 N·m.

### Cable connector

Straight type

**M8-4DSX3MG4**



Right angle type

P398000-501-2

