

JUMO GmbH & Co. KG
Delivery address: Mackenrodtstraße 14
36039 Fulda, Germany
Postal address: 36035 Fulda, Germany
Phone: +49 661 6003-0
Fax: +49 661 6003-607
E-mail: mail@jumo.net
Internet: www.jumo.net

JUMO Instrument Co. Ltd.
JUMO House
Temple Bank, Riverway
Harlow, Essex CM20 2DY, UK
Phone: +44 1279 635533
Fax: +44 1279 635262
E-mail: sales@jumo.co.uk
Internet: www.jumo.co.uk

JUMO Process Control, Inc.
6733 Myers Road
East Syracuse, NY 13057, USA
Phone: 315-437-5866
1-800-554-5866
Fax: 315-437-5860
E-mail: info.us@jumo.net
Internet: www.jumousa.com



RTD Temperature Probe for Devices and Plants Tested/ Inspected According to DIN EN 14597

- For heat transmission plants according to DIN 4754
- For temperatures of up to 700 °C
- As single, double, or triple RTD temperature probes
- For water, oil, or air
- For tested control and limitation devices

The RTD temperature probes specified in this data sheet can be used in connection with temperature control and limitation devices tested/inspected according to DIN EN 14597 (DIN 3440) in heat transmission plants according to DIN 4754.

RTD temperature probes are the preferred choice for measuring temperatures in liquids and gases. Application areas include air conditioning and refrigeration technology as well as heating, furnace/kiln, and apparatus engineering.

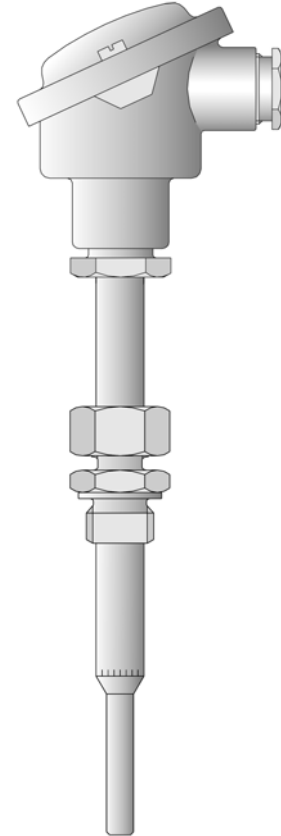
Form B terminal heads are suitable for ambient temperatures up to 100 °C.

Protection tubes made of various materials protect the measuring insert against chemical influences and mechanical damage. The appropriate protection tube material is selected according to the conditions on site.

A Pt100 temperature sensor according to DIN EN 60751, class B is used in the measuring insert in a 2-wire-circuit as standard.

Changes to the described versions require new design approval.

Important information: state the part no. from price sheet 902006 when ordering!



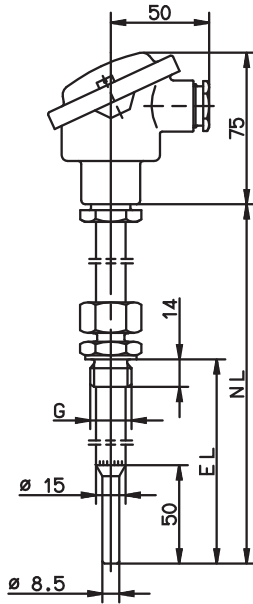
JUMO GmbH & Co. KG
 Delivery address: Mackenrodtstraße 14
 36039 Fulda, Germany
 Postal address: 36035 Fulda, Germany
 Phone: +49 661 6003-0
 Fax: +49 661 6003-607
 E-mail: mail@jumo.net
 Internet: www.jumo.net

JUMO Instrument Co. Ltd.
 JUMO House
 Temple Bank, Riverway
 Harlow, Essex CM20 2DY, UK
 Phone: +44 1279 635533
 Fax: +44 1279 635262
 E-mail: sales@jumo.co.uk
 Internet: www.jumo.co.uk

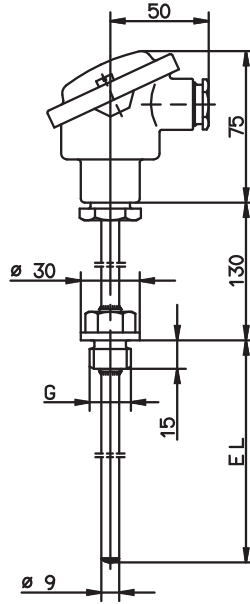
JUMO Process Control, Inc.
 6733 Myers Road
 East Syracuse, NY 13057, USA
 Phone: 315-437-5866
 1-800-554-5866
 Fax: 315-437-5860
 E-mail: info.us@jumo.net
 Internet: www.jumousa.com



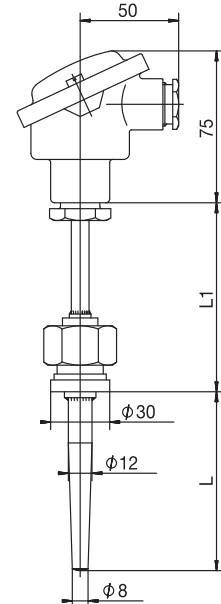
Dimensions



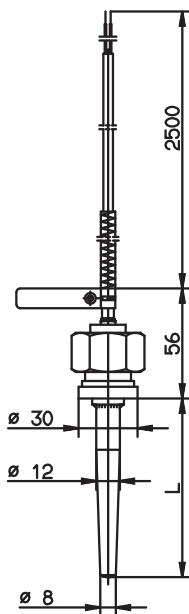
Pos. 1



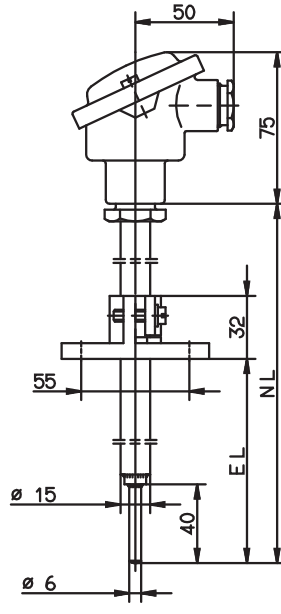
Pos. 2



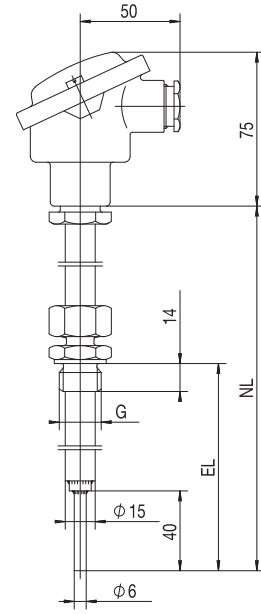
Pos. 3



Pos. 4



Pos. 5



Pos. 6

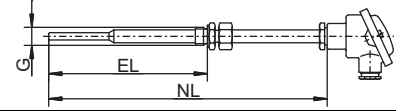
JUMO GmbH & Co. KG
 Delivery address: Mackenrodtstraße 14
 36039 Fulda, Germany
 Postal address: 36035 Fulda, Germany
 Phone: +49 661 6003-0
 Fax: +49 661 6003-607
 E-mail: mail@jumo.net
 Internet: www.jumo.net

JUMO Instrument Co. Ltd.
 JUMO House
 Temple Bank, Riverway
 Harlow, Essex CM20 2DY, UK
 Phone: +44 1279 635533
 Fax: +44 1279 635262
 E-mail: sales@jumo.co.uk
 Internet: www.jumo.co.uk

JUMO Process Control, Inc.
 6733 Myers Road
 East Syracuse, NY 13057, USA
 Phone: 315-437-5866
 1-800-554-5866
 Fax: 315-437-5860
 E-mail: info.us@jumo.net
 Internet: www.jumousa.com



Push-in RTD temperature probe with pipe screw connection and terminal head, according to DIN 43729, form B, M 24 × 1.5



Insertion length EL in mm	Nominal length NL in mm	Thread G in inches	Temperature range in °C	Type up to February 28, 2013 1× Pt100	Type up to February 28, 2013 2× Pt100	Type as of March 01, 2013 Order code
------------------------------	----------------------------	-----------------------	-------------------------	--	--	---

Stainless steel protection tube X 6 CrNiMoTi 17 12 2, material-no. 1.4571

65 to 670	710	G 1/2	-170 to +550	90.272-F03	-	902006/54-227-1003-1-15-710-254/000
65 to 670	710	G 1/2	-170 to +550	-	90.272-F02	902006/54-227-2003-1-15-710-254/000

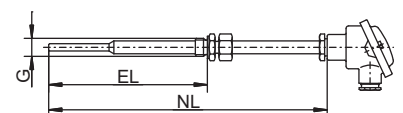
Important information: Please observe the internal lead wire resistance with respect to the operating temperature; see the final page for the resistance values.

Operating media: water and oil

Operating pressure: max. 27 bar up to 100 °C, 20 bar up to 400 °C, pressureless as of 400 °C

Pos. 1

Versions only for connecting a JUMO safetyM STB/STW Ex type 701155



Insertion length EL in mm	Nominal length NL in mm	Thread G in inches	Temperature range in °C	1× Pt100	2× Pt100	Type Order code
------------------------------	----------------------------	-----------------------	-------------------------	----------	----------	--------------------

Stainless steel protection tube X 6 CrNiMoTi 17 12 2, material-no. 1.4571

65 to 670	710	G 1/2	-170 to +550	x	-	902006/54-227-1003-1-15-710-254/922
65 to 670	710	G 1/2	-170 to +550	-	x	902006/54-227-2003-1-15-710-254/922

Important information: Please observe the internal lead wire resistance with respect to the operating temperature; see the final page for the resistance values.

Operating media: water and oil

Operating pressure: max. 27 bar up to 100 °C, 20 bar up to 400 °C, pressureless as of 400 °C

Pos. 1

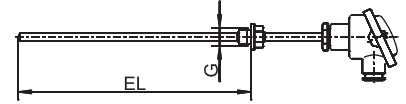
JUMO GmbH & Co. KG
 Delivery address: Mackenrodtstraße 14
 36039 Fulda, Germany
 Postal address: 36035 Fulda, Germany
 Phone: +49 661 6003-0
 Fax: +49 661 6003-607
 E-mail: mail@jumo.net
 Internet: www.jumo.net

JUMO Instrument Co. Ltd.
 JUMO House
 Temple Bank, Riverway
 Harlow, Essex CM20 2DY, UK
 Phone: +44 1279 635533
 Fax: +44 1279 635262
 E-mail: sales@jumo.co.uk
 Internet: www.jumo.co.uk

JUMO Process Control, Inc.
 6733 Myers Road
 East Syracuse, NY 13057, USA
 Phone: 315-437-5866
 1-800-554-5866
 Fax: 315-437-5860
 E-mail: info.us@jumo.net
 Internet: www.jumousa.com



**Screw-in RTD temperature probe
 according to DIN 43765, form B
 and terminal head according to DIN 43729, form B, M24 × 1.5**



Insertion length EL in mm	Thread G in inches	Temperature range in °C	Type up to February 28, 2013 1× Pt100	Type up to February 28, 2013 2× Pt100	Type as of March 01, 2013 Order code
------------------------------	-----------------------	-------------------------	--	--	---

Steel protection tube St 35.8, material-no. 1.0305

250	G 1/2	-170 to +480	90.239 ●	-	902006/10-226-1003-1-9-250-104/000 ●
250	G 1/2	-170 to +480	-	90D239	902006/10-226-2003-1-9-250-104/000

Stainless steel protection tube X 6 CrNiMoTi 17 12 2, material-no. 1.4571

100	G 1/2	-40 to +400	902006/10-402-1003	-	902006/10-402-1003-1-9-100-104/000
150	G 1/2	-40 to +400	x	-	902006/10-402-1003-1-9-150-104/000
200	G 1/2	-40 to +400	x	-	902006/10-402-1003-1-9-200-104/000
100	G 1/2	-40 to +400	-	902006/10-402-2003	902006/10-402-2003-1-9-100-104/000
150	G 1/2	-40 to +400	-	x	902006/10-402-2003-1-9-150-104/000
200	G 1/2	-40 to +400	-	x	902006/10-402-2003-1-9-200-104/000

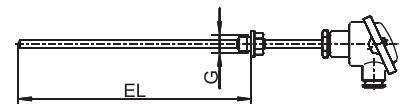
Operating media: water and oil

Operating pressure: max. 35 bar up to 100 °C, 20 bar up to 400 °C, pressureless as of 400 °C

● Available from stock.

Pos. 2

**Versions only for connecting a
 JUMO safetyM STB/STW Ex type 701155**



Insertion length EL in mm	Thread G in inches	Temperature range in °C	1× Pt100	2× Pt100	Type Order code
------------------------------	-----------------------	-------------------------	----------	----------	--------------------

Steel protection tube St 35.8, material-no. 1.0305

250	G 1/2	-170 to +480	x	-	902006/10-226-1003-1-9-250-104/922
250	G 1/2	-170 to +480	-	x	902006/10-226-2003-1-9-250-104/922

Stainless steel protection tube X 6 CrNiMoTi 17 12 2, material-no. 1.4571

100	G 1/2	-40 to +400	x	-	902006/10-402-1003-1-9-100-104/922
150	G 1/2	-40 to +400	x	-	902006/10-402-1003-1-9-150-104/922
200	G 1/2	-40 to +400	x	-	902006/10-402-1003-1-9-200-104/922
100	G 1/2	-40 to +400	-	x	902006/10-402-2003-1-9-100-104/922
150	G 1/2	-40 to +400	-	x	902006/10-402-2003-1-9-150-104/922
200	G 1/2	-40 to +400	-	x	902006/10-402-2003-1-9-200-104/922

Operating media: water and oil

Operating pressure: max. 35 bar up to 100 °C, 20 bar up to 400 °C, pressureless as of 400 °C

Pos. 2

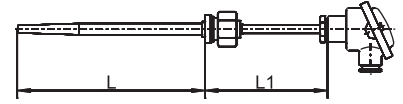
JUMO GmbH & Co. KG
 Delivery address: Mackenrodtstraße 14
 36039 Fulda, Germany
 Postal address: 36035 Fulda, Germany
 Phone: +49 661 6003-0
 Fax: +49 661 6003-607
 E-mail: mail@jumo.net
 Internet: www.jumo.net

JUMO Instrument Co. Ltd.
 JUMO House
 Temple Bank, Riverway
 Harlow, Essex CM20 2DY, UK
 Phone: +44 1279 635533
 Fax: +44 1279 635262
 E-mail: sales@jumo.co.uk
 Internet: www.jumo.co.uk

JUMO Process Control, Inc.
 6733 Myers Road
 East Syracuse, NY 13057, USA
 Phone: 315-437-5866
 1-800-554-5866
 Fax: 315-437-5860
 E-mail: info.us@jumo.net
 Internet: www.jumousa.com



**Screw-in RTD temperature probe
 with weld-in sleeve and terminal head
 according to DIN 43729, form B, M24 × 1.5**



Insertion length ^a EL in mm	Length L in mm	Length L1 in mm	Temperature range in °C	Type up to February 28, 2013	Type up to February 28, 2013	Type up to February 28, 2013	Type as of March 01, 2013
				1× Pt100	2× Pt100	3× Pt100	Order code

Steel welding shoulder 15 Mo 3, material-no. 1.5415
 Steel protection tube St 35.8, material-no. 1.0305

100	80	96	-40 to +480	90.239-F01	-	-	902006/53-507-1003-1-12-100-815/000
160	140	96	-40 to +480	90.239-F11	-	-	902006/53-507-1003-1-12-160-815/000
190	170	146	-40 to +400	90.239-F03	-	-	902006/53-505-1003-1-12-190-815/000
220	200	96	-40 to +480	90.239-F21 ●	-	-	902006/53-507-1003-1-12-220-815/000 ●
100	80	96	-40 to +480	-	90.239-F02 ●	-	902006/53-507-2003-1-12-100-815/000 ●
160	140	96	-40 to +480	-	90.239-F12	-	902006/53-507-2003-1-12-160-815/000
190	170	146	-40 to +400	-	90D239-F03 ●	-	902006/53-505-2003-1-12-190-815/000 ●
220	200	96	-40 to +480	-	902006/ 53-507-2003 ●	-	902006/53-507-2003-1-12-220-815/000 ●
100	80	96	-40 to +400	-	-	90.239-F07	902006/53-505-3003-1-12-100-815/000
160	140	96	-40 to +400	-	-	90.239-F17	902006/53-505-3003-1-12-160-815/000
220	200	96	-40 to +400	-	-	90.239-F27	902006/53-505-3003-1-12-220-815/000

Operating media: water and oil

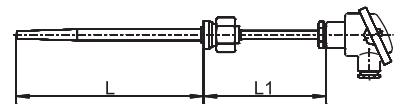
Operating pressure: max. 103 bar up to 100 °C, 30 bar up to 480 °C

● Available from stock.

Pos. 3

^a Insertion length of the RTD temperature probe

Versions only for connecting a
 JUMO safetyM STB/STW Ex type 701155



Insertion length ^a EL in mm	Length L in mm	Length L1 in mm	Temperature range in °C	1× Pt100	2× Pt100	3× Pt100	Type Order code
				x	x	x	

Steel welding shoulder 15 Mo 3, material-no. 1.5415
 Steel protection tube St 35.8, material-no. 1.0305

100	80	96	-40 to +480	x	-	-	902006/53-507-1003-1-12-100-815/922
160	140	96	-40 to +480	x	-	-	902006/53-507-1003-1-12-160-815/922
190	170	146	-40 to +400	x	-	-	902006/53-505-1003-1-12-190-815/922
220	200	96	-40 to +480	x	-	-	902006/53-507-1003-1-12-220-815/922
100	80	96	-40 to +480	-	x	-	902006/53-507-2003-1-12-100-815/922
160	140	96	-40 to +480	-	x	-	902006/53-507-2003-1-12-160-815/922
190	170	146	-40 to +400	-	x	-	902006/53-505-2003-1-12-190-815/922
220	200	96	-40 to +480	-	x	-	902006/53-507-2003-1-12-220-815/922
100	80	96	-40 to +400	-	-	x	902006/53-505-3003-1-12-100-815/922
160	140	96	-40 to +400	-	-	x	902006/53-505-3003-1-12-160-815/922
220	200	96	-40 to +400	-	-	x	902006/53-505-3003-1-12-220-815/922

Operating media: water and oil

Operating pressure: max. 103 bar up to 100 °C, 30 bar up to 480 °C

Pos. 3

^a Insertion length of the RTD temperature probe

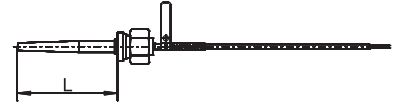
JUMO GmbH & Co. KG
 Delivery address: Mackenrodtstraße 14
 36039 Fulda, Germany
 Postal address: 36035 Fulda, Germany
 Phone: +49 661 6003-0
 Fax: +49 661 6003-607
 E-mail: mail@jumo.net
 Internet: www.jumo.net

JUMO Instrument Co. Ltd.
 JUMO House
 Temple Bank, Riverway
 Harlow, Essex CM20 2DY, UK
 Phone: +44 1279 635533
 Fax: +44 1279 635262
 E-mail: sales@jumo.co.uk
 Internet: www.jumo.co.uk

JUMO Process Control, Inc.
 6733 Myers Road
 East Syracuse, NY 13057, USA
 Phone: 315-437-5866
 1-800-554-5866
 Fax: 315-437-5860
 E-mail: info.us@jumo.net
 Internet: www.jumousa.com



**Screw-in RTD temperature probe
 with weld-in sleeve and stainless steel braided
 0.35 mm² connecting cable and anti-kink protection**



Insertion length ^a EL in mm	Length L in mm	Temperature range in °C	Type up to February 28, 2013 1× Pt100	Type as of March 01, 2013	Order code
---	-------------------	-------------------------	--	---------------------------	------------

Steel welding shoulder 15 Mo 3, material-no. 1.5415
 Steel protection tube St 35.8, material-no. 1.0305

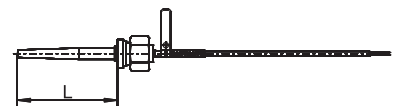
100	80	-170 to +480	90.280-F32		902006/40-226-1003-1-12-100-815/000
160	140	-170 to +480	90.280-F31		902006/40-226-1003-1-12-160-815/000
220	200	-170 to +480	90.280-F30		902006/40-226-1003-1-12-220-815/000

Operating media: water and oil
 Operating pressure: max. 103 bar up to 100 °C, 30 bar up to 480 °C

Pos. 4

^a Insertion length of the RTD temperature probe

Versions only for connecting a
 JUMO safetyM STB/STW Ex type 701155



Insertion length ^a EL in mm	Length L in mm	Temperature range in °C	1× Pt100	Type	Order code
---	-------------------	-------------------------	----------	------	------------

Steel welding shoulder 15 Mo 3, material-no. 1.5415
 Steel protection tube St 35.8, material-no. 1.0305

100	80	-170 to +480	x		902006/40-226-1003-1-12-100-815/922
160	140	-170 to +480	x		902006/40-226-1003-1-12-160-815/922
220	200	-170 to +480	x		902006/40-226-1003-1-12-220-815/922

Operating media: water and oil
 Operating pressure: max. 103 bar up to 100 °C, 30 bar up to 480 °C

Pos. 4

^a Insertion length of the RTD temperature probe

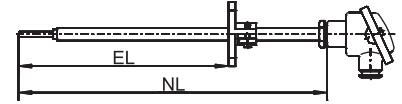
JUMO GmbH & Co. KG
 Delivery address: Mackenrodtstraße 14
 36039 Fulda, Germany
 Postal address: 36035 Fulda, Germany
 Phone: +49 661 6003-0
 Fax: +49 661 6003-607
 E-mail: mail@jumo.net
 Internet: www.jumo.net

JUMO Instrument Co. Ltd.
 JUMO House
 Temple Bank, Riverway
 Harlow, Essex CM20 2DY, UK
 Phone: +44 1279 635533
 Fax: +44 1279 635262
 E-mail: sales@jumo.co.uk
 Internet: www.jumo.co.uk

JUMO Process Control, Inc.
 6733 Myers Road
 East Syracuse, NY 13057, USA
 Phone: 315-437-5866
 1-800-554-5866
 Fax: 315-437-5860
 E-mail: info.us@jumo.net
 Internet: www.jumousa.com



**Push-in RTD temperature probe
 with displaceable stop flange and terminal head
 according to DIN 43729, form B, M24 × 1.5**



Insertion length EL in mm	Nominal length NL in mm	Temperature range in °C	Type up to February 28, 2013 1× Pt100	Type up to February 28, 2013 2× Pt100	Type as of March 01, 2013 Order code
------------------------------	----------------------------	-------------------------	--	--	---

Stainless steel protection tube X 6 CrNiMoTi 17 12 2, material-no. 1.4571

50 to 460	500	-170 to +700	x	-	902006/65-228-1003-1-15-500-668/000
50 to 670	710	-170 to +700	x	-	902006/65-228-1003-1-15-710-668/000
50 to 960	1000	-170 to +700	x	-	902006/65-228-1003-1-15-1000-668/000
50 to 460	500	-170 to +700	-	90.271-F01	902006/65-228-2003-1-15-500-668/000 ●
50 to 670	710	-170 to +700	-	90.272-F01	902006/65-228-2003-1-15-710-668/000
50 to 960	1000	-170 to +700	-	90.273-F01	902006/65-228-2003-1-15-1000-668/000

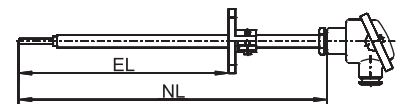
Important information: Please observe the internal lead wire resistance with respect to the operating temperature; see the final page for the resistance values.

Operating medium: air

● Available from stock.

Pos. 5

**Versions only for connecting a
 JUMO safetyM STB/STW Ex type 701155**



Insertion length EL in mm	Nominal length NL in mm	Temperature range in °C	1× Pt100	2× Pt100	Type Order code
------------------------------	----------------------------	-------------------------	----------	----------	--------------------

Stainless steel protection tube X 6 CrNiMoTi 17 12 2, material-no. 1.4571

50 to 460	500	-170 to +700	x	-	902006/65-228-1003-1-15-500-668/922
50 to 670	710	-170 to +700	x	-	902006/65-228-1003-1-15-710-668/922
50 to 960	1000	-170 to +700	x	-	902006/65-228-1003-1-15-1000-668/922
50 to 460	500	-170 to +700	-	x	902006/65-228-2003-1-15-500-668/922
50 to 670	710	-170 to +700	-	x	902006/65-228-2003-1-15-710-668/922
50 to 960	1000	-170 to +700	-	x	902006/65-228-2003-1-15-1000-668/922

Important information: Please observe the internal lead wire resistance with respect to the operating temperature; see the final page for the resistance values.

Operating medium: air

Pos. 5

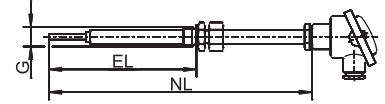
JUMO GmbH & Co. KG
 Delivery address: Mackenrodtstraße 14
 36039 Fulda, Germany
 Postal address: 36035 Fulda, Germany
 Phone: +49 661 6003-0
 Fax: +49 661 6003-607
 E-mail: mail@jumo.net
 Internet: www.jumo.net

JUMO Instrument Co. Ltd.
 JUMO House
 Temple Bank, Riverway
 Harlow, Essex CM20 2DY, UK
 Phone: +44 1279 635533
 Fax: +44 1279 635262
 E-mail: sales@jumo.co.uk
 Internet: www.jumo.co.uk

JUMO Process Control, Inc.
 6733 Myers Road
 East Syracuse, NY 13057, USA
 Phone: 315-437-5866
 1-800-554-5866
 Fax: 315-437-5860
 E-mail: info.us@jumo.net
 Internet: www.jumousa.com



Screw-in RTD temperature probe with pipe screw connection and terminal head, according to DIN 43729, form B, M 24 × 1.5



Insertion length EL in mm	Thread G in inches	Nominal length NL in mm	Temperature range in °C	Type up to February 28, 2013 1× Pt100	Type up to February 28, 2013 2× Pt100	Type as of March 01, 2013 Order code
------------------------------	-----------------------	----------------------------	-------------------------	--	--	---

Stainless steel protection tube X 6 CrNiMoTi 17 12 2, material-no. 1.4571

50 to 460	G 1/2	500	-170 to +700	x	-	902006/55-228-1003-1-15-500-254/000
50 to 670	G 1/2	710	-170 to +700	x	-	902006/55-228-1003-1-15-710-254/000
50 to 960	G 1/2	1000	-170 to +700	x	-	902006/55-228-1003-1-15-1000-254/000
50 to 460	G 1/2	500	-170 to +700	-	x	902006/55-228-2003-1-15-500-254/000 ●
50 to 670	G 1/2	710	-170 to +700	-	x	902006/55-228-2003-1-15-710-254/000
50 to 960	G 1/2	1000	-170 to +700	-	x	902006/55-228-2003-1-15-1000-254/000

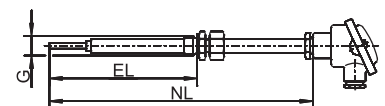
Important information: Please observe the internal lead wire resistance with respect to the operating temperature; see the final page for the resistance values.

Operating medium: air

● Available from stock.

Pos. 6

Versions only for connecting a JUMO safetyM STB/STW Ex type 701155



Insertion length EL in mm	Thread G in inches	Nominal length NL in mm	Temperature range in °C	1× Pt100	2× Pt100	Type Order code
------------------------------	-----------------------	----------------------------	-------------------------	----------	----------	--------------------

Stainless steel protection tube X 6 CrNiMoTi 17 12 2, material-no. 1.4571

50 to 460	G 1/2	500	-170 to +700	x	-	902006/55-228-1003-1-15-500-254/922
50 to 670	G 1/2	710	-170 to +700	x	-	902006/55-228-1003-1-15-710-254/922
50 to 960	G 1/2	1000	-170 to +700	x	-	902006/55-228-1003-1-15-1000-254/922
50 to 460	G 1/2	500	-170 to +700	-	x	902006/55-228-2003-1-15-500-254/922
50 to 670	G 1/2	710	-170 to +700	-	x	902006/55-228-2003-1-15-710-254/922
50 to 960	G 1/2	1000	-170 to +700	-	x	902006/55-228-2003-1-15-1000-254/922

Important information: Please observe the internal lead wire resistance with respect to the operating temperature; see the final page for the resistance values.

Operating medium: air

Pos. 6

JUMO GmbH & Co. KG
 Delivery address: Mackenrodtstraße 14
 36039 Fulda, Germany
 Postal address: 36035 Fulda, Germany
 Phone: +49 661 6003-0
 Fax: +49 661 6003-607
 E-mail: mail@jumo.net
 Internet: www.jumo.net

JUMO Instrument Co. Ltd.
 JUMO House
 Temple Bank, Riverway
 Harlow, Essex CM20 2DY, UK
 Phone: +44 1279 635533
 Fax: +44 1279 635262
 E-mail: sales@jumo.co.uk
 Internet: www.jumo.co.uk

JUMO Process Control, Inc.
 6733 Myers Road
 East Syracuse, NY 13057, USA
 Phone: 315-437-5866
 1-800-554-5866
 Fax: 315-437-5860
 E-mail: info.us@jumo.net
 Internet: www.jumousa.com



Allocation list of temperature probes to the respective JUMO devices

For connection to...

JUMO safetyM STB/STW type 701150

The temperature probes are suitable for use according to DIN EN 14597.

Based on the test report from TÜV-Nord no. SAS-110-2006TB-2.

Temperature probes for air

Type as of March 01, 2013 Order code	Type up to February 28, 2013	Measuring probe	Temperature range in °C	Weld-in sleeve
902006/65-228-1003-1-15-500-668/000	-	1× Pt100	-170 to +700	-
902006/65-228-1003-1-15-710-668/000	-	1× Pt100	-170 to +700	-
902006/65-228-1003-1-15-1000-668/000	-	1× Pt100	-170 to +700	-
902006/65-228-2003-1-15-500-668/000	90.271-F01	2× Pt100	-170 to +700	-
902006/65-228-2003-1-15-710-668/000	90.272-F01	2× Pt100	-170 to +700	-
902006/65-228-2003-1-15-1000-668/000	90.273-F01	2× Pt100	-170 to +700	-
902006/55-228-1003-1-15-500-254/000	-	1× Pt100	-170 to +700	-
902006/55-228-1003-1-15-710-254/000	-	1× Pt100	-170 to +700	-
902006/55-228-1003-1-15-1000-254/000	-	1× Pt100	-170 to +700	-
902006/55-228-2003-1-15-500-254/000	-	2× Pt100	-170 to +700	-
902006/55-228-2003-1-15-710-254/000	-	2× Pt100	-170 to +700	-
902006/55-228-2003-1-15-1000-254/000	-	2× Pt100	-170 to +700	-

Temperature probes for water and oil

Type as of March 01, 2013 Order code	Type up to February 28, 2013	Measuring probe	Temperature range in °C	Weld-in sleeve
902006/54-227-1003-1-15-710-254/000	90.272-F03	1× Pt100	-170 to +550	-
902006/54-227-2003-1-15-710-254/000	90.272-F02	2× Pt100	-170 to +550	-
902006/10-226-1003-1-9-250-104/000	90.239	1× Pt100	-170 to +480	-
902006/10-226-2003-1-9-250-104/000	90D239	2× Pt100	-170 to +480	-
902006/10-402-1003-1-9-100-104/000	902006/10-402-1003	1× Pt100	-40 to +400	-
902006/10-402-1003-1-9-150-104/000	-	1× Pt100	-40 to +400	-
902006/10-402-1003-1-9-200-104/000	-	1× Pt100	-40 to +400	-
902006/10-402-2003-1-9-100-104/000	902006/10-402-2003	2× Pt100	-40 to +400	-
902006/10-402-2003-1-9-150-104/000	-	2× Pt100	-40 to +400	-
902006/10-402-2003-1-9-200-104/000	-	2× Pt100	-40 to +400	-
902006/53-507-1003-1-12-100-815/000	90.239-F01	1× Pt100	-40 to +480	x
902006/53-507-1003-1-12-160-815/000	90.239-F11	1× Pt100	-40 to +480	x
902006/53-505-1003-1-12-190-815/000	90.239-F03	1× Pt100	-40 to +400	x
902006/53-507-1003-1-12-220-815/000	90.239-F21	1× Pt100	-40 to +480	x
902006/53-507-2003-1-12-100-815/000	90.239-F02	2× Pt100	-40 to +480	x
902006/53-507-2003-1-12-160-815/000	90.239-F12	2× Pt100	-40 to +480	x
902006/53-505-2003-1-12-190-815/000	90D239-F03	2× Pt100	-40 to +400	x
902006/53-507-2003-1-12-220-815/000	902006/53-507-2003	2× Pt100	-40 to +480	x
902006/53-505-3003-1-12-100-815/000	90.239-F07	3× Pt100	-40 to +400	x
902006/53-505-3003-1-12-160-815/000	90.239-F17	3× Pt100	-40 to +400	x
902006/53-505-3003-1-12-220-815/000	90.239-F27	3× Pt100	-40 to +400	x
902006/40-226-1003-1-12-100-815/000	90.280-F32	1× Pt100	-170 to +480	x
902006/40-226-1003-1-12-160-815/000	90.280-F31	1× Pt100	-170 to +480	x
902006/40-226-1003-1-12-220-815/000	90.280-F30	1× Pt100	-170 to +480	x

JUMO GmbH & Co. KG
 Delivery address: Mackenrodtstraße 14
 36039 Fulda, Germany
 Postal address: 36035 Fulda, Germany
 Phone: +49 661 6003-0
 Fax: +49 661 6003-607
 E-mail: mail@jumo.net
 Internet: www.jumo.net

JUMO Instrument Co. Ltd.
 JUMO House
 Temple Bank, Riverway
 Harlow, Essex CM20 2DY, UK
 Phone: +44 1279 635533
 Fax: +44 1279 635262
 E-mail: sales@jumo.co.uk
 Internet: www.jumo.co.uk

JUMO Process Control, Inc.
 6733 Myers Road
 East Syracuse, NY 13057, USA
 Phone: 315-437-5866
 1-800-554-5866
 Fax: 315-437-5860
 E-mail: info.us@jumo.net
 Internet: www.jumousa.com



For connection to...

JUMO safetyM TB/TW type 701160
JUMO safetyM TB/TW 08 type 701170
JUMO DICON 500 type 703570
JUMO DICON 501 type 703580

The temperature probes are suitable for use according to DIN EN 14597.
 Based on the test report from TÜV-Süd no. C-T 1487-00/12.

Temperature probes for air

Type as of March 01, 2013 Order code	Type up to February 28, 2013	Measuring probe	Temperature range in °C	Weld-in sleeve
902006/65-228-1003-1-15-500-668/000	-	1× Pt100	-170 to +700	-
902006/65-228-1003-1-15-710-668/000	-	1× Pt100	-170 to +700	-
902006/65-228-1003-1-15-1000-668/000	-	1× Pt100	-170 to +700	-
902006/65-228-2003-1-15-500-668/000	90.271-F01	2× Pt100	-170 to +700	-
902006/65-228-2003-1-15-710-668/000	90.272-F01	2× Pt100	-170 to +700	-
902006/65-228-2003-1-15-1000-668/000	90.273-F01	2× Pt100	-170 to +700	-
902006/55-228-1003-1-15-500-254/000	-	1× Pt100	-170 to +700	-
902006/55-228-1003-1-15-710-254/000	-	1× Pt100	-170 to +700	-
902006/55-228-1003-1-15-1000-254/000	-	1× Pt100	-170 to +700	-
902006/55-228-2003-1-15-500-254/000	-	2× Pt100	-170 to +700	-
902006/55-228-2003-1-15-710-254/000	-	2× Pt100	-170 to +700	-
902006/55-228-2003-1-15-1000-254/000	-	2× Pt100	-170 to +700	-

Temperature probes for water and oil

Type as of March 01, 2013 Order code	Type up to February 28, 2013	Measuring probe	Temperature range in °C	Weld-in sleeve
902006/54-227-1003-1-15-710-254/000	90.272-F03	1× Pt100	-170 to +550	-
902006/54-227-2003-1-15-710-254/000	90.272-F02	2× Pt100	-170 to +700	-
902006/10-226-1003-1-9-250-104/000	90.239	1× Pt100	-170 to +480	-
902006/10-226-2003-1-9-250-104/000	90D239	2× Pt100	-170 to +480	-
902006/10-402-1003-1-9-100-104/000	902006/10-402-1003	1× Pt100	-40 to +400	-
902006/10-402-1003-1-9-150-104/000	-	1× Pt100	-40 to +400	-
902006/10-402-1003-1-9-200-104/000	-	1× Pt100	-40 to +400	-
902006/10-402-2003-1-9-100-104/000	902006/10-402-2003	2× Pt100	-40 to +400	-
902006/10-402-2003-1-9-150-104/000	-	2× Pt100	-40 to +400	-
902006/10-402-2003-1-9-200-104/000	-	2× Pt100	-40 to +400	-
902006/53-507-1003-1-12-100-815/000	90.239-F01	1× Pt100	-40 to +480	x
902006/53-507-1003-1-12-160-815/000	90.239-F11	1× Pt100	-40 to +480	x
902006/53-505-1003-1-12-190-815/000	90.239-F03	1× Pt100	-40 to +400	x
902006/53-507-1003-1-12-220-815/000	90.239-F21	1× Pt100	-40 to +480	x
902006/53-507-2003-1-12-100-815/000	90.239-F02	2× Pt100	-40 to +480	x
902006/53-507-2003-1-12-160-815/000	90.239-F12	2× Pt100	-40 to +480	x
902006/53-505-2003-1-12-190-815/000	90D239-F03	2× Pt100	-40 to +400	x
902006/53-507-2003-1-12-220-815/000	902006/53-507-2003	2× Pt100	-40 to +480	x
902006/53-505-2003-1-12-100-815/000	90.239-F07	3× Pt100	-40 to +400	x
902006/53-505-3003-1-12-160-815/000	90.239-F17	3× Pt100	-40 to +400	x
902006/53-505-3003-1-12-220-815/000	90.239-F27	3× Pt100	-40 to +400	x
902006/40-226-1003-1-12-100-815/000	90.280-F32	1× Pt100	-170 to +480	x
902006/40-226-1003-1-12-160-815/000	90.280-F31	1× Pt100	-170 to +480	x
902006/40-226-1003-1-12-220-815/000	90.280-F30	1× Pt100	-170 to +480	x

JUMO GmbH & Co. KG
 Delivery address: Mackenrodtstraße 14
 36039 Fulda, Germany
 Postal address: 36035 Fulda, Germany
 Phone: +49 661 6003-0
 Fax: +49 661 6003-607
 E-mail: mail@jumo.net
 Internet: www.jumo.net

JUMO Instrument Co. Ltd.
 JUMO House
 Temple Bank, Riverway
 Harlow, Essex CM20 2DY, UK
 Phone: +44 1279 635533
 Fax: +44 1279 635262
 E-mail: sales@jumo.co.uk
 Internet: www.jumo.co.uk

JUMO Process Control, Inc.
 6733 Myers Road
 East Syracuse, NY 13057, USA
 Phone: 315-437-5866
 1-800-554-5866
 Fax: 315-437-5860
 E-mail: info.us@jumo.net
 Internet: www.jumousa.com



For connection to...

JUMO safetyM STB/STW Ex type 701155

The temperature probes are suitable for use in potentially explosive areas according to DIN EN 14597.

Based on the test report from TÜV-Nord no. 12 203 556139.

Temperature probes for air

Type as of March 01, 2013 Order code	Type up to February 28, 2013	Measuring probe	Temperature range in °C	Weld-in sleeve
902006/65-228-1003-1-15-500-668/922	-	1× Pt100	-170 to +700	-
902006/65-228-1003-1-15-710-668/922	-	1× Pt100	-170 to +700	-
902006/65-228-1003-1-15-1000-668/922	-	1× Pt100	-170 to +700	-
902006/65-228-2003-1-15-500-668/922	90.271-F01	2× Pt100	-170 to +700	-
902006/65-228-2003-1-15-710-668/922	90.272-F01	2× Pt100	-170 to +700	-
902006/65-228-2003-1-15-1000-668/922	90.273-F01	2× Pt100	-170 to +700	-
902006/55-228-1003-1-15-500-254/922	-	1× Pt100	-170 to +700	-
902006/55-228-1003-1-15-710-254/922	-	1× Pt100	-170 to +700	-
902006/55-228-1003-1-15-1000-254/922	-	1× Pt100	-170 to +700	-
902006/55-228-2003-1-15-500-254/922	-	2× Pt100	-170 to +700	-
902006/55-228-2003-1-15-710-254/922	-	2× Pt100	-170 to +700	-
902006/55-228-2003-1-15-1000-254/922	-	1× Pt100	-170 to +700	-

Temperature probes for water and oil

Type as of March 01, 2013 Order code	Type up to February 28, 2013	Measuring probe	Temperature range in °C	Weld-in sleeve
902006/54-227-1003-1-15-710-254/922	90.272-F03	1× Pt100	-170 to +550	-
902006/54-227-2003-1-15-710-254/922	90.272-F02	2× Pt100	-170 to +700	-
902006/10-226-1003-1-9-250-104/922	90.239	1× Pt100	-170 to +480	-
902006/10-226-2003-1-9-250-104/922	90D239	2× Pt100	-170 to +480	-
902006/10-402-1003-1-9-100-104/922	902006/10-402-1003	1× Pt100	-40 to +400	-
902006/10-402-1003-1-9-150-104/922	-	1× Pt100	-40 to +400	-
902006/10-402-1003-1-9-200-104/922	-	1× Pt100	-40 to +400	-
902006/10-402-2003-1-9-100-104/922	902006/10-402-2003	2× Pt100	-40 to +400	-
902006/10-402-2003-1-9-150-104/922	-	2× Pt100	-40 to +400	-
902006/10-402-2003-1-9-200-104/922	-	2× Pt100	-40 to +400	-
902006/53-507-1003-1-12-100-815/922	90.239-F01	1× Pt100	-40 to +480	x
902006/53-507-1003-1-12-160-815/922	90.239-F11	1× Pt100	-40 to +480	x
902006/53-505-1003-1-12-190-815/922	90.239-F03	1× Pt100	-40 to +400	x
902006/53-507-1003-1-12-220-815/922	90.239-F21	1× Pt100	-40 to +480	x
902006/53-507-2003-1-12-100-815/922	90.239-F02	2× Pt100	-40 to +480	x
902006/53-507-2003-1-12-160-815/922	90.239-F12	2× Pt100	-40 to +480	x
902006/53-505-2003-1-12-190-815/922	90D239-F03	2× Pt100	-40 to +400	x
902006/53-507-2003-1-12-220-815/922	902006/53-507-2003	2× Pt100	-40 to +480	x
902006/53-505-3003-1-12-100-815/922	90.239-F07	3× Pt100	-40 to +400	x
902006/53-505-3003-1-12-160-815/922	90.239-F17	3× Pt100	-40 to +400	x
902006/53-505-3003-1-12-220-815/922	90.239-F27	3× Pt100	-40 to +400	x
902006/40-226-1003-1-12-100-815/922	90.280-F32	1× Pt100	-170 to +480	x
902006/40-226-1003-1-12-160-815/922	90.280-F31	1× Pt100	-170 to +480	x
902006/40-226-1003-1-12-220-815/922	90.280-F30	1× Pt100	-170 to +480	x

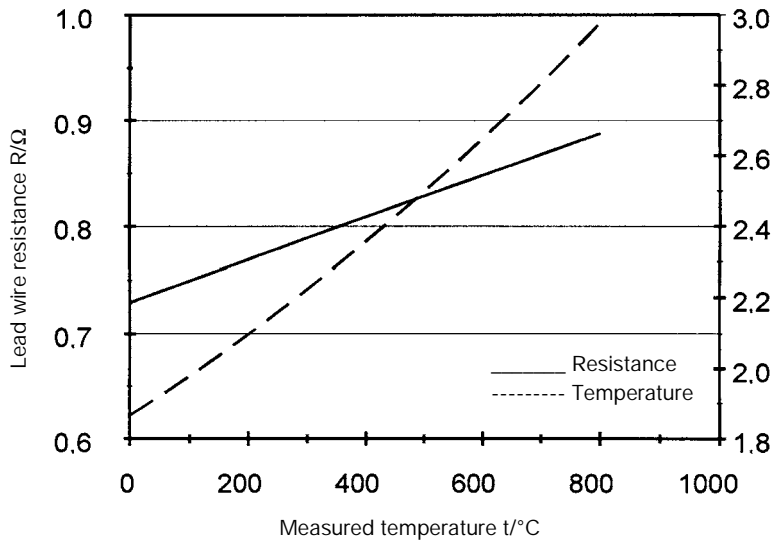
JUMO GmbH & Co. KG
 Delivery address: Mackenrodtstraße 14
 36039 Fulda, Germany
 Postal address: 36035 Fulda, Germany
 Phone: +49 661 6003-0
 Fax: +49 661 6003-607
 E-mail: mail@jumo.net
 Internet: www.jumo.net

JUMO Instrument Co. Ltd.
 JUMO House
 Temple Bank, Riverway
 Harlow, Essex CM20 2DY, UK
 Phone: +44 1279 635533
 Fax: +44 1279 635262
 E-mail: sales@jumo.co.uk
 Internet: www.jumo.co.uk

JUMO Process Control, Inc.
 6733 Myers Road
 East Syracuse, NY 13057, USA
 Phone: 315-437-5866
 1-800-554-5866
 Fax: 315-437-5860
 E-mail: info.us@jumo.net
 Internet: www.jumousa.com



Temperature errors



The internal lead wire causes a systematic measurement error in the versions 902006/54 and 902006/65. This depends on both the nominal length (NL) as well as the measured temperature. In the table, the error is shown per 100 mm insertion length (EL) depending on the temperature measurement.

t/°C	R/Ω	Δt/K
0	0.73	1.87
100	0.75	1.98
200	0.77	2.09
300	0.79	2.22
400	0.81	2.35
500	0.83	2.49
600	0.85	2.64
700	0.87	2.80
800	0.89	2.98

Lead wire resistance of a 0.5 mm NiCr wire per 100 mm insertion length (EL) (double wire length).
 The specifications are to be viewed as reference values.