

# rotronic

**Datenblatt - Fiche technique - Data sheet**

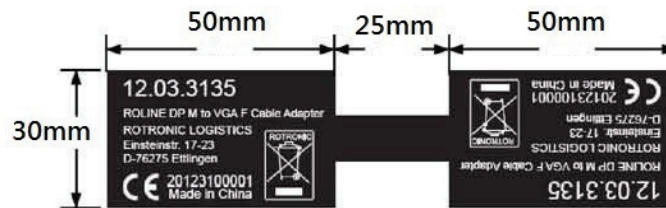
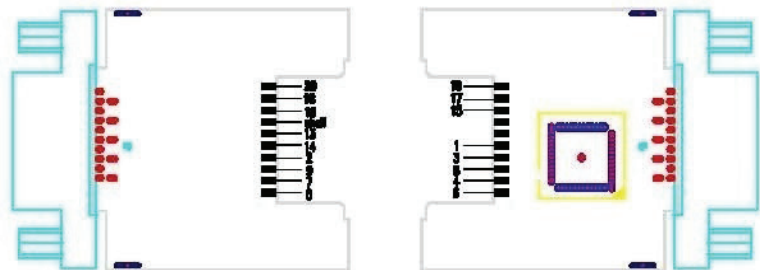
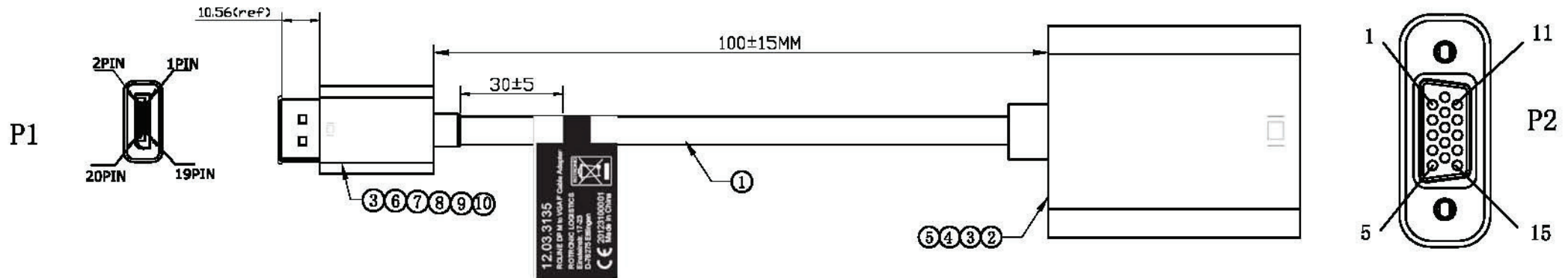
**12.03.3135**



**ROLINE DisplayPort-VGA Adapter, DP ST – VGA BU,**

**ROLINE Adaptateur DisplayPort-VGA, DP M – VGA F,**

**ROLINE DisplayPort-VGA Adapter, DP M – VGA F,**



**PIN Assignment**

P1	PCB
1	RED
2	WHITE
3	DRAIN
4	DRAIN
5	BROWN
6	WHITE
15	BLACK
17	WHITE
18	DRAIN
18	PINK
18	WHITE
4	PURPLE
13	PURPLE
19	RED
20	GREY
SHELL	DRAIN
SHELL	SHELL

NO	DESCRIPTION	Q'TY	UNIT
10	PE	1	pcs
9	DisplayPort M ABS FRONT SHELL WHITE	1	pcs
8	DisplayPort M ABS SHELL WHITE MARKING: □ (PT:COOL GREY 8C)	1	pcs
7	DisplayPort M SHELL NICKEL PLATED PIN GOLD PLATED WITHOUT HOOT	1	pcs
6	DisplayPort M DUST CAP	1	pcs
5	VGA (DP to VGA) ABS SHELL WHITE MARKING: □ (PT:COOL GREY 8C)	1	pcs
4	VGA F(DP to VGA) ABS FRONT SHELL	1	pcs
3	65P WHITE PVC	8	g
2	DP M to VGA (NICKEL) F PCB+SMT+SOLDER	1	pcs
1	Display Port DL20276 [34AWG(7/0.06TC)*1PR+EAM]*5+32AWG(7/0.08TC)*5C +D(BC)+AB 85% (16/7/0.12AL) OD:4.5MM WHITE	L	M

		TOLERANCE				
		INCHES	M/M			
		.X	.015			.30
		.XX	.010	.10		
		.XXX	.005	.05		
DRAWN BY		joe		ROLINE to M - VGA F Adatper Cable, White		
CHECK BY				CUSTOMER :		
APPD BY				CUSTOMER P/N : 12.03.3135		
		SCALE	NONE		DRAWING NO. :	
		UNIT	MM			
		DATE	2013. 01. 11		REV. A	
						1/3