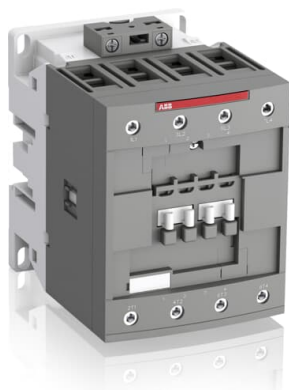


PRODUCT-DETAILS

AF80-40-00-13

AF80-40-00-13 100-250V50/60HZ-DC

Contactors



General Information

Extended Product Type	AF80-40-00-13
Product ID	1SBL397201R1300
EAN	3471523133730
Catalog Description	AF80-40-00-13 100-250V50/60HZ-DC Contactor

Long Description	<p>AF80 4-pole contactors are used for controlling power circuits up to 690 V AC and 440 V DC. They are mainly used for controlling non-inductive or slightly inductive loads (i.e. resistance furnaces...). AF... contactors include an electronic coil interface accepting a wide control voltage $U_c \text{ min.} \dots U_c \text{ max.}$ Only four coils cover control voltages between 24...500 V 50/60 Hz or 20...500 V DC. AF contactors can manage large control voltage variations. One coil can be used for different control voltages used worldwide without any coil change. AF contactors have built-in surge protection and do not require additional surge suppressors. The AF... series 4-pole contactors are of the block type design. - Main poles and auxiliary contact blocks: 4 N.O. main poles, front and side-mounted add-on auxiliary contact blocks (mechanically-linked auxiliary contacts compliant with Annex L of IEC 60947-5-1. N.C. mirror contacts compliant with Annex F of IEC 60947-4-1) - Control circuit: AC or DC operated - Accessories: a wide range of accessories is available.</p>
------------------	---

Classifications

Object Classification Code	Q
ETIM 4	EC000066 - Magnet contactor, AC-switching
ETIM 5	EC000066 - Magnet contactor, AC-switching
ETIM 6	EC000066 - Power contactor, AC switching
ETIM 7	EC000066 - Power contactor, AC switching
UNSPSC	39121529

E-Number (Sweden)

3210315

Container Information

Package Level 1 Units	box 1 piece
Package Level 1 Width	150 mm
Package Level 1 Depth / Length	150 mm
Package Level 1 Height	103 mm
Package Level 1 Gross Weight	1.57 kg
Package Level 1 EAN	3471523133730
Package Level 2 Units	box 8 piece
Package Level 2 Width	250 mm
Package Level 2 Depth / Length	300 mm
Package Level 2 Height	300 mm
Package Level 2 Gross Weight	12.56 kg
Package Level 3 Units	192 piece

Certificates and Declarations (Document Number)

ABS Certificate	ABS_15-GE1349500-PDA_90682247
CB Certificate	CB_SE-77417M1
CCC Certificate	CCC_2013010304646569
Declaration of Conformity - CE	1SBD250001U1000
DNV Certificate	DNV-GL_TAE00001AF-3
DNV GL Certificate	DNV-GL_TAE00001AF-3
EAC Certificate	EAC_RU C-FR ME77 B03597
GL Certificate	DNV-GL_TAE00001AF-3
Instructions and Manuals	1SBC101047M6801
KC Certificate	KC_HW02016-15013A
LR Certificate	LRS_1300087E1
RMRS Certificate	RMRS_1400682124
RoHS Information	1SBD250001U1000
UL Certificate	UL_20141124-E312527-14-2
UL Listing Card	UL_E312527

Technical UL/CSA

General Use Rating UL/CSA	(600 V AC) 105 A
Horsepower Rating UL/CSA	(220 ... 240 V AC) Three Phase 30 hp (440 ... 480 V AC) Three Phase 60 hp (550 ... 600 V AC) Three Phase 75 hp (120 V AC) Single Phase 7-1/2 hp (200 ... 208 V AC) Three Phase 25 hp (240 V AC) Single Phase 15 hp

Environmental

Ambient Air Temperature	Close to Contactor for Storage -60 ... +80 °C Near Contactor for Operation in Free Air -40 ... +70 °C
Climatic Withstand	Category B according to IEC 60947-1 Annex Q
Maximum Operating	3000 m

Altitude Permissible	
Resistance to Vibrations acc. to IEC 60068-2-6	5 ... 300 Hz 3 g Closed position / 2 g Open position
RoHS Status	Following EU Directive 2011/65/EU

Technical

Number of Main Contacts NO	4
Number of Main Contacts NC	0
Number of Auxiliary Contacts NO	0
Number of Auxiliary Contacts NC	0
Rated Operational Voltage	Main Circuit 690 V
Rated Frequency (f)	Main Circuit 50 / 60 Hz
Conventional Free-air Thermal Current (I _{th})	acc. to IEC 60947-4-1, Open Contactors q = 40 °C 125 A
Rated Operational Current AC-1 (I _e)	(690 V) 40 °C 125 A (690 V) 60 °C 105 A (690 V) 70 °C 90 A
Rated Operational Current AC-3 (I _e)	(220 / 230 / 240 V) 60 °C 80 A (380 / 400 V) 60 °C 80 A (415 V) 60 °C 80 A (440 V) 60 °C 80 A (500 V) 60 °C 65 A (690 V) 60 °C 49 A
Rated Operational Power AC-3 (P _e)	(220 / 230 / 240 V) 22 KWT (380 / 400 V) 37 KWT (415 V) 45 KWT (440 V) 45 KWT (500 V) 45 KWT (690 V) 45 KWT
Rated Short-time Withstand Current (I _{cw})	at 40 °C Ambient Temp, in Free Air, from a Cold State 10 s 780 A at 40 °C Ambient Temp, in Free Air, from a Cold State 15 min 140 A at 40 °C Ambient Temp, in Free Air, from a Cold State 1 min 300 A at 40 °C Ambient Temp, in Free Air, from a Cold State 1 s 1200 A at 40 °C Ambient Temp, in Free Air, from a Cold State 30 s 450 A for 1 s -empty- A
Maximum Electrical Switching Frequency	AC-1 600 cycles per hour
Rated Insulation Voltage (U _i)	acc. to UL/CSA 600 V acc. to IEC 60947-4-1 and VDE 0110 (Gr. C) 1000 V
Rated Impulse Withstand Voltage (U _{imp})	8 kV
Maximum Mechanical Switching Frequency	3600 cycles per hour
Rated Control Circuit Voltage (U _c)	50 Hz 100 ... 250 V 60 Hz 100 ... 250 V DC Operation 100 ... 250 V
Connecting Capacity Main Circuit	Rigid 1x 6 ... 70 m ² Rigid 2x 6 ... 50 m ² Flexible with Ferrule 1/2x 6 ... 50 m ²
Connecting Capacity Control Circuit	Flexible with Ferrule 1/2x 0.75 ... 2.5 m ² Rigid 1/2x 1 ... 2.5 m ²
Wire Stripping Length	Main Circuit 17 mm
Degree of Protection	acc. to IEC 60529, IEC 60947-1, EN 60529 Coil Terminals IP20 acc. to IEC 60529, IEC 60947-1, EN 60529 Main Terminals IP10
Terminal Type	Screw Terminals

Dimensions

Product Net Width	90 mm
Product Net Depth / Length	116 mm
Product Net Height	125.5 mm
Product Net Weight	1.44 kg

Popular Downloads

Instructions and Manuals	1SBC101047M6801
--------------------------	-----------------

Ordering

Minimum Order Quantity	1 piece
Customs Tariff Number	85364900

Categories

Low Voltage Products and Systems → Control Products → Contactors → Block Contactors

