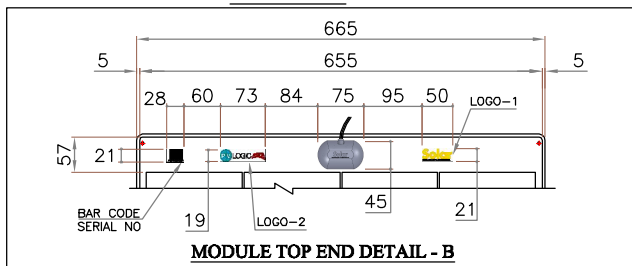
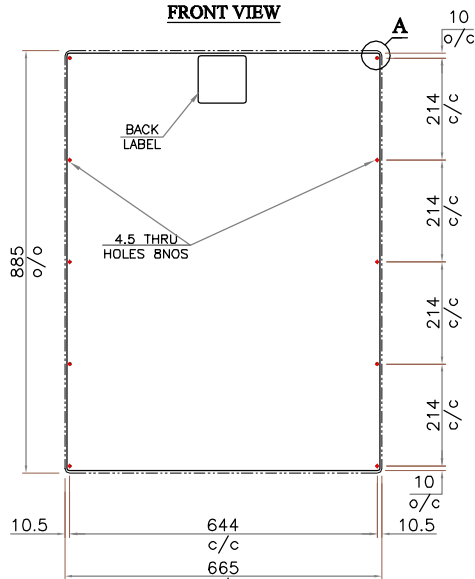
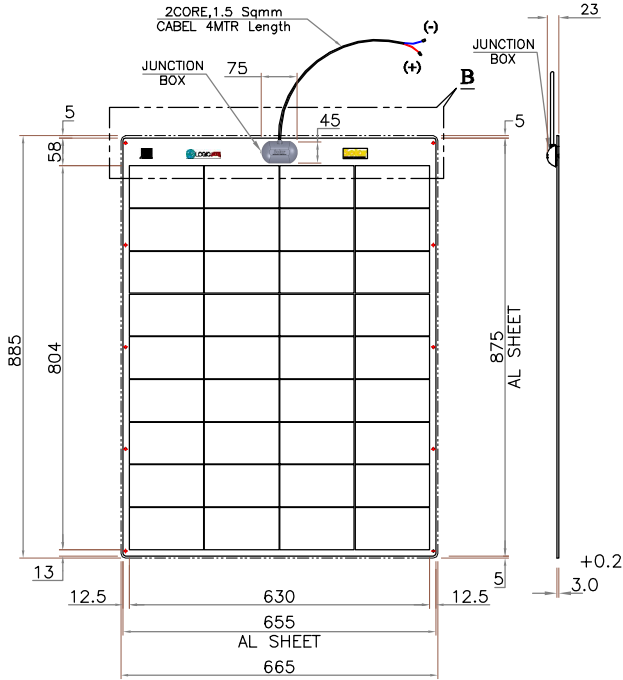


Datasheet

SOLAR LAMINATE 9046165

Part No 9046165 - 885 x 665 x 3.0mm



C/C - CENTER TO CENTER, O/O - OUTER TO OUTER, O/C - OUTER TO CENTER

NOTE :

2 Years Panel warranty.

LIMITED PEAK POWER WARRANTY

- (i) 90% of minimum peak power at STC in 2 Years.
- (ii) 85% of minimum peak power at STC in 5Years.

MODEL NAME : 9046165 / 80W - 12V Flexi

ELECTRICAL PARAMETERS

| | | | |
|---------------------------|-------|------|-----------|
| MAXIMUM POWER RATING | Pmax | [Wp] | 80 W |
| Current at max power | I max | [A] | 4.45 |
| Voltage at max power | V max | [V] | 18.0 |
| Short circuit current | Isc | [A] | 4.82 |
| Open circuit voltage | Voc | [V] | 21.6 |
| Tolerance on power output | | | +/- 3.0 % |
| Module Efficiency | | | 13.60 % |
| Maximum system voltage | | | 750V |

CELL SPECIFICATION

| | |
|-------------------------------------|----------------------------|
| CELL SPECIFICATION | MULTI Crystalline Si cells |
| Cell Efficiency | 16.02 % |
| Number of cells | 36 |
| JUNCTION BOX [75mm x 45mm x 19mm] | STI FLEXI |
| Number of Diodes - BYPASS DIODES | 2 |
| MODULE WEIGHT | 3.75 Kg ~ |

THERMAL PARAMETERS

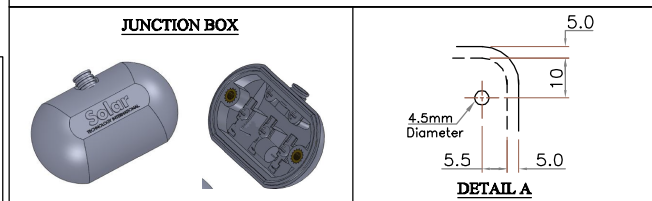
| | | |
|--------------------------------------------------|--------|----------------------|
| NOCT | [°C] | 45 ± 2 |
| Temp . Coefficient - Short circuit Current [A] | | 1.2mA / °C |
| Temp . Coefficient - Open circuit Voltage [V] | | -2.22 mV / °C / Cell |

1. Wp (Watt peak) = Peak Power Air Mass AM = 1.5 Irradiance E = 1000W/m² Cell Temperature Tc = 25°C

2. Normal operating Cell Temperature at : Irradiance E = 800W/m² Cell temperature Tu 20°C Wind speed Vw = 1 m/s

3. Temperature Range = - 40° C to + 80°C

4. Diagonal lifting of module plane Per IEC 61215 Test requirements



SOLAR MODULE LAYUP VIEW

