



ENGLISH

Datasheet

Stock No. 1864621

# RS PRO USB Rechargeable Cree LED Headlight

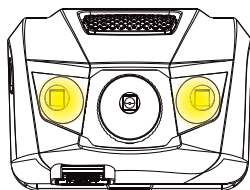
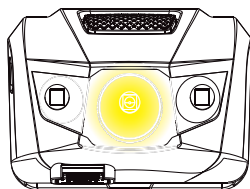
 **250**  
LUMENS

LIGHT BY  
**CREE**  
LEDs

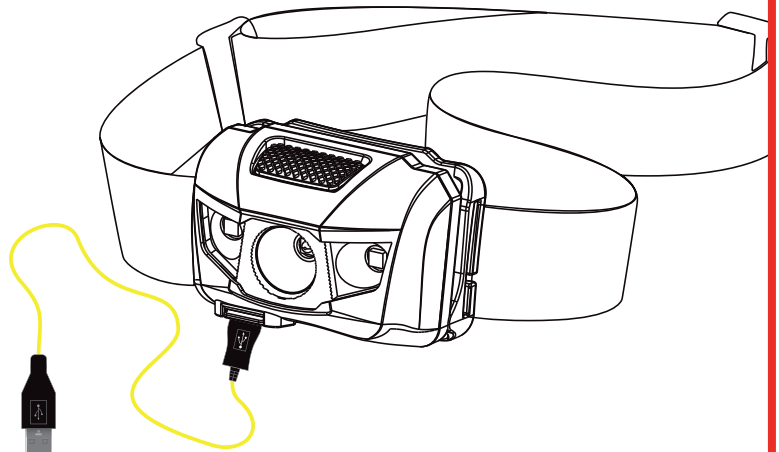
 **2** Light Sources

 **45°** Rotating Head Angle

 USB Charging Cable Inc.



**Spot Beam & Floodlight Modes**



**Convenient USB Recharging**

## Technical Data

250 Lumen white Cree LED  
 Additional 2 x side SMD LEDs for Floodlight  
 SOS and Strobe functions  
 45° Rotating head  
 Adjustable headband  
 LED colour temperature 6500k  
 Super lightweight at only 95g  
 IPX6 water resistant

	MODE			
	HIGH		250 lm	66 m
	MID		75 lm	38 m
	LOW		12 lm	14 m
	SOS		--	--
	HIGH		52 lm	10 m
	LOW		16 lm	5 m
	STROBE		--	--

**Product Size:** Headlight: 47 x 62 x 37mm

**Product Weight:** 95g

**Battery:** Rechargeable built-in 3.7v 1800mAh Li-polymer

**Charger:** Micro-USB cable (Included)

**Charging time:** approx 3 hours (turn product off when charging)

**LED charging indicator:** red flashing = charging / green light = charged,

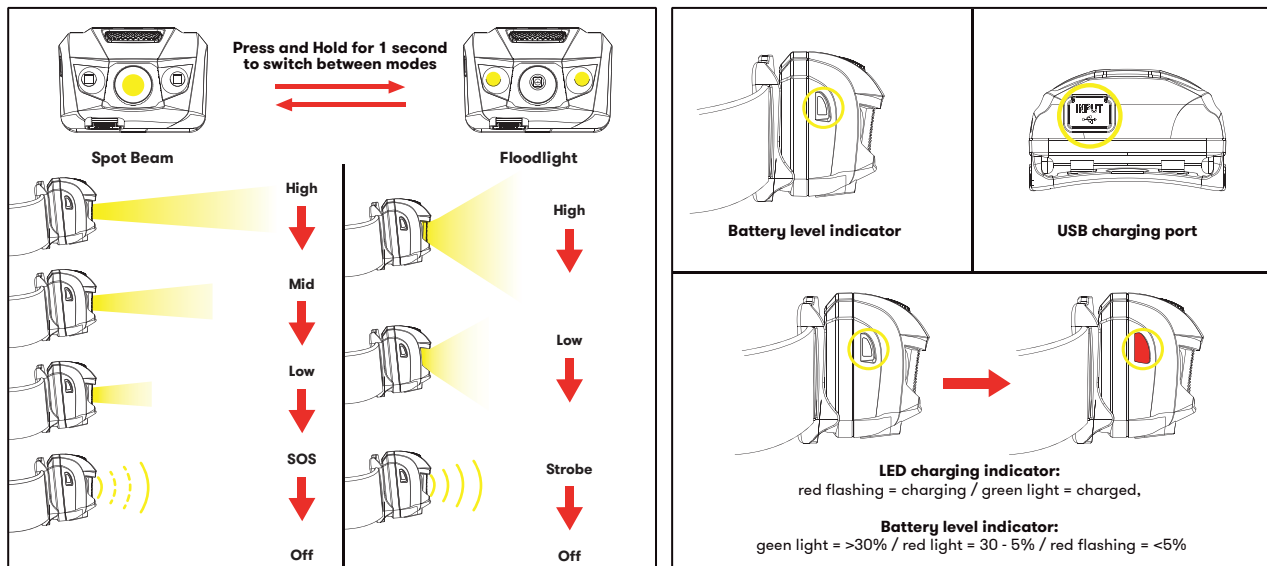
**Battery level indicator:** green light = >30% / red light = 30 - 5% / red flashing = <5%

## Operation

Spot Beam and Flood light - when ON in either mode, press and hold to switch to the other mode.

Brightness - when in either mode press to cycle through dim and flash settings.

Off - if left in any mode for more than 3 seconds, the next press will turn off. Or cycling through the settings will also turn off.



## ADVICE & IMPORTANT INFORMATION!

- Do not look directly at the LED.
- Do not operate in direct sunlight or extreme temperature conditions (below -10°C or above 50°C).
- The LED will become hot when switched on; do not touch and do not place face down on any surface – risk of fire!
- Do not use the device if there is any visible damage to the housing or cable.
- Do not use the product in the immediate vicinity of flammable materials or gases.
- Children under 12 years of age should only use the product under adult supervision.
- Before cleaning the product, disconnect the charge cable. Clean with a dry or slightly moist, clean, lint-free cloth and a mild detergent if required. Do not use cleaners that contain abrasives or solvents.
- Do not open, disassemble or attempt to modify the product; this will void any warranty and can be dangerous.
- Improper use or modification is not covered under warranty.
- Ensure the lens does not come into contact with hard/sharp objects; damage to the lens may affect light output.
- To maintain rechargeable batteries, distributors should recharge the battery every 6 months and users should recharge every 3 months if not using for an extended period.
- Fully charge the product before storage.
- The rechargeable battery will reach optimum performance only after several complete charging and discharging cycles.
- Protect the battery from heat, intense sunlight, fire, water and moisture – danger of explosion!
- If the battery is damaged, fluids can leak out. AVOID contact as this can lead to skin irritation and/or burns. If skin contact happens, rinse thoroughly with water. If irritation persists, seek medical advice. Also seek immediate medical assistance if battery fluid comes into contact with the eyes.
- Do not dispose of this device in normal household waste. It must be disposed of via an authorised disposal centre or at your local waste disposal unit.
- Please recycle packaging where possible.
- Keep these instructions for future reference or for subsequent possessors.