



CT Meter

For AC Current Measurement When Using Current Transformers

Easy to Use. Easy to Read.

High resolution 5A Input
for use with current transformers

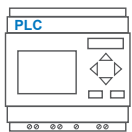
0.5%
Accuracy



Programmable 4 digit
star-burst display. Custom
messages & annunciators



Alarm set points



2 outputs - digital
and analogue

Less than
53mm deep

**WIDE
viewing angle**

40
Segment curved
bar graph display

Programmable backlight
color to alert user



Warning
flash



Programmable
scale

Combined **digital and
bar graph** display



USB port for custom user settings
via the **free easy-to-use software**

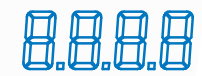
16

Position switch for
selecting standard
configurations



Available in either

**POSITIVE
NEGATIVE**



Full 4 digit readout for accuracy

Featuring an acclaimed easy-to-read display, combined with easy-to-use programming software and a high resolution input, the CT Meter is the newest addition to the Advanced Panel Meter (APM) product group to measure current.

The CT Meter is designed specifically for use with current transformers. When used with an external current transformer, it can accurately measure up to 10,000 amps. The CT Meter also provides a range of features, such as alarm set-points and three-color dynamic backlighting.

The customizable four-character message display and scalability enable users to tailor the meter to display critical parameters to their desired specifications. The set-points, coupled with the backlighting allows operators to be visually alerted when a parameter is out of range. The two outputs can be used to connect the APM to other systems in the process.

Go to www.trumeter.com/apm for further information

Key Features

Large multi-format display that incorporates:

- 40 segment bar graph display
- Large 4-digit display
- Separate Starburst display area for annunciators, custom messages and alarm information
- Dynamic backlight color

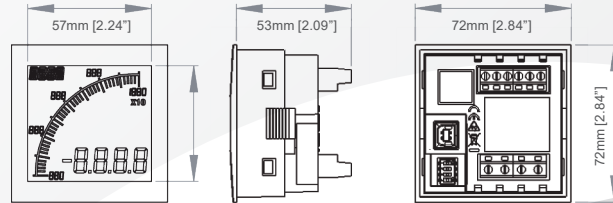
Programmable:

- Display Range (Both Min & Max Values)
- Custom annunciators
- User-selectable backlight color and intensity
- Two independent alarm set-points
- Two independent outputs
- 4-20mA analog monitor output

Visibility:

- User-adjustable backlight brightness and colour
- Large display
- Wide viewing angle (horizontal and vertical)
- Custom annunciators

Dimensions:



Panel cutout: 68mm x 68mm [2.68" x 2.68"] as per DIN43700/IEC61554

INPUT

Range (CT Output Current)
 Range (via External CT)
 Accuracy

CURRENT

0 - 5A
 0 - 10,000A
 0.5%

ENVIRONMENTAL

Temperature - operating
 Temperature - storage
 IP rating (from the front)
 NEMA rating (from the front)

-10 to +60°C
 -40 to +70°C
 IP65
 Type 4 & Type 12

POWER SUPPLY

Nominal Input

12-24VAC or DC

DISPLAY

Number of digits
 Digit height
 Number of message characters
 Backlight colours
 LCD display

4
 12mm [0.47"]
 4
 Red, Green, White
 Positive or Negative

OUTPUTS

Max voltage
 Max current
 Analogue output

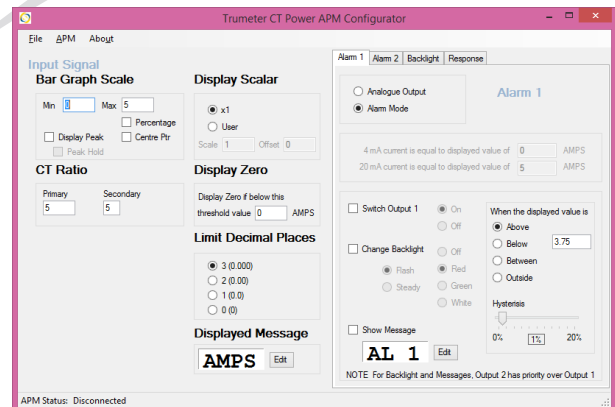
34V
 500mA
 4-20mA

CERTIFICATION

UL, cUL, CE

Easy To Use Software

Just plug into any USB port on your PC, run the freely available APM Configurator application and you're off. No drivers required.



Part Numbers:

APM-CT-APN
 APM-CT-APO
 APM-CT-ANN
 APM-CT-ANO
 022128-01

APM CT Meter, Positive LCD
 APM CT Meter, Positive LCD, With Outputs
 APM CT Meter, Negative LCD
 APM CT Meter, Negative LCD, With Outputs
 USB Cable

BY REQUEST

APM-CT-APS
 APM-CT-ANS

APM CT Meter, Positive LCD with Modbus
 APM CT Meter, Negative LCD with Modbus

Full specifications available online www.trumeter.com/apm



www.trumeter.com

Trumeter (Europe)

Trumeter
 Pilot Mill, Alfred Street
 Bury, Lancashire
 BL9 9EF
 Tel: +44 161 674 0960
 Email: sales.uk@trumeter.com

Trumeter (The Americas)

702 S. Military Trail
 Deerfield Beach, Florida
 FL 33442,
 USA
 Tel: +1 954 725 6699
 Email: sales.usa@trumeter.com

Innovative Design Technologies Sdn. Bhd

Lot 5881, Lorong Iks Bukit Minyak 1
 Taman Perindustrian Iks, 14000 Bukit Tengah
 Penang, Malaysia
 Web: www.idtworld.com
 Tel: + 604 5015700
 Email: sales.my@idtworld.com