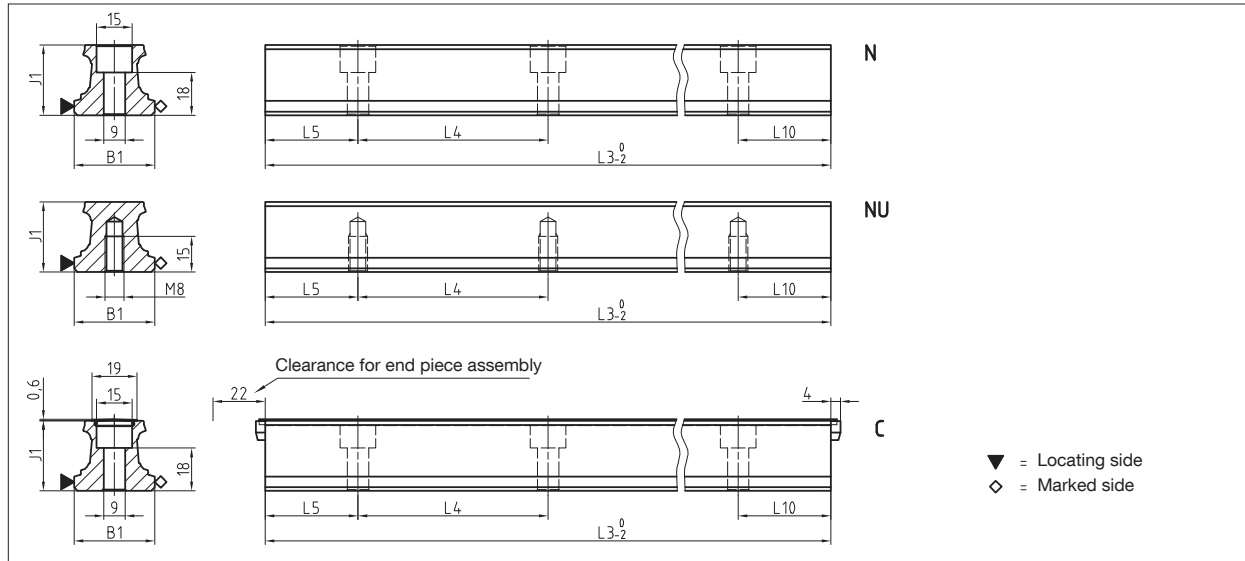


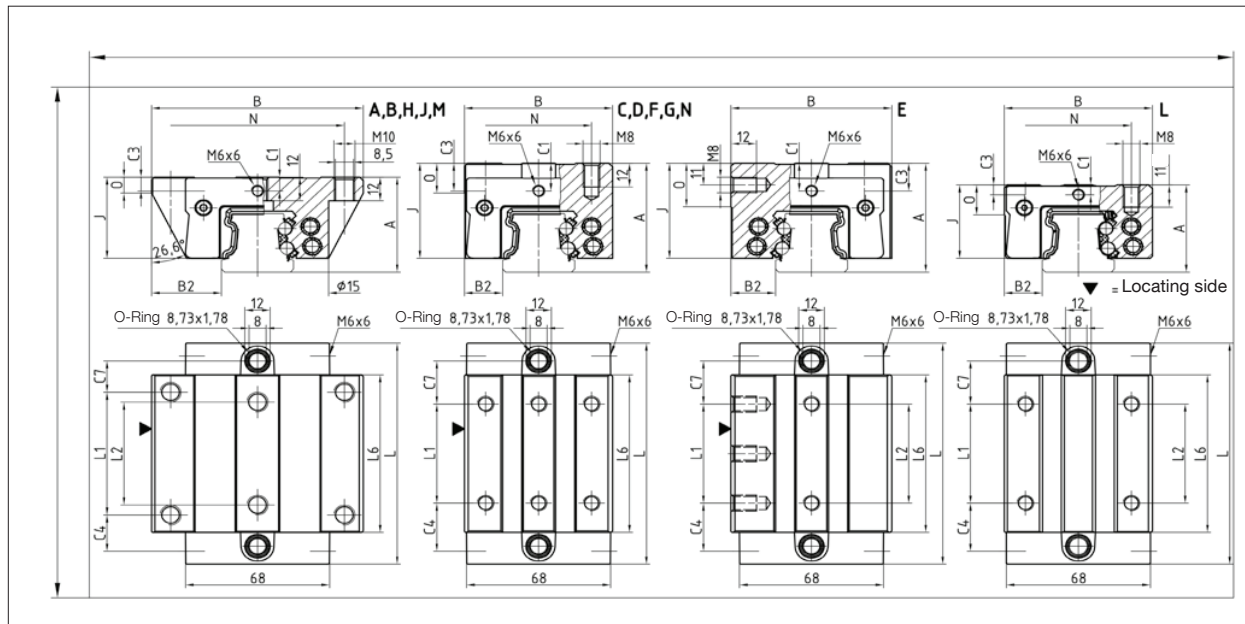
## 4.2 Technical data and options

### BM Size 35

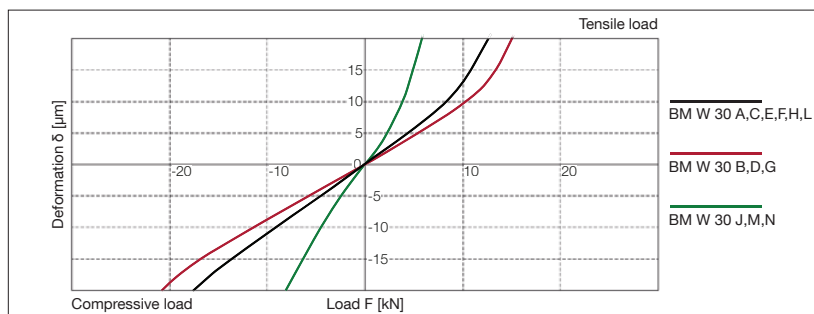
#### BM S 35 Drawings



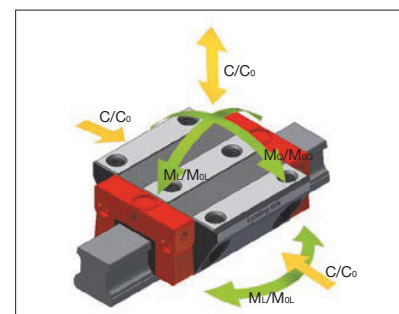
#### BM W 35 Drawings



#### BM W 35 Rigidity diagram



#### BM W 35 Load rating



## 4.2 Technical data and options

### BM Size 35

#### BM S 35 Dimensions



	BM S 35-N	BM S 35-NU	BM S 35-C			
B1: Rail width	34	34	34			
J1: Rail height	29.5	29.5	29.5			
L3: Rail length max.	6000	6000	6000			
L4: Spacing of fixing holes	80	80	80			
L5/L10: Position of first/last fixing hole	38.5	38.5	38.5			
Gew: Rail weight, specific (kg/m)	5.4	5.7	5.7			

#### Available options for BM S 35



#### BM W 35 Dimensions and capacities



	BM W 35-A	BM W 35-B	BM W 35-C	BM W 35-D	BM W 35-E	BM W 35-F	BM W 35-G	BM W 35-H	BM W 35-J	BM W 35-L	BM W 35-N	BM W 35-M
A: System height	48	48	55	55	55	48	48	44	44	44	48	48
B: Carriage width	100	100	70	70	76	70	70	100	100	70	70	100
B2: Distance between locating faces	33	33	18	18	21	18	18	33	33	18	18	33
C1: Position of center front lube	7	7	14	14	14	7	7	5.3	5.3	5.3	7	7
C3: Position of lateral lube hole	7	7	14	14	14	7	7	5.3	5.3	5.3	7	7
C4: Position of lateral lube hole	18.3	31.1	24.3	26.1	24.3	24.3	26.1	18.3	33.5	24.3	33.5	33.5
C7: Position of top lube hole	15.8	28.6	21.8	23.6	21.8	21.8	23.6	15.8	31.0	21.8	31.0	31.0
J: Carriage height	41	41	48	48	48	41	41	37	37	37	41	41
L: Carriage length	111.6	137.1	111.6	137.1	111.6	111.6	137.1	111.6	79.9	111.6	79.9	79.9
L1: Exterior fixing hole spacing	62	62	50	72	50	50	72	62	-	50	-	-
L2: Interior fixing hole spacing	52	52	-	-	50	-	-	-	-	-	-	-
L6: Steel body length	79.6	105.1	79.6	105.1	79.6	79.6	105.1	79.6	47.9	79.6	47.9	47.9
N: Lateral fixing hole spacing	82	82	50	50	-	50	50	82	82	50	50	82
O: Reference face height	8.5	8.5	15	15	22	8.5	8.5	8.5	8.5	15	15	8.5
<b>Capacities and weights</b>												
CO: Static load capacity (N)	84400	110300	84400	110300	84400	84400	110300	84400	37700	84400	37700	37700
C100: Dynamic load capacity (N)	38700	46700	38700	46700	38700	38700	46700	38700	25800	38700	25800	25800
MOQ: Static cross moment capacity (Nm)	1566	2048	1566	2048	1566	1566	2048	1566	717	1566	717	717
MOL: Static longitud. moment capacity (Nm)	1252	2104	1252	2104	1252	1252	2104	1252	240	1252	240	240
MQ: Dyn. cross moment capacity (Nm)	718	867	718	867	718	718	867	718	492	718	492	492
ML: Dyn. longitud. moment capacity (Nm)	574	891	574	891	574	574	891	574	172	574	172	172
Gew: Carriage weight (kg)	1.8	2.3	1.7	2.2	1.9	1.4	1.8	1.5	1.2	1.2	0.9	1.2

#### Available options for BM W 35

