



Shunt Meter


For DC Current Measurement

Easy to Use. Easy to Read.

0 - 1VDC Input

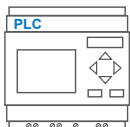
High resolution for DC Current Shunts
Low Side Applications

0.1%
Accuracy

 Programmable 4 digit star-burst display. Custom messages & annunciators

2

Alarm set points



2 outputs - digital and analogue

Less than 53mm deep

WIDE
viewing angle

40

Segment curved bar graph display

Programmable backlight color to alert user



Warning flash



Programmable scale

Combined **digital and bar graph** display



USB 2.0

USB port for custom user settings via the **free easy-to-use software**

16

Position switch for selecting standard configurations



Full 4 digit readout for accuracy

Available in either



POSITIVE
NEGATIVE

Featuring an acclaimed easy-to-read display and a high resolution input, the Shunt Meter takes the APM into a wide range of new applications, where accurate DC current measurement is required.

The APM Shunt Meter is ideal for DC current measurement applications in marine, leisure, material handling, and industrial applications such as power supplies, load banks and charging systems.

The programmable scale and custom annunciators mean users can tailor the meter to display their critical parameters exactly how they want. Dynamic backlighting, in conjunction with setpoints, means operators are visually alerted when a parameter is out of range. The two outputs can be used to connect the APM to other systems in the process, meaning the APM Shunt Meter is much more than just a display.

Go to www.trumeter.com/apm for further information

Key Features

Large multi-format display that incorporates:

- 40 segment bar graph display
- Large 4-digit display
- Separate Starburst display area for annunciators, custom messages and alarm information
- Dynamic backlight color

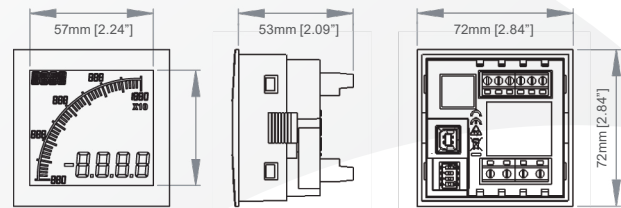
Visibility:

- User-adjustable backlight brightness and color
- Large display
- Wide viewing angle (horizontal and vertical)
- Custom annunciators

Programmable:

- Display Range (Both Min & Max Values)
- Custom annunciators
- User-selectable backlight color and intensity
- Two independent alarm set-points
- Two independent outputs
- 4-20mA analog monitor output

Dimensions:



Panel cutout: 68mm x 68mm [2.68" x 2.68"] as per DIN43700/IEC61554

INPUT

Range	0 - 1 VDC
Impedance	1 Meg
Accuracy (0-200mV)	0.1% of signal or 0.5mV, whichever is greater
Accuracy (201-1000mV)	0.2% of full scale

ENVIRONMENTAL

Temperature - operating	-10 to +60°C
Temperature - storage	-40 to +70°C
IP rating (from the front)	IP65
NEMA rating (from the front)	Type 4 & Type 12

POWER SUPPLY

Nominal Input	12-24 VDC
---------------	-----------

DISPLAY

Number of digits	4
Digit height	12mm [0.47"]
Number of message characters	4
Backlight colors	Red, Green, White
LCD display	Positive or Negative

OUTPUTS

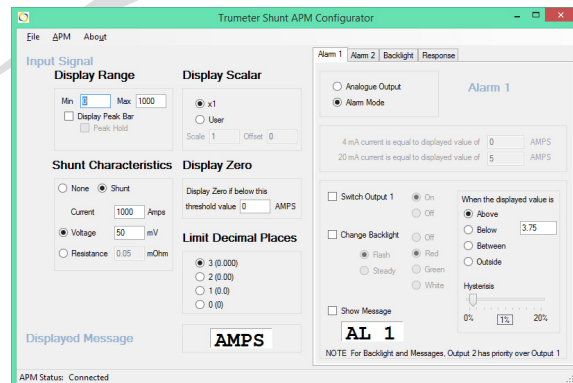
Max voltage	34V
Max current	500mA
Analog output	4-20mA

CERTIFICATION

UL, cUL, CE

Easy To Use Software

Just plug into any USB port on your PC, run the freely available APM Configurator application and you're off. No drivers required.



Open-type Measuring and Testing Equipment
E469787



Part Numbers:

APM-SHUNT-APO	APM SHUNT METER, POSITIVE LCD, WITH OUTPUTS
APM-SHUNT-ANO	APM SHUNT METER, NEGATIVE LCD, WITH OUTPUTS

022128-01	USB Cable
-----------	-----------

By Request: Modbus connectivity

APM-CT-APS	APM CT METER, POSITIVE LCD WITH MODBUS
APM-CT-ANS	APM CT METER, NEGATIVE LCD WITH MODBUS

Full specifications available online www.trumeter.com/apm



Trumeter (Europe)
 Pilot Mill
 Alfred Street
 Bury,
 BL9 9EF
 Tel: +44 161 674 0960
 Email: sales.uk@trumeter.com

Trumeter (The Americas)
 702 S. Military Trail
 Deerfield Beach, Florida
 FL 33442,
 USA
 Tel: +1 954 725 6699
 Email: sales.usa@trumeter.com

Innovative Design Technologies Sdn. Bhd
 Lot 5881, Lorong Iks Bukit Minyak 1
 Taman Perindustrian Iks, 14000 Bukit Tengah
 Penang, Malaysia
 Web: www.idtworld.com
 Tel: + 604 5015700
 Email: sales.my@idtworld.com