

- Excelon® design allows in-line or modular installation**
- High efficiency oil and particle removal**
- Quick release bayonet bowl**
- Standard visual service life indicator turns from green to red when the filter element needs to be replaced**



**Technical data**

**Fluid:**  
Compressed air, neutral gases  
NOTE: Contact technical support for use with other media.

**Maximum pressure:**  
Transparent bowl: 150 psig (10 bar)  
Metal bowl: 250 psig (17 bar)  
(72) metal bowl w/autodrain: 116 psig (8 bar)

NOTE: Coalescing filters should be used in conjunction with a 5µm general purpose filter upstream to maximize filter element life and optimize performance.

**Operating temperature\*:**  
Transparent bowl: -30° to 125°F (-34° to 50°C)  
Metal bowl: -30° to 150°F (-34° to 65°C)  
\* Air supply must be dry enough to avoid ice formation at temperatures below 35°F (2°C).

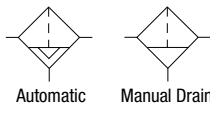
**Filtration:**  
Particle removal: 0.01 µm  
Remaining oil content: 0.01 ppm mg/m3 at 70°F (21°C)

**Materials**  
**F72C**  
Body: zinc  
Bowl transparent: polycarbonate  
Metal: zinc  
Metal bowl liquid level indicator lens: Transparent nylon  
Element: synthetic fiber and polyurethane foam  
Elastomers: chloroprene and nitrile  
Service life indicator materials- Body: transparent nylon.  
Internal parts: acetal.  
Spring: stainless steel.  
Elastomers: nitrile, chloroprene

**Materials**  
**F73C and F74C**  
Body: aluminum  
Transparent bowl: polycarbonate  
Transparent with guard: polycarbonate,  
Guard: aluminum  
Metal bowl: aluminum  
Metal bowl liquid level indicator lens: Transparent nylon  
Element: synthetic fiber and polyurethane foam  
Elastomers: chloroprene and nitrile  
Mechanical service indicator materials Body: transparent nylon  
Internal parts: Acetal  
Spring: Stainless steel  
Elastomers: nitrile

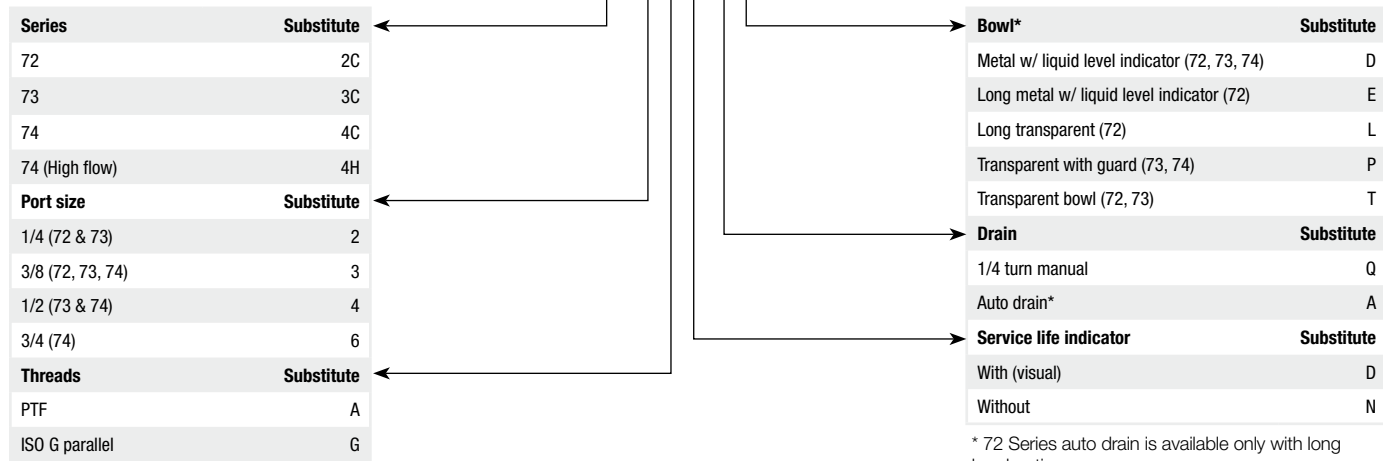
**Ordering information**

Models listed include PTF threads, service indicator, automatic drain, and a metal bowl with liquid level indicator.

| ISO Symbols   | Port Size | Model                  | Maximum Flow*<br>scfm ( dm3/s) | Weight lb (kg) |
|---|-----------|------------------------|--------------------------------|----------------|
|  | 1/4"      | F72C-2AD-AE0           | 9.5 (4.5)                      | 1.2 (0.54)     |
|   | 3/8"      | F73C-3AD-AD0           | 21.2 (10.0)                    | 1.2 (0.54)     |
|   | 1/2"      | F74C-4AD-AD0(std)      | 33.9 (16.0)                    | 1.84 (0.83)    |
|   | 1/2"      | F74H-4AD-AD0 (hi-flow) | 59.3 (28.0)                    | 2.45 (1.11)    |
|   | 3/4"      | F74H-6AD-AD0 (hi-flow) | 59.3 (28.0)                    | 2.40 (1.10)    |

\* Maximum flow with 90 psig (6.3 bar) inlet pressure to maintain stated oil removal performance.

**Options selector**

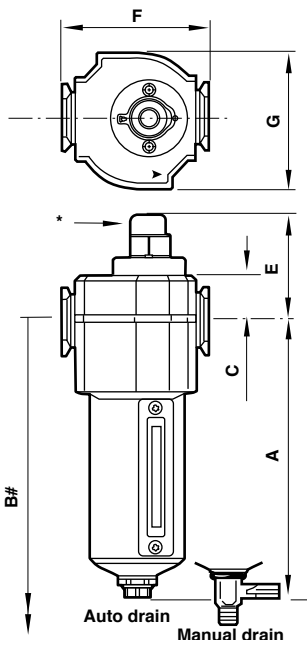


\* 72 Series auto drain is available only with long bowl option.

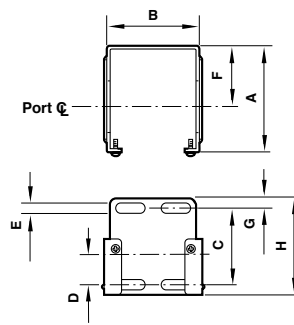
Accessories

|            | Wall mounting bracket* | Quikmount pipe adapters (quantity of 1) (NPT)                    | Quikclamp®† (quantity of 1) | Quikclamp® and wall bracket (quantity of 1) | Visual service indicator | Electrical service life indicator | Service kit Seal and gasket | Replacement elements             |
|------------|------------------------|--|-----------------------------|---|--------------------------|-----------------------------------|-----------------------------|----------------------------------|
| F72C       | 4224-50                | 4215-02 (1/4)<br>4215-03 (3/8)                                   | 4214-51                     | 4214-52                                     |                          |                                   | 4380-500                    | 5925-09                          |
| F73C       | 4424-50                | 4315-01 (1/4)<br>4315-02 (3/8)<br>4315-03 (1/2)<br>4315-04 (3/4) | 4314-51                     | 4314-52                                     | 5797-50                  | 4020-51R                          | 4380-602                    | 4444-01                          |
| F74C, F74H | 4324-50                | 4315-02 (3/8)<br>4315-03 (1/2)<br>4315-04 (3/4)                  | 4314-51                     | 4314-52                                     | 5797-50                  | 4020-51R                          | 4380-730                    | 4344-01 (F74C)<br>4344-02 (F74H) |

\* Bracket kit does not include wall mounting screws.  
† Quikclamp is patented (US patent 5372392) and foreign patents.



Mounting bracket

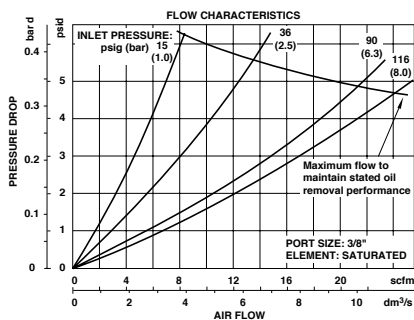


| Series | A    | B    | C    | D    | E    | F    | G    | H    |
|--------|------|------|------|------|------|------|------|------|
| 72     | 2.36 | 1.65 | 1.54 | 0.73 | 0.16 | 1.50 | 0.24 | 2.01 |
| 73     | 2.64 | 2.36 | 1.89 | 0.75 | 0.28 | 1.50 | 0.24 | 2.40 |
| 74     | 3.11 | 2.72 | 1.97 | 0.79 | 0.20 | 2.01 | 0.24 | 2.40 |

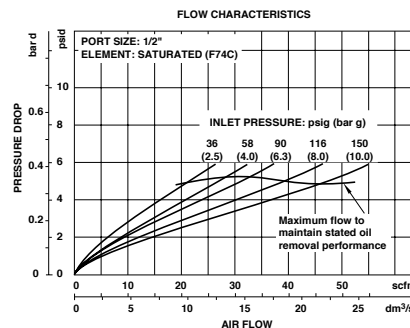
| Series | Drain type | A    | B     | C    | E    | F    | G    |
|--------|------------|------|-------|------|------|------|------|
| F72C   | Auto       | 5.51 | 7.52  | 0.75 | 2.09 | 1.97 | 1.89 |
|        | Manual     | 5.83 | 7.83  | 0.75 | 2.09 | 1.97 | 1.89 |
| F73C   | Auto       | 5.80 | 8.15  | 0.98 | 2.36 | 2.68 | 2.44 |
|        | Manual     | 6.15 | 8.50  | 0.98 | 2.36 | 2.68 | 2.44 |
| F74C   | Auto       | 6.35 | 9.17  | 0.98 | 2.36 | 3.15 | 2.91 |
|        | Manual     | 6.95 | 9.80  | 0.98 | 2.36 | 3.15 | 2.91 |
| F74H   | Auto       | 8.44 | 11.18 | 0.98 | 2.36 | 3.15 | 2.91 |
|        | Manual     | 9.04 | 11.81 | 0.98 | 2.36 | 3.15 | 2.91 |

\* Standard service indicator  
# Minimum clearance required to remove bowl

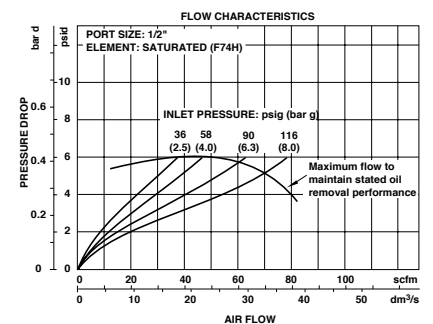
F73



F74C



F74H



Dimensions in inches (mm)