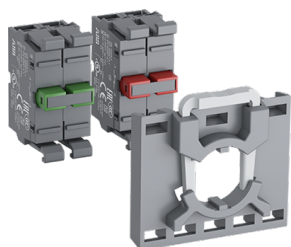


PRODUCT-DETAILS

M3SS1-40B-11

M3SS1-40B-11 Selector Switch



General Information

Extended Product Type	M3SS1-40B-11
Product ID	1SFA611210R4076
EAN	7320500293713
Catalog Description	M3SS1-40B-11 Selector Switch
Long Description	Modular Selector Switch - 3-Pos Maintained - Short handle - Black - Non-illuminated - Black plastic - 1NO+1NC

Ordering

E-Number (Sweden)	3716016
EAN	7320500293713
Minimum Order Quantity	10 piece
Customs Tariff Number	8536501999

Dimensions

Product Net Width	0.048 m
Product Net Height	0.03 m
Product Net Depth / Length	0.078 m
Product Net Weight	0.056 kg

Container Information

Package Level 1 Units	1 piece
Package Level 1 Width	0.11 m
Package Level 1 Height	0.03 m
Package Level 1 Depth / Length	0.15 m
Package Level 1 Gross Weight	0.056 kg

Environmental

RoHS Status	Following EU Directive 2011/65/EU
-------------	-----------------------------------

Additional Information

Actuator Type	Short handle
Bezel Material	Black Plastic
Block	1NO+1NC
Color	Black
Degree of Protection	Front IP66 Terminals IP20
Device	Holder for blocks incl.
Function	Maintained
Illumination	Non-illuminated
Maintained Positions	A, B, C
Mechanical Durability	0.5 million
Mounting Position	Horizontally mounted
Number of Auxiliary Contacts NC	1
Number of Auxiliary Contacts NO	1
Product Main Type	M3SS1
Product Name	Selector Switch
Product Range	Modular
Product Type	M3SS
Rated Frequency (f)	Supply Circuit 60 50 Hz
Rated Operational Current AC-15 (I _e)	(220 / 240 V) 6 A (24 / 127 V) 8 A
Rated Operational Current DC-13 (I _e)	(125 V) 1.1 A (24 V) 5
RoHS Date	0635 4
Sub-Function	3-position

Certificates and Declarations (Document Number)

Data Sheet, Technical Information	1SFC151007C02__
Declaration of Conformity - CE	2CMT2015-005452
Environmental Information	1SFC151010D0201
Instructions and Manuals	1SFC151011M0201
RoHS Information	2CMT2015-005452

Classifications

ETIM 4	EC002024 - Accessories for control circuit devices
ETIM 5	EC000222 - Front element for selector switch
ETIM 6	EC000222 - Front element for selector switch
ETIM 7	EC001029 - Selector switch, complete
Object Classification Code	S
WEEE Category	5. Small Equipment (No External Dimension More Than 50 cm)

Categories

Low Voltage Products and Systems → Control Products → Pilot Devices → Modular Plastic Range

