

BALDOR® • RELIANCE 

Product Information Packet

ZDVSM3661T

3HP, 1755RPM, 3PH, 60HZ, 182TC, 0632M, TEFC, F1

Part Detail							
Revision:	K	Status:	PRD/A	Change #:		Proprietary:	No
Type:	AC	Elec. Spec:	06WGX181	CD Diagram:	CD0005	Mfg Plant:	
Mech. Spec:	06H928	Layout:	06LYH928	Poles:	04	Created Date:	09-05-2012
Base:	RG	Eff. Date:	01-18-2018	Leads:	9#16		

Specs			
Catalog Number:	ZDVSM3661T	Insulation Class:	F
Enclosure:	TEFC	Inverter Code:	Inverter Duty
Frame:	182TC	KVA Code:	J
Frame Material:	Iron	Lifting Lugs:	Standard Lifting Lugs
Output @ Frequency:	3.000 HP @ 60 HZ	Locked Bearing Indicator:	Locked Bearing
Synchronous Speed @ Frequency:	1800 RPM @ 60 HZ	Motor Lead Quantity/Wire Size:	9 @ 16 AWG
Voltage @ Frequency:	230.0 V @ 60 HZ	Motor Lead Exit:	Ko Box
	460.0 V @ 60 HZ	Motor Lead Termination:	Flying Leads
XP Class and Group:	None	Motor Type:	0632M
XP Division:	Not Applicable	Mounting Arrangement:	F1
Agency Approvals:	UR	Power Factor:	77
	CSA	Product Family:	General Purpose
Auxillary Box:	No Auxillary Box	Pulley End Bearing Type:	Ball
Auxillary Box Lead Termination:	None	Pulley Face Code:	C-Face
Base Indicator:	Rigid	Pulley Shaft Indicator:	Standard
Bearing Grease Type:	Polyrex EM (-20F +300F)	Rodent Screen:	None
Blower:	None	Shaft Extension Location:	Pulley End
Current @ Voltage:	4.100 A @ 460.0 V	Shaft Ground Indicator:	No Shaft Grounding

	8.200 A @ 230.0 V	Shaft Rotation:	Reversible
Design Code:	B	Shaft Slinger Indicator:	Shaft Slinger
Drip Cover:	No Drip Cover	Speed Code:	Single Speed
Duty Rating:	CONT	Motor Standards:	NEMA
Electrically Isolated Bearing:	Not Electrically Isolated	Starting Method:	Direct on line
Feedback Device:	ENCODER	Thermal Device - Bearing:	None
Front Face Code:	Encoder/Feedback Device	Thermal Device - Winding:	Normally Closed Thermostat
Front Shaft Indicator:	No Key Or Flat	Vibration Sensor Indicator:	No Vibration Sensor
Heater Indicator:	No Heater	Winding Thermal 1:	None
		Winding Thermal 2:	None

Nameplate NP3303L	
CAT NO	ZDVSM3661T
SPEC.	06H928X181Z1
FRAME	182TC HP 3 TE
VOLTS	230/460
MAG CUR	4.2/2.1 FLA 8.2/4.1
RPM	1755 RPM MAX 5400
HZ	60 PH 3 CLASS F
SER.F.	1.00 SL HZ 1.5
NEMA-NOM-EFF	89.5 WK2 0.3
RATING	40C AMB-CONT
DE BRG	6206 ODE BRG 6206
CC	010A SN
	1.5:1 CHP PWM

Parts List		
Part Number	Description	Quantity
SA251083	SA 06H928X181Z1	1.000 EA
RA237927	RA 06H928X181Z1	1.000 EA
HW3201A05	3/8-16 EYEBOLT	1.000 EA
06CB1000A03	CONDUIT BOX, MACH	1.000 EA
06GS1000	GASKET,CONDUIT BOX	1.000 EA
51XW2520A12	SCREW, HEX SER SLT HD, ZN, 1/4-20 X .75	2.000 EA
11XW1032G06	10-32 X .38, TAPTITE II, HEX WSHR SLTD U	1.000 EA
HW3001B01	BRASS CUP WASHER, FOR #10 SCREW	1.000 EA
36EP1905A14	FREP FOR SPL CI FANCOVER, 206 BRG	1.000 EA
HW4500A01	1641B(ALEMITE)400 UNIV, GREASE FITT	1.000 EA
HW5100A06	W2420-025 WVY WSHR (WB)	1.000 EA
36PE1300A01	PU ENDPLATE, MACH	1.000 EA
HW4500A01	1641B(ALEMITE)400 UNIV, GREASE FITT	1.000 EA
10XN2520A26	1/4-20X 1 5/8 HEX HD	4.000 EA
HW1001A25	LOCKWASHER 1/4, ZINC PLT .493 OD, .255 I	4.000 EA
HA3101A34	THRUBOLT- 1/4-20 X 10.375	4.000 EA
06FH1005A16	FAN COVER, MACH FOR 36EP1905A14	1.000 EA
WD4100A02	DP-1000 HEYCO PLUG OR 62MP1000 MICRO PL	1.000 EA
10XN2520A36	1/4-20X 2 1/4 HEX HD X	4.000 EA
HW1001A25	LOCKWASHER 1/4, ZINC PLT .493 OD, .255 I	4.000 EA
HA1100A06	SCREEN, RODENT	1.000 EA
51XT1032A04	10-32X1/4 HX WA SL SR TYT (F/S)	4.000 EA
HA6881	BEI HS35 THRU SHAFT ENCODER PROTECTIVE C	1.000 EA
10XN3816A10	3/8-16 X 5/8 HEX HD CAP SCREW	3.000 EA

Parts List (continued)		
Part Number	Description	Quantity
06CB1500A01	CONDUIT BOX LID, MACH	1.000 EA
06GS1001	BALDOR CONDUIT BOX GASKET	1.000 EA
10XN2520A12	1/4-20 X 3/4 HEX HEAD CAP	2.000 EA
HW1001A25	LOCKWASHER 1/4, ZINC PLT .493 OD, .255 I	2.000 EA
HW2501E16	KEY, 1/4 SQ X 1.750	1.000 EA
HA7000A02	KEY RETAINER RING, 1 1/8 DIA, 1 3/8 DIA	1.000 EA
85XU0407S04	4X1/4 U DRIVE PIN STAINLESS	2.000 EA
LB1115N	LABEL,LIFTING DEVICE (ON ROLLS)	1.000 EA
MJ1000A02	GREASE, MOBIL POLYREX EM - 124047	0.050 LB
36FN3000C02SP	EXFN, PLASTIC, 5.25 OD, 1.175 ID	1.000 EA
51XB1214A16	12-14X1.00 HXWSSLD SERTYB	1.000 EA
OE5001A128	ENCDR KIT TENV W/OEHS35A56 W/BLIND SHAFT	1.000 EA
MG1025N19	MUNSELL 8.5BG 3.57/2.0, GLOSS 30, B/G,	0.028 GA
LB1119N	WARNING LABEL	1.000 EA
LC0145B01	CONNECTION LABEL	1.000 EA
NP3303L	SS VEC UL CSA CC (W/OUT DESIGN FIELD)	1.000 EA
G0PA1000	PKG GRP, PRINT PK1026A06	1.000 EA
MN416A01	TAG-INSTAL-MAINT no wire (1200/bx) 3/19	1.000 EA

Catalog	ZDVSM3661T	NP VOLTS	230/460	ENCLOSURE	TEFC	WYE CONN EQ. CKT OHMS PER PHASE (BASE RATING, 200)			
FRAME	182TC	NP AMPS	8.2/4.1	MAX SAFE RPM	2700	R1	2.080	X1	5.490
HP	3	DUTY	Cont	NL AMPS	2.14	R2	1.478	X2	4.58
BASE SPEED	1755	S.F.	1.00	P.F. @NL/FL	0/77			XM	119.332
PHASE/HZ	3/60	AMIB [®] C/INSUL	40/F	WK ² (lb-ft ²)	0.298				

Rated Full Load Data

	RPM	HP	Torque	Volts	Freq-Hz	Amps
Base Speed	1757	3.0	9.1	460	60	4.1
Max Speed	2634	3.0	6.0	460	90	3.8
Min Speed	0	0.0	9.1	33.49	1.43	4.1

Load Performance at Base Speed

	RPM	HP	Torque	Volts	Freq-Hz	Amps
No Load	1799	0.0	0.0	460	60	2.1
1/4	1790	0.8	2.3	460	60	2.3
1/2	1779	1.5	4.5	460	60	2.8
3/4	1769	2.3	6.8	460	60	3.4
Full Load	1757	3.0	9.1	460	60	4.1
O/L	1712	6.1	18.6	460	60	7.8

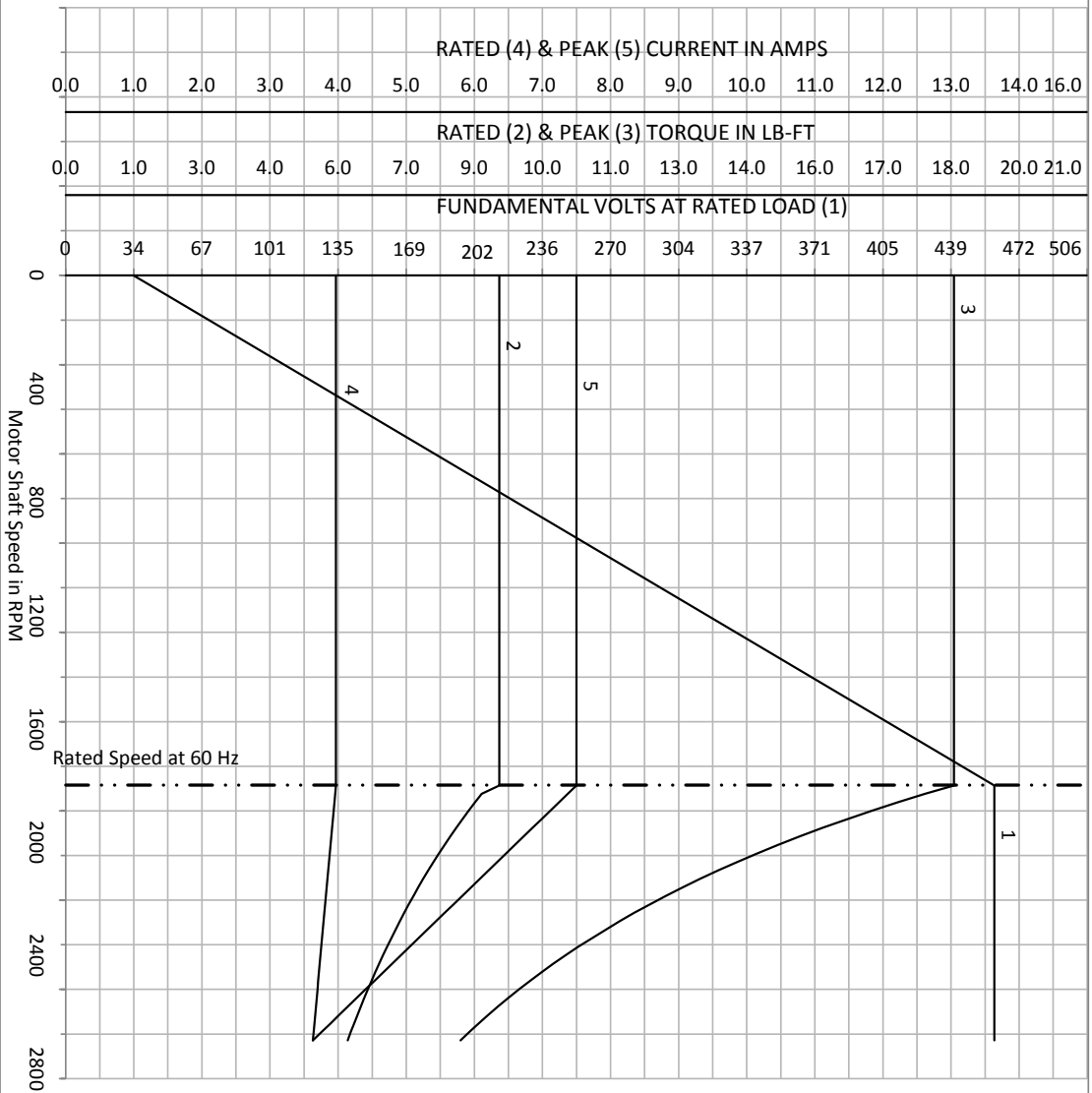
Blower Data	Volts	Pn/Hz	FL Amps	LR Amps	Frame	CFM

Remarks: Calculated Data
Vector PWM Inverter Duty

 A MEMBER OF THE ABB GROUP	DR BY	<u>HDO</u>	A-C MOTOR PERFORMANCE CURVES	06H928X181Z1 <small>ISSUE DATE: 3/17/2015</small>
	CK BY			
	APP BY	<u>HDO</u>		
	DATE	<u>3/17/2015</u>		

Catalog	ZDVSM3661T	VOLTS	230/460	ENCLOSURE	TEFC	WVE CONN	EQ.CKT	OHMS PER PHASE (BASE RATING, 200)
FRAME	182TC	AMPS	8.2/4.1	MAX SAFE RPM	2700	R1	2.08	X1 5.49
HP	3	DUTY	Cont	In (AMPS)	2.14	R2	1.478	X2 4.581
BASE SPEED	1755	S.F.	1.00	P.F. @NL/FL	0/77	XM		119.332
PHASE/HZ	3/60	AMB °C/INSI	40/F	WK² (lb-ft²)	0.298			

Vector PWM Inverter Duty
Variable Speed AC Motor Curves



Calculated Data

Data Valid For Nameplate Speed Range only

BALDOR

A MEMBER OF THE ABB GROUP

DR BY HDO

CK BY HDO

APP BY HDO

DATE 3/17/2015

A-C MOTOR

PERFORMANCE

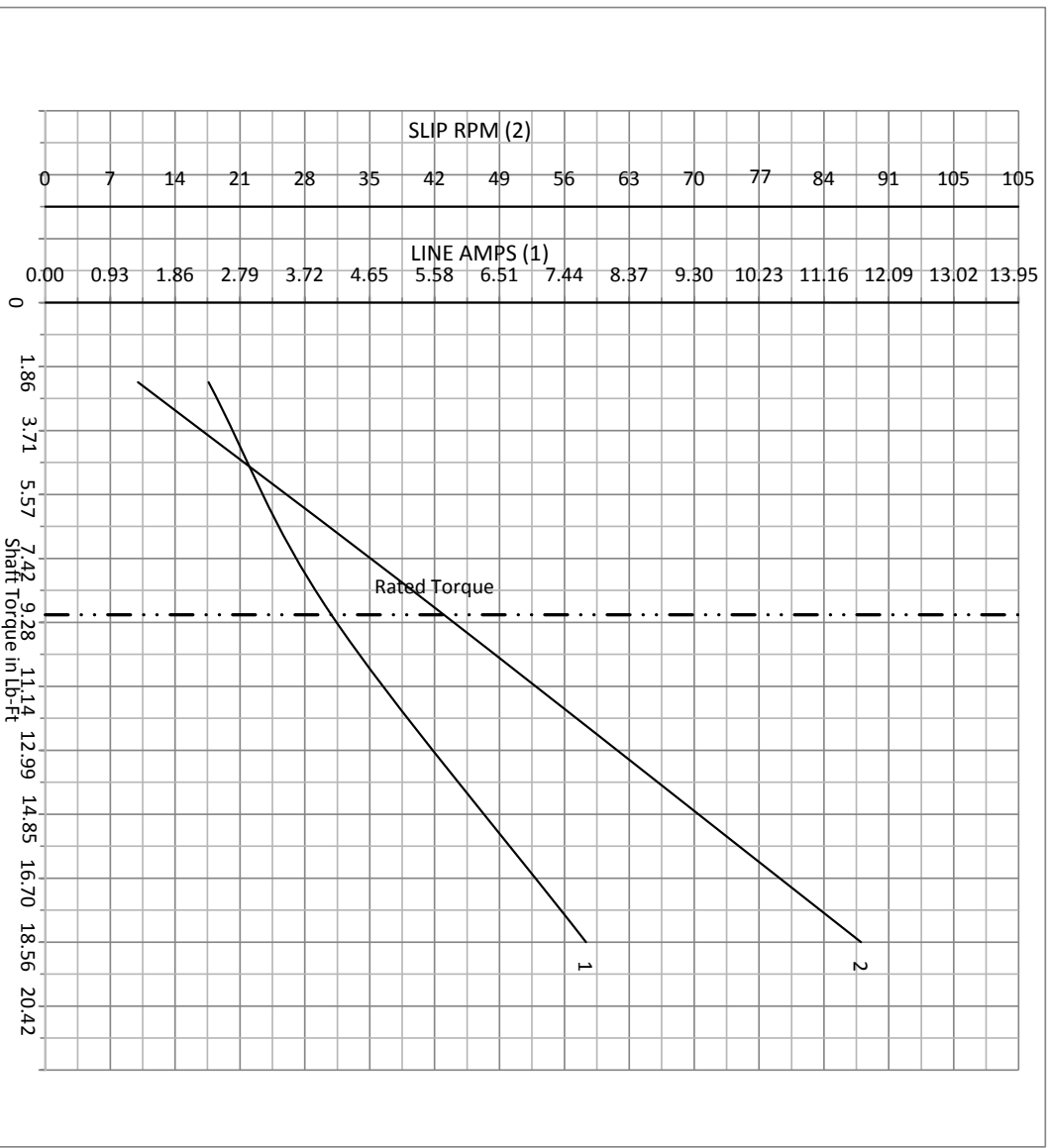
CURVES

ISSUE DATE: 3/17/2015

06H928X181Z1

Catalog	ZDVSM3661T	NP VOLTS	230/460	ENCLOSURE	TEFC	WYE CONN EQ.CKT OHMS PER PHASE (BASE RATING, 200)			
FRAME	182TC	NP AMPS	8.2/4.1	MAX SAFE RPM	2700	R1	2.08	X1	5.49
HP	3	DUTY	Cont	NL AMPS	2.14	R2	1.478	X2	4.581
BASE SPEED	1755	S.F.	1.00	P.F. @NL/FL	0/77			XM	119.332
PHASE/HZ	3/60	AMB ³ C/INSUL	40/F	WK ² (lb-ft ²)	0.298				

Vector PWM Inverter Duty
Variable Speed AC Motor Curves

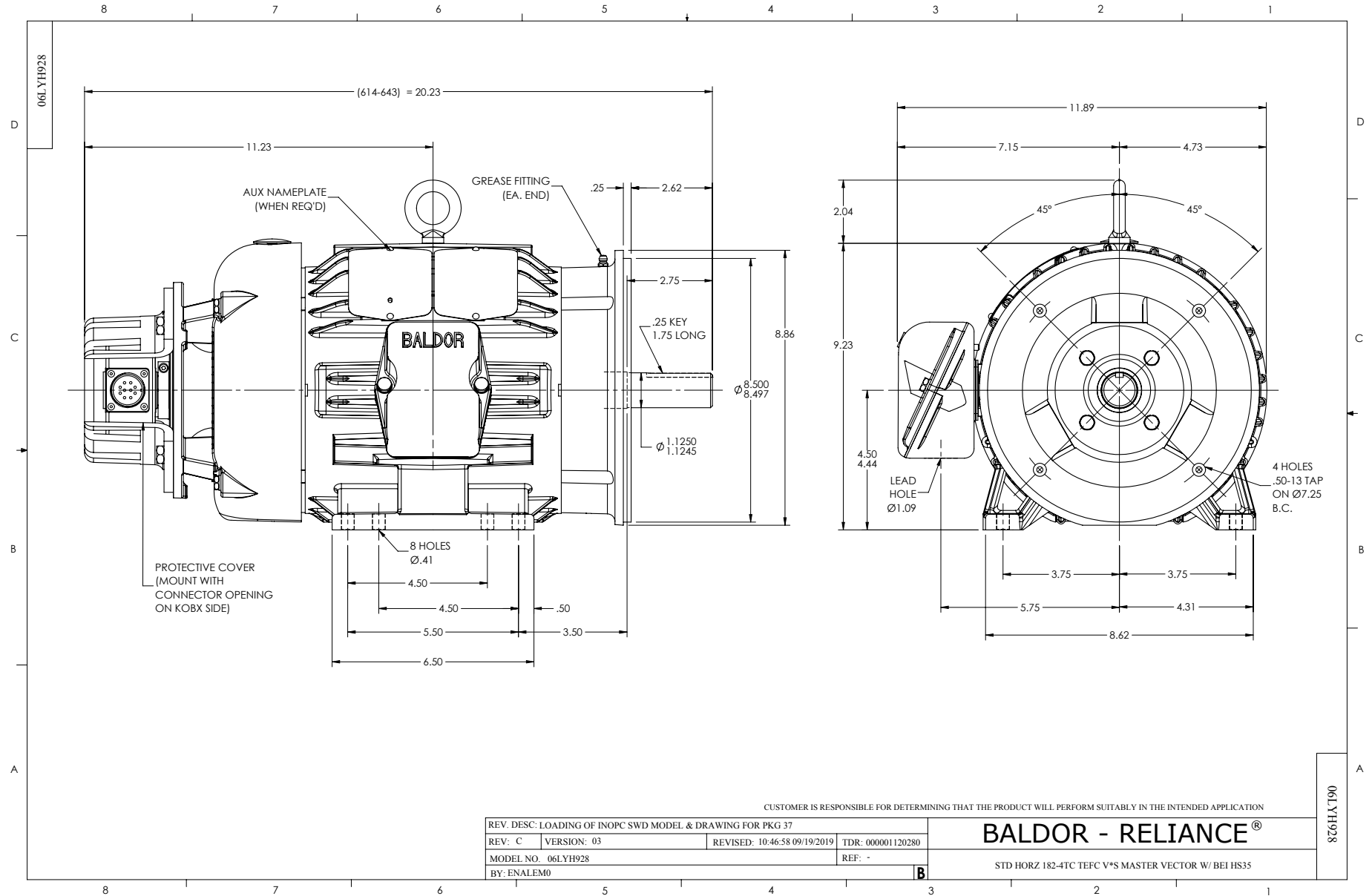


Calculated Data

Data Valid For Nameplate Speed Range only

BALDOR
A MEMBER OF THE ABB GROUP

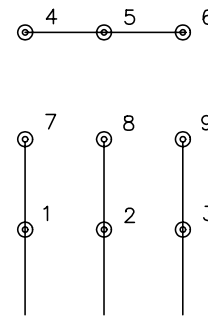
DR BY	HDO	A-C MOTOR	06H928X181Z1
CK BY		PERFORMANCE	
APP BY	HDO	CURVES	
DATE	3/17/2015	ISSUE DATE	3/17/2015



CD0005

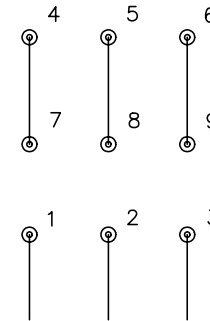


LOW VOLTAGE
(2Y)



LINE

HIGH VOLTAGE
(1Y)



LINE

NOTES:

1. INTERCHANGE ANY TWO LINE LEADS TO REVERSE ROTATION.
2. OPTIONAL THERMOSTATS ARE PROVIDED WHEN SPECIFIED.
3. ACTUAL NUMBER OF INTERNAL PARALLEL CIRCUITS MAY BE A MULTIPLE OF THOSE SHOWN ABOVE.
4. LEAD COLORS ARE OPTIONAL. LEADS MUST ALWAYS BE NUMBERED AS SHOWN.

REV. DESC: REVISE TO SHOW OPTIONAL COLORS

REV. LTR: E BY: JLP

REVISED: 01/19/99 10:15

TDR: 0171435

90000

FILE: AAA00005140

MDL: -

MTL: -

BALDOR ELECTRIC Co.

3PH, DV, 9 LEADS

CD0005