

BALDOR® • RELIANCE 

Product Information Packet

CM3542

.75HP, 1725RPM, 3PH, 60HZ, 56C, 3420M, TEFC, F1

| Part Detail | | | | | | | |
|-------------|--------|-------------|------------|-------------|--------|---------------|----|
| Revision: | W | Status: | PRD/A | Change #: | | Proprietary: | No |
| Type: | AC | Elec. Spec: | 34WG0883 | CD Diagram: | CD0005 | Mfg Plant: | |
| Mech. Spec: | 34A062 | Layout: | 34LYA062 | Poles: | 04 | Created Date: | |
| Base: | RG | Eff. Date: | 10-30-2018 | Leads: | 9#18 | | |

| Specs | | | |
|---------------------------------|-------------------------|--------------------------------|-----------------|
| Catalog Number: | CM3542 | Heater Indicator: | No Heater |
| Enclosure: | TEFC | Insulation Class: | B |
| Frame: | 56C | Inverter Code: | Not Inverter |
| Frame Material: | Steel | KVA Code: | K |
| Output @ Frequency: | .750 HP @ 60 HZ | Lifting Lugs: | No Lifting Lugs |
| Synchronous Speed @ Frequency: | 1800 RPM @ 60 HZ | Locked Bearing Indicator: | Locked Bearing |
| Voltage @ Frequency: | 208.0 V @ 60 HZ | Motor Lead Quantity/Wire Size: | 9 @ 18 AWG |
| | 460.0 V @ 60 HZ | Motor Lead Exit: | Ko Box |
| | 230.0 V @ 60 HZ | Motor Lead Termination: | Flying Leads |
| XP Class and Group: | None | Motor Type: | 3420M |
| XP Division: | Not Applicable | Mounting Arrangement: | F1 |
| Agency Approvals: | CSA | Power Factor: | 60 |
| | UR | Product Family: | General Purpose |
| Auxillary Box: | No Auxillary Box | Pulley End Bearing Type: | Ball |
| Auxillary Box Lead Termination: | None | Pulley Face Code: | C-Face |
| Base Indicator: | Rigid | Pulley Shaft Indicator: | Standard |
| Bearing Grease Type: | Polyrex EM (-20F +300F) | Rodent Screen: | None |
| Blower: | None | Shaft Extension Location: | Pulley End |

| | | | |
|---------------------------------------|---------------------------|------------------------------------|---------------------|
| Current @ Voltage: | 3.600 A @ 208.0 V | Shaft Ground Indicator: | No Shaft Grounding |
| | 3.200 A @ 208.0 V | Shaft Rotation: | Reversible |
| | 3.000 A @ 230.0 V | Shaft Slinger Indicator: | No Slinger |
| | 1.500 A @ 460.0 V | Speed Code: | Single Speed |
| Design Code: | B | Motor Standards: | NEMA |
| Drip Cover: | No Drip Cover | Starting Method: | Direct on line |
| Duty Rating: | CONT | Thermal Device - Bearing: | None |
| Electrically Isolated Bearing: | Not Electrically Isolated | Thermal Device - Winding: | None |
| Feedback Device: | NO FEEDBACK | Vibration Sensor Indicator: | No Vibration Sensor |
| Front Face Code: | Standard | Winding Thermal 1: | None |
| Front Shaft Indicator: | None | Winding Thermal 2: | None |

| Nameplate NP1256L | | | | | | | | | | |
|-------------------|-----------------|--|------|----|-----|------|--|----------------|-----|---|
| CAT.NO. | CM3542 | | | | | | | | | |
| SPEC. | 34A62-883 | | | | | | | | | |
| HP | .75 | | | | | | | | | |
| VOLTS | 208-230/460 | | | | | | | | | |
| AMP | 3.2-3/1.5 | | | | | | | | | |
| RPM | 1725 | | | | | | | | | |
| FRAME | 56C | | | | HZ | 60 | | | PH | 3 |
| SER.F. | 1.25 | | CODE | K | DES | B | | CLASS | B | |
| NEMA-NOM-EFF | 75.5 | | PF | 60 | | | | | | |
| RATING | 40C AMB-CONT | | | | | | | | | |
| CC | | | | | | | | USABLE AT 208V | 3.6 | |
| DE | 6203 | | | | ODE | 6203 | | | | |
| ENCL | TEFC | | SN | | | | | | | |
| | SFA 3.6-3.4/1.7 | | | | | | | | | |

| Parts List | | |
|---------------|--|----------|
| Part Number | Description | Quantity |
| SA009839 | SA 34A62-883 | 1.000 EA |
| RA006284 | RA 34A62-883 | 1.000 EA |
| NS2512A01 | INSULATOR, CONDUIT BOX X | 1.000 EA |
| 34CB3002A | CB CAST W/.88 DIA HOLE | 1.000 EA |
| 34GS1029A01 | GASKET, CONDUIT BOX | 1.000 EA |
| 51XB1016A07 | 10-16 X 7/16 HXWSSLD SERTYB | 2.000 EA |
| 11XW1032G06 | 10-32 X .38, TAPTITE II, HEX WSHR SLTD U | 1.000 EA |
| 34EP3102A01SP | FR ENDPLATE, MACH | 1.000 EA |
| HW5100A03 | WAVY WASHER (W1543-017) | 1.000 EA |
| 34EP3300A24SP | PU ENDPLATE, MACH | 1.000 EA |
| 51XN1032A20 | 10-32 X 1 1/4 HX WS SL SR | 2.000 EA |
| 34FN3002A01SP | EXTERNAL FAN, PLASTIC, .637/.639 HUB W/ | 1.000 EA |
| 34FH4002A01SP | IEC FH NO GREASER PRIMED | 1.000 EA |
| 51XW1032A06 | 10-32 X .38, TAPTITE II, HEX WSHR SLTD S | 3.000 EA |
| 34CB4517 | CB LID 4 MTG HOLES .22 DIA STAMPED, FOR | 1.000 EA |
| 34GS1031A01 | GASKET, FLAT CONDUIT BOX LID (LEXIDE) | 1.000 EA |
| 51XW0832A07 | 8-32 X .44, TAPTITE II, HEX WSHR SLTD SE | 4.000 EA |
| HW2501D13 | KEY, 3/16 SQ X 1.375 | 1.000 EA |
| HA7000A04 | KEY RETAINER 0.625 DIA SHAFTS | 1.000 EA |
| MN416A01 | TAG-INSTAL-MAINT no wire (1200/bx) 3/19 | 1.000 EA |
| MG1000G27 | MED CHARCOAL METALLIC GREY 400-0096 | 0.014 GA |
| 85XU0407S04 | 4X1/4 U DRIVE PIN STAINLESS | 2.000 EA |
| HA3100A12 | THRUBOLT 10-32 X 7.375 | 4.000 EA |
| LC0005E01 | CONN.DIA./WARNING LABEL (LC0005/LB1119N) | 1.000 EA |

| Parts List (continued) | | |
|-------------------------------|-------------------------------------|-----------------|
| Part Number | Description | Quantity |
| NP1256L | ALUM UL CSA CC INDUSTRIAL MOTOR A60 | 1.000 EA |
| 34PA1002 | PKG GRP, PRINT PK1001A01 | 1.000 EA |

AC Induction Motor Performance Data
Record # 6605 - Typical performance - not guaranteed values

| | | |
|-------------------------------|--------------------|------------------------|
| Winding: 34WG0883-R001 | Type: 3420M | Enclosure: TEFC |
|-------------------------------|--------------------|------------------------|

| Nameplate Data | | | | 460 V, 60 Hz: High Voltage Connection | |
|-----------------------|--------------|--------------|----|--|---------------------------|
| Rated Output (HP) | .75 | | | Full Load Torque | 2.25 LB-FT |
| Volts | 208-230/460 | | | Start Configuration | direct on line |
| Full Load Amps | 3.2-3/1.5 | | | Breakdown Torque | 10 LB-FT |
| R.P.M. | 1725 | | | Pull-up Torque | 8.5 LB-FT |
| Hz | 60 | Phase | 3 | Locked-rotor Torque | 8.8 LB-FT |
| NEMA Design Code | B | KVA Code | K | Starting Current | 10 A |
| Service Factor (S.F.) | 1.25 | | | No-load Current | 1.2 A |
| NEMA Nom. Eff. | 75.5 | Power Factor | 60 | Line-line Res. @ 25°C | 18.3 Ω |
| Rating - Duty | 40C AMB-CONT | | | Temp. Rise @ Rated Load | 74°C |
| S.F. Amps | 3.6-3.4/1.7 | | | Temp. Rise @ S.F. Load | 87°C |
| | | | | Locked-rotor Power Factor | 57.5 |
| | | | | Rotor inertia | 0.0476 LB-FT ² |

Load Characteristics 460 V, 60 Hz, 0.75 HP

| % of Rated Load | 25 | 50 | 75 | 100 | 125 | 150 | S.F. |
|-----------------|------|------|------|------|------|------|------|
| Power Factor | 27 | 42 | 54 | 61 | 70 | 75 | 71 |
| Efficiency | 56.1 | 70 | 74.8 | 76.2 | 76 | 75.3 | 76.1 |
| Speed | 1783 | 1766 | 1749 | 1731 | 1711 | 1693 | 1711 |
| Line amperes | 1.2 | 1.2 | 1.3 | 1.5 | 1.6 | 1.8 | 1.6 |

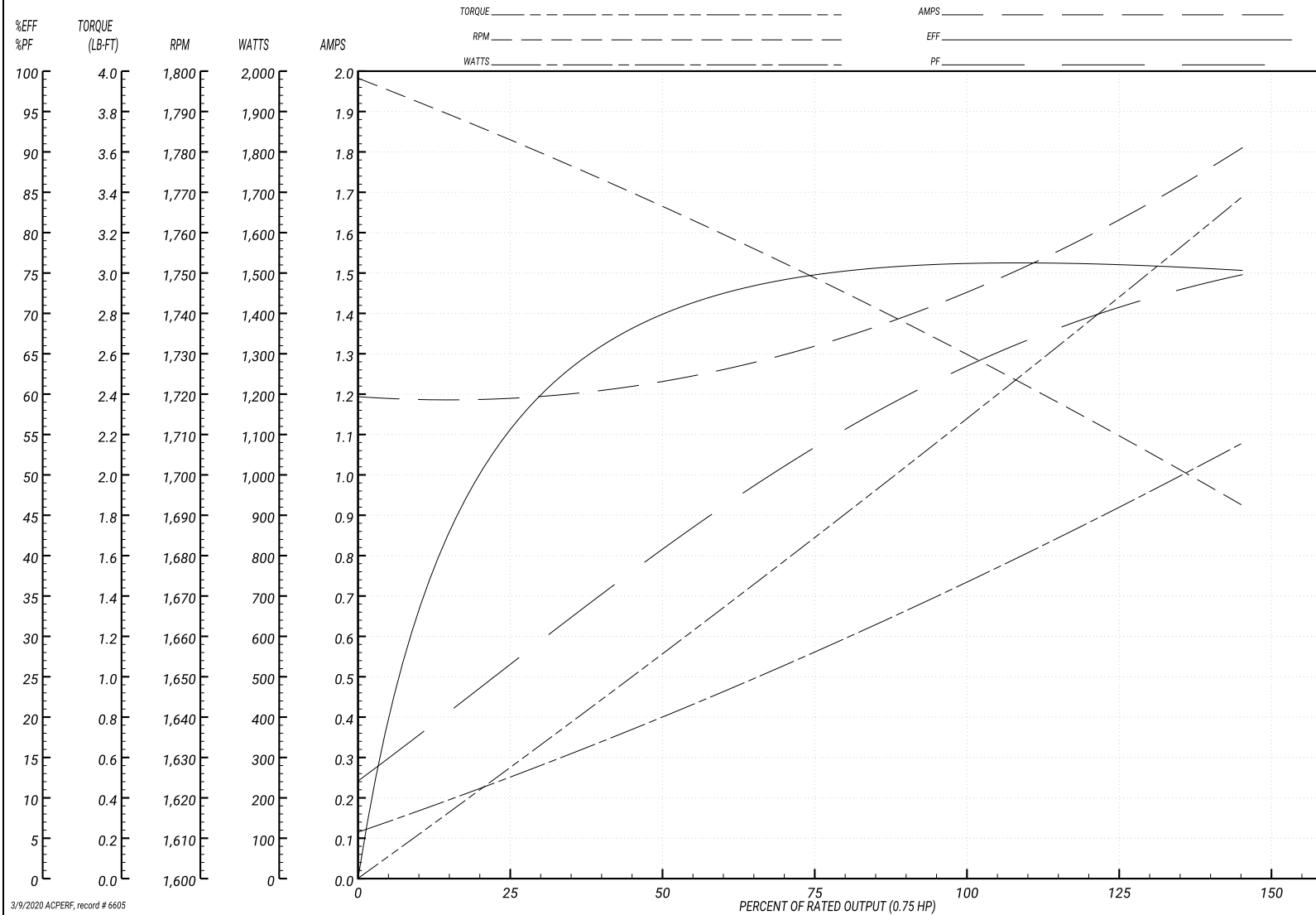
Performance Graph at 460V, 60Hz, 0.75HP Typical performance - Not guaranteed values

ABB Motors and Mechanical Inc.

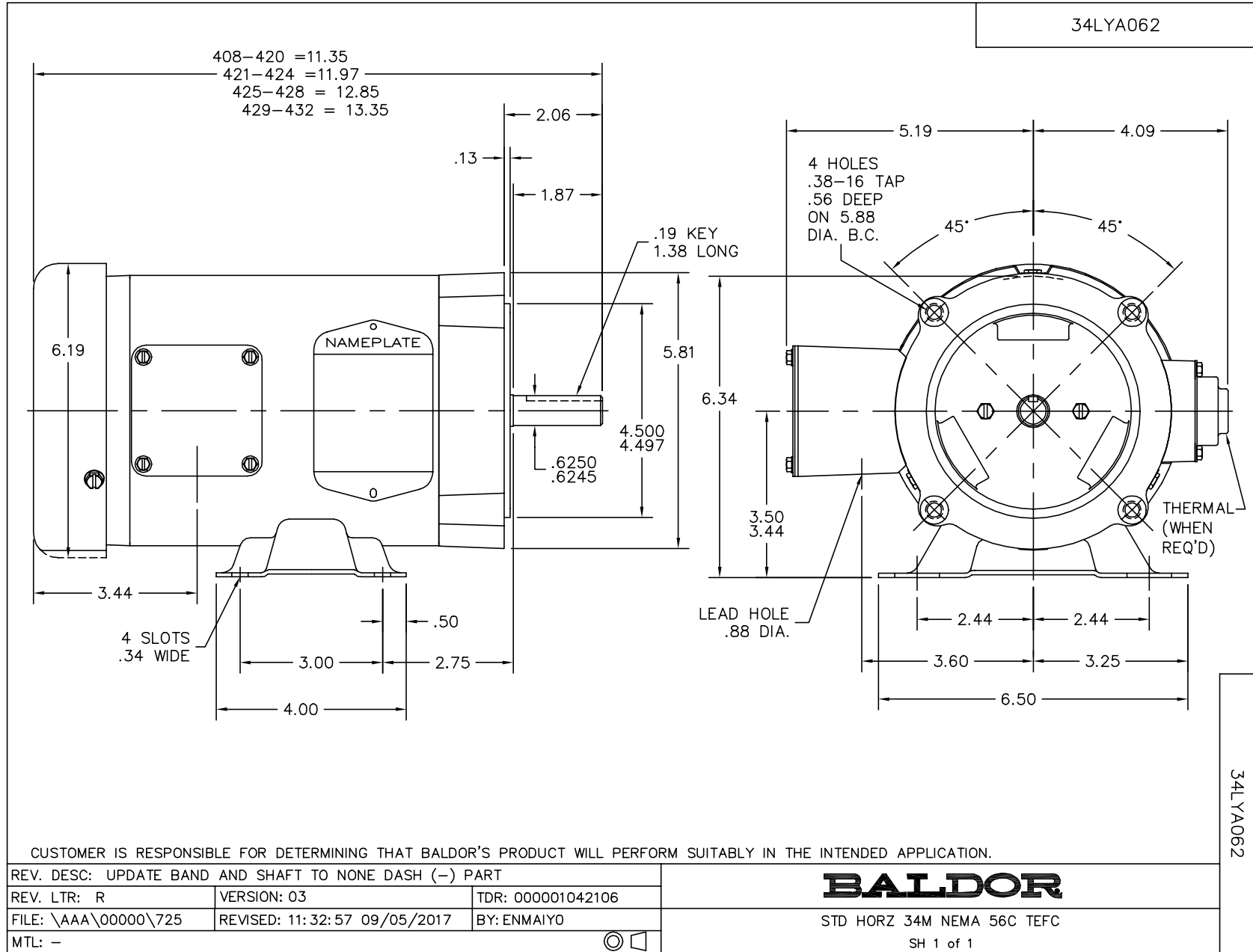
WINDING # 34WG0883

Typical performance - not guaranteed values.

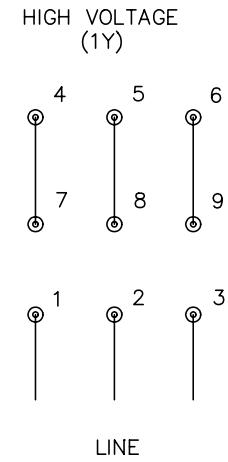
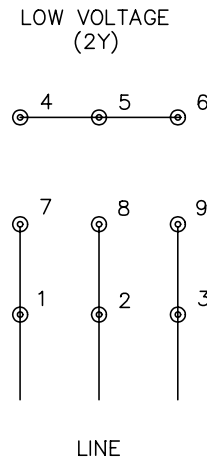
0.75 HP 3 PH 60 HZ 1725 RPM 460 V 3420M
 TORQUES(LB-FT): PO=10 PU=8.5 LR=8.8 LRA=10



3/9/2020 ACPERF, record # 6605



CD0005



NOTES:

1. INTERCHANGE ANY TWO LINE LEADS TO REVERSE ROTATION.
2. OPTIONAL THERMOSTATS ARE PROVIDED WHEN SPECIFIED.
3. ACTUAL NUMBER OF INTERNAL PARALLEL CIRCUITS MAY BE A MULTIPLE OF THOSE SHOWN ABOVE.
4. LEAD COLORS ARE OPTIONAL. LEADS MUST ALWAYS BE NUMBERED AS SHOWN.

| | | | |
|---|---------|-------------------------|--------------|
| REV. DESC: REVISE TO SHOW OPTIONAL COLORS | | | |
| REV. LTR: E | BY: JLP | REVISED: 01/19/99 10:15 | TDR: 0171435 |
| 900000 | | FILE: AAA00005140 | MDL: - |
| | | MTL: - | |

BALDOR ELECTRIC Co.

3PH, DV, 9 LEADS

CD0005