

**PLEASE CHECK WWW.MOLEX.COM FOR LATEST PART INFORMATION**

**Part Number:** [1501761020](#)  
**Status:** **Active**  
**Overview:** [EconoLatch Wire-to-Wire Interconnects](#)  
**Description:** EconoLatch Plug Housing, Single Row, with Panel Mount Latch, 2 Circuits

**Documents:**

[3D Model](#) [RoHS Certificate of Compliance \(PDF\)](#)  
[3D Model \(PDF\)](#) [Product Literature \(PDF\)](#)  
[Drawing \(PDF\)](#)

**Agency Certification**

UL E29179

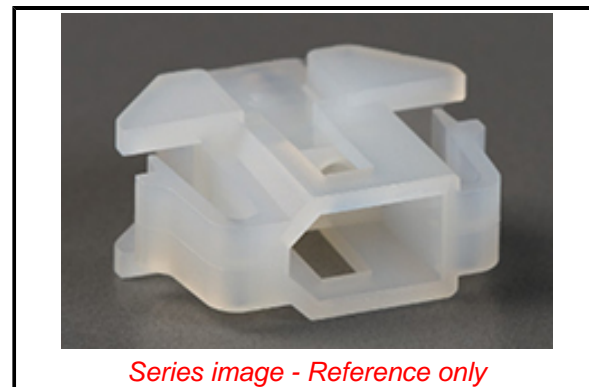
**General**

Product Family Crimp Housings  
Series [150176](#)  
Application Power, Wire-to-Wire  
Overview [EconoLatch Wire-to-Wire Interconnects](#)  
Product Name EconoLatch  
UPC 889056490252

**Physical**

Circuits (maximum) 2  
Color - Resin Natural  
Flammability 94V-2  
Gender Plug  
Glow-Wire Capable No  
Keying to Mating Part None  
Lock to Mating Part Yes  
Material - Resin Nylon  
Net Weight 1.242/g  
Number of Rows 1  
Packaging Type Bag  
Panel Mount Yes  
Pitch - Mating Interface 3.68mm  
Pitch - Termination Interface 3.68mm  
Polarized to Mating Part Yes  
Stackable No  
Temperature Range - Operating -40° to +105°C

**Material Info**



*Series image - Reference only*

**EU ELV**

**Compliant**

**EU RoHS**

**Compliant**

**REACH SVHC**

Not Contained Per -  
ECHA\_01\_2020 (16  
January 2020

**Halogen-Free**

**Status**

**Low-Halogen**

For more information, please visit [Contact US](#)

China ROHS

ELV

RoHS Phthalates

**China RoHS**

Green Image

Compliant

Not Contained

**Search Parts in this Series**

[150176 Series](#)

**Mates With**

EconoLatch Receptacle Housing [150178](#)

**Use With**

EconoLatch Male Terminal [150180](#)