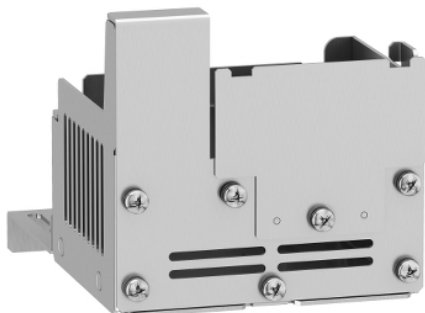


Product availability: Stock - Normally stocked in distribution facility



### Main

Range of product	Altivar
Accessory / separate part category	Mounting and fixing accessories
Accessory / separate part type	Kit for UL type 1 conformity
Product compatibility	Variable speed drive ATV320...C 1.1 kW, 200...240 V, single phase Variable speed drive ATV320...C 1.5 kW, 200...240 V, single phase Variable speed drive ATV320...C 2.2 kW, 200...240 V, single phase Variable speed drive ATV320...C 0.37 kW, 380...500 V, three phase Variable speed drive ATV320...C 0.55 kW, 380...500 V, three phase Variable speed drive ATV320...C 0.75 kW, 380...500 V, three phase Variable speed drive ATV320...C 1.1 kW, 380...500 V, three phase Variable speed drive ATV320...C 1.5 kW, 380...500 V, three phase Variable speed drive ATV320...C 0.75 kW, 525...600 V, three phase Variable speed drive ATV320...C 1.5 kW, 525...600 V, three phase
Accessory / separate part destination	Variable speed drive

### Complementary

Range compatibility	Altivar Machine ATV320
Kit composition	Mechanical device
Mounting location	Underside of drive

### Environment

Standards	UL Type 1
-----------	-----------

### Ordering and shipping details

Category	22154 - ATV320/ATV312/ATV32 ACCESSORIES
Discount Schedule	CP4B
GTIN	00785901092599
Package weight(Lbs)	0.91 kg (2 lb(US))
Returnability	Yes
Country of origin	ID

The information provided in this documentation contains general descriptions and/or technical characteristics of the products of the performance of the products contained herein. This documentation is not intended as a substitute for and is not to be used for determining suitability or reliability of these products for specific user applications. It is the duty of any such user or integrator to perform the appropriate and complete risk analysis, evaluation and testing of the products with respect to the relevant specific application or use thereof. Neither Schneider Electric Industries SAS nor any of its affiliates or subsidiaries shall be responsible or liable for misuse of the information contained herein.

## Offer Sustainability

California proposition 65	WARNING: This product can expose you to chemicals including: Lead and lead compounds which is known to the State of California to cause Carcinogen & Reproductive harm. For more information go to <a href="http://www.p65warnings.ca.gov">www.p65warnings.ca.gov</a>
EU RoHS Directive	Pro-active compliance (Product out of EU RoHS legal scope) <a href="#">EU RoHS Declaration</a>
Mercury free	Yes
RoHS exemption information	<a href="#">Yes</a>
China RoHS Regulation	<a href="#">China RoHS Declaration</a>